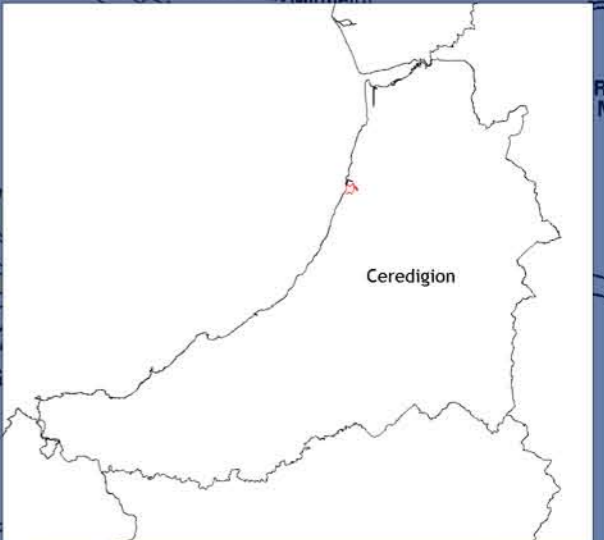
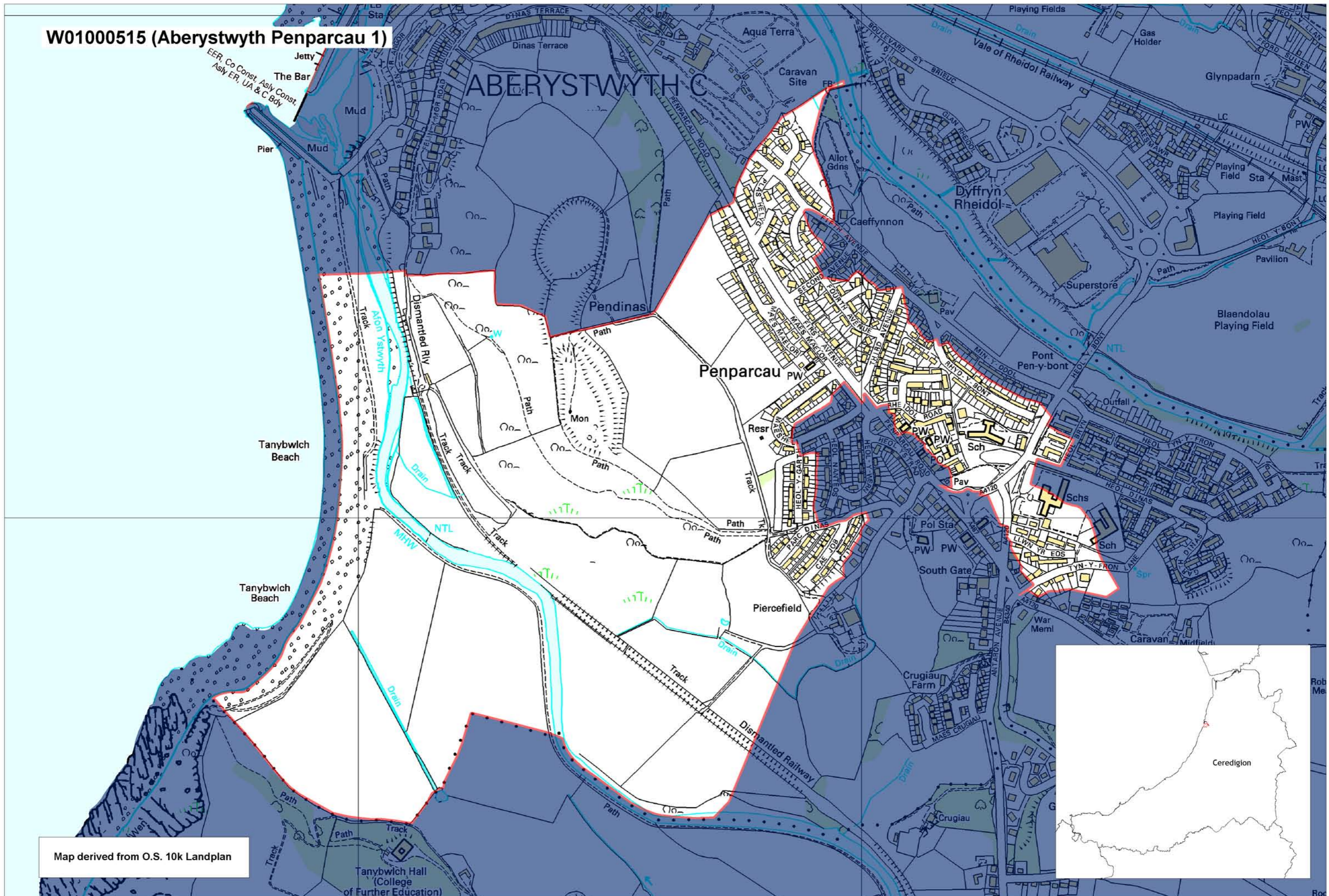


# W01000515 (Aberystwyth Penparcau 1)



Map derived from O.S. 10k Landplan

This map is based upon the Ordnance Survey material with the permission of Ordnance Survey on behalf of The Controller of Her Majesty's Stationery Office. © Crown copyright 2008. Unauthorised reproduction infringes Crown copyright and may lead to prosecution or civil proceedings. Welsh Assembly Government. Licence Number: 100017916. Mae'r map hwn yn seiliedig ar ddeunydd yr Arolwg Ordnans gyda chaniatâd Arolwg Ordnans ar ran Rheolwr Lyfrau Ei Mawrhydi. © Hawffraint y Goron 2008. Mae atgynhyrchu heb ganiatâd yn torri hawffraint y Goron a gall hyn arwain at erlyniad neu achos sifil. Llywodraeth Cynulliad Cymru. Rhif trwydded 100017916.

Produced by Cartographics, Statistical Directorate, Welsh Assembly Government. Cynhyrchwyd gan Cartograffeg, Y Gyfarwyddiaeth Ystadegol, Llywodraeth Cynulliad Cymru.