

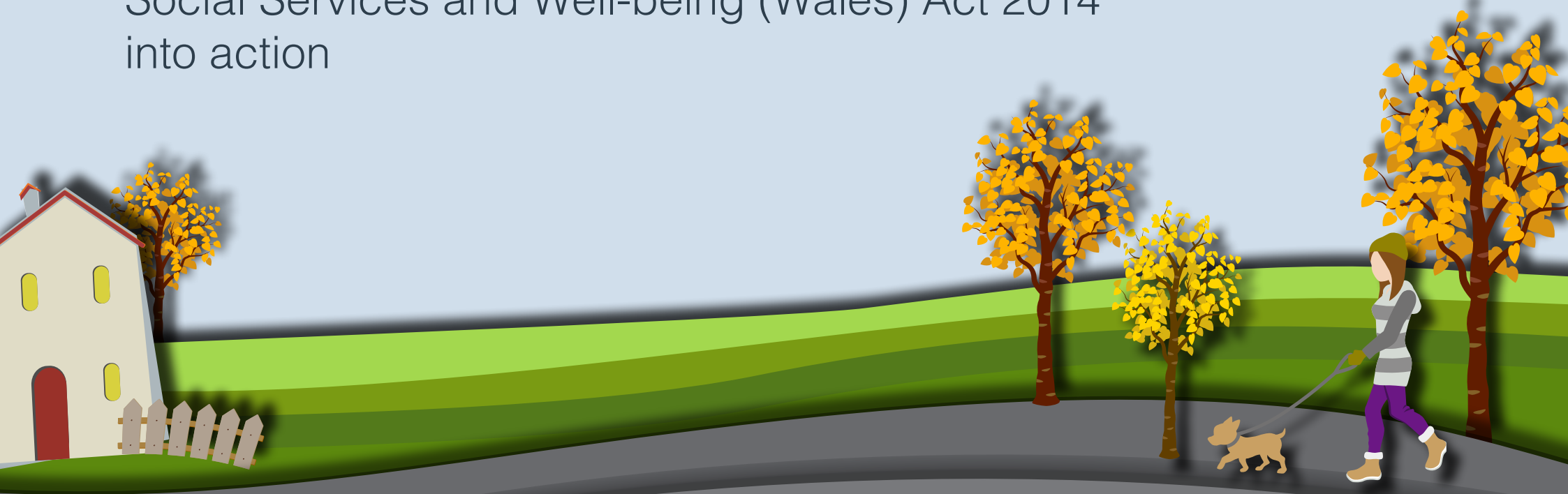


Llywodraeth Cymru
Welsh Government

www.cymru.gov.uk

Making Social Services Better

Putting **part 11** of the
Social Services and Well-being (Wales) Act 2014
into action



A consultation for young people

We've got good social services in Wales but the Welsh Government are making them even better.

Social services help families and individuals when they need help.

They also help children and young people:

- when they're in danger of being hurt;
- when they have family problems;
- when they have a disability;
- when they're in trouble with the law or police;
- when they're looked after in care; or
- when they aren't being looked after as they should be by their families.

A new way of doing things

In 2014 we made a new
Social Services and Well-being (Wales) Act.

(An Act makes changes to the law.)

This new Act sets out everything that local authorities (councils) have to do to help people in their area.

It has 11 parts that cover everything social services do and this booklet is about part 11.

To read about the whole new Act
- click here:



Getting ready

Everyone working in social services will be changing the way they work and using this new Act from April 2016.

So we're putting together the new framework (steps) now so that everyone understands what the new Act means and what they need to do.

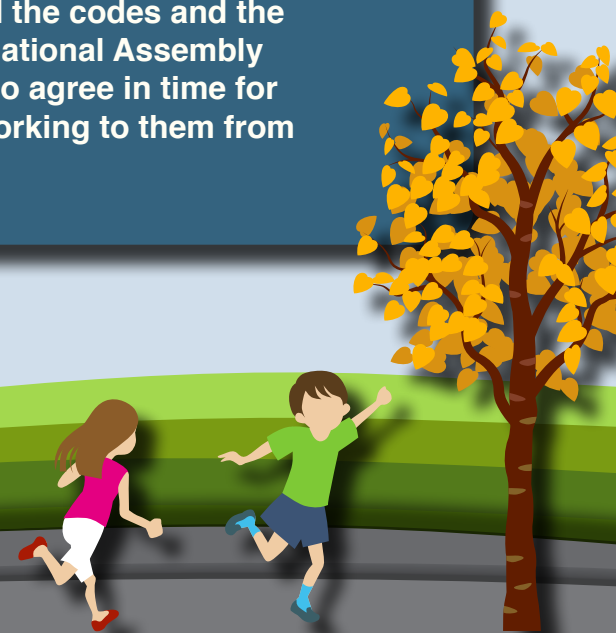
The framework will include:

- The Social Services and Well-being (Wales) Act itself
- New rules (regulations) that can be made because of the Act
- Codes of Practice (guides) for everyone who works in social services to follow.

This booklet tells you about some of the new rules and the Code of Practice that we have developed for Part 11 of the Act.

We have already asked some people working in social services about these but we want to know what you think.

After this we'll send the codes and the regulations to the National Assembly for Wales for them to agree in time for everyone to start working to them from April 2016.



What is Part 11 about?

Part 11 of the Act covers social service issues that aren't covered in the other 10 parts. These include:

- what social services can do to help people in prison, youth detention or waiting to be seen in court;
- how social services decide where someone lives; and
- what happens when people move.

There are two areas we'd like to look at in this part of the Act:

Meeting needs

— no matter what they've done.

Where people live

— arranging care and support.

Meeting needs — no matter what they've done.

Part 11 of the Act means that local authorities have to meet the needs and support of all adults and children including those in prison, youth detention or waiting to be seen in court.

The Code of Practice tells local authorities how to decide what care and support to give to:

- adults in prison in Wales;
- Welsh children in secure accommodation in England or Wales; and
- some English children who are in secure accommodation in Wales.

The new rules mean that whilst someone is in prison or secure accommodation, they:

- can't be a carer for someone else;
- can't get money given to them (direct payments) by local authorities to sort out their care;
- can't choose which accommodation they go to; and
- can't have their property protected by local authorities.



Where people live — arranging care and support.

This new Act helps local authorities decide where a person lives. Where a person lives is important because it's the local authority in that area which has to decide what support a person needs.

The Act also helps local authorities sort out any problems that happen when someone moves to another area or into a care home in another area.

Sometimes it can be difficult to work out the main place where people live and who should be supporting them. The Code of Practice sets our steps so local authorities can deal with any disagreements they have about where a person lives and who should be paying for their care and support.

Thanks for reading this.

Please fill in the questions below and send your answers to:

sswbimplementation@wales.gsi.gov.uk

or:

Sustainable Social Services Implementation Branch
Welsh Government
Cathays Park
Cardiff
CF10 3NQ

by 2 February 2015



Questions:

Do you think the new rules and the Code of Practice that we have developed for Part 11 of the Act are a good idea?

Yes

No

Don't know

Do you think we have left anything important out when making these plans?

Yes

No

Don't know

Comment:

Comment:

