

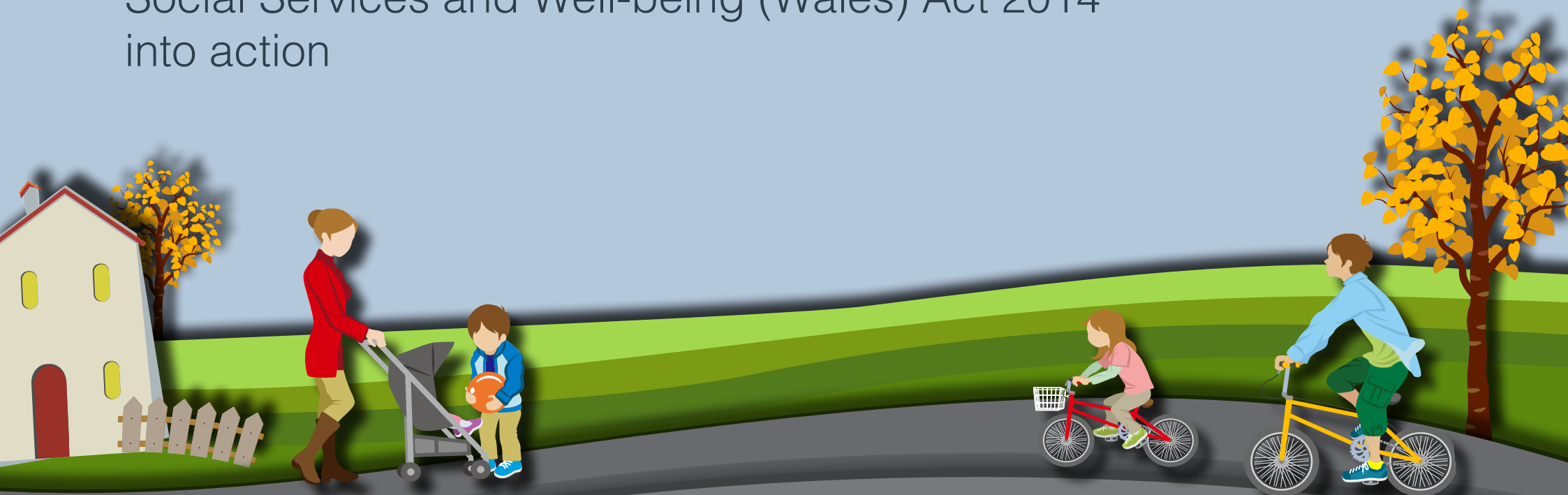


Llywodraeth Cymru
Welsh Government

www.cymru.gov.uk

Making Social Services Better

Putting **part 2** of the
Social Services and Well-being (Wales) Act 2014
into action



A consultation for young people

We've got good social services in Wales but the Welsh Government are making them even better.

Social services help families and individuals when they need help.

They also help children and young people:

- when they're in danger of being hurt;
- when they have family problems;
- when they have a disability;
- when they're in trouble with the law or police;
- when they're looked after in care; or
- when they aren't being looked after as they should be by their families.

A new way of doing things

In 2014 we made a new
Social Services and Well-being (Wales) Act.

(An Act makes changes to the law.)

This new Act sets out everything that local authorities (councils) have to do to help people in their area.

It has 11 parts that cover everything social services do and this booklet is about part 2.

To read about the whole new Act
- click here:



Getting ready

Everyone working in social services will be changing the way they work and using this new Act from April 2016.

So we're putting together the new framework (steps) now so that everyone understands what the new Act means and what they need to do.

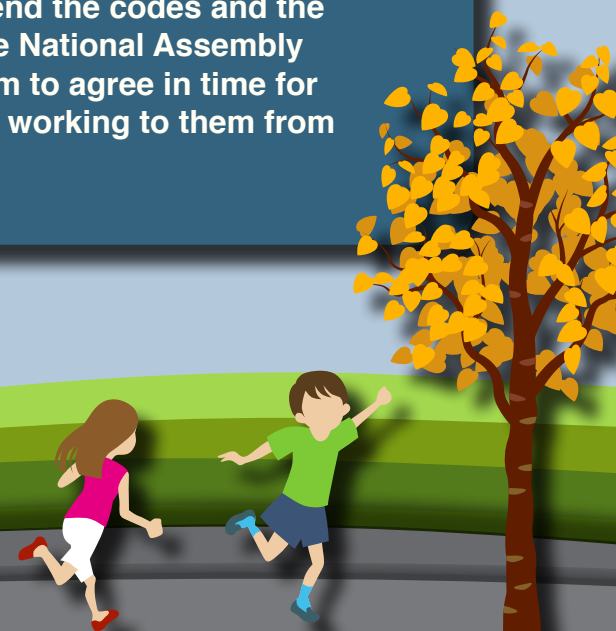
The framework will include:

- The Social Services and Well-being (Wales) Act itself
- New rules (regulations) that can be made because of the Act
- Codes of Practice (guides) for everyone who works in social services to follow.

This booklet tells you about some of the new rules and the Code of Practice that we have developed for Part 2 of the Act.

We have already asked some people working in social services about these but we want to know what you think.

After this we'll send the codes and the regulations to the National Assembly for Wales for them to agree in time for everyone to start working to them from April 2016.



What is Part 2 about?

There are four areas we'd like to look at in this part of the Act:

Well-being

- making sure people are well in every area of their lives.

Population assessments

- making sure people get the support and care they need.

Social enterprises

- making sure help and support is available in the community, benefitting people and the community.

Information

- making systems that work better.

Well-being — making sure people are well in every area of their lives.

We want everyone to get the same high quality support and care no matter where they live in Wales. So, **Welsh Ministers will write a statement of the outcomes and how to reach them in the Code of Practice.**

The Code of Practice will let local authorities (councils) know what they need to do to meet the needs of people in their area.

Welsh Ministers have to write their statements of outcomes before April 2016.



Population assessments — making sure people get the support and care they need.


Local authorities and Local Health Boards need to know about the care and support needs of people living in their areas. This includes support for carers – people who care for other people. We call this a **population assessment**.

The new rules set out:

- how to do population assessments and when to do them;
- the need to put the population assessment reports onto local authority and Local Health Board websites and to send them to Welsh Ministers; and
- the need to include carers.

The Code of Practice sets out how local authorities and Local Health Boards should work together.





Social enterprises — making sure help and support is available in the community, benefitting people and the community.

Social enterprises and co-operatives are businesses. They are not like private businesses. The people who own private businesses can keep the profit for themselves. The people who run social enterprises and co-operatives use the profit in a different way – for example to help more people get a service. This section is also about making sure people who need care and support are able to be involved in the design of their services and in the delivery of their services.

Sometimes it can be difficult for local authorities to know if a group offering services is a social enterprise, a co-operative, a business or a charity. It can also be difficult to see if they're making a real difference to communities and if they're needed.

These new rules will set out a way of working out who is who and make it easier.

The Code of Practice has steps so every local authority is doing things in the same way.



Information — making systems that work better.

All local authorities already make sure that people have information, advice and support but this is done in different ways across Wales.

The new Act means local authorities have to make sure their information and advice systems deliver the outcomes and standards that will be in the Code of Practice.

The Code of Practice will set out how the new systems should:

- tell people how they can get the help the need;
- be something everyone can use;
- have staff that are well trained and skilled;
- work with Local Health Boards;
- work with other organisations so information can be shared in the right ways;
- be somewhere people can go if they're worried about themselves or someone else;
- record personal information and assessments in safe ways; and
- record planning and how well support is being given.

Thanks for reading this.

Please fill in the questions below and send your answers to:

sswbimplementation@wales.gsi.gov.uk

or:

Sustainable Social Services Implementation Branch
Welsh Government
Cathays Park
Cardiff
CF10 3NQ

by 2 February 2015



Questions:

Do you think the new rules and the Code of Practice that we have developed for Part 2 of the Act are a good idea?

Yes

No

Don't know

Do you think we have left anything important out when making these plans?

Yes

No

Don't know

Comment:

Comment:

