

Number: WG33967



Llywodraeth Cymru
Welsh Government

Welsh Government
Consultation Document

National Development Framework

Issues, Options and Preferred Option

Date of issue: 30 April 2018
Action required: Responses by 23 July 2018

Mae'r ddogfen yma hefyd ar gael yn Gymraeg.
This document is also available in Welsh.

OGL © Crown Copyright

Overview

The National Development Framework (NDF) will be a 20 year national spatial plan for Wales. This document sets out the high level issues for the next 20 years and how the NDF might address them.

We are seeking views on the NDF Preferred Option, Vision, Objectives and Issues.

How to respond

Please respond to this consultation by answering the questions set out within this document and in the response form. Responses can be submitted in a number of ways:

Online: <https://beta.gov.wales/national-development-framework-issues-options-and-preferred-option>

Email: ndf@gov.wales

Post: NDF Team
Planning Policy Branch
Welsh Government
Cathays Park
Cardiff
CF10 3NQ

When responding please state whether you are responding as an individual or are representing the views of an organisation.

Further information and related documents

Large print, Braille and alternative language versions of this document are available on request.

The Consultation document is accompanied by Appendices

Further general details on the National Development Framework can be found on our website:

<http://gov.wales/topics/planning/national-development-framework-for-wales/?lang=en>

Contact details

For further information you can:

Email: ndf@gov.wales

Telephone: 03000 025 3261 / 0300 025 3744

Or write to: NDF Team
Planning Policy Branch
Welsh Government
Cathays Park
Cardiff
CF10 3NQ:

Data protection

The Welsh Government will be data controller for any personal data you provide as part of your response to the consultation. Welsh Ministers have statutory powers they will rely on to process this personal data which will enable them to make informed decisions about how they exercise their public functions. Any response you send us will be seen in full by Welsh Government staff dealing with the issues which this consultation is about or planning future consultations.

In order to show that the consultation was carried out properly, the Welsh Government intends to publish a summary of the responses to this document. We may also publish responses in full. Normally, the name and address (or part of the address) of the person or organisation who sent the response are published with the response. If you do not want your name or address published, please tell us this in writing when you send your response. We will then redact them before publishing.

Names or addresses we redact might still get published later, though we do not think this would happen very often. The Freedom of Information Act 2000 and the Environmental Information Regulations 2004 allow the public to ask to see information held by many public bodies, including the Welsh Government. This includes information which has not been published. However, the law also allows us to withhold information in some circumstances. If anyone asks to see information we have withheld, we will have to decide whether to release it or not. If someone has asked for their name and address not to be published, that is an important fact we would take into account. However, there might sometimes be important reasons why we would have to reveal someone's name and address, even though they have asked for them not to be published. We would get in touch with the person and ask their views before we finally decided to reveal the information.

Your data will be kept for no more than three years
Under the data protection legislation, you have the right:

- to access the personal data the Welsh Government holds on you;
- to require us to rectify inaccuracies in that data
- to (in certain circumstances) object to or restrict processing
- for (in certain circumstances) your data to be 'erased'
- to lodge a complaint with the Information Commissioner's Office (ICO) who is our independent regulator for data protection

The contact details for the Information Commissioner's Office are:

Wycliffe House
Water Lane
Wilmslow
Cheshire
SK9 5AF

Telephone: 01625 545 745 or 0303 123 1113
Website: www.ico.gov.uk

For further details about the information the Welsh Government holds and its use, or if you want to exercise your rights under the GDPR, please see contact details below:

Data Protection Officer:
Welsh Government
Cathays Park
CARDIFF
CF10 3NQ

Email: Data.ProtectionOfficer@gov.wales

Foreword

Cabinet Secretary for Energy, Planning and Rural Affairs

I am pleased to launch this consultation on the Issues, Options and Preferred Option for the National Development Framework (NDF). It focusses on the challenges and opportunities for Wales for the next 20 years and how the NDF can help address them. The Issues and Options are based on extensive engagement and discussion with stakeholders across Wales and I am committed to maintaining this involvement as we move forward. This consultation supports a key stage in the development of the NDF and will set the direction for the work ahead.

The NDF must help deliver sustainable development and prosperity across Wales. We have led the way globally with the adoption of sustainable development as a guiding principle, enshrined in law through the ground-breaking Well-being of Future Generations Act.

There is greater recognition now more than ever of the importance of joined-up and strategic thinking, to enable us to maximise the value of investments and to deliver multiple benefits to the economy, people and environment of Wales. Last year the Welsh Government launched *Prosperity for All*, a new national strategy, which recognises the value of this approach. It also identifies the role of the NDF and sets us the challenge of co-ordinating and guiding strategic development in Wales.

It is the role of the NDF to bring together the breadth of Welsh Government policies and help deliver them through the planning system. By planning our infrastructure and development together, we can ensure they complement rather than compete against each other, and deliver truly sustainable development. It will also have the role of setting the tone and direction for other plans including Strategic Development Plans and Local Development Plans.

We are preparing the NDF at a time where many of the structures and institutions which have shaped Wales for generations, are facing change. I believe by working together we have an opportunity to build on what we do well and shape the planning system to ensure Wales is developed sustainably for the benefit of us all and our future generations. There are many positives to build on and through the NDF, complemented by a repurposed Planning Policy Wales, we are determined to use the planning system to change and shape places for the better.

I am grateful to everyone who has participated in getting the NDF to this stage. I hope you will respond to this consultation, and continue to engage, contribute and share your ideas and help us deliver the first National Development Framework.

Lesley Griffiths

Cabinet Secretary for Energy, Planning and Rural Affairs

Contents

	Introduction	7
1	Developing the NDF: An Integrated Approach	9
2	NDF Vision	12
3	NDF Objectives	13
4	NDF Options	15
5	NDF Preferred Option	17
6	Changes to the Statement of Public Participation	25

Appendices

A	Issues
B	Options
C	Revised Statement of Public Participation

Introduction

Our National Strategy

Prosperity for All: the national strategy sets the foundation for long-term action and is the basis for what we will do as a Government. It requires us to work differently, to join up our approach to delivering Government priorities and avoid a proliferation of strategies and action plans. The purpose of the NDF is to support the delivery of Prosperity for All by developing a clear long term spatial direction for Government policy, action and investment and for others who the Government work with.

The NDF will achieve this by identifying key growth areas, the type and location of the infrastructure we need, by co-ordinating the delivery of housing, employment and connectivity infrastructure, and by directing key partners to help deliver the national spatial vision. Future policy development, investment decisions and the work of our key partners will be directed by the NDF, allowing co-ordination and early focus on delivery rather than establishing separate spatial priorities.

Why is this stage important?

During stage 4 of the NDF process, we engaged across Wales, gathered evidence and potential NDF projects and spoke to many people about what the NDF should do. From this work and following a process of testing and assessment, which is explained in this document, we have developed a vision, objectives and preferred option for the NDF. These will provide the basis for developing the NDF.

This consultation is an important opportunity for all stakeholders – local authorities, businesses, community groups, members of the public, professional bodies and others – to provide their views on the proposed approach to the NDF and help shape it.

What will happen next?

We will consider the responses to this consultation and issue a Consultation Report. Later this year we will begin preparing the draft NDF, informed by the comments we receive. We intend to consult on a draft NDF in summer 2019 and publish the NDF in September 2020.

NDF Preparation Timetable

Stage 1 - completed	Prepare Statement of Public Participation	Jan 2016
Stage 2 - completed	Publish and consult on the Statement of Public Participation (12 weeks)	Feb – April 2016
Stage 3 - completed	Consider responses to the Statement of Public Participation consultation and prepare a consultation report	May – Sept 2016
Stage 4 – completed	Gather evidence, develop the vision, objectives and options / Undertake engagement / Call for Evidence & Projects	Oct 2016 – March 2018
Stage 5	Publish and consult on main issues, options and preferred option, supported by environmental reports and assessments (12 weeks)	April – July 2018
Stage 6	Consider responses to the main issues, options and preferred option consultation and prepare a consultation report	July – Oct 2018
Stage 7	Prepare draft NDF / Undertake engagement	Oct 2018 – June 2019
Stage 8	Consult on draft NDF (12 weeks)	July – Sept 2019
Stage 9	Consider responses to the draft NDF and prepare a consultation report	Oct 2019 – March 2020
Stage 10	Assembly consideration of the draft NDF (60 'sitting' days)	April – June 2020
Stage 11	Publish NDF	Sept 2020

1 Developing the NDF: An Integrated Approach

Issues, Options and Preferred Option

This document is the product of the evidence gathering, engagement and consultation undertaken to date. This work has identified the key issues the NDF should respond to and plan for; it has supported the development of a vision and objectives for the NDF; and through the Integrated Sustainability Appraisal (ISA), allowed us to develop the preferred option.

Issues (Appendix A)

Appendix A provides an overview of the key issues for the NDF in relation to Culture; Climate Change, Decarbonisation and Energy; Digital Connectivity, Economy; Housing; Natural Resources; Transport; Welsh language; and Health. These issues have been informed by a broad range of sources which include key Welsh Government strategies, evidence submitted to the Welsh Government, consultation on the [ISA Scoping Report](#) and stakeholder engagement. They have informed the NDF vision, objectives, alternative options and the preferred option.

Vision (Section 2)

The vision sets out the Wales we wish to see in 2040. It provides direction for the development of the NDF by focusing on what we want Wales to be like. Achieving this future for Wales will require us to positively respond to the challenges we face, maximising our opportunities and shaping our decisions to support the well-being of future generations. The vision provides the basis for developing the NDF objectives.

Objectives (Section 3)

The objectives set out what the NDF is required to do if we are to deliver the vision for Wales in 2040. They outline the areas where the NDF should focus and set the strategic direction for the development of the preferred option and the NDF itself. Future monitoring of the NDF will be undertaken against the objectives, which will assess how far we have been able to meet them.

Options (Section 4 & Appendix B)

In considering how the NDF can deliver its objectives, we have considered 4 alternative options. These options considered alternative approaches for the NDF focusing on:-

- the strongest market areas;
- communities across all of Wales;
- decarbonisation; and
- natural resources

We engaged with people across Wales during October-November 2017 to develop and seek their views on the options, before they were tested using the ISA. This engagement and testing directly contributed to developing the preferred option.

Section 4 provides a summary of each option, with full details provided in Appendix B. The ISA Interim Report sets out in full the development and testing of the alternative options.

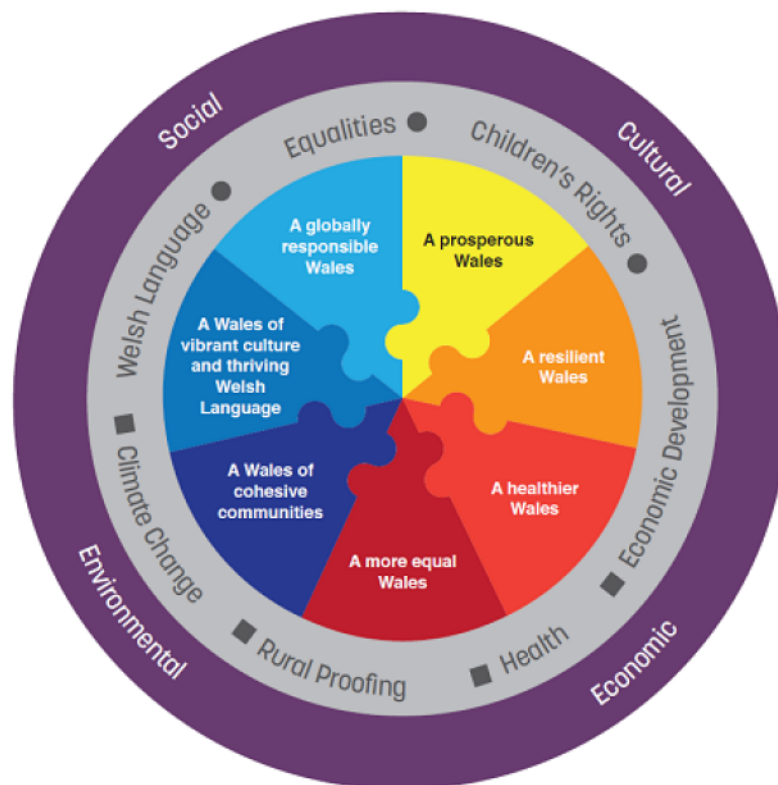
Preferred Option (Section 5)

The preferred option provides the framework for the development of the NDF, identifying the spatial issues the NDF will include and strategic direction for NDF policies. It comprises three overarching strategic policies and four thematic areas which have also been tested using the ISA and Habitats Regulation Assessment (HRA). This testing is set out in the ISA Interim Report and HRA Screening Report. Following consultation the preferred option will be finalised, and it will shape all future work on the NDF. It is important you take this opportunity to review it and tell us what you think, as this is the start of the formal process of drafting the NDF.

Integrated Sustainability Appraisal

In developing the NDF, the Welsh Government is undertaking a range of assessments, to ensure the potential impacts of emerging policies are fully considered. We decided to integrate these different assessments into a single assessment called the Integrated Sustainability Appraisal. Some of these impact assessments are required by law and others the Welsh Government has determined it will undertake. The diagram below identifies these.

Integrated Impact Assessments



Key:
■ Government
● Statutory
■ Well-being Goals
■ Integrated Impact Assessments
■ Sustainable Development Components

The ISA includes a Sustainability Appraisal and Strategic Environmental Assessment. These assessments are key tools in achieving sustainability and positive environmental outcomes.

This integrated approach enables us to fully understand the implications of the NDF on the range of assessment areas and, importantly, identify opportunities to maximise positive outcomes. It also supports a collaborative approach to considering issues that the NDF will address, sharing knowledge and recognising links between policy areas in a consistent and transparent manner.

The Well-being goals and ways of working have been integral to the development of the ISA, the preferred option and in time, they will inform the NDF itself. In developing the ISA, we have embedded the ways of working into the assessment process to ensure they shape every stage of the NDF's preparation. Further information on the ISA is available [here](#).

Alongside the ISA, we have also undertaken an initial assessment of the potential impact of the preferred option on international and European designated sites. This work is called Habitats Regulations Assessment and further information is available [here](#).

Questions

- 1a Do you have any comments on the findings of the Integrated Sustainability Appraisal Interim Report?
- 1b Do you have any comments on the Habitats Regulations Assessment Preliminary Screening Report?

2 NDF Vision

NDF 2020 to 2040: Sustainable Places

Sustainable Places are the goal of the land use planning system. The NDF will help deliver sustainable places across Wales by 2040, by supporting positive placemaking and ensuring that our spatial choices direct development to the right places, make the best use of resources, create and sustain accessible, healthy communities, protect our environment and support prosperity for all.

By 2040, we will help meet the well-being goals for current and future generations by ensuring Wales is a nation of:

- distinctive and natural places, where spatial choices have ensured that our natural resources are sustainably managed, that we are resilient to environmental risks including flooding and poor air quality and our natural, historic and that cultural assets are protected, promoted and enhanced;
- productive and enterprising places, where spatial choices have supported the transition to a low carbon, prosperous society through the delivery of energy, transport and digital infrastructure, supported key growth sectors and strengthened the spatial relationship with neighbouring countries;
- active and social places, where spatial choices have supported the delivery of housing to meet society's needs, in connected, accessible communities; and
- prosperous, distinctive and diversified regions.

Questions

2a Do you agree the NDF Vision is clear, ambitious and realistic?

2b Do you believe any changes to the NDF Vision are required? If so, what are they?

3 NDF Objectives

1. Climate change, decarbonisation and energy

- 1.1 To enable the transition to a low-carbon economy.
- 1.2 To enable management of and adaption to the consequences of climate change.
- 1.3 To support decarbonisation in Wales and help deliver the Welsh Government's greenhouse gas emissions and renewable energy targets.

2. Economic prosperity and regeneration

- 2.1 To provide strategic direction for the delivery of infrastructure that supports economic prosperity for all and green growth.
- 2.2 To support the national and foundation sectors; and growth and innovation in a low carbon economy.
- 2.3 To support strong, regional economies.
- 2.4 To tackle inequality and provide strategic direction for regeneration initiatives.

3. City Regions & Growth Deals

- 3.1 To support the effective delivery of city region deals and growth deals across Wales.

4. Rural Wales

- 4.1 To enable the delivery of jobs, services and infrastructure to strengthen rural communities and retain young people.
- 4.2 To support resilience and diversification in the rural economy.

5. Housing

- 5.1 To provide strategic direction for affordable and market housing linked to connectivity infrastructure, key facilities and areas of growth.

6. Natural Resources, Circular Economy & Flooding

- 6.1 To strengthen the resilience of biodiversity assets, including habitats, species, and designated sites.
- 6.2 To support the sustainable management of our natural resources and facilitate nature recovery.
- 6.3 To protect, promote and enhance nationally important landscapes.
- 6.4 To provide strategic direction to manage and adapt to the potential threat of flooding.
- 6.5 To ensure resource efficiency, minimise the unsustainable use of resources and support the development of the circular economy.
- 6.6 To support the reduction of pollution and improve air, noise and water quality.
- 6.7 To support the delivery of the objectives of the Welsh National Marine Plan.

7. Culture & Heritage

- 7.1 To protect, promote and enhance national cultural and historic assets.
- 7.2 To support opportunities for new national cultural development.

8. Transport

- 8.1 To support a reduction in travel by private vehicles and a growth in walking, cycling and public transport.

8.2 To facilitate the delivery and improvement of key transport infrastructure to decarbonise travel.

9. Welsh Language

9.1 To support the socioeconomic infrastructure of communities and help to create the conditions to realise the Welsh Government's Welsh language objectives, including 1 million Welsh speakers by 2050.

10. Health & Well-being

10.1 To support healthy and active lifestyles and improve access to services.

10.2 To support the reduction of health inequalities across Wales.

11. Digital infrastructure

11.1 To support the delivery of digital infrastructure and help achieve the Welsh Government's objective of 100% coverage of broadband and telecoms services across Wales.

12. Cohesive Communities

12.1 To support the delivery of cohesive communities.

Questions

3a Do you agree with the NDF Objectives?

3b Do you consider any additional objectives are required? If so, what are they?

3c Do you consider any of the NDF Objectives should be amended or removed?

3d Do you have any comments on the assessment of the NDF Objectives as set out in the Integrated Sustainability Appraisal interim report?

4 NDF Options

Alternative Option 1 –focusing growth in the strongest market areas

This option is focused on the long term growth and development of Wales around the strongest market areas. It is based on supporting economic growth in areas where markets are strongest and which have the best potential to grow. This option recognises that many objectives – deprivation, regeneration, physical and mental health, language, resilience of natural resources - are directly linked to economic prosperity. The role of the NDF under this option is to direct growth to the strongest areas and provide the infrastructure required to support it. It takes a top-down approach to the delivery of major infrastructure and makes clear choices on which parts of Wales will grow and how they should grow. The planning system is responsive to opportunities for supporting economic growth and does not constrain investment in identified growth areas.

Alternative Option 2 – focusing on creating strong communities across all Wales

This option is focused on the whole of Wales and seeks to address the issues we face through a dispersed approach, which does not seek to prioritise one area over another. Long term objectives are met through actions and investment across the whole of Wales and by directing support to local communities to develop bottom-up solutions to national issues. This option delivers strong local communities, providing access to jobs, housing, services and facilities that they need and with a focus on people, their well-being and sustainability. The role of the NDF is to distribute growth and infrastructure across the whole of Wales with a focus in particular on supporting areas of greatest need and where markets are weaker. It retains a clear focus on the delivery of national objectives and co-ordinates the actions at the regional and local level to meet these aims.

Alternative Option 3 –to deliver decarbonisation and climate change objectives.

This option is focused on decarbonisation and climate change and making our response to these issues the primary consideration for the NDF. The planning system has a pivotal role in facilitating the transition to a low carbon society by ensuring decarbonisation is at the forefront of land use choices. Targets for renewable energy and greenhouse gas emissions and emerging carbon budgets significantly shape the NDF. This option focuses particularly on land use, the relationship between different uses and the connectivity between them. It places a strong emphasis on planning how our settlements will grow, interconnect and understanding the consequences that will arise from the choices we make and the opportunities arising from doing things differently.

Alternative Option 4 –focused on the sustainable management of Wales’s natural resources

This option is focused on the sustainable management of our natural resources. It recognises that unsustainable management will negatively impact upon future generations. This option provides a positive framework to help realise the social, economic, environmental and cultural value of our natural resources and ensure key ecological networks and habitats are adaptable and resilient to change. Through increasing resource efficiency and reducing pollution, the NDF helps to build greater resilience into our ecosystems and biodiversity. It emphasises agriculture, forestry, renewable energy, water and tourism to provide the opportunity to develop high quality jobs across the whole of Wales and secure long term economic sustainability.

Benchmark Option - Do Not Prepare the NDF

This alternative option considered not preparing a NDF. The existing Wales Spatial Plan (WSP) would remain the national spatial plan and would not have development plan status. The Planning (Wales) Act requires the preparation of a NDF. This option is therefore not realistic. It did however provide the opportunity to consider what would happen if a NDF were not prepared and how national strategic planning decisions would be taken. It provided an important benchmark against which to understand other potential options.

In testing these options, it was seen that each option had positive elements and no single option would alone deliver the NDF objectives. A hybrid option was developed, drawing together the key strengths from each option. This was tested and is the basis for the preferred option.

Full details of each option is provided in Appendix B

Questions

- 4a. Do you agree the NDF Options have been considered appropriately, in order to identify key strengths and weaknesses, and inform the NDF Preferred Option?
- 4b. Do you have any comments on the assessment of the NDF Options as set out in the Integrated Sustainability Appraisal interim report and preliminary Habitats Regulations Assessment screening report?
- 4c. Are there further alternatives/options that should be considered for the strategic direction of the NDF?

5 NDF Preferred Option: Sustainable Places

The Preferred Option

The NDF preferred option outlines the spatial framework for the development of the NDF. It sets out the spatial issues that will be covered and is the basis for developing the NDF from summer 2018 onwards. The following table summarises the preferred option, setting out the three overarching placemaking objectives which all decisions should support and, under four thematic areas, the further issues the NDF will include and provide spatial direction for. The placemaking objectives and thematic areas reflect the proposed structure of Planning Policy Wales (PPW).

Sustainable Places

Sustainable Places are the goal of the land use planning system in Wales. The National Development Framework has a key role to play in making sustainable places. It provides a framework for the delivery of our spatial objectives and co-ordinates actions nationally, regionally and locally to achieve our vision for Wales in 2040.

The Preferred Option sets out the framework for preparing the NDF. It identifies the spatial issues that will be covered and the strategic direction for the policies the NDF will contain. The Preferred Option is presented under 5 areas:-

1. **Placemaking;**
2. **Distinctive & Natural Places;**
3. **Productive & Enterprising Places;**
4. **Active & Social Places; and**
5. **Wales's Regions.**

The Preferred Option, and in time the emerging NDF, should be read alongside PPW. PPW sets the Welsh Government's national planning policies, providing the full context for the themes and the direction for the NDF's preparation. The NDF will set out the spatial elements of national planning policy and will not repeat PPW. Working together PPW and the NDF will help us achieve sustainable places.

1. Placemaking

To support the delivery of sustainable places, the NDF will embed placemaking into the heart of the development planning system. The NDF will focus on three spatial aspects of the Placemaking theme – decarbonisation and climate change; health and well-being; and cohesive communities and the Welsh language.

In accordance with the approach set out in PPW, the placemaking theme represents the first principle through which all spatial choices are first considered. Decisions taken to support other themes, must first demonstrate that they are compatible with the placemaking theme.

Spatial policies and choices made in the NDF will support decarbonisation, climate change resilience, health and well-being, cohesive communities and the Welsh language objectives. The delivery of these objectives will inform all future decisions made under the NDF.

P1 Decarbonisation & Climate Change

The NDF will ensure that the planning system in Wales plays a key role in facilitating clean growth and decarbonisation and helps build resilience to the impacts of climate change. The transition to a low carbon society will bring opportunities around clean growth and quality jobs and deliver wider benefits, including better places to live and work, clean air and water and improved health outcomes. Achieving the Welsh Government's strategic decarbonisation goals, which include a reduction in our greenhouse emissions by at least 80% by 2050 are a key driver which all development plans must support.

P2 Health & Well-being

The NDF will provide a strong policy framework requiring that physical and mental health and well-being outcomes, for both current and future generations, are central to spatial decision making. The NDF will recognise that disadvantaged and deprived communities can be disproportionately impacted by health problems and its regional focus will allow for regional inequalities to be tackled.

The NDF and other development plans, must co-ordinate delivery of infrastructure to ensure essential services, including health and education, are connected and accessible. The NDF will make a positive contribution to the overall determinants of health. For example, resilience measures for climate change and transport policies will improve air and water quality and provide walking, cycling and green infrastructure to support healthier lifestyles. The reduction of fuel poverty, through the support for decentralised, localised energy generation and the delivery of high quality housing, will have a positive impact on people's health and well-being.

P3 Cohesive Communities & Welsh Language

The NDF will ensure that the planning system in Wales plays a key role in delivering cohesive communities. Strong and inclusive land use planning is essential to ensuring existing and future communities are well planned and equitable for all. The planning system must play its role in ensuring that no one is disadvantaged on the basis of who they are or where they live and must support actions to address existing problems.

Development plans at all levels must ensure that health and economic inequalities are addressed; that all members of society have access to services and facilities, including health, education and digital infrastructure; that the planning system facilitates the delivery of land for high quality housing that meets all society's needs, in locations that are sustainable, accessible and connected; and that communities are resilient to environmental threats such as flooding, pollution and poor air quality.

The NDF will ensure that Welsh speaking communities are supported and create conditions that enable the language to prosper. The NDF will support communities by enabling appropriate employment opportunities and planning the provision of new homes so that population change is carefully managed and helps create the conditions to realise the Welsh Government's Welsh language objectives, including 1 million Welsh speakers by 2050.

Economic inclusion is an important principle and the planning system must build places that create jobs, enhance skills and employability and provide an environment for businesses to grow and thrive. It must also ensure that high quality, modern infrastructure, which is a key enabler of competitiveness and productivity, is well planned to be a catalyst for wider regeneration and supporting vibrant communities.

Themes

The following sections of the Preferred Option identify the spatial issue the NDF will consider and the high-level strategic direction for developing future NDF policies. The **spatial issues** are issues that can be understood spatially and which have a nationally important dimension. The **strategic policy direction** provides a high-level overview of the policies the NDF could contain and what they will seek to do. They are not final policies and should not be considered as such. Taken together, these demonstrate the basis for developing the NDF as the process moves forward.

2 Distinctive & Natural Places

To support the delivery of Distinctive & Natural Places, the NDF Spatial Strategy focuses on our natural resources and our unique culture and heritage. The following strategic policy and spatial direction will shape the NDF.

	Spatial Issue	Strategic Policy Direction
DN1	Identify national natural resources.	NDF policies will maintain and enhance natural resources, improve resource efficiency and minimise the unsustainable use of natural resources.
DN2	Identify areas of current and future potential environmental risk.	NDF policies will require that new development avoids areas of environmental risk and builds resilience to the risks from flooding, air quality, water quality, increases in temperatures, loss of habitats and ecosystems.
DN3	Nationally important landscapes, seascapes, nature conservation sites and habitats will be identified. Opportunities for growth, expansion, greater connectivity and enhancement will be identified.	NDF policies will require the protection and enhancement of nationally important landscapes, seascapes, nature conservation sites and habitats.
DN4	Nationally important ecosystems will be identified.	NDF policies will require strengthening of nationally important ecosystem resilience through greater diversity,

		connectivity, scale, condition and adaptability.
DN5	Nationally important green infrastructure and opportunities for new infrastructure will be identified.	NDF policies will require the protection and enhancement and facilitate the delivery of new green infrastructure.
DN6	Nationally important historic and cultural assets will be identified. Opportunities for new national cultural development will be identified.	NDF policies will require the protection, promotion and enhancement of historic and cultural assets and facilitate the delivery of new national cultural development.

3 Productive & Enterprising Places

To support the delivery of Productive & Enterprising Places, the NDF Spatial Strategy focuses on key sectors and the delivery of modern, resilient, low-carbon transport, energy and digital infrastructure. The following strategic policy and spatial direction will shape the NDF.

	<i>Spatial Issue</i>	<i>Strategic Policy Direction</i>
PE1	Nationally important energy generation, storage and distribution infrastructure will be identified. Locations for new national scale renewable and low-carbon energy generation, storage and distribution infrastructure will be identified.	NDF policies will support the delivery of the Welsh Government's renewable energy targets including 70 per cent of electricity consumed in Wales from Welsh renewable sources by 2030 and locally owned renewable energy capacity in Wales, reaching 1 GW by 2030. Policies will support generation through a range of renewable and low-carbon technologies, storage and distribution infrastructure.
PE2	All Wales.	NDF policies will provide a framework for the delivery of decentralised, local energy generation and distribution including community owned renewable energy schemes across the whole of Wales.
PE3	All Wales	NDF Policies will provide a framework for the delivery of modern digital infrastructure across the whole of Wales and will require technological capacity to be built into the design of new development, infrastructure (including transport infrastructure) and areas of

		growth and regeneration.
PE4	Nationally important employment, mineral and waste areas will be identified. Locations for new nationally significant growth, including projects, linked to connectivity infrastructure and growth areas, will be identified.	NDF policies will provide a framework to support growth in sectors helping deliver decarbonisation objectives, the transition to a low-carbon economy; and the circular economy.
PE5	Existing and new locations for nationally important economic growth sectors.	NDF policies will provide a framework to support growth in key national sectors. This framework will include facilitating the infrastructure required to support their growth.
PE6	All Wales.	NDF policies will provide a framework to support growth including in the foundational sectors, which include the care, tourism, food and retail sectors across the whole of Wales.
PE7	Wales – England Border.	NDF policies will promote cross border spatial economic development, land use and transport planning, to maximise the positive, long term outcomes for both Welsh and adjoining regions.
PE8	Nationally important roads, railways, ports and airports will be identified. Proposals for new infrastructure investment including rail electrification, public transport hubs and metro schemes will be identified.	NDF policies will provide a framework for investment in existing and new national transport infrastructure to decarbonise the transport sector, improve connectivity, efficiency and improve air quality.
PE9	Nationally targeted regeneration areas will be identified.	NDF policies will require regeneration activities support health and well-being benefits and focus on building places that create jobs, enhance skills and employability and provide an environment for businesses to grow and thrive.
PE10	National Marine Plan designations and national projects with a marine-terrestrial relationship will be identified.	NDF policies will provide a framework to ensure the delivery of national projects and policies covering the marine-terrestrial planning regimes.

4 Active & Social Places

To support the delivery of Active & Social Places, the NDF Spatial Strategy focuses on an integrated approach to the delivery of strategic housing and active travel infrastructure. The following strategic policy and spatial direction will shape the NDF.

	<i>Spatial Issue</i>	<i>Strategic Policy Direction</i>
AS1	All Wales	NDF policies will require that strategic housing development is linked to connectivity infrastructure, key facilities (including health and education) and areas of growth; and supports the aim of providing better jobs and facilities closer to home.
AS2	All Wales	NDF policies will require that strategic housing development meets the needs of everyone and that the types of housing required are considered alongside locational and numerical considerations.
AS3	All Wales.	NDF policies will identify a national policy based population and housing projection, which will include an all Wales range of housing numbers for the plan period.
AS4	National active travel (including walking and cycling) infrastructure will be identified. Improvements to existing and opportunities for new national active travel (including walking and cycling) infrastructure will be identified.	NDF policies will provide a framework for improvements to existing and new national active travel (including walking and cycling) infrastructure.

5 Wales's Regions

The NDF Spatial Strategy provides direction for the three regions across Wales – North Wales, Mid & South West Wales and South East Wales. To support the delivery of strong, resilient and distinctive regions, the NDF Spatial Strategy focuses on strategic housing, co-ordinated infrastructure delivery in city and growth deal areas and support for rural areas. The following strategic policy and spatial direction will shape the NDF.

<i>Spatial issue</i>	<i>Strategic Policy Direction</i>
R1 Three regions – North Wales, Mid & South West Wales and South East Wales will be identified.	NDF policies will provide a framework for regional planning including the preparation of SDPs. The framework will support growth based on the regions distinctive strengths, to create more diverse, resilient economies, connected communities and address regional inequalities.
R2 Three regions – North Wales, Mid & South West Wales and South East Wales will be identified.	NDF policies will identify regional policy based population and housing projections for each region, which will include a regional range of housing numbers for the plan period.
R3 City region and growth deal areas will be identified.	NDF policies will provide a framework for connected, accessible and well planned city region and growth deal areas through the co-ordinated delivery of national and regional transport, energy and digital infrastructure, housing and key services and facilities.
R4 Rural areas within the three regions will be broadly identified.	NDF policies will provide a framework for rural housing, services and facilities (including health and education) employment and connectivity (digital and transport) infrastructure to ensure Wales’s rural communities retain and attract people.
R5 Rural areas within the three regions will be broadly identified.	NDF policies will provide a framework for responding to the challenges and opportunities arising from exiting the EU over the plan period. Supporting agriculture and businesses and providing a clear framework for diversification and co-ordination with key Government strategies will be key policy objectives.

Questions

5a. Do you agree with the NDF Preferred Option?

5b. Do you have any comments on the assessment of the NDF Preferred Option as set out in the Integrated Sustainability Appraisal interim report and preliminary Habitats Regulations Assessment screening report?

- 5c. Do you believe all the NDF Objectives are adequately addressed in the NDF Preferred Option?
- 5d. Do you believe the NDF Preferred Option complements the NDF Vision and has the potential to help deliver it?
- 5e. Do you agree it is important for the NDF and Planning Policy Wales (PPW) to adopt similar and complementary structures, to help make clear links between the two documents?
- 5f. The NDF Preferred Option is developed around the structure of PPW: Placemaking; Distinctive & Natural Places; Productive & Enterprising Places; Active & Social Places; and includes an additional theme on Wales' Regions. Do you agree with this approach?
- 5g. Do you agree with the Spatial Issues and Strategic Policy Direction outlined within the NDF Preferred Option?
- 5h. Do you agree the NDF Preferred Option offers a basis for the co-ordinated delivery of Welsh Government priorities outlined in its national strategy?
- 5i. Do you believe the Preferred Option could be formulated or changed so as to have increased positive effects on opportunities for people to use the Welsh language and on treating the Welsh language no less favourably than the English language?

6 Changes to the Statement of Public Participation

The Statement of Public Participation (SPP) was first published in 2016. Since then we have made considerable progress in moving the NDF forward, developing the ISA, undertaking two rounds of public engagement and talking with many people across Wales. We are taking this opportunity to make some minor changes to the SPP to better reflect how the process has developed. Appendix C sets out these changes.

The timetable and stages for developing the NDF are **not** proposed to change.

Summary of Changes

Integrated Sustainability Appraisal – we have updated the references to the sustainability appraisal / strategic environmental assessment to better reflect the integrated approach we have developed for the NDF. *Changes - Abbreviations (Page 2); Contents (Page 3); and update to Section 4 (Page 9).*

Drop-in Events Across Wales – one of the strengths of the NDF process to date, has been the variety of events, meetings, forums and locations across Wales that we have attended as we have developed the NDF. We have been able to be responsive to those we have met and been able to accommodate the majority of requests made to us. The original SPP identified that drop in events would be held in named locations across Wales at the major consultation stages. While we are holding a number of drop in events at the current consultation stage, the engagement to date suggests we should be flexible in the way we engage; we are therefore proposing to amend the SPP. Informal opportunities to engage with officials will be offered across Wales, however we are not proposing to specify the location of these opportunities at this stage, to allow flexibility and enable us to respond to stakeholder demand. *Changes - Paragraph 3.5 (Page 7).*

Questions

6a Do you agree with the proposed changes to the Statement of Public Participation?

6b Are there any other changes we should make to the Statement of Public Participation?