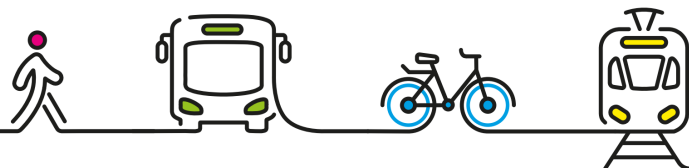


Improving Access to Severn Tunnel Junction Station

Information for Public Consultation

February - March 2022



Introduction

The **Burns Delivery Unit** has been established by Welsh Government and Transport for Wales (TfW) to deliver the recommendations of the South East Wales Transport Commission. In collaboration with Monmouthshire County Council (MCC), a recommendation is being progressed to **improve access to Severn Tunnel Junction station**, with a focus on inclusive and sustainable transport choices.

Severn Tunnel Junction station is used by approximately 230,000 passengers a year and has been identified as a suitable location to become a rail-based Park and Ride hub, allowing users to easily arrive by bus, bike, on foot or park their car to access rail services across the region.

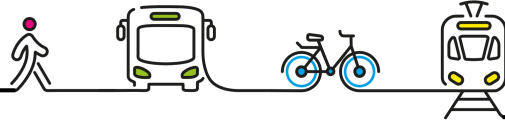
There are currently no bus services directly serving the station, and there is a lack of accessible and safe walking and cycling routes or cycle storage. Vehicle access to the station is constrained by the narrow width of and parking arrangements on Station Road. This restricts access for buses and creates an unsafe and unattractive environment for pedestrians and cyclists.

Vision & Objectives

Overarching Vision	To provide efficient, reliable and inclusive transport access to Severn Tunnel Junction station that prioritises the use of bus, walking and cycling	
Scheme Objectives	Accessibility	<p>Make Severn Tunnel Junction station more accessible for all people favouring greener modes: bus, walking and cycling</p> <p>Increase public transport journeys by providing new bus services to Severn Tunnel Junction station</p>
	Economy	Provide an accessible, sustainable and efficient transport access to Severn Tunnel Junction station to support regional connectivity and productivity
Design Objectives	Future proofing	Works not to prevent future improvements to transport in the scheme area
	Interchange	Allow users to switch easily between different modes of transport, making sustainable transport choices competitive with private cars and taxis



The Improvement Scheme



Investing in the provision of all modes of transport at Severn Tunnel Junction station will make it easier for people to travel to where they need to go for work and leisure within South East Wales and across the border to England, in an environmentally friendly way.

Several options have been developed which could be delivered as a phased programme of works, including:

- A new access road to the station from the B4245, incorporating a segregated walking and cycling route (separated from main traffic)
- M48 connection and new junction
- Diversion of existing bus services (X74 and T7) onto the new access road to the station, to provide joined-up, seamless interchange with rail services
- Better facilities at the station itself, including a new bus layby and bus turning facility, a new car park, cycle parking, and walking routes
- Potential improvements on Station Road to make access to the station by walking, cycling and bus easier, and enabling buses to take a circular route to the station via Station Road and the new station access road

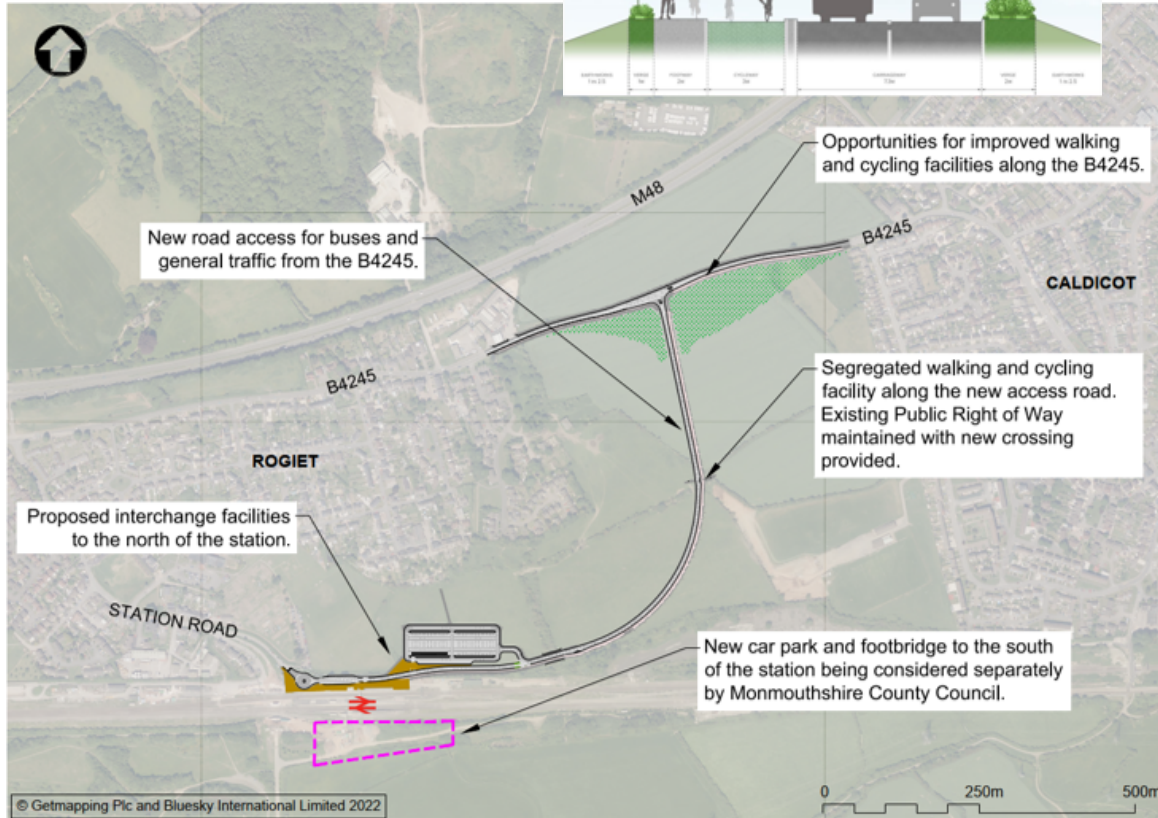
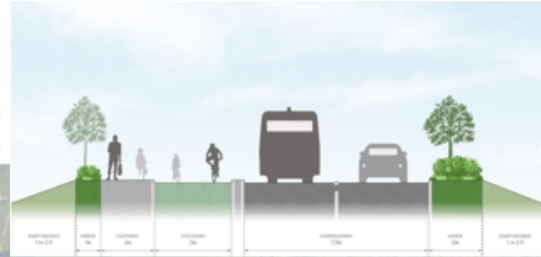
In order for you to be able to give your views on these options, the following pages outline them in more detail and provide more information on how they could be delivered. Further detail on how to get involved in the consultation is provided at the end of this document.



Option 1: B4245 Link to Severn Tunnel Junction station with enhancements to Station Road

This option would see the development of a new access route to the station from the B4245 Rogiet Road, and improvements to Station Road to provide enhanced access / egress for buses, pedestrians and cyclists.

B4245 Link to Severn Tunnel Junction station



Station Road Improvements

Further works to improve Station Road could be considered to enhance access / egress to the station for bus, walking and cycling. This could include footway improvements and a review of car parking arrangements.

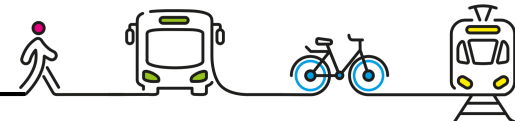


Pros:

- Allows users to switch easily between rail, bus, walking, cycling and car
- Good links with existing and proposed pedestrian and cycling networks – the designs tie into future aspirations for the local walking and cycling networks
- Improves journey times for trips to the station (particularly from the east)
- Supports use of the station for park and ride
- Station Road could be used to provide an access loop with the new link road to maximise benefit for bus access and patronage

Cons:

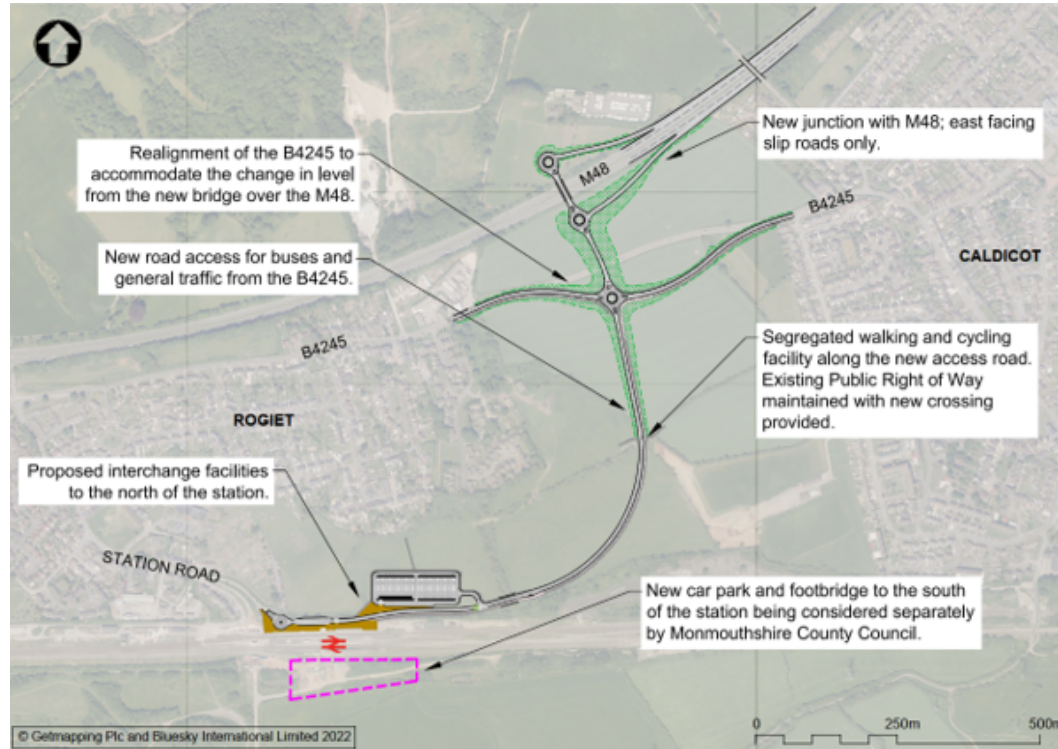
- No link to the strategic road network (motorways and A-roads)
- Challenges along Station Road such as pinch points, on-street parking and poor vehicular access to the station



Option 2: M48 connection and new junction

This option extends the new link road within Option 1 to the M48, providing a new junction and connection between Severn Tunnel Junction station and the Strategic Road Network (motorways and A-roads). Option 2a provides east facing slip roads only on the M48, whereas Option 2b caters for traffic in both directions.

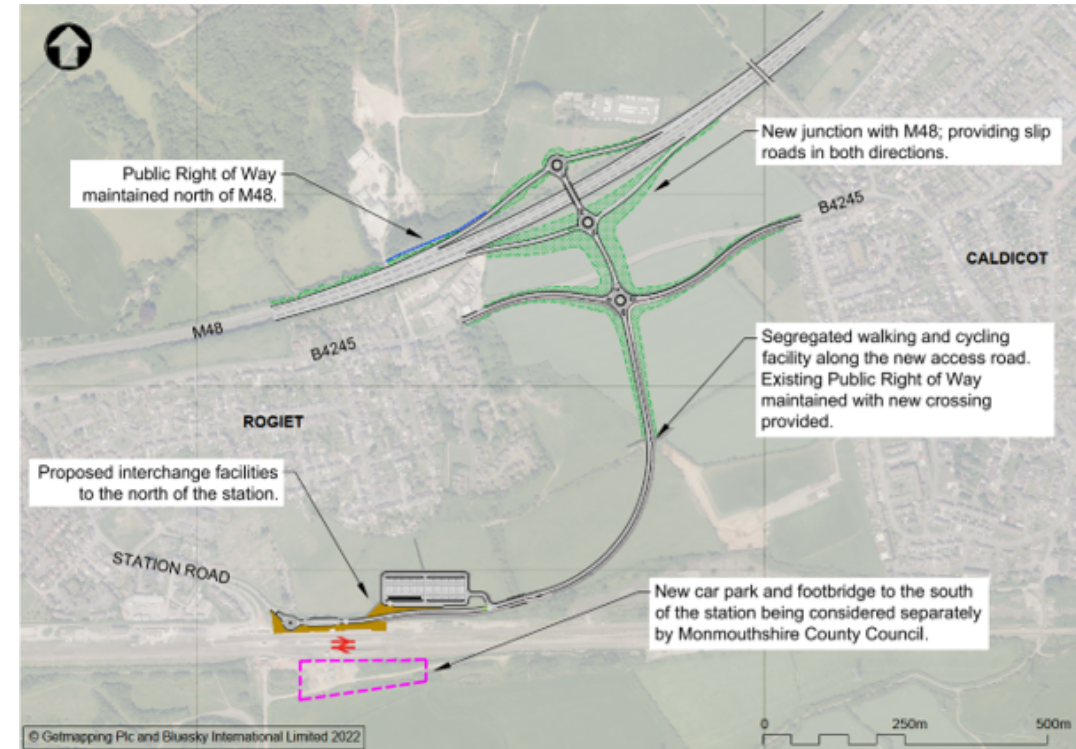
Option 2a: East Facing Slips Only



Pros:

- Allows users to switch easily between rail, bus, walking, cycling and car
- Good links with existing and proposed walking and cycling networks
- Can be delivered as part of a phased approach with Option 1

Option 2b: Slip Roads in Both Directions Only



Cons:

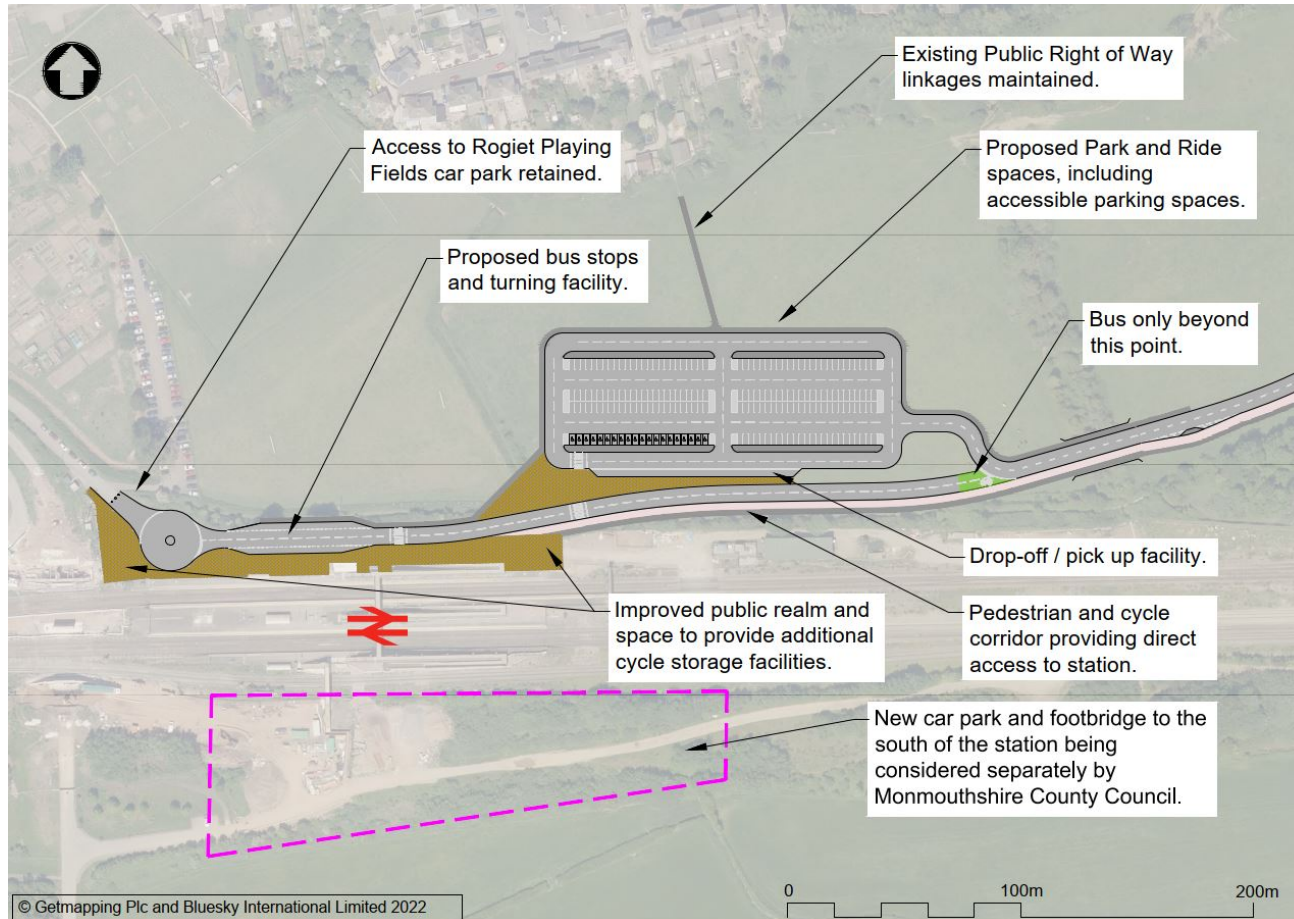
- High cost
- Uses the highest amount of natural land compared to other options
- Requires realignment of the B4245
- Impact on existing landscape



Option 3: Station / Interchange Layout



A high-level concept has been developed for the interchange facility to the north of the station for consideration in relation to the wider access improvements. This ensures that the objective “to enable users to switch easily between transport modes at the station” can be met through design of the scheme.



Have your say

We are committed to giving everyone a voice in the development of the transport system.

A public consultation on the Options for Improving Access to Severn Tunnel Junction station will be carried out for a six-week period, from **1st February** to **11th March 2022**.

You can respond by completing the online survey accessible from <https://gov.wales/severn-tunnel-junction-access>. Alternatively, you can download the form and e mail the completed form to engagement@tfw.wales or post to:

The Stakeholder Engagement team,
Transport for Wales,
3 Llys Cadwyn,
Pontypridd,
CF37 4TH

We thank you in advance for your contribution. We will seek your views again in the future, before taking forward any of the proposals.

