

Easy Read



Llywodraeth Cymru
Welsh Government

Mental Health and Wellbeing Strategy

Response form



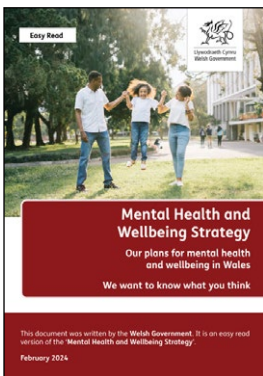
This document was written by the **Welsh Government**. It is an easy read version of the questions we want to ask you about the '**Mental Health and Wellbeing Strategy**'

February 2024

About this response form



We want to know what you think about our **Mental Health and Wellbeing Strategy**.



Please read the main document then answer the questions.



Words in **bold and blue** may be hard to understand. You can check what they mean on **page 36** of the main document.



Please send your response form back to us by **Tuesday 11 June 2024**.



You can fill this form in on your computer and email it to: mentalhealthandvulnerablegroups@gov.wales



Or print it and post it to:

Mental Health and Vulnerable Groups Team
Welsh Government
Cathays Park
Cardiff
CF10 3NQ



If you want this information in a different format or language, email: mentalhealthandvulnerablegroups@gov.wales.



[Easy Read Wales](#) made this document into Easy Read using **Photosymbols**. [To tell us what you think about this easy read version, click here.](#)

[Photosymbols Licence number 403527247](#)

About you



If you do not want anyone to know your name please tick here:



Your name:



Who you work for (if answering for work):



Your phone number or email address:



I am a:

(Please tick all that apply to you)

Person who has experience of **mental health** and **wellbeing** issues

Carer

Member of the public

Health care staff

Social care staff

Third sector staff

Other professional

I am replying for my organisation

I prefer not to say

Questions

Question 1



We want people in Wales to live in communities that support:

- their **mental health**
- and **wellbeing**.

We want people to be treated fairly. And to have the support they need. Services should support all people. And with whatever needs they have.

Do you agree with these ideas?

Strongly agree



Agree



Not sure



Disagree



Strongly disagree



Please tell us why you agree or disagree. Please write in the box below:

Question 2



On **page 15 and 16** we talked about our **principles** for the strategy.

Do you agree with these principles?

Strongly agree

Agree

Not sure

Disagree

Strongly disagree



Please tell us why you agree or disagree. Please write in the box below:

Questions about our Vision Statements

Question 3



On page 17 to 23 we talk about Vision Statement 1:

People can protect and improve their **mental health** and **wellbeing**.

Do you agree with this?

Strongly agree

Agree

Not sure

Disagree

Strongly disagree



Please tell us why you agree or disagree. Please write in the box below:

Question 4



On page 24 to 26 we talk about Vision Statement 2:

The Welsh Government works together to improve **mental health** and **wellbeing**.

Do you agree with this?

Strongly agree

Agree

Not sure

Disagree

Strongly disagree



Please tell us why you agree or disagree. Please write in the box below:

Question 5



On page 27 to 29 we talk about Vision Statement 3:

People get support whoever they speak to. And they get the right support when they first ask for help.

Do you agree with this?

Strongly agree



Agree



Not sure



Disagree



Strongly disagree



Please tell us why you agree or disagree. Please write in the box below:

Question 6

On page 30 to 33 we talk about Vision Statement 4:



People get the support from services that is right for them. They get this as quickly as possible, and in the right way.

Do you agree with this?

Strongly agree

Agree

Not sure

Disagree

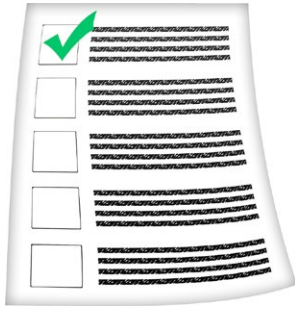
Strongly disagree



Please tell us why you agree or disagree. Please write in the box below:

Other questions

Question 7



On **page 34 to 35** we talk about other ways we want to improve the mental health system as a whole.

Do you agree with these ideas?

Strongly agree

Agree

Not sure

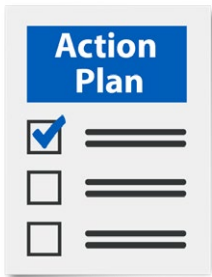
Disagree

Strongly disagree



Please tell us why you agree or disagree. Please write in the box below:

Question 8



We will also have delivery plans. These will show how we will achieve our goals. They will be updated often.

Are there any actions you would like to be included in these plans?

Question 9



This strategy is for all age groups.

- babies
- children
- young people
- adults
- and older people.

Was this made clear in the strategy?

Yes

No

Not sure

Please tell us if you have any comments. You can write in the box below:

Question 10



Do you think this strategy could have any effect on the Welsh language?

Yes

No

Not sure

What could we do to make sure it is treated fairly to the English language? If you have any comments, you can write in the box below:



Question 11

Is there anything else you want to say about the strategy? Please write it here: