



Llywodraeth Cymru
Welsh Government

STATISTICS

Notifications to Care Inspectorate Wales related to COVID-19 in adult care homes: 1 March 2020 to 22 April 2021

Notifications related to COVID-19 in adult care homes during the coronavirus pandemic for 1 March 2020 to 22 April 2021.

First published: 27 April 2021

Last updated: 27 April 2021

This document was downloaded from GOV.WALES and may not be the latest version.

Go to <https://gov.wales/notifications-care-inspectorate-wales-related-covid-19-adult-care-homes-1-march-2020-22-april-2021-html> for the latest version.

Get [information on copyright](#).

Contents

Main points

Notification of cases

Notification of deaths

Background

Quality and methodology information

Contact details

In order to improve the timely availability of data related to coronavirus (COVID-19) in adult care homes the Welsh Government and Care Inspectorate Wales (CIW) have agreed to publish provisional counts of the number of adult care homes reporting one or more confirmed cases of COVID-19 and provisional counts of deaths in care homes, based on notifications by care home providers to CIW. This information helps to monitor the impact of COVID-19 and contributes to Wales and UK wide monitoring and decision-making.

This release includes information on the number of adult care homes reporting one or more confirmed cases of COVID-19 in the last 7 and 20 days to CIW. This data shows only the number of care homes that have notified CIW of a confirmed COVID-19 case among their staff or service users (residents) and does not show the total number of coronavirus cases for that service. Since the data shows the number of care homes that reported one or more COVID-19 cases in the last 7 days or 20 days, it does not show whether there is currently an active coronavirus case in the service. This data is reliant on registered providers reporting consistently and accurately. This data has been collected to inform CIW's regulatory activities and decisions, and to enable it to monitor care

This document was downloaded from GOV.WALES and may not be the latest version.

Go to <https://gov.wales/notifications-care-inspectorate-wales-related-covid-19-adult-care-homes-1-march-2020-22-april-2021-html> for the latest version.

Get [information on copyright](#).

homes with outbreaks of COVID-19.

From 9 April 2021, CIW have changed the frequency of the data they supply to Welsh Government on the number of adult homes reporting one or more confirmed cases of COVID-19. Instead of daily, data is now provided weekly on a Thursday. The reason for making this change is due to there being little change in the data on a day to day basis. Therefore, moving from daily reporting to weekly reporting allows CIW to release some inspector capacity, from checking the data on a daily basis, enabling them to return to an increase in inspections of services. The only data affected by this change is the notifications of cases data. Where we previously reported on the number of COVID-19 cases in the last 7 or 20 days based on data as of the Friday, we will now refer to the data as of the Thursday from this point onwards. Daily data from before 9 April 2021 is still displayed in Chart 1 and provided on StatsWales to give a full picture of the data available. After 9 April 2021 weekly data is displayed which reduces the fluctuations in the data.

For consistency with the cases data, we have also moved the latest data for the provisional number of deaths in adult care homes to as of the Thursday, rather than as of the Friday, but this will remain as daily data.

Main points

- 7 adult care homes in Wales have notified CIW of one or more confirmed cases of COVID-19, in staff or residents, in the last 7 days.
- 32 adult care homes in Wales have notified CIW of one or more confirmed cases of COVID-19, in staff or residents, in the last 20 days.
- CIW have been notified of 8,841 deaths in adult care home residents since 1 March 2020. This covers deaths from all causes, not just COVID-19.
- 69% of total deaths from 1 March 2020 were for residents in care homes with nursing.
- CIW has been notified of 1,920 care home resident deaths with suspected or confirmed COVID-19 since 1 March 2020. This makes up 22% of all adult care home residents reported deaths during this period.

This document was downloaded from GOV.WALES and may not be the latest version.

Go to <https://gov.wales/notifications-care-inspectorate-wales-related-covid-19-adult-care-homes-1-march-2020-22-april-2021-html> for the latest version.

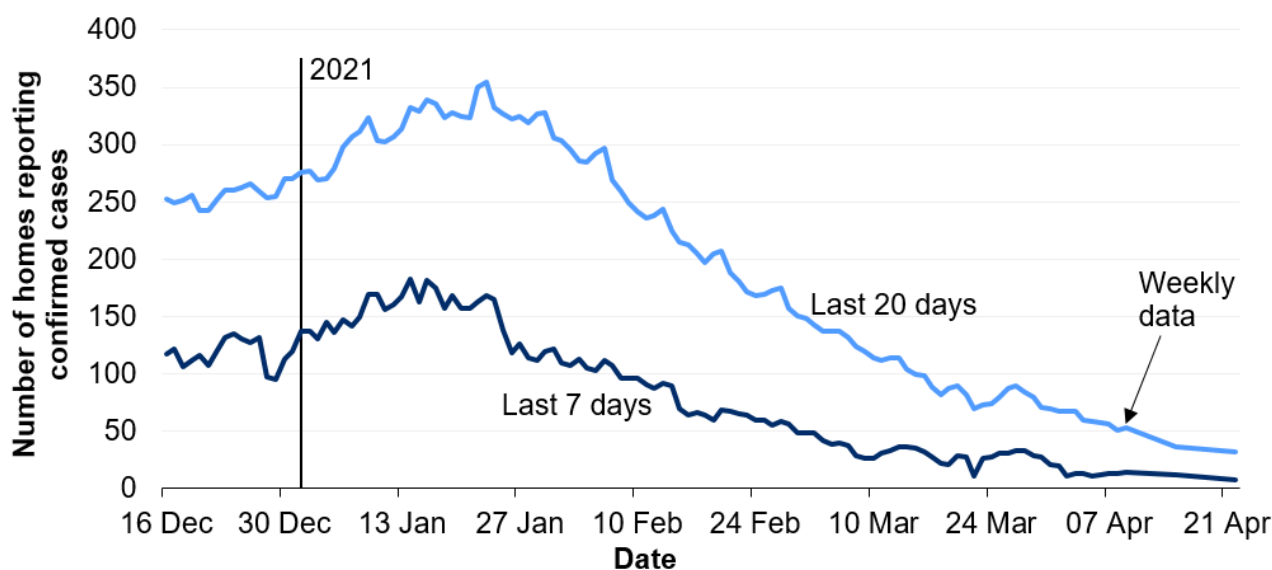
Get [information on copyright](#).

Notification of cases

This section covers the number of adult care homes reporting one or more confirmed cases of COVID-19 in the last 7 and 20 days to CIW. The number of adult care homes also includes data for combined adults and child care homes. The data does not show the current number of confirmed COVID-19 cases in adult care homes or whether there is currently an active case in the care home.

From 9 April 2021 CIW have changed the frequency in which they supply data to Welsh Government on the number of adult homes reporting one or more confirmed cases of COVID-19. Instead of daily, data is now provided weekly on a Thursday. Daily data from before 9 April 2021 is still displayed in Chart 1 to give a full picture of the data available. After 9 April 2021 weekly data is displayed, which reduces the fluctuations in the data.

Chart 1: Number of adult care homes which have notified CIW of one or more confirmed cases of COVID-19 in the past 7 or 20 days, up to 22 April 2021



Source: Notifications of Cases received by Care Inspectorate Wales

Notifications to Care Inspectorate Wales related to COVID-19 in adult care homes on StatsWales

This document was downloaded from GOV.WALES and may not be the latest version.

Go to <https://gov.wales/notifications-care-inspectorate-wales-related-covid-19-adult-care-homes-1-march-2020-22-april-2021-html> for the latest version.

Get [information on copyright](#).

This data is subject to revisions and previous publications are not revised. The latest figures are the most up to date figures.

In Wales there are 1,049 adult care homes and 17 adult and child care homes. Of these, up to 22 April 2021:

- 7 (0.7%) notified CIW of one or more confirmed cases of COVID-19, in staff or residents, in the past 7 days. This is a decrease compared to 12 (1.1%) in the 7 days up to 15 April 2021. The number of notifications is now at the lowest since the guidance change on 17 December 2020.
- 32 (3.0%) notified CIW of one or more confirmed cases of COVID-19, in staff or residents, in the past 20 days. This is a decrease compared to 36 (3.4%) in the 20 days up to 15 April 2021. The number of notifications is now at the lowest number since the guidance change on 17 December 2020.

Notification of deaths

This section covers the number of deaths of residents in adult care homes, based on statutory notifications by care home providers to CIW.

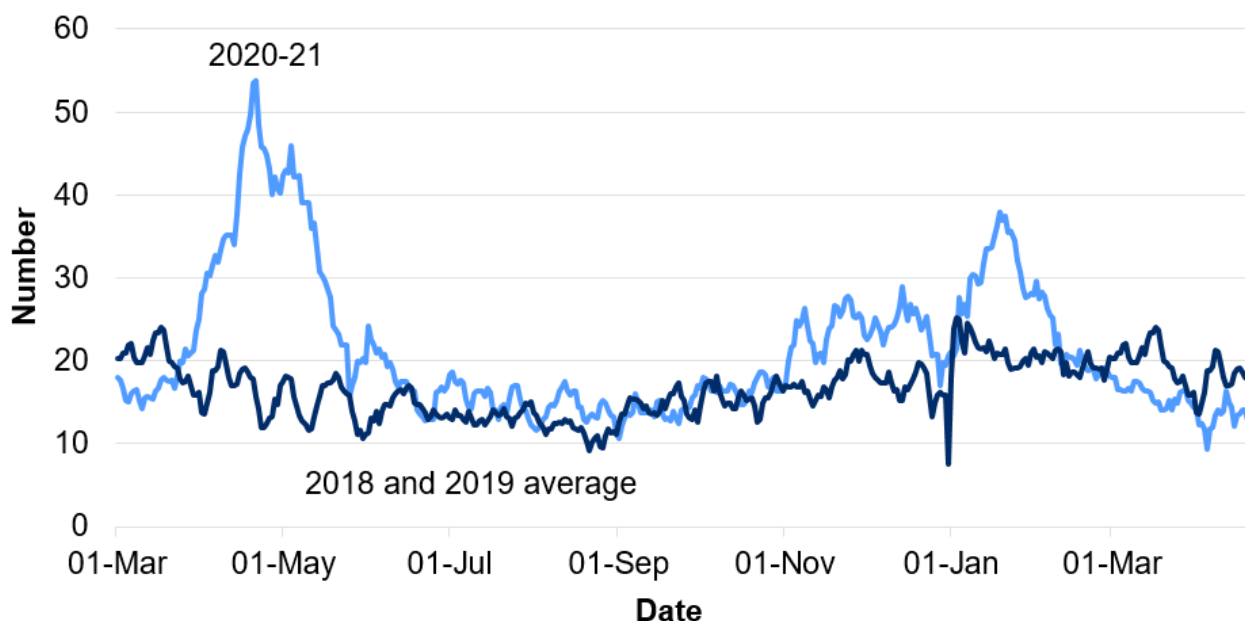
From 9 April 2021 Care Inspectorate Wales (CIW) have changed the frequency in which they supply data to Welsh Government on the number of adult homes reporting one or more confirmed cases of COVID-19. Instead of daily, data is now provided weekly on a Thursday. For consistency, we have also moved the deaths data to as of the Thursday, rather than the Friday, but this data will remain as daily data.

This document was downloaded from GOV.WALES and may not be the latest version.

Go to <https://gov.wales/notifications-care-inspectorate-wales-related-covid-19-adult-care-homes-1-march-2020-22-april-2021-html> for the latest version.

Get [information on copyright](#).

Chart 2: Notifications of deaths of residents received from adult care homes, includes deaths from all causes (7 day rolling average), from 1 March 2020



Source: Notifications of Service User Deaths received by Care Inspectorate Wales

Notifications to Care Inspectorate Wales related to COVID-19 in adult care homes on StatsWales

The average of the 2018 and 2019 7 day rolling averages have been added as a comparison to the 2020 and 2021 data.

Due to the leap year in 2020, data for the 29 February is the average of the 28 February and the 1 March for 2018 and 2019.

Daily data is only available from 1 January 2018, therefore the 7 day average between 1 and 7 January 2018 has been calculated using the days where the data is available. More information can be found in the [quality and methodology section](#).

- Between 1 March 2020 and 22 April 2021, CIW have been notified of 8,841 deaths in adult care home residents. This covers deaths from all causes, not just COVID-19.

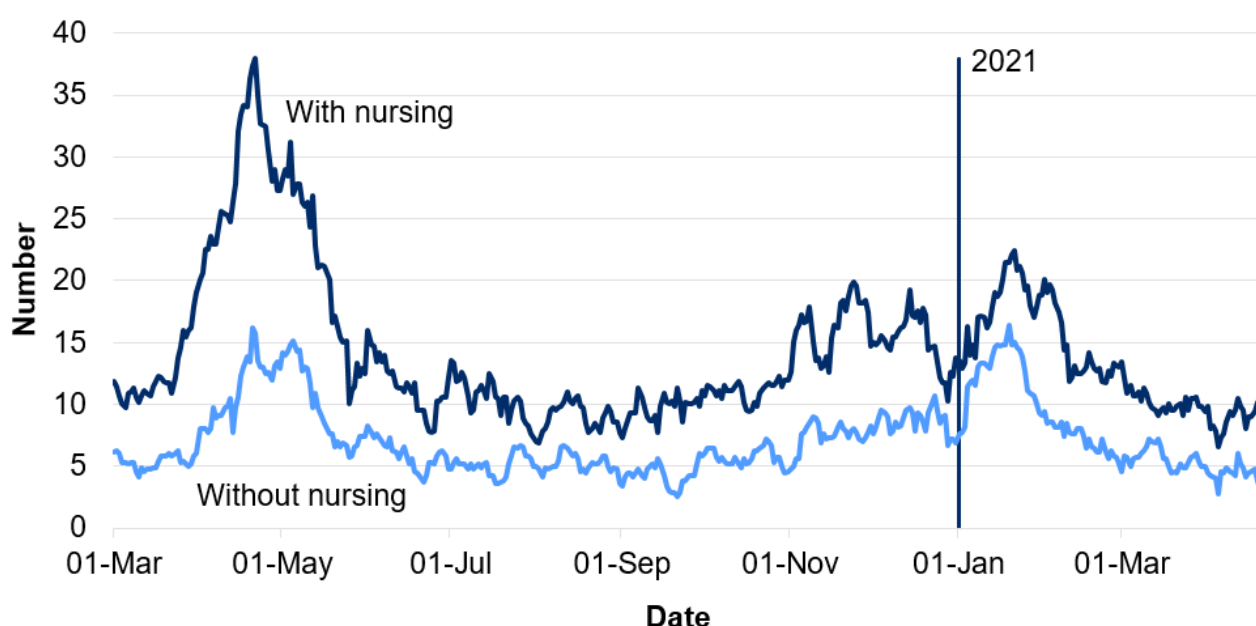
This document was downloaded from GOV.WALES and may not be the latest version.

Go to <https://gov.wales/notifications-care-inspectorate-wales-related-covid-19-adult-care-homes-1-march-2020-22-april-2021-html> for the latest version.

Get [information on copyright](#).

- Notifications of deaths in adult care home residents rose sharply from early April 2020 to early May 2020 to the highest level since the start of the pandemic. After this they fell to levels close to pre-pandemic levels and generally followed the same trend as the 2018 and 2019 average until the end of October 2020.
- Between early November 2020 and the end of December 2020, notifications followed a similar trend to the 2018 and 2019 average but the numbers were consistently higher. January and February 2021 saw a sharp increase in the number of notifications but this remained below the peak in 2020. Since 1 March 2021, the number of notifications has gradually decreased and been below the 2018 and 2019 average. In early April, there was an increase in the number of notifications but in recent days these have decreased again. However, throughout April they have remained below the 2018 and 2019 average.

Chart 3: Deaths of residents notified to CIW from adult care homes by availability of nursing (7 day rolling average), 1 March 2020 to 22 April 2021



Source: Notifications of Service User Deaths received by Care Inspectorate Wales

Notifications to Care Inspectorate Wales related to COVID-19 in adult care homes on StatsWales

This document was downloaded from GOV.WALES and may not be the latest version.

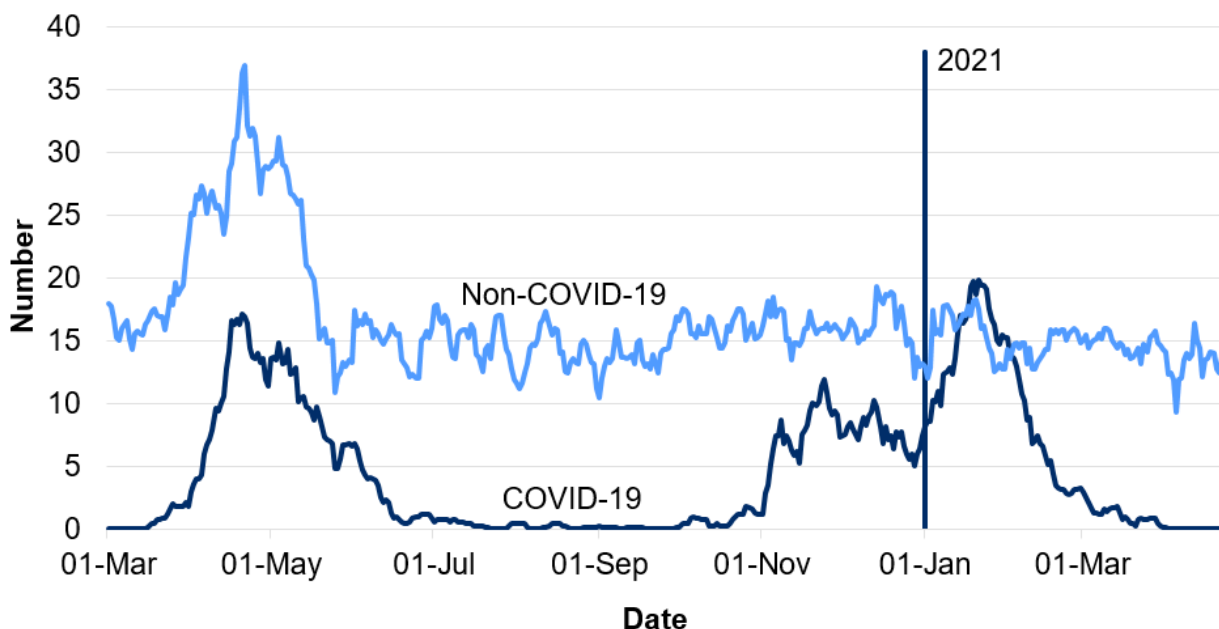
Go to <https://gov.wales/notifications-care-inspectorate-wales-related-covid-19-adult-care-homes-1-march-2020-22-april-2021-html> for the latest version.

Get [information on copyright](#).

A full breakdown of all data from 1 January 2018 can be found on [StatsWales](#). During 2019, care home services were undergoing re-registration with CIW due to new legislation, which introduced a new method of notifying CIW of deaths of care home residents. This may have resulted in some disruptions to notifications being submitted.

From 1 March 2020 to 22 April 2021 CIW have been notified of 5,885 deaths (67%) with nursing and 2,956 deaths (33%) without nursing in adult care home residents.

Chart 4: Deaths notified to Care Inspectorate Wales of care home residents by cause of death and day of notification (7 day rolling average), 1 March 2020 to 22 April 2021



Source: Notifications of Service User Deaths received by Care Inspectorate Wales

Notifications to Care Inspectorate Wales related to COVID-19 in adult care homes on StatsWales

COVID-19 related deaths included in the chart include both confirmed and suspected COVID-19. The [care home testing policy](#) was expanded on 16 May to include testing being offered to all symptomatic and asymptomatic staff and residents who have never tested positive for COVID-19 even where the home

This document was downloaded from GOV.WALES and may not be the latest version.

Go to <https://gov.wales/notifications-care-inspectorate-wales-related-covid-19-adult-care-homes-1-march-2020-22-april-2021-html> for the latest version.

Get [information on copyright](#).

has not reported possible or confirmed cases. More widespread testing may have resulted in some deaths being recorded as non COVID-19 deaths when previously they may have been notified as suspected COVID-19 deaths.

Between 1 March 2020 to 22 April 2021

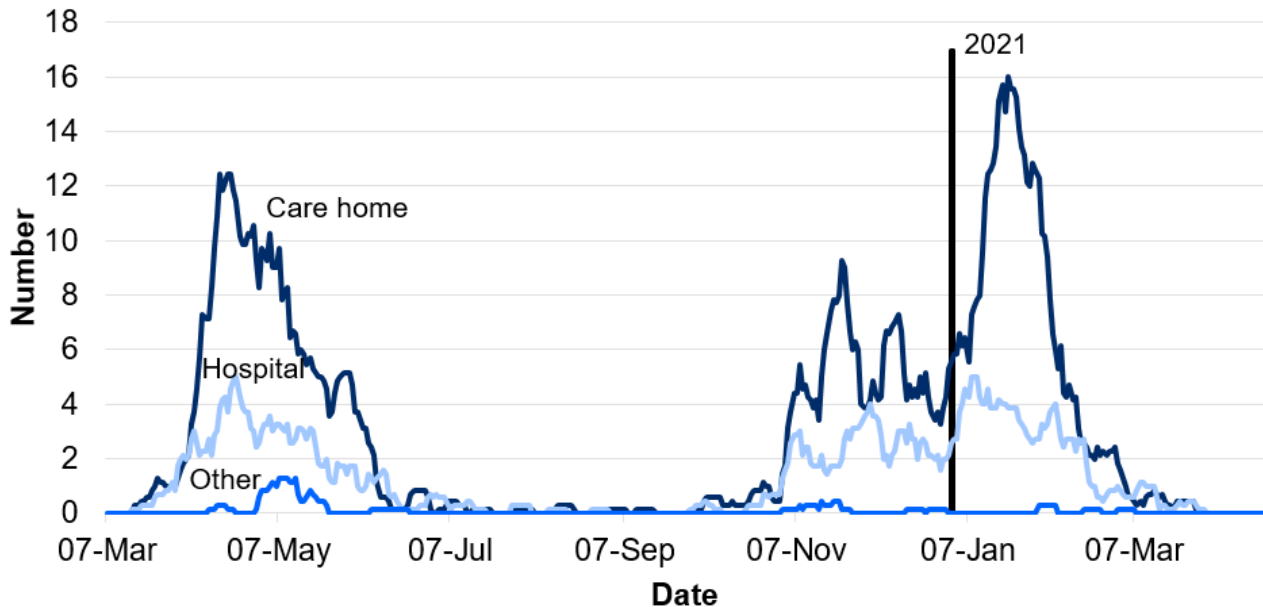
- CIW has been notified of 1,920 care home resident deaths with suspected or confirmed COVID-19. This makes up 22% of all reported deaths.
- 1,407 of these were reported as confirmed COVID-19 and 513 suspected COVID-19.
- The first suspected COVID-19 death notified to CIW was on the 16 March 2020, which occurred in a hospital setting.
- At the start of November 2020 there was an increase in the number of COVID-19 related deaths notified to CIW. There was a further increase in January 2021 that exceeded the number seen at the end of April 2020.
- CIW have not been informed of any COVID-19 related deaths since 26 March 2021. This is similar to the number observed at the start of November 2020.

This document was downloaded from GOV.WALES and may not be the latest version.

Go to <https://gov.wales/notifications-care-inspectorate-wales-related-covid-19-adult-care-homes-1-march-2020-22-april-2021-html> for the latest version.

Get [information on copyright](#).

Chart 5: Notifications of deaths of adult care home residents with confirmed or suspected COVID-19 by location of death and day of notification (7 day rolling average), 7 March 2020 to 22 April 2021



Source: Notifications of Service User Deaths received by Care Inspectorate Wales

Notifications to Care Inspectorate Wales related to COVID-19 in adult care homes on StatsWales

Table 1: Notifications of deaths of adult care home residents with confirmed or suspected COVID-19 by location of death, 1 March 2020 to 22 April 2021

Ambulance	2
At the service	1,319
Hospital	564
Hospice	4

This document was downloaded from GOV.WALES and may not be the latest version.

Go to <https://gov.wales/notifications-care-inspectorate-wales-related-covid-19-adult-care-homes-1-march-2020-22-april-2021-html> for the latest version.

Get [information on copyright](#).

Other	15
Persons own home	16
Unknown	0
Total	1,920

Source: Notifications of Service User Deaths received by Care Inspectorate Wales (CIW)

Between 1 March 2020 to 22 April 2021

- 69% of suspected and confirmed COVID-19 deaths were located in the care home.
- 29% of suspected and confirmed COVID-19 deaths were located in hospital.

Background

The data in this release is based on the date of the notification rather than the date a COVID-19 case has been confirmed or the date of death. CIW notifications of confirmed cases and cause of death are reported by the care home provider. Due to working patterns, there tends to be a lower number of notifications of confirmed COVID-19 cases or deaths during the weekends when compared to notifications for Monday to Friday. There is often a larger number of notifications on a Monday.

Notifications of confirmed COVID-19 cases in adult care homes

The data presented here is based on the notifications of confirmed cases received by CIW from adult care homes, which relate to their staff or service

This document was downloaded from GOV.WALES and may not be the latest version.

Go to <https://gov.wales/notifications-care-inspectorate-wales-related-covid-19-adult-care-homes-1-march-2020-22-april-2021-html> for the latest version.

Get [information on copyright](#).

users (residents). The care home provider only needs to notify CIW of a confirmed case based on a positive laboratory test result. There may also be a potential delay between a confirmed COVID-19 case and when the care home providers notify CIW. The number of confirmed COVID-19 cases referred to here is different to the number of new cases published by Public Health Wales. These sources of data are not directly comparable due to differences in timing and the level of validation carried out. We are publishing this data to ensure access to the CIW data is transparent and to provide timely indication of the trends for all notifications of confirmed COVID-19 cases in care homes in Wales. However CIW are reliant on providers notifying them consistently and accurately. CIW has requested that providers notify without delay but it is important to note that:

- the data does not tell us the current number of confirmed cases in any one service (adult care home)
- this data is only as accurate as the information submitted by the provider
- providers only informed of confirmed cases from 19 August 2020 onwards

Notifications of COVID-19 deaths in adult care homes

The data presented here are based on the Notifications of Service User Deaths received by CIW from adult care homes which relate to their residents. The location of death may be in the care home, in hospital or another location. The data is not based on laboratory confirmed tests, and are therefore not directly comparable with Public Health Wales (PHW) data. In their rapid surveillance dashboard, PHW include some notifications received from care homes with a positive laboratory confirmed test for COVID-19. Therefore these data **cannot** be added together. We are publishing this data to ensure access to the CIW data is transparent and to provide a timely indication of trends for all deaths to care home residents in Wales, from COVID-19 or otherwise. However, CIW are reliant on providers notifying them and being able to provide an indication that they are COVID-19 related deaths. The **data published by the Office for National Statistics (ONS)**, which includes all deaths where COVID-19 was a factor according to the death certificate, report higher numbers of deaths related to COVID-19 in care homes in Wales. We will continue to work with CIW and ONS to explore the quality of these data.

This document was downloaded from GOV.WALES and may not be the latest version.

Go to <https://gov.wales/notifications-care-inspectorate-wales-related-covid-19-adult-care-homes-1-march-2020-22-april-2021-html> for the latest version.

Get [information on copyright](#).

Data included in this release is correct at 23:59 22 April 2021.

Quality and methodology information

Context

In order to improve the timely availability of data on confirmed cases and deaths in care homes caused by the coronavirus (COVID-19), the Welsh Government and Care Inspectorate Wales (CIW) have agreed to publish provisional counts of confirmed cases and deaths in care homes, based on statutory notifications by care home providers to CIW. This information helps to monitor the impact of COVID-19 and contributes to Wales and UK wide monitoring and decision-making.

Relevance

As the independent regulator for care home providers in Wales, providers are statutorily required to notify CIW of deaths to residents. Care home providers are also statutorily required to notify CIW of outbreaks of infectious diseases such as COVID-19. CIW has requested that care home providers to notify it of each confirmed COVID-19 case in residents or staff within the care home, but there is no statutory obligation to do this. In addition, these statistics are used daily for a number of other purposes:

- to provide CIW with intelligence to inform its regulatory activity and decisions
- to understand the impact of the pandemic on care homes
- to support evidence-based advice on future decisions around reviews of lockdown arrangements
- contributions to Wales and UK wide monitoring and decision-making

Accuracy

Daily data is only available from 1 January 2018, therefore the 7 day average

This document was downloaded from GOV.WALES and may not be the latest version.

Go to <https://gov.wales/notifications-care-inspectorate-wales-related-covid-19-adult-care-homes-1-march-2020-22-april-2021-html> for the latest version.

Get [information on copyright](#).

between 1 and 7 January 2018 has been calculated using the days where the data is available. For example, for 1 January 2018, this will be the data as at this date. For the 2 January 2018, this will be the average of the previous 2 days, this continues until 7 January 2018 when the full 7 day average can be calculated which is then continued throughout the time series.

From 9 April 2021, CIW have changed the frequency of the data they supply to Welsh Government on the number of adult homes reporting one or more confirmed cases of COVID-19. Instead of daily, data is now provided weekly on a Thursday. The reason for making this change is due to there being little change in the data on a day to day basis. Therefore, moving from daily reporting to weekly reporting allows CIW to release some inspector capacity, from checking the data on a daily basis, enabling them to return to an increase in inspections of services. The only data affected by this change is the notifications of cases data. Where we previously reported on the number of COVID-19 cases in the last 7 or 20 days based on data as of the Friday, we will now refer to the data as of the Thursday from this point onwards. Daily data from before 9 April 2021 is still displayed in Chart 1 and in the StatsWales cubes to give a full picture of the data available. After 9 April 2021 weekly data is displayed which reduces the fluctuations in the data.

For consistency with the cases data, we have also moved the latest data for the provisional number of deaths in adult care homes to as of the Thursday, rather than as of the Friday, but this will remain as daily data. This change will also be made to the figures published to StatsWales with this release.

The number of adult care homes in this report can fluctuate. This is due to either new care homes being registered for the first time or other care homes closing. For example during November 2020, 6 adult care homes were removed and 4 were approved. For the notifications of confirmed COVID-19 cases in adult care homes data is collected on a weekly basis via an online form developed and maintained by Care Inspectorate Wales. For the Notifications of COVID-19 deaths in adult care homes data is collected on a daily basis via an online form developed and maintained by Care Inspectorate Wales. The data is validated against previous returns and any significant changes are queried.

Data includes all notifications up to midnight each day.

This document was downloaded from GOV.WALES and may not be the latest version.

Go to <https://gov.wales/notifications-care-inspectorate-wales-related-covid-19-adult-care-homes-1-march-2020-22-april-2021-html> for the latest version.

Get [information on copyright](#).

The COVID-19 cases data covers the number of care homes that have reported one or more confirmed cases, not the number of cases or the number of reports.

The COVID-19 cases data covers residents and staff working at the home.

The deaths data collection covers residents of adult care homes.

Care homes are required to notify CIW of the location of death and cause of death. Prior to 29 April 2020 this was via a free text box and CIW have used manual searches on the data to produce summaries by category. From 29 April 2020 the form has been amended to include mandatory tick box categories for COVID-19 Confirmed or Suspected and location (hospital, care home, hospice, ambulance, other). Therefore there is a change to the methodology used to produce these figures from 29 April 2020.

In terms of 'Confirmed' COVID-19, from 29 April onwards, this has been provided to CIW by the care home provider by means of an answer to the question: 'Was the death a result of confirmed COVID-19?'

Prior to this date, the care home provider wasn't asked this question, therefore, 'Confirmed' for these is where CIW's inspectors have reviewed the free text data provided by the care home provider (on the questions 'cause of the person's death, if known and confirmed by a medical practitioner' and 'summary of the circumstances leading up to the persons death and all contributing factors') and determined that it relates to a confirmed case.

In both scenarios CIW are reliant on the care home provider to inform them appropriately of a confirmed case.

Following Welsh Government guidance issued on 17 December 2020, COVID-19 outbreaks can now be declared as over once 20 days have elapsed since the last affected individual returns a positive test or manifests symptoms. Multi-disciplinary teams must take into account the specific circumstances of individual homes, including the Infection Prevention and Control (IPC) processes that have been applied. In line with this guidance, CIW have revised their daily notifications report to replace the previous 28 day measure to a 20 day measure. This change is reflected in the data presented in this release.

This document was downloaded from GOV.WALES and may not be the latest version.

Go to <https://gov.wales/notifications-care-inspectorate-wales-related-covid-19-adult-care-homes-1-march-2020-22-april-2021-html> for the latest version.

Get [information on copyright](#).

Timeliness and punctuality

The notification of deaths data in this release provides data from the 1 March 2020 and onwards, and the same time period two years prior. The notification of confirmed COVID-19 cases data in this release provides data from 16 December 2020 onwards to reflect the change in guidance that occurred on 17 December 2020.

Accessibility and clarity

This statistical release has been pre-announced and then published on the [Statistics and Research section of our website](#). It is accompanied by [StatsWales tables](#) to allow users to have direct access to the data that underlies the charts in this release.

Comparability

Data for [England](#) was first published on 28 April 2020.

The Chief Statistician has produced a [blog](#) of the different sources of data on Coronavirus (COVID-19) related deaths in Wales.

National Statistics status

These statistics are not National Statistics. However, as far as has been practicable, they have been collected and validated in accordance with the pillars and principles within the [Code of Practice for Statistics](#). We continue to develop the data collection and quality assurance process to improve the data.

These statistics have been produced quickly in response to developing world events.

This document was downloaded from GOV.WALES and may not be the latest version.

Go to <https://gov.wales/notifications-care-inspectorate-wales-related-covid-19-adult-care-homes-1-march-2020-22-april-2021-html> for the latest version.

Get [information on copyright](#).

Well-being of Future Generations Act

The Well-being of Future Generations Act 2015 is about improving the social, economic, environmental and cultural wellbeing of Wales. The Act puts in place seven wellbeing goals for Wales. These are for a more equal, prosperous, resilient, healthier and globally responsible Wales, with cohesive communities and a vibrant culture and thriving Welsh language. Under section (10)(1) of the Act, the Welsh Ministers must (a) publish indicators ('national indicators') that must be applied for the purpose of measuring progress towards the achievement of the wellbeing goals, and (b) lay a copy of the national indicators before Senedd Cymru. The 46 national indicators were laid in March 2016.

Information on the indicators, along with narratives for each of the well-being goals and associated technical information is available in the [Well-being of Wales report](#).

Further information on the [Well-being of Future Generations \(Wales\) Act 2015](#).

The statistics included in this release could also provide supporting narrative to the national indicators and be used by public services boards in relation to their local wellbeing assessments and local wellbeing plans.

Next update

The next release will be at 9.30am Tuesday 11 May 2021.

We want your feedback

We welcome any feedback on any aspect of these statistics which can be provided by email to kas.covid19@gov.wales.

This document was downloaded from GOV.WALES and may not be the latest version.

Go to <https://gov.wales/notifications-care-inspectorate-wales-related-covid-19-adult-care-homes-1-march-2020-22-april-2021-html> for the latest version.

Get [information on copyright](#).

Contact details

Statistician: Alex Fitzpatrick

Telephone: 0300 025 9016

Email: kas.covid19@gov.wales

Media: 0300 025 8099

SFR 125/2021

This document was downloaded from GOV.WALES and may not be the latest version.

Go to <https://gov.wales/notifications-care-inspectorate-wales-related-covid-19-adult-care-homes-1-march-2020-22-april-2021-html> for the latest version.

Get [information on copyright](#).

About this document

This document is a copy of the web page [Notifications to Care Inspectorate Wales related to COVID-19 in adult care homes: 1 March 2020 to 22 April 2021](#) downloaded.

Go to <https://gov.wales/notifications-care-inspectorate-wales-related-covid-19-adult-care-homes-1-march-2020-22-april-2021-html> for the latest version.

This document may not be fully accessible, for more information refer to our [accessibility statement](#).

Get [information on copyright](#).

This document was downloaded from GOV.WALES and may not be the latest version.

Go to <https://gov.wales/notifications-care-inspectorate-wales-related-covid-19-adult-care-homes-1-march-2020-22-april-2021-html> for the latest version.

Get [information on copyright](#).