



Llywodraeth Cymru
Welsh Government

STATISTICS

Public service vehicles (buses and taxis): April 2019 to March 2020

Data on bus services, bus passes, frequency of buses and taxis for April 2019 to March 2020.

First published: 24 March 2021

Last updated: 24 March 2021

This document was downloaded from GOV.WALES and may not be the latest version.

Go to <https://www.gov.wales/public-service-vehicles-buses-and-taxis-april-2019-march-2020.html> for the latest version.

Get [information on copyright](#).

Contents

Main points

The local bus industry in Wales

Local bus services: fares

Local bus services: journeys

Local bus services: distance covered

Licensed taxis and private hire vehicles in Wales

Quality information

Contact details

This document was downloaded from GOV.WALES and may not be the latest version.

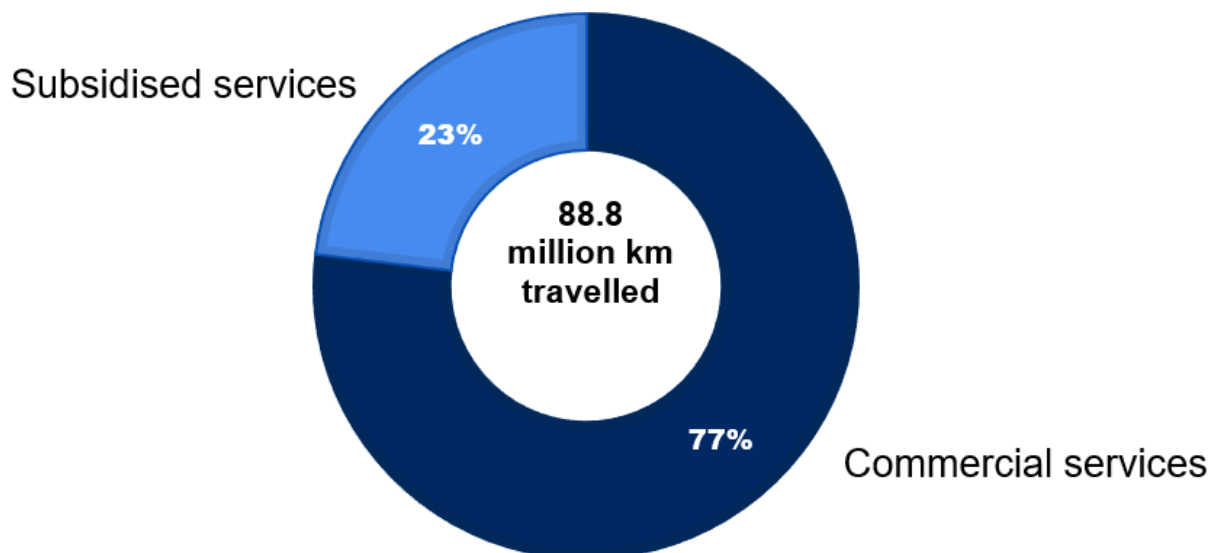
Go to <https://www.gov.wales/public-service-vehicles-buses-and-taxis-april-2019-march-2020-html> for the latest version.

Get [information on copyright](#).

The data in this release relates to the period from April 2019 to March 2020, which covers a small period at the start of the coronavirus (COVID-19) pandemic, and may have affected the data. Due to the way we collect the data (aggregate full year and financial year figures), we are unable to pinpoint its impact exactly.

Main points

Chart 1: Passenger journey by user service, 2019-20



- The number of journeys undertaken on local bus services in Wales, and the total distance travelled, have stabilised in recent years. This followed a long term decline in bus usage.
- 88.8 million passenger journeys were undertaken on local buses in Wales in 2019-20 covering a total of 88.8 million vehicle kilometres (chart 2).
- The number of drivers in 2019-20 were similar compared to 2018-19 whilst vehicles in operation decreased.
- There was a 0.1% increase in drivers to 3,756, whilst the number of vehicles

This document was downloaded from GOV.WALES and may not be the latest version.

Go to <https://www.gov.wales/public-service-vehicles-buses-and-taxis-april-2019-march-2020-html> for the latest version.

Get [information on copyright](#).

decreased by 2.9% to 2,378 (charts 3 and 5).

- Bus fares in Wales increased by 3.5% in 2020 compared to 2019, higher than the UK consumer price inflation rate over the same period (chart 6).
- As of March 2020 the number of Taxi registrations fell by 0.7% whilst private hire vehicle registrations dropped by 2.4% compared to 2019. A total of 4,923 taxis and 5,297 private hire vehicles were licensed as of March 2020 in Wales.

The local bus industry in Wales

Local bus services are defined as those services where passengers are carried 'at separate fares over short distances'^[1]. Bus services are a vital part of Welsh economic and social life. The 2011 Census showed that 23% of the population of Wales had no access to a car or van, and many people rely on bus services for travel to work, for hospital appointments, visiting friends, shopping and accessing leisure services.

During 2019-20, there were 88.8 million passenger journeys on local buses in Wales, with the services covering 88.8 million vehicle kilometres. Over three quarters (76.9%) of the distance was accounted for by commercial routes (chart 2).

The total distance travelled in 2019-20 represented a 12.5% fall compared to the previous year. Commercial services accounted for 76.9 per cent of the distance travelled. The latest figure is 28.2% lower than the distance travelled in 2009-10, a fall driven by a large decrease in the distance travelled on subsidised services (down 52.2%). Distances travelled on commercial services fell by 15.5% over the same period. The panel survey conducted by Department of Transport (DfT) in Great Britain had shown that passenger journeys had reduced by about 13% in the January to March quarter of 2020 compared to previous year.

This document was downloaded from GOV.WALES and may not be the latest version.

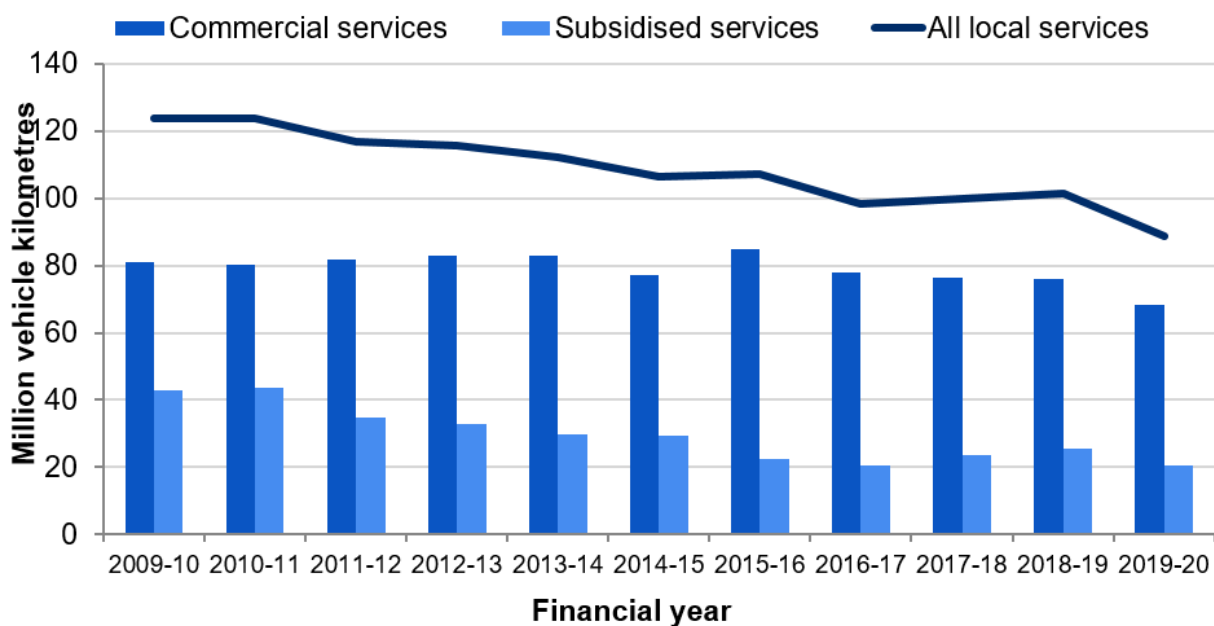
Go to <https://www.gov.wales/public-service-vehicles-buses-and-taxis-april-2019-march-2020.html> for the latest version.

Get [information on copyright](#).

Compared to 2018-19, distance travelled by subsidised services fell by 19.4% in 2019-20 whilst commercial services distance fell by 10.1%. The reductions in distance travelled may have been affected by COVID-19 restrictions as the government aimed at curbing the spread of the virus. Subsidised services are mainly used by the elderly and school children and the lockdown may affect this service more compared to commercial services.

[1] Separate fares are where each passenger makes a separate payment to use the service. Though journeys are defined as 'short distances' they may be of any overall length, as long as passengers can get off within 15 miles of the place at which they were picked up.

Chart 2: Distance travelled on local bus services, 2009-10 to 2019-20



Source: Welsh Government analysis of Department for Transport 'Public Service Vehicle Survey'

Vehicle kilometres and passenger journeys on buses and coaches by year on StatsWales

Broadly, the long term trend in distance travelled has tracked the trend in

This document was downloaded from GOV.WALES and may not be the latest version.

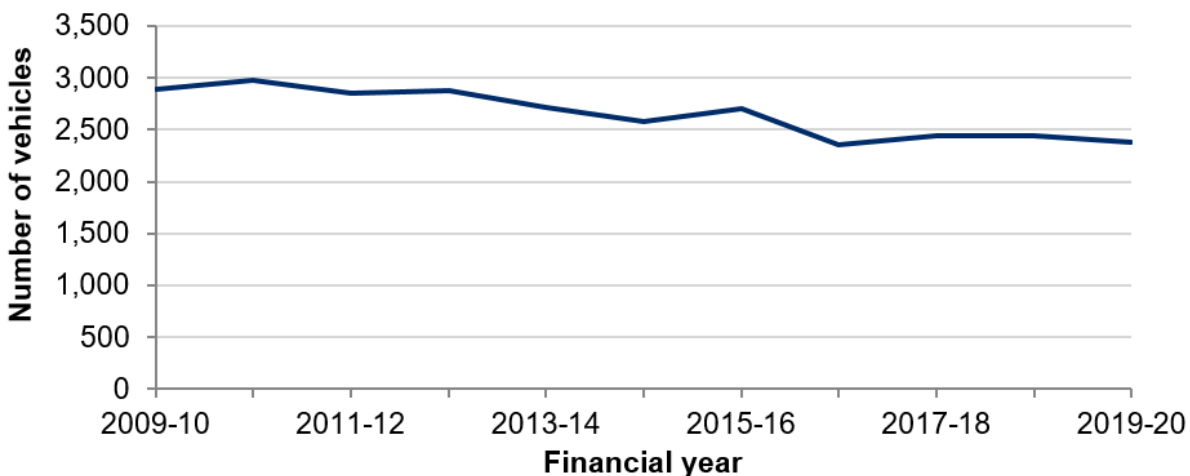
Go to <https://www.gov.wales/public-service-vehicles-buses-and-taxis-april-2019-march-2020.html> for the latest version.

Get [information on copyright](#).

numbers of buses in operation (chart 3). Continuing the long term decline in buses and distance covered, the number of buses has decreased in the latest year.

There were 2,378 locally operated vehicles in Wales in 2019-20, a decrease of 71 compared with the previous year. Since 2009-10 vehicle numbers have fallen by 513 (17.8%). These vehicles were operated on 1,539 registered bus routes (as of 31 March 2018).

Chart 3: Locally operated bus and coach vehicles, 2009-10 to 2019-20 (a) (b)



Source: Welsh Government analysis of Department for Transport 'Public Service Vehicle Survey'

(a) Covers all operators who run local bus services, including those who also do non-local work (eg. private hire, school contracts).

(b) Operators who do solely non-local work are excluded.

Number of bus and coach vehicles by year on StatsWales

The number of individual passenger journeys has followed a similar trend to that of distance travelled since 2007-08. Journey numbers had been relatively stable since 2014-15, but in the latest year were 24.0% lower than in 2009-10.

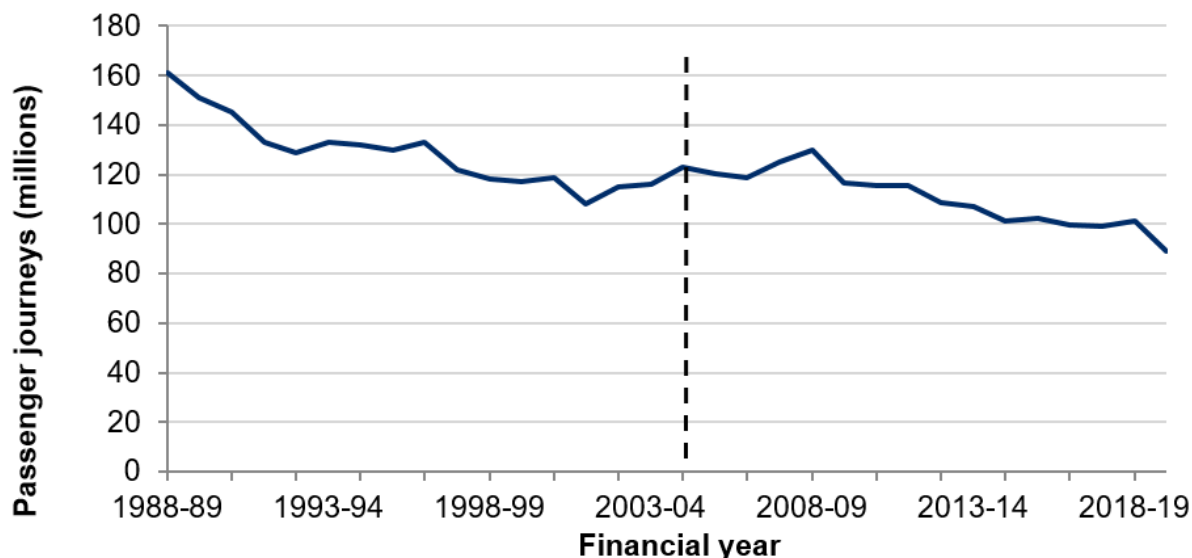
Compared to 2018-19, local bus journey fell by 12.2% in 2019-20 period, the largest decrease since records begun. Looking further back, there has been a fall of 41.2% between 1989-90 and 2019-20 (chart 4).

This document was downloaded from GOV.WALES and may not be the latest version.

Go to <https://www.gov.wales/public-service-vehicles-buses-and-taxis-april-2019-march-2020-html> for the latest version.

Get [information on copyright](#).

Chart 4: Local bus journeys, 1988-89 to 2019-20

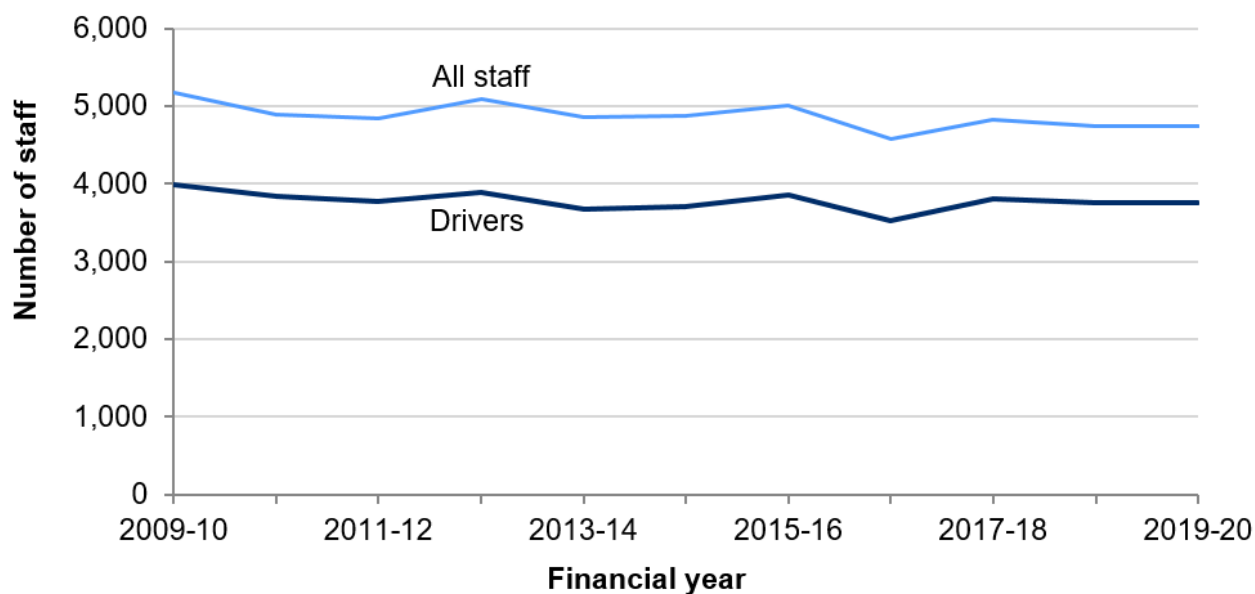


Source: Welsh Government analysis of Department for Transport 'Public Service Vehicle Survey'
Note: There was a break in series in 2004-05. In order to provide this longer run comparison, the older data were linked onto the post 2004-05 data before indexing onto the 1998-99 database.

Vehicle kilometres on local bus services by UK country and year on StatsWales

In 2019-20 the local bus industry had 4,749 staff, 79.1% of which (3,756) were drivers. There was a 0.1% decrease in the number of drivers in the latest year (chart 5), however, this did not affect number of staff compared to previous year. Over the long term there has been a slight downward trend in driver numbers and all staff numbers. Broadly, trends in drivers and all staff numbers are similar to the trend in buses in operation.

Chart 5: Staff employed on buses and coaches, 2009-10 to 2019-20



Source: Welsh Government analysis of Department for Transport data

[Number of staff employed on buses and coaches by year on StatsWales](#)

Local bus services: fares

Chart 6 shows how bus fares in Wales and Great Britain have changed since 1995. Figures used are in current prices (actual prices paid). Bus fares in Wales have increased at a very similar rate to Great Britain, though in recent years fares have increased slightly more in Great Britain than in Wales. Bus fares have consistently increased at a rate greater than inflation (as measured by CPIH^[2]). This is shown by the steeper trajectories of the fare increases compared with the shallower slope of the dotted line for CPIH. Since 1995, fares in Wales increased by 174%, fares in Great Britain increased by 185% and CPIH increased by 64%. In the latest year there was a 3.5% increase in Wales and a 2.6% increase in Great Britain, both higher than the inflation rate of 2.3%.

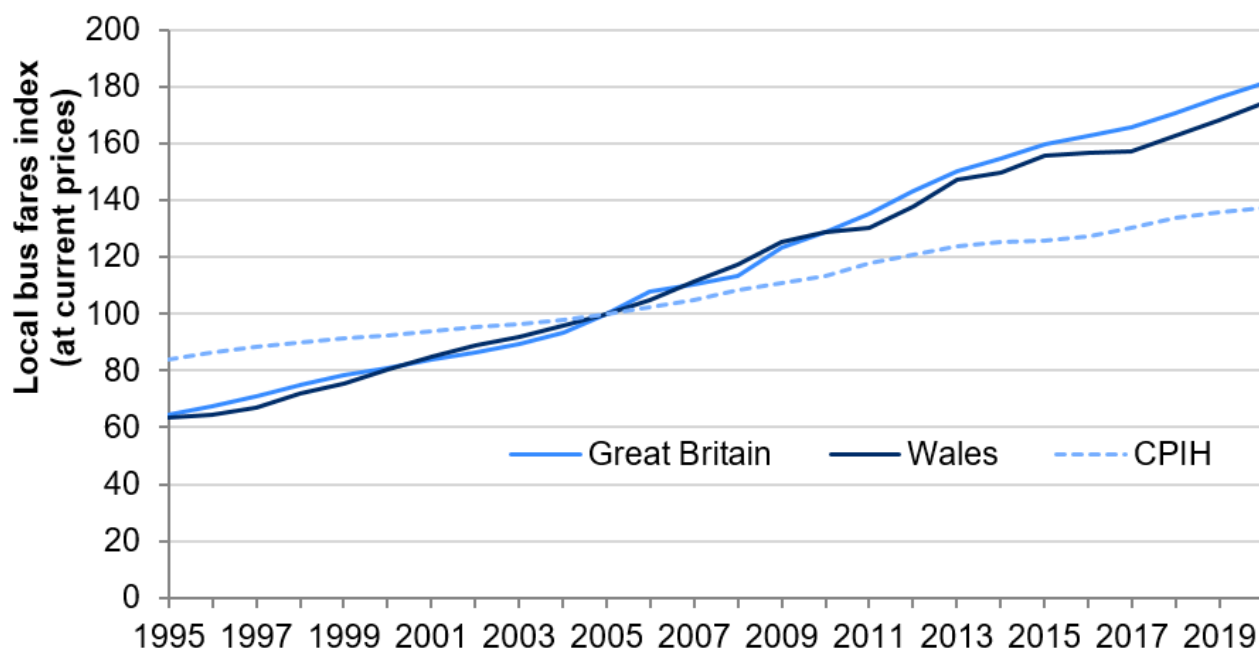
This document was downloaded from GOV.WALES and may not be the latest version.

Go to <https://www.gov.wales/public-service-vehicles-buses-and-taxis-april-2019-march-2020.html> for the latest version.

Get [information on copyright](#).

[2] Consumer prices index including owner occupiers' housing costs.

Chart 6: Local bus services fare indices for Wales and Great Britain, 1995 to 2020 (a)



Source: Welsh Government analysis of Department for Transport 'Fares Survey'
(a) Index as at 31 March. Index (2005 = 100).

[Fare Indices for local bus services in Wales and Great Britain by year on StatsWales](#)

Local bus services: journeys

Wales accounts for a small proportion of the local bus market in Great Britain, with just 2.0% of total passenger journeys in 2019-20. Wales has a 4.9% share of the population in Great Britain, meaning that bus journeys are relatively less common in Wales than across Great Britain as a whole.

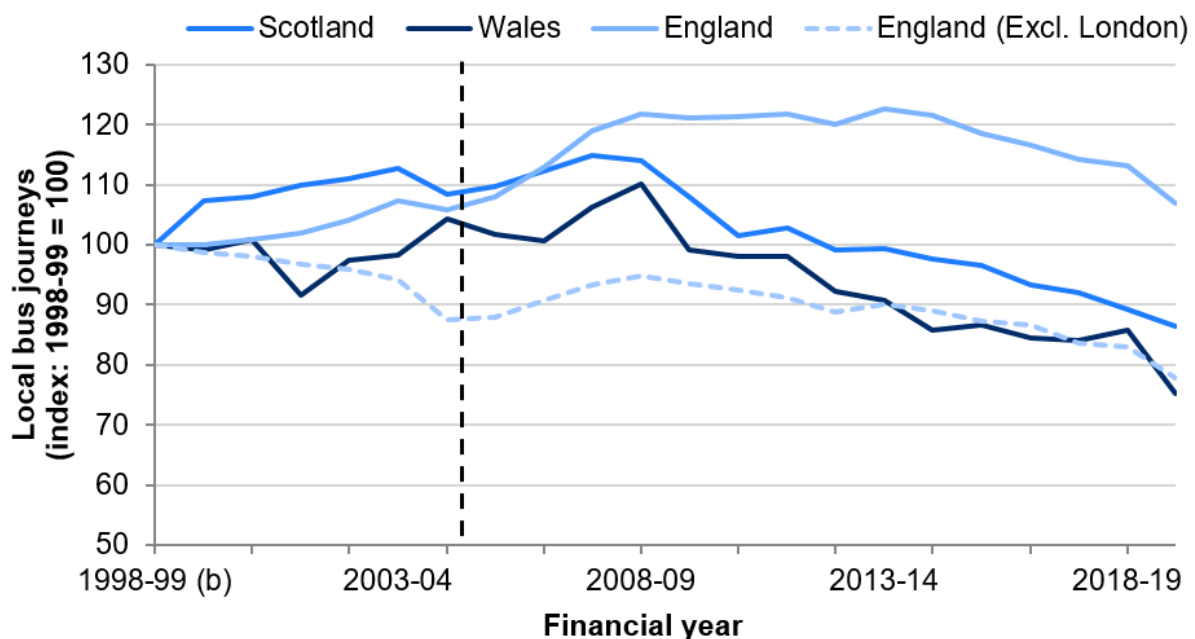
This document was downloaded from GOV.WALES and may not be the latest version.

Go to <https://www.gov.wales/public-service-vehicles-buses-and-taxis-april-2019-march-2020-html> for the latest version.

Get [information on copyright](#).

Chart 7 shows trends in bus travel in the countries of Great Britain since 1998-99. The trend in Wales was broadly similar to that seen in Scotland until 2018-19. The overall trend for England is different because of the distortive effect on London, where there were significant increases in bus journeys up to 2008-09.

Chart 7: Local bus journeys by Great Britain country, 1998-99 to 2019-20 (a) (b)



Source: Welsh Government analysis of Department for Transport 'Public Service Vehicle Survey'
 (a) There was a break in series in 2004-05. In order to provide this longer run comparison, the older data were linked onto the post 2004-05 data before indexing onto the 1998-99 database.
 (b) The year 1998-99 was chosen as the base year as that was the low-point in bus travel for Great Britain as a whole.

Local bus journeys index by UK country and London and by year on StatsWales

The number of passenger journeys per person has been decreasing across Great Britain since 2008-09. However, Wales recorded a 12.2% decrease in 2019-20 compared with the previous year. In Wales, the number of journeys per

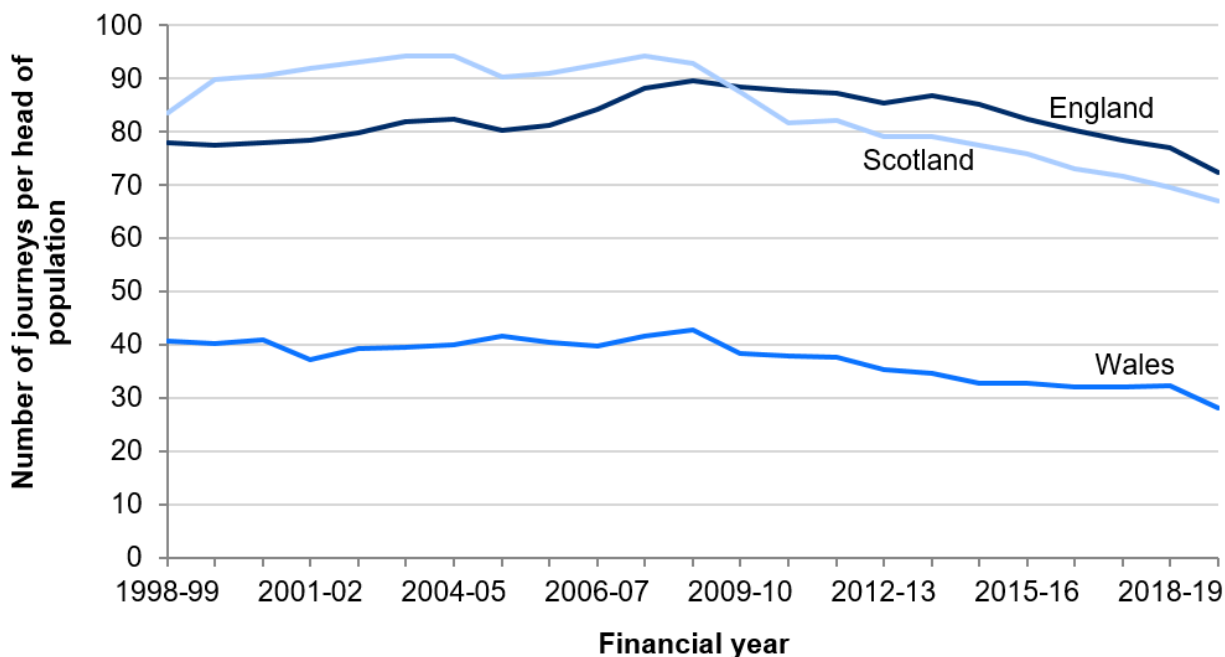
This document was downloaded from GOV.WALES and may not be the latest version.

Go to <https://www.gov.wales/public-service-vehicles-buses-and-taxis-april-2019-march-2020.html> for the latest version.

Get [information on copyright](#).

person is less than half of the rate in Scotland and England (chart 8). This rate has remained stable in Wales since 2014-15, whereas the rate has decreased in England and Scotland over the same period.

Chart 8: Passenger journeys per head on local bus services by country, 1998-99 to 2019-20 (a)



Source: Welsh Governemtn analysis of the Department for Transport 'Public Service Vehicle Survey'
 (a) The journey figures relate to all bus journeys, including non-residents. Population figures (residents only and are as at June).

Percentage change in passenger journeys on local bus services by country per head of population by year on StatsWales

Local bus services: distance covered

Total distance travelled in Wales by bus represents only 4.0% of all vehicle kilometres travelled in Great Britain for 2019-20 (chart 9).

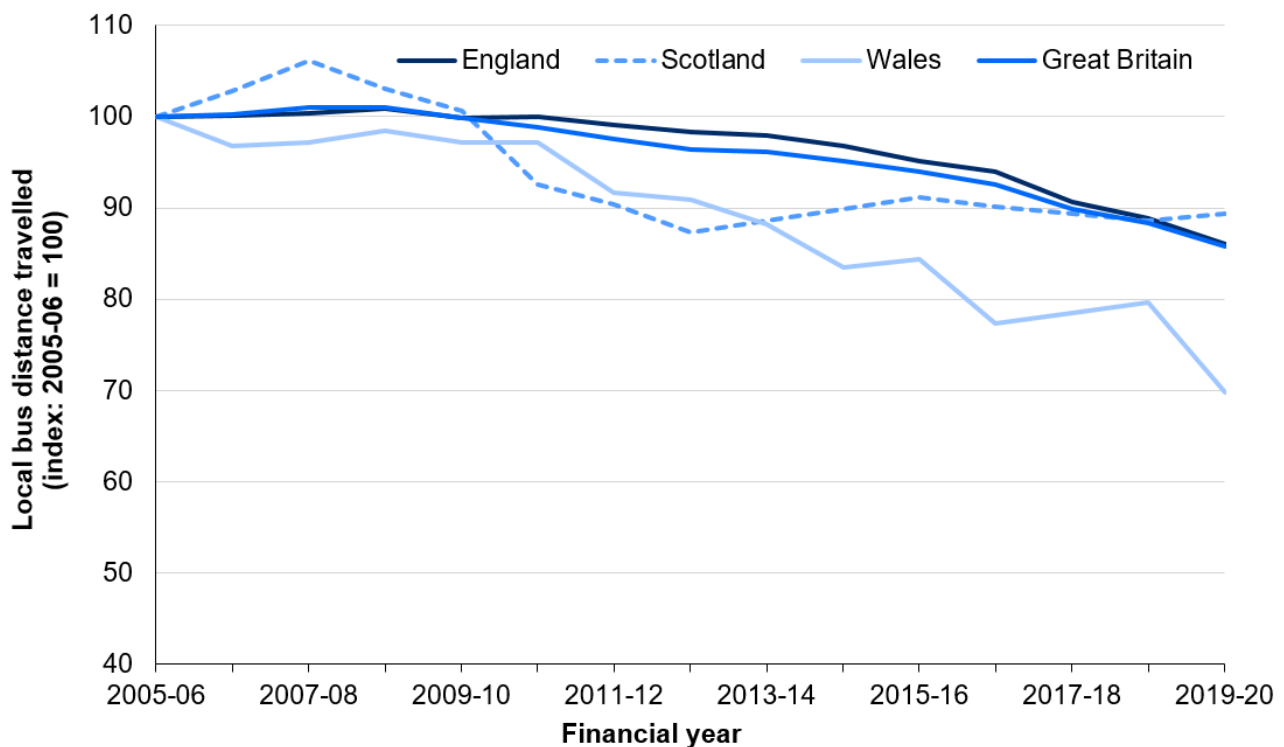
This document was downloaded from GOV.WALES and may not be the latest version.

Go to <https://www.gov.wales/public-service-vehicles-buses-and-taxis-april-2019-march-2020-html> for the latest version.

Get [information on copyright](#).

In 2019-20 the total distance travelled in Wales was 12.5% lower than in 2018-19, whilst England and Scotland saw a 3.1% and 0.9% decrease respectively. Over the long term there have been decreases in distances travelled in all three countries. Since 2005-06, the percentage decrease has been greatest in Wales (down 30.2%) compared with 13.9% in England and 10.6% in Scotland (chart 9).

Chart 9: Vehicle kilometres on local bus services by country, 2005-06 to 2019-20



Source: Welsh Government analysis of Department for Transport 'Public Service Vehicle Survey'

Vehicle kilometres on local bus services by UK country and year on StatsWales

This document was downloaded from GOV.WALES and may not be the latest version.

Go to <https://www.gov.wales/public-service-vehicles-buses-and-taxis-april-2019-march-2020-html> for the latest version.

Get [information on copyright](#).

Licensed taxis and private hire vehicles in Wales

People can apply for a taxi licence, a private hire vehicle (PHV) licence or a dual licence.

- A taxi licence enables the holder to pick up passengers on the streets or from designated taxi ranks.
- A private hire vehicle licence enables the holder to pick up passengers who have made a booking with a licensed private hire operator.
- A dual licence enables the holder to drive either a taxi or a private hire vehicle.

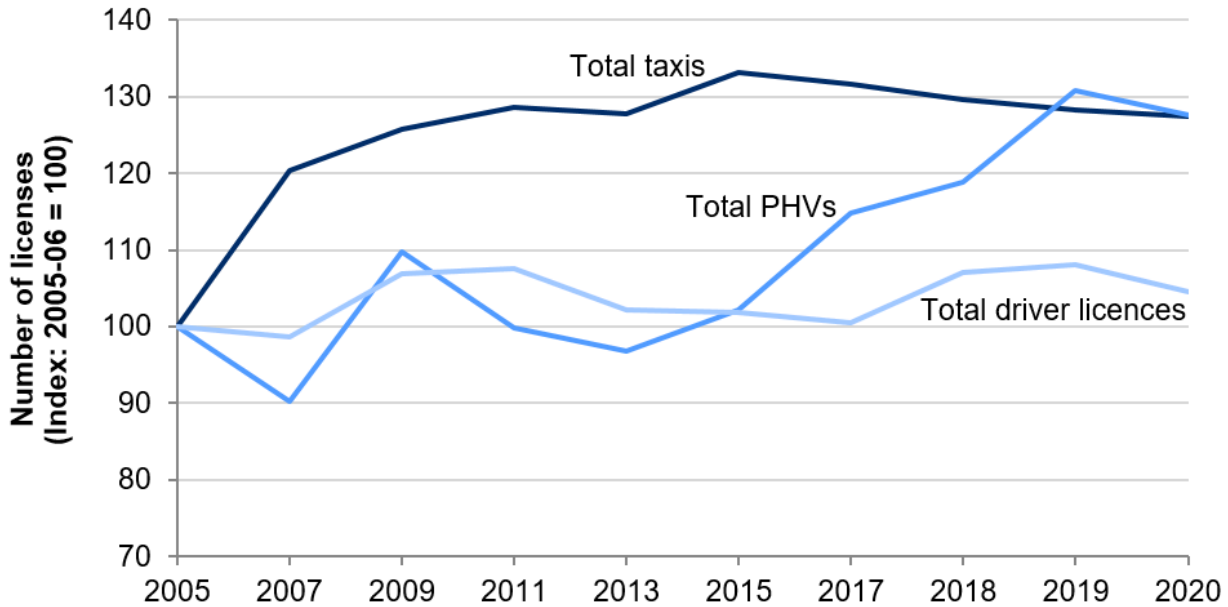
As of March 2020, there were 4,923 licensed taxis in Wales and 5,297 PHVs. In comparison, there were a total of 11,952 driver licences issued with 'Dual taxi/PHV driver licences' representing 82.3% of the total, and 'Taxi only licensed drivers' representing only 2.4%. Taxi licences have been stable for some time while PHVs have increased in recent years. The total number of driver licences held in Wales represents a 3.2% decrease on 2019 levels (chart 10).

This document was downloaded from GOV.WALES and may not be the latest version.

Go to <https://www.gov.wales/public-service-vehicles-buses-and-taxis-april-2019-march-2020.html> for the latest version.

Get [information on copyright](#).

Chart 10: Number of taxis, private hire vehicles (PHV) and driver licenses, 2005 to 2020 (a)



Source: Welsh Government analysis of the Department for Transport, taxi licensing authorities data (a) The figures in this chart are not National Statistics.

Licensed taxis and private hire vehicles by local authority and survey year on StatsWales

- There were 5,297 private hire fleet licensed vehicles in operation, with 1,831 drivers licensed and 818 operators licensed.
- There were 9,839 drivers licensed for both a taxi and private hire vehicle in Wales; with 34.7% of these from the Cardiff and Swansea local authorities.

The number of taxis and private hire vehicles licensed, by local authority, in Wales can be accessed from Statswales. Three of the local authorities (Wrexham and Merthyr Tydfil) issued no dual licences and instead licensed taxi drivers and private hire vehicle drivers separately as at 31 March 2020.

This document was downloaded from GOV.WALES and may not be the latest version.

Go to <https://www.gov.wales/public-service-vehicles-buses-and-taxis-april-2019-march-2020.html> for the latest version.

Get [information on copyright](#).

Quality information

Definitions

Coverage

The survey covers only those operators operating local bus services registered with the Traffic Commissioner.

Local bus service

Local services are scheduled stopping services registered with the Traffic Commissioner. A local service is defined as a bus service using Public Service Vehicles to carry passengers at separate fares over short distances. The route can be of any total length, as long as throughout its length passengers can get off within 24.15 kilometres (15 miles) (measured in a straight line) of the place where they were picked up. Each passenger must make a separate payment to the driver, conductor or agent in order to use the service. Excursions and tours need only be registered if separate fares are paid, the whole journey is within a 24.15 km (15 mile) radius of the starting point and they run one or more times a week for at least 6 weeks in a row. Schools and works services may be local bus services if the users pay a separate fare but do not need to be registered if someone other than the bus operator is responsible for arranging the journey, and the journey is not advertised beforehand to the general public, and all passengers travel to or from the same place, and passengers pay the same fare no matter how far they travel.

This document was downloaded from GOV.WALES and may not be the latest version.

Go to <https://www.gov.wales/public-service-vehicles-buses-and-taxis-april-2019-march-2020.html> for the latest version.

Get [information on copyright](#).

Passenger journeys

A count of the total number of boardings of each vehicle, so a trip which requires a change from one bus to another would be counted as two journeys in these figures. Figures do not include children under 5 years of age.

Vehicle kilometres

Distance (kilometres) run by local buses in service. This includes only 'live' (i.e. service) miles and not 'dead' running e.g. from depots to the start of a route.

Data source

Most of the information presented here is derived from annual returns made to the Department for Transport (DfT) by a sample of 700 holders of Public Service Vehicle operators' licences ('the PSV survey'). This survey provides information on passenger journeys, vehicle miles, passenger receipts and operating costs. Separate, smaller surveys managed by DfT collect information about fare changes, service reliability and quarterly patronage from the larger bus operators.

Full details of the data sources and methods used can be found in the [guidance on the GOV.UK website](#).

Relevance

DfT bus statistics represent the most comprehensive single source of official data on the bus industry in Great Britain, and provide data which is used in monitoring trends, developing policy and providing accountability for the subsidy

This document was downloaded from GOV.WALES and may not be the latest version.

Go to <https://www.gov.wales/public-service-vehicles-buses-and-taxis-april-2019-march-2020-html> for the latest version.

Get [information on copyright](#).

provided to the industry at a high level.

Accuracy

The PSV survey uses imputation techniques to derive key figures for operators who were either not selected in the sample for that year, or who did not respond. On occasion, imputations for earlier years can be improved using directly-reported data for later years. Minor revisions to back-data can occur as a result, although trends are rarely affected substantively.

For the key indicators (passenger journeys and vehicle miles operated) the data provided by operator's cover around, or above, 90% of the total figure, with the remainder imputed. Comparison with other sources suggests that, at aggregate (Great Britain) level, the statistics are likely to provide a reasonably robust measure of levels and broad trends.

However, figures representing smaller groups of operators and single year on year changes should be treated with caution as these are more susceptible to measurement errors (for example, an inaccurate return by an operator, or a change in an operator's method of producing the figures required) which are more likely to even out at the national level. For this reason, regional, and particularly local authority, level figures should be interpreted with caution.

Timeliness and punctuality

DfT collected data from operators during the summer 2020 for publication in December 2020.

This document was downloaded from GOV.WALES and may not be the latest version.

Go to <https://www.gov.wales/public-service-vehicles-buses-and-taxis-april-2019-march-2020-html> for the latest version.

Get [information on copyright](#).

Accessibility and clarity

This Statistical Bulletin is pre-announced and then published on the [Statistics and Research website](#) and is accompanied by [StatsWales reports](#).

Comparability and coherence

Many of these statistics have been collected on a broadly comparable basis from operators for many years. However, following revisions to the methodology used to compile the published figures, 2004-05 is the earliest year for which figures are comparable on exactly the same basis.

Related publications

The [DfT produces statistics on the local bus sector](#) in Great Britain. It presents information on:

- passenger journeys
- vehicle miles
- levels of revenue
- costs and government support
- the vehicle fleet
- staff employed
- other indicators including punctuality

[Transport Scotland produces an annual publication titled 'Bus and Coach Travel'](#) which brings together a range of bus and coach data to provide a more comprehensive and complete understanding of travel trends and behaviours across these modes. Data presented include DfT Scottish bus operator data, Transport Scotland concessionary bus fare data and further analysis of bus-

This document was downloaded from GOV.WALES and may not be the latest version.

Go to <https://www.gov.wales/public-service-vehicles-buses-and-taxis-april-2019-march-2020.html> for the latest version.

Get [information on copyright](#).

related information collected by the Scottish Household Survey (SHS).

The annual publication '**Northern Ireland Transport Statistics 2018-2019**' produced by **Department for Infrastructure in Northern Ireland** contains a chapter on public transport.

National Statistics status

The **United Kingdom Statistics Authority** has designated these statistics as National Statistics, in accordance with the Statistics and Registration Service Act 2007 and signifying compliance with the **Code of Practice for Statistics**.

National Statistics status means that official statistics meet the highest standards of trustworthiness, quality and public value.

All official statistics should comply with all aspects of the Code of Practice for Statistics. They are awarded National Statistics status following an assessment by the UK Statistics Authority's regulatory arm. The Authority considers whether the statistics meet the highest standards of Code compliance, including the value they add to public decisions and debate. The designation of these statistics as National Statistics was confirmed in February 2013 following a full assessment against the Code of Practice.

Since the latest review by the Office for Statistics Regulation, we have continued to comply with the **Code of Practice for Official Statistics**, and have made the following improvements:

- Eliminated un-necessary tables from bulletin as they are freely available on StatsWales
- Improved visuals and commentary of long terms trends for all public service vehicles

This document was downloaded from GOV.WALES and may not be the latest version.

Go to <https://www.gov.wales/public-service-vehicles-buses-and-taxis-april-2019-march-2020.html> for the latest version.

Get [information on copyright](#).

It is Welsh Government's responsibility to maintain compliance with the standards expected of National Statistics. If we become concerned about whether these statistics are still meeting the appropriate standards, we will discuss any concerns with the Authority promptly.

Well-being of Future Generations Act

The Well-being of Future Generations Act 2015 is about improving the social, economic, environmental and cultural wellbeing of Wales. The Act puts in place seven wellbeing goals for Wales. These are for a more equal, prosperous, resilient, healthier and globally responsible Wales, with cohesive communities and a vibrant culture and thriving Welsh language. Under section (10)(1) of the Act, the Welsh Ministers must (a) publish indicators ("national indicators") that must be applied for the purpose of measuring progress towards the achievement of the wellbeing goals, and (b) lay a copy of the national indicators before Senedd Cymru. Under section 10(8) of the Well-being of Future Generations Act, where the Welsh Ministers revise the national indicators, they must as soon as reasonably practicable (a) publish the indicators as revised and (b) lay a copy of them before the Senedd. These national indicators were laid before the Senedd in 2021. The indicators laid on 14 December 2021 replace the set laid on 16 March 2016.

Information on the indicators, along with narratives for each of the well-being goals and associated technical information is available in the [Wellbeing of Wales report](#).

Further information on the [Well-being of Future Generations \(Wales\) Act 2015](#).

The statistics included in this release could also provide supporting narrative to the national indicators and be used by public services boards in relation to their local wellbeing assessments and local wellbeing plans.

This document was downloaded from GOV.WALES and may not be the latest version.

Go to <https://www.gov.wales/public-service-vehicles-buses-and-taxis-april-2019-march-2020-html> for the latest version.

Get [information on copyright](#).

Contact details

Statistician: James Khonje
Telephone: 0300 021 0250
Email: stats.transport@gov.wales

Media: 0300 025 8099



SB 11/2020

This document may not be fully accessible.

For more information refer to our [accessibility statement](#).

This document was downloaded from GOV.WALES and may not be the latest version.

Go to <https://www.gov.wales/public-service-vehicles-buses-and-taxis-april-2019-march-2020-html> for the latest version.

Get [information on copyright](#).