

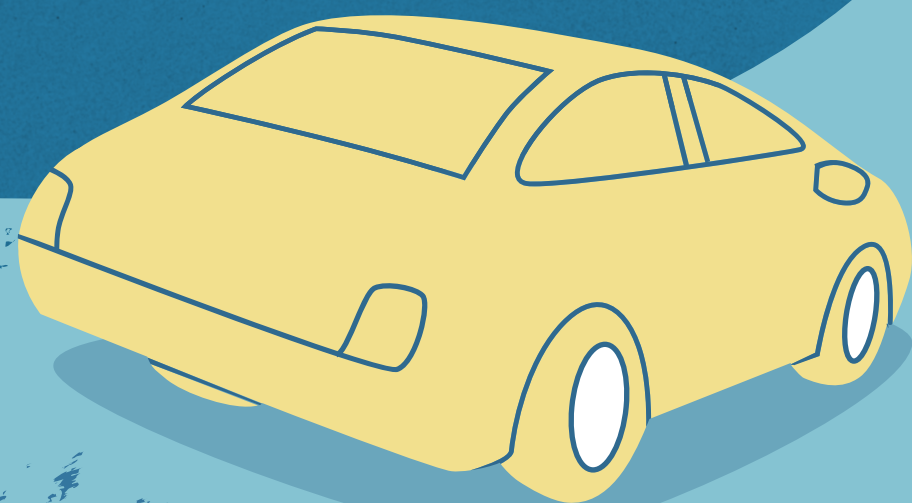


Llywodraeth Cymru
Welsh Government

www.cymru.gov.uk

Public Local Inquiry into the M4 Corridor around Newport Project

What you need to know



What is an Inquiry?

An Inquiry into a road scheme is a review by an independent Inspector before a final decision is made whether to build it.

Why do we have an Inquiry?

An Inquiry lets those for and against a road scheme have their say. It considers all of the important issues including:

- The need for the Scheme.
- The proposed land take.
- Potential social and environmental impacts (across a wide range of issues i.e. ecology, archaeology, noise, visual) and mitigation proposed.
- The cost and business case.
- Written responses from both objectors and supporters.
- Suggested alternatives.

Who is the Inspector?

- The Inspector is independent and makes sure the Inquiry is open, fair and impartial.
- They consider all the evidence and make recommendations to the Welsh Ministers.
- They listen to those for and against the scheme and consider the points they make.
- They consider alternatives suggested.

Who is the Programming Officer?

The Programming Officer organises the Inquiry and is the first point of contact for anyone who wants to present their views, or has any questions about the inquiry. You can contact her by telephone or email.
Telephone: 01403 217799 Mobile: 07483 133975
Email: JoannaVincent@personaassociates.co.uk



How can I get involved?

- Watch the Inquiry, it's open to the public.
- Speak at the Inquiry so your views are heard, recorded and taken into account.
- You can suggest an alternative route and support or object to other alternatives once they are published.
- You can attend Inspector's site visits.

What Happens After the Inquiry?

The Inspector writes a report with findings and recommendations. The Welsh Ministers then decide whether the scheme should go ahead. The Welsh Ministers' decision, together with the Inspector's report, will be issued to everyone who commented on the proposals.

Inquiries are conducted in accordance with 'The Highways (Inquiries Procedure) Rules 1994' and 'The Compulsory Purchase (Inquiries Procedure) (Wales) Rules 2010'.

More guidance on Inquiries can be found in a brochure called 'Public Inquiries into road proposals, What you need to know' available from the Welsh Government website gov.wales or from the Programming Officer.

July. Typeset in 13pt.
© Crown copyright 2016

