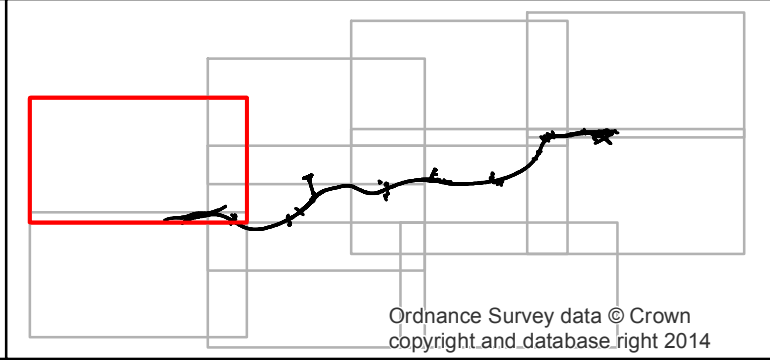



Legend

- Proposed alignment of new section of motorway
- ZTV up to 5km for Junction 29 Castleton to South Wales to London Mainline (new Duffryn Railway)
- ZTV up to 3km for South Wales to London Mainline (new Duffryn Railway Underbridge) across Wentlooge Levels to south of
- ZTV up to 5km for Docks Way Landfill site (new Docks Way Junction), south of Newport Docks across River Usk to east of Uskmouth Railway line
- ZTV up to 3km for East of Uskmouth Railway line across Caldicot Levels to Steelworks Access Road, south of Bareland
- ZTV up to 5km for Steelworks Access Road, south of Bareland Street to Junction 23

Ordnance Survey data © Crown copyright and database right 2014





Llywodraeth Cymru
Welsh Government

Environmental Statement

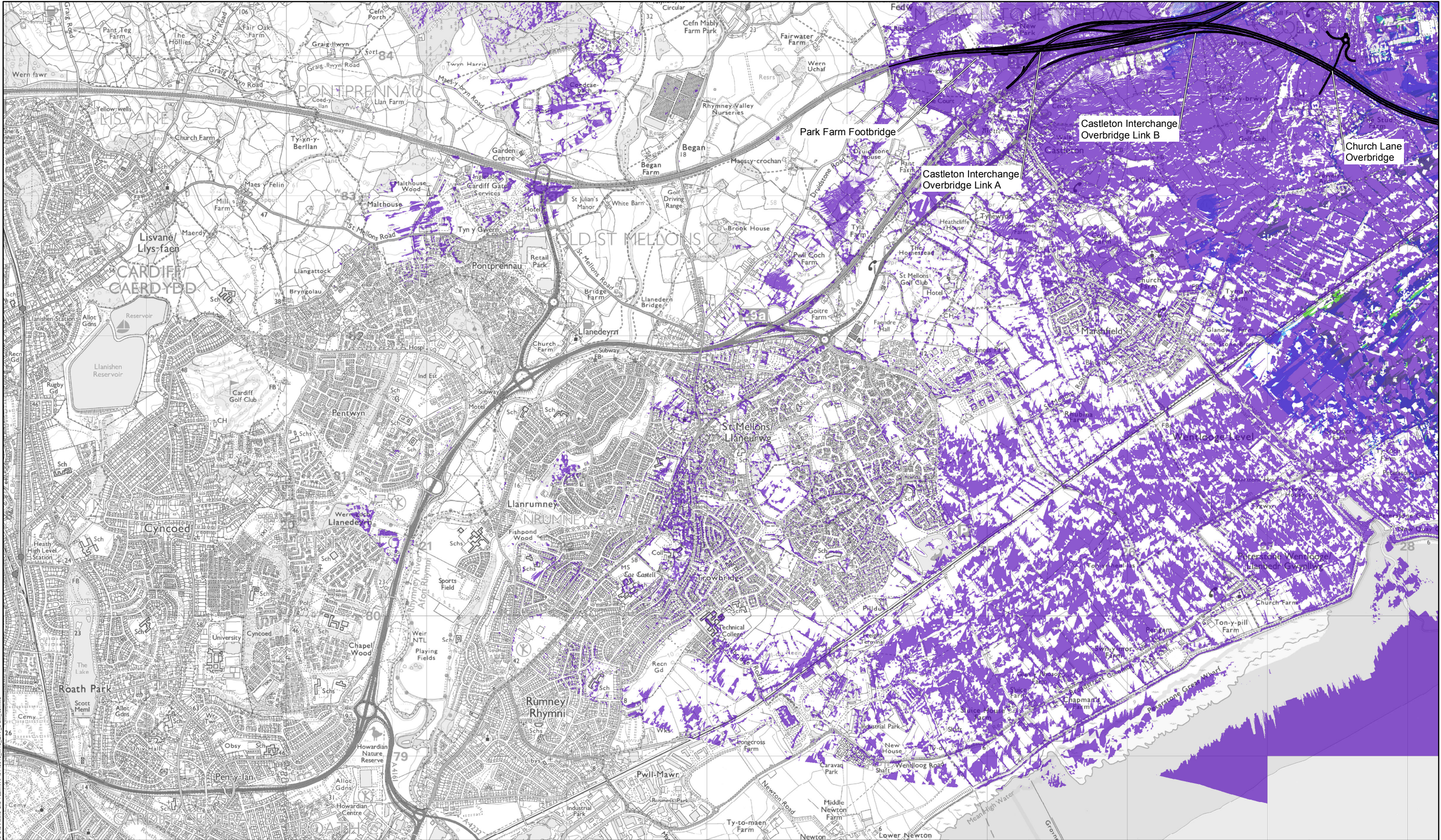
New Section of Motorway
Combined Zones of Theoretical Visibility
Sheet 1 of 10

Figure: SR9.2
Date: December 2016
Drawn: SJD
Scale: A3 @ 1:25,000
Refer to December ES Supplement

Revision: 02
Status: At Issue
Checked: NJR

dwg ref:

© Crown Copyright and database right 2016. Ordnance Survey 100021874. Welsh Government.
© Hawlfraint a hawliau cronfa ddata'r Goron 2016. Rhif Trwydded yr Arolwg Ordnans 100021874.



Legend

Proposed alignment of new section of motorway

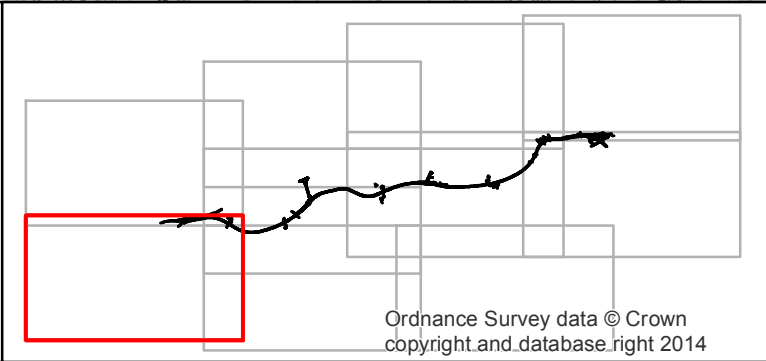
ZTV up to 5km for Junction 29 Castleton to South Wales to London Mainline (new Duffryn Railway)


ZTV up to 3km for South Wales to London Mainline (new Duffryn Railway Underbridge) across Wentlooge Levels to south of

ZTV up to 5km for Docks Way Landfill site (new Docks Way Junction), south of Newport Docks across River Usk to east of Uskmouth Railway line

ZTV up to 3km for East of Uskmouth Railway line across Caldicot Levels to Steelworks Access Road, south of Bareland

ZTV up to 5km for Steelworks Access Road, south of Bareland Street to Junction 23





Llywodraeth Cymru
Welsh Government

Environmental Statement

New Section of Motorway
Combined Zones of Theoretical Visibility
Sheet 2 of 10

Figure: SR9.2

Date: December 2016

Drawn: SJD

Scale: A3 @ 1:25,000

Refer to December ES Supplement

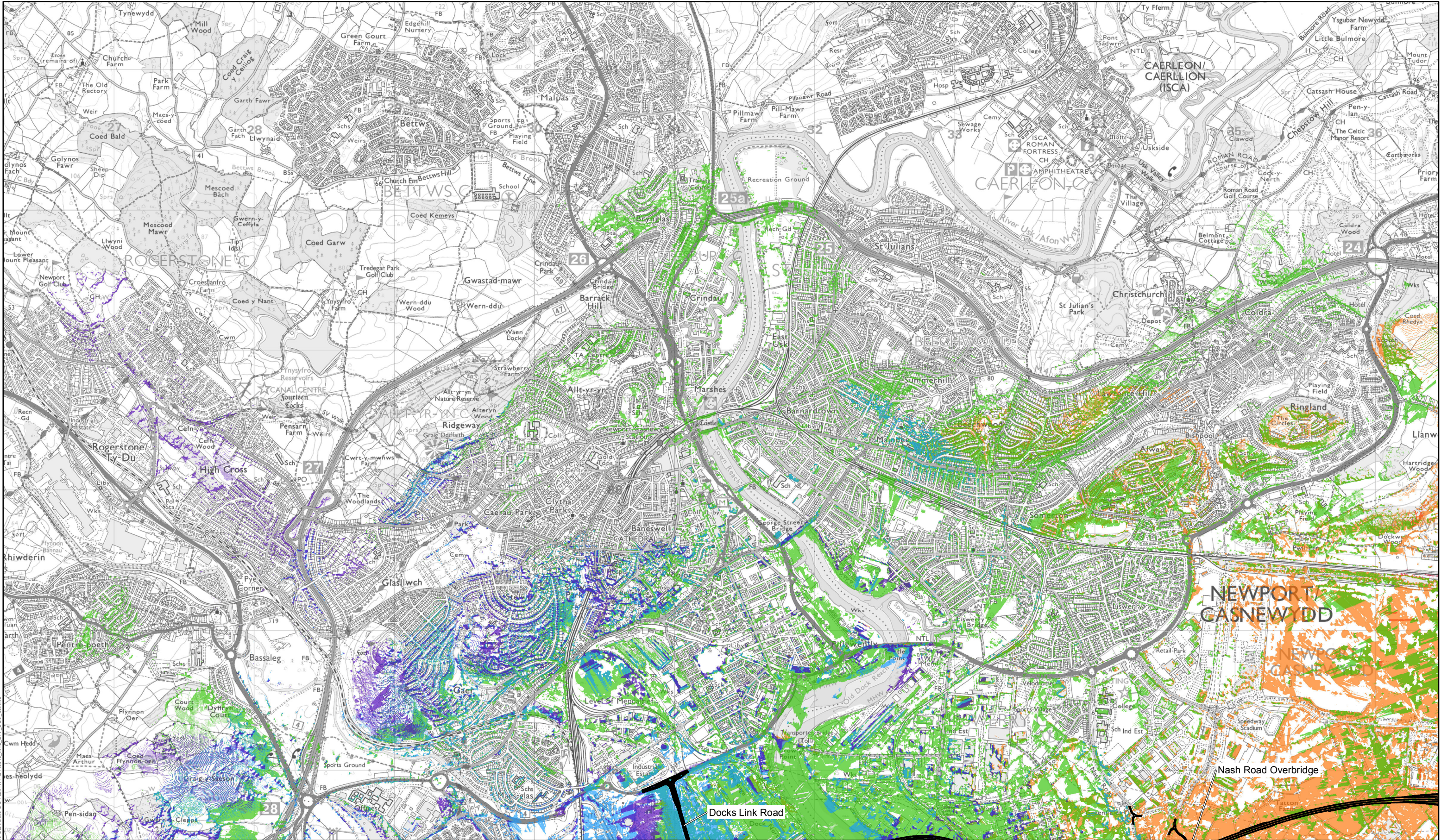
Revision: 02

Status: At Issue

Checked: NJR

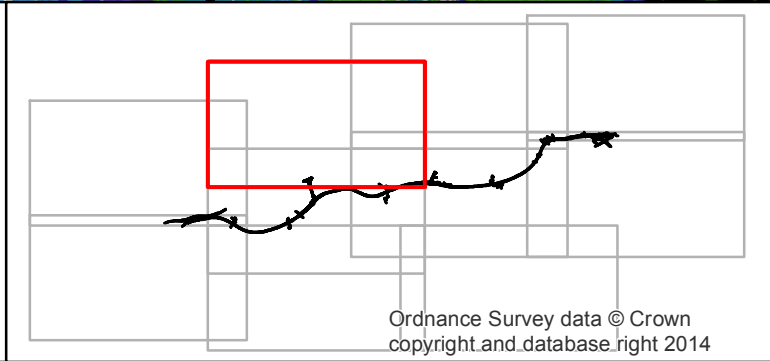
© Crown Copyright and database right 2016. Ordnance Survey 100021874. Welsh Government.
© Hawffraint a hawliau cronfa ddata'r Goron 2016. Rhif Trwydded yr Arolwg Ordnans 100021874.


dwg ref:



Legend

- Proposed alignment of new section of motorway
- ZTV up to 5km for Junction 29 Castleton to South Wales to London Mainline (new Duffryn Railway)
- ZTV up to 3km for South Wales to London Mainline (new Duffryn Railway Underbridge) across Wentlooge Levels to south of
- ZTV up to 5km for Docks Way Landfill site (new Docks Way Junction), south of Newport Docks across River Usk to east of Uskmouth Railway line
- ZTV up to 3km for East of Uskmouth Railway line across Caldicot Levels to Steelworks Access Road, south of Bareland
- ZTV up to 5km for Steelworks Access Road, south of Bareland Street to Junction 23

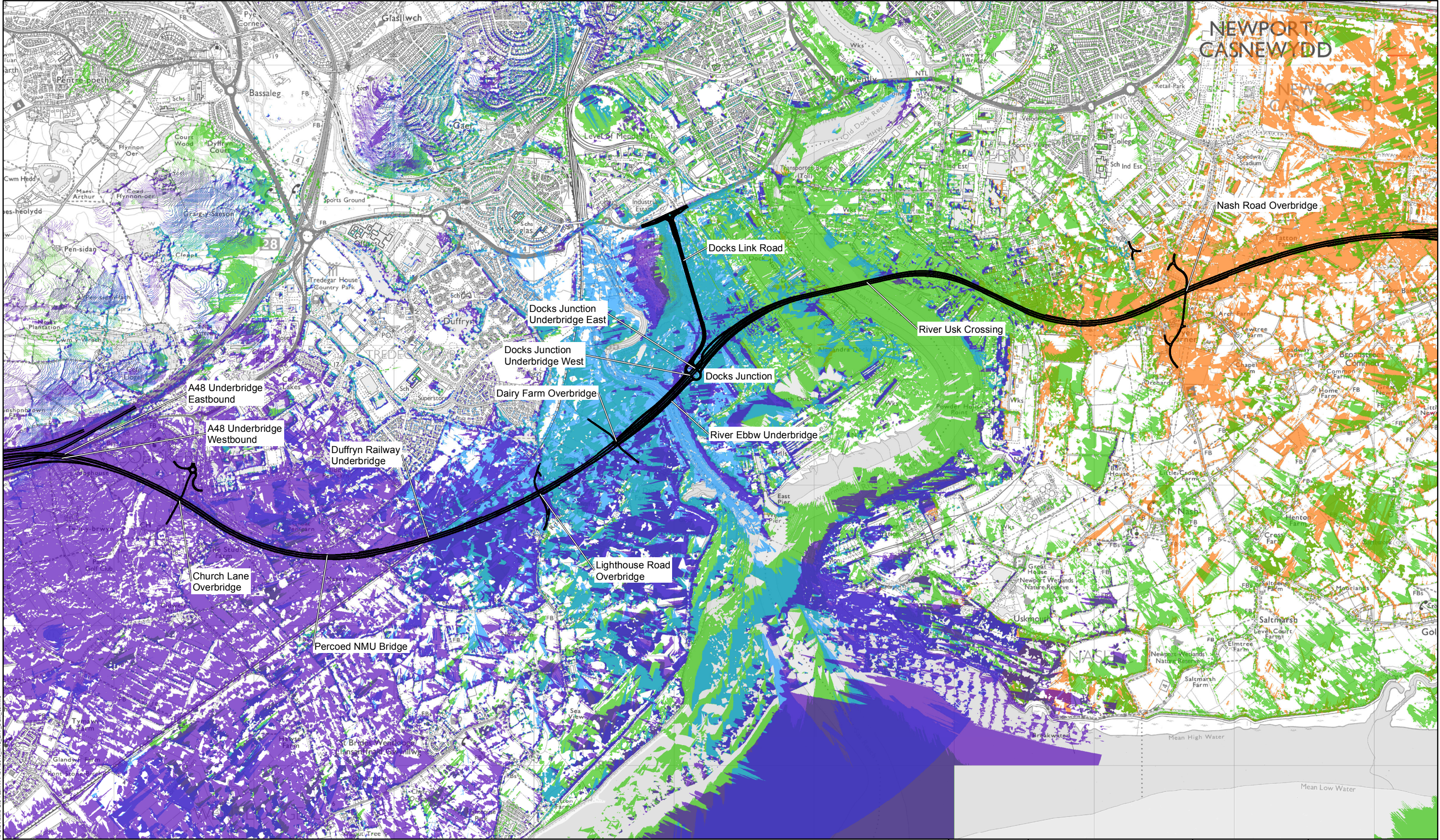



Llywodraeth Cymru
Welsh Government

Environmental Statement

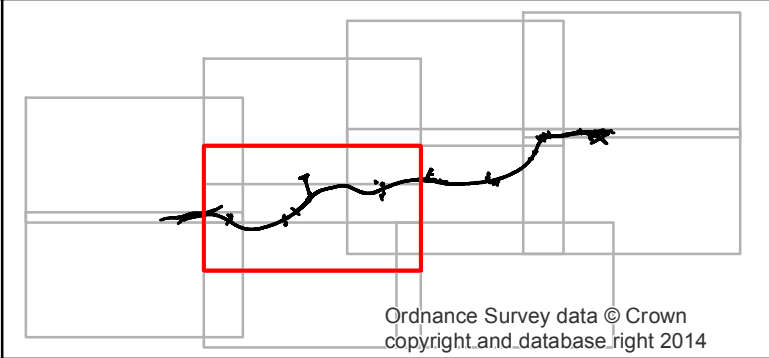
**New Section of Motorway
Combined Zones of Theoretical Visibility
Sheet 3 of 10**


Figure: SR9.2	Revision: 02
Date: December 2016	Status: At Issue
Drawn: SJD	Checked: NJR
Scale: A3 @ 1:25,000	
Refer to December ES Supplement	
© Crown Copyright and database right 2016. Ordnance Survey 100021874. Welsh Government. © Hawffaint a hawliau cronfa ddata'r Goron 2016. Rhif Trwydded yr Arolwg Ordnans 100021874.	
dwg ref:	



Legend

- Proposed alignment of new section of motorway
- ZTV up to 5km for Junction 29 Castleton to South Wales to London Mainline (new Duffryn Railway)
- ZTV up to 3km for South Wales to London Mainline (new Duffryn Railway Underbridge) across Wentlooge Levels to south of
- ZTV up to 5km for Docks Way Landfill site (new Docks Way Junction), south of Newport Docks across River Usk to east of Uskmouth Railway line
- ZTV up to 3km for East of Uskmouth Railway line across Caldicot Levels to Steelworks Access Road, south of Bareland
- ZTV up to 5km for Steelworks Access Road, south of Bareland Street to Junction 23



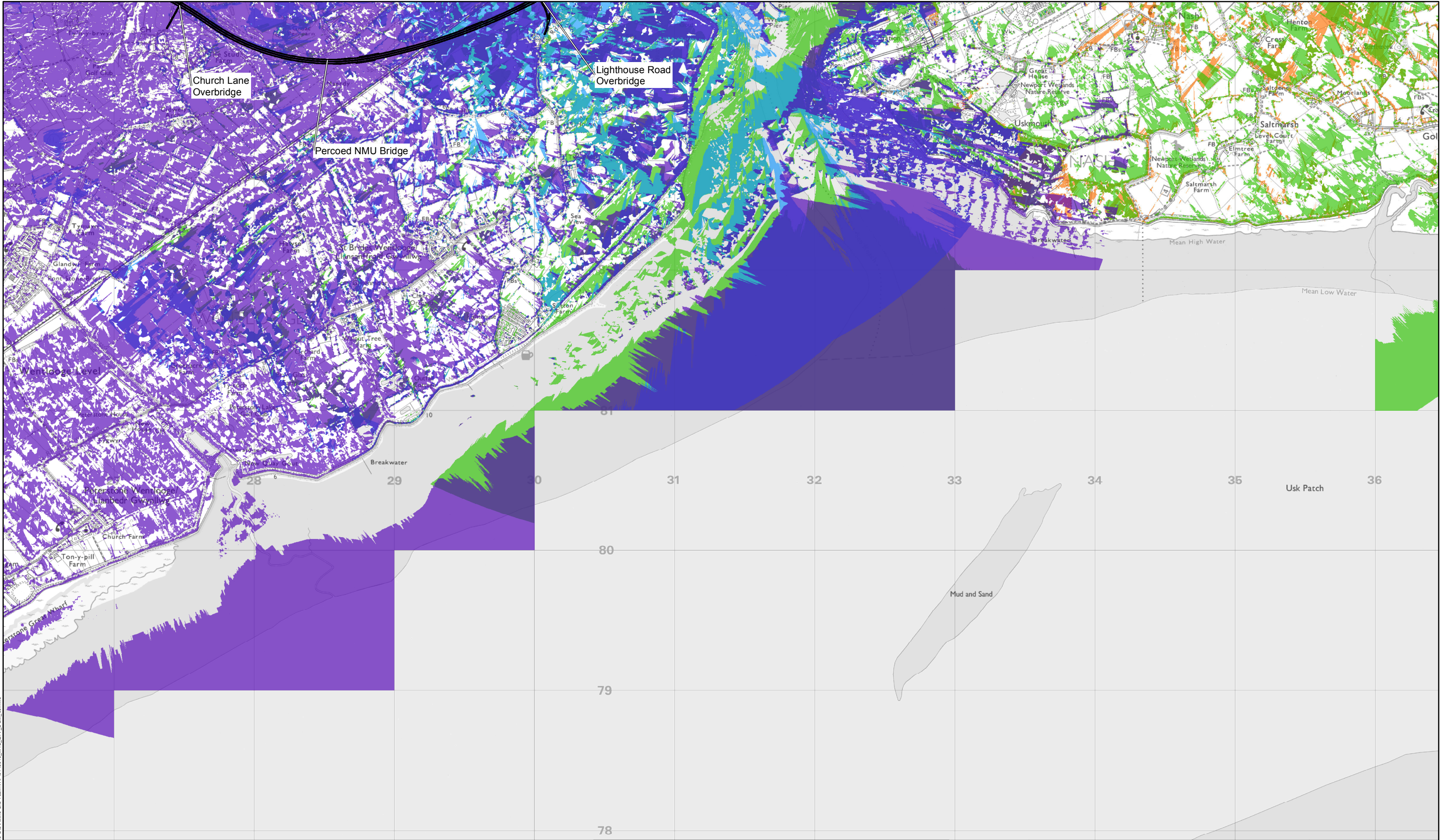


Llywodraeth Cymru
Welsh Government

Environmental Statement

New Section of Motorway
Combined Zones of Theoretical Visibility
Sheet 4 of 10

Figure: SR9.2	Revision: 02
Date: December 2016	Status: At Issue
Drawn: SJD	Checked: NJR
Scale: A3 @ 1:25,000	
Refer to December ES Supplement	
© Crown Copyright and database right 2016. Ordnance Survey 100021874. Welsh Government. © Hawlfraint a hawliau cronfa ddata'r Goron 2016. Rhif Trwydded yr Arolwg Ordnans 100021874.	
dwg ref:	



Legend

Proposed alignment of new section of motorway

ZTV up to 5km for Junction 29 Castleton to South Wales to London Mainline (new Duffryn Railway)

ZTV up to 3km for South Wales to London Mainline (new Duffryn Railway Underbridge) across Wentlooge Levels to south of

ZTV up to 5km for Docks Way Landfill site (new Docks Way Junction), south of Newport Docks across River Usk to east of Uskmouth Railway line

ZTV up to 3km for East of Uskmouth Railway line across Caldicot Levels to Steelworks Access Road, south of Bareland

ZTV up to 5km for Steelworks Access Road, south of Bareland Street to Junction 23

Llywodraeth Cymru
Welsh Government

Environmental Statement

New Section of Motorway
Combined Zones of Theoretical Visibility
Sheet 5 of 10

Figure: SR9.2

Date: December 2016

Drawn: SJD

Scale: A3 @ 1:25,000

Refer to December ES Supplement

© Crown Copyright and database right 2016. Ordnance Survey 100021874. Welsh Government.
© Hawlfraint a hawliau cronfa ddata'r Goron 2016. Rhif Trwydded yr Arolwg Ordnans 100021874.

dwg ref:

Revision: 02

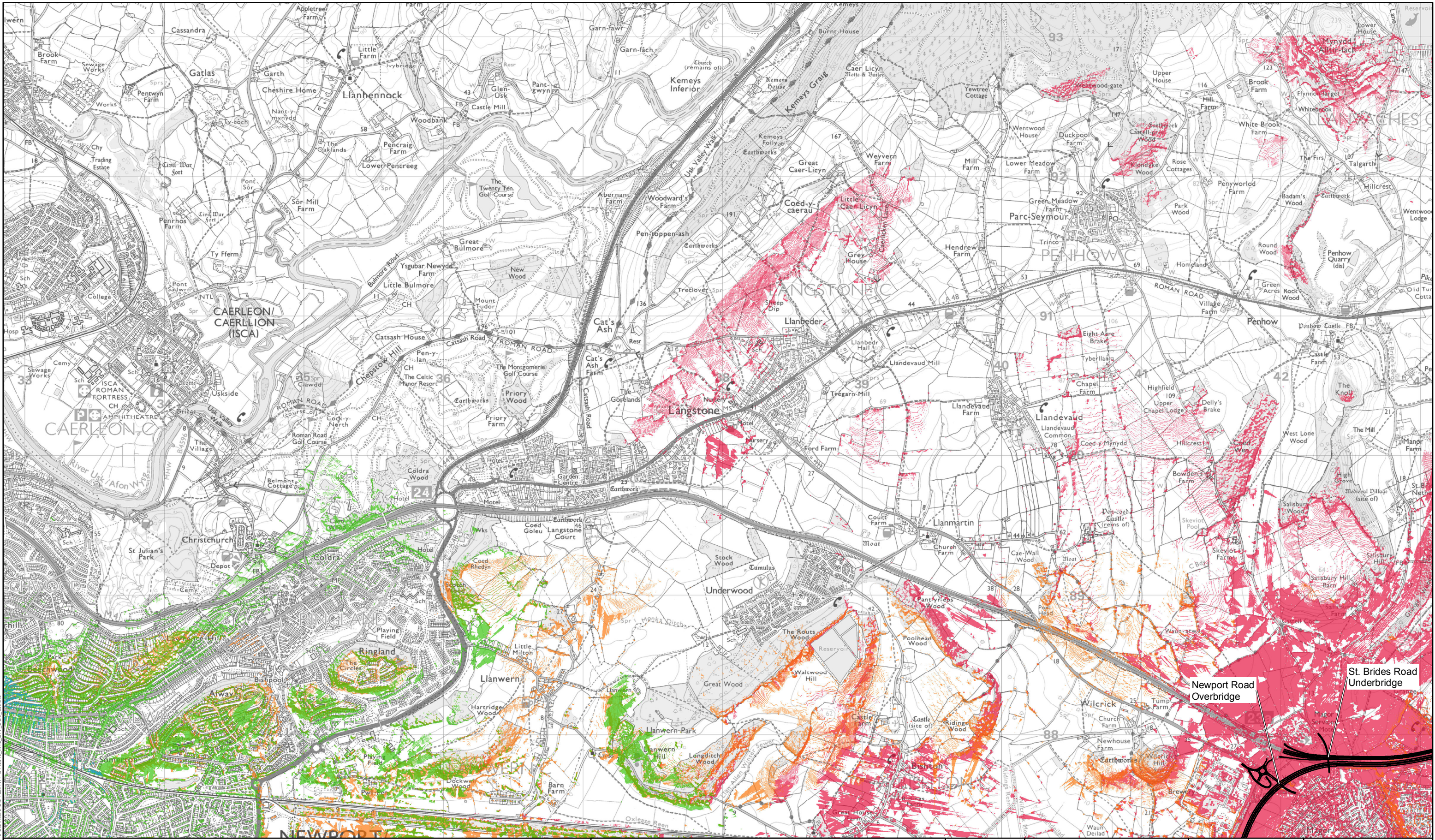
Status: At Issue

Checked: NJR

0 0.5 1 Kilometres

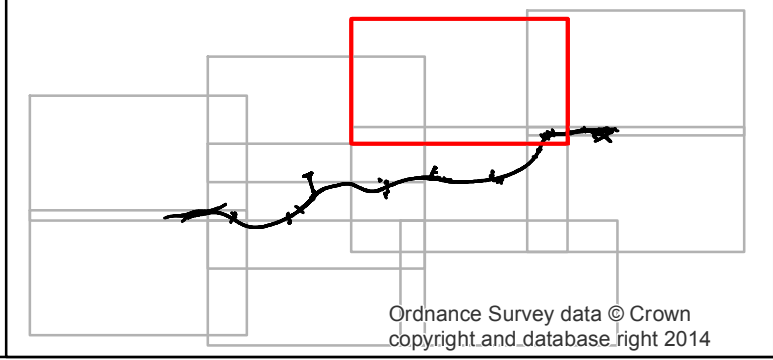
N


P:\GBSS\Locally Managed\5139402 M4 CAN400 Technical Information\19 GIS\Atkins GIS Team\WP5148016_M4C_ZTV_COM_03.mxd



Legend

- Proposed alignment of new section of motorway
- ZTV up to 5km for Junction 29 Castleton to South Wales to London Mainline (new Duffryn Railway)
- ZTV up to 3km for South Wales to London Mainline (new Duffryn Railway Underbridge) across Wentlooge Levels to south of
- ZTV up to 5km for Docks Way Landfill site (new Docks Way Junction), south of Newport Docks across River Usk to east of Uskmouth Railway line
- ZTV up to 3km for East of Uskmouth Railway line across Caldicot Levels to Steelworks Access Road, south of Bareland
- ZTV up to 5km for Steelworks Access Road, south of Bareland Street to Junction 23

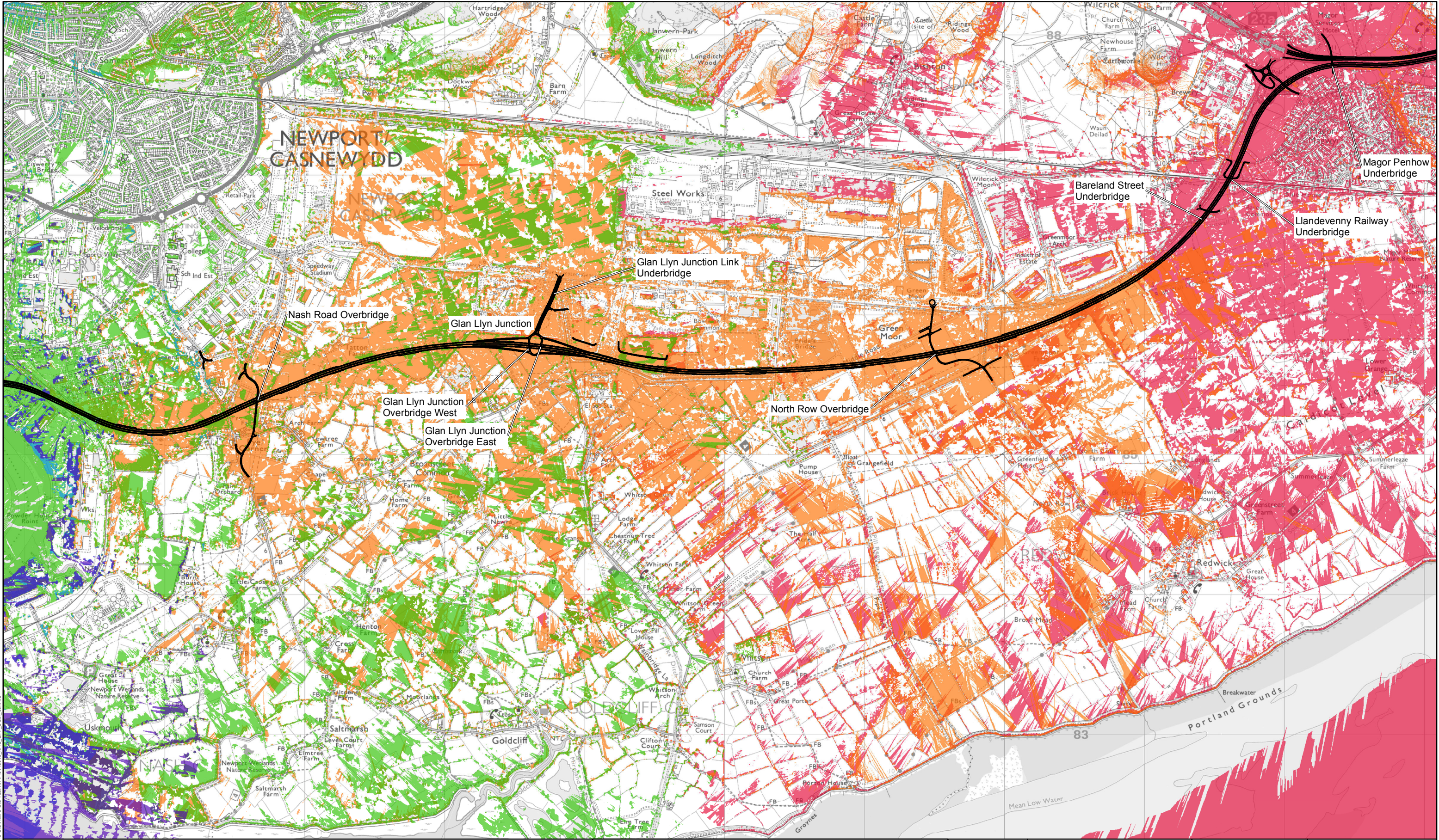



Llywodraeth Cymru
Welsh Government

Environmental Statement

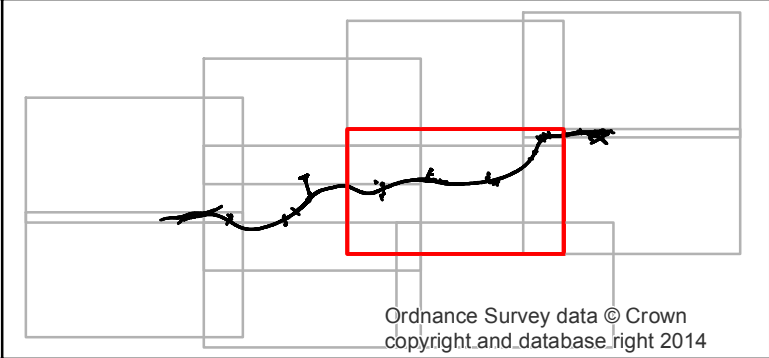
**New Section of Motorway
Combined Zones of Theoretical Visibility
Sheet 6 of 10**


Figure: SR9.2	Revision: 02
Date: December 2016	Status: At Issue
Drawn: SJD	Checked: NJR
Scale: A3 @ 1:25,000	
Refer to December ES Supplement	
© Crown Copyright and database right 2016. Ordnance Survey 100021874. Welsh Government. © Hawffaint a hawlfraint ddata'r Goron 2016. Rhif Trwydded yr Arolwg Ordnans 100021874.	
dwg ref:	



Legend

- Proposed alignment of new section of motorway
- ZTV up to 5km for Junction 29 Castleton to South Wales to London Mainline (new Duffryn Railway)
- ZTV up to 3km for South Wales to London Mainline (new Duffryn Railway Underbridge) across Wentlooge Levels to south of
- ZTV up to 5km for Docks Way Landfill site (new Docks Way Junction), south of Newport Docks across River Usk to east of Uskmouth Railway line
- ZTV up to 3km for East of Uskmouth Railway line across Caldicot Levels to Steelworks Access Road, south of Bareland
- ZTV up to 5km for Steelworks Access Road, south of Bareland Street to Junction 23



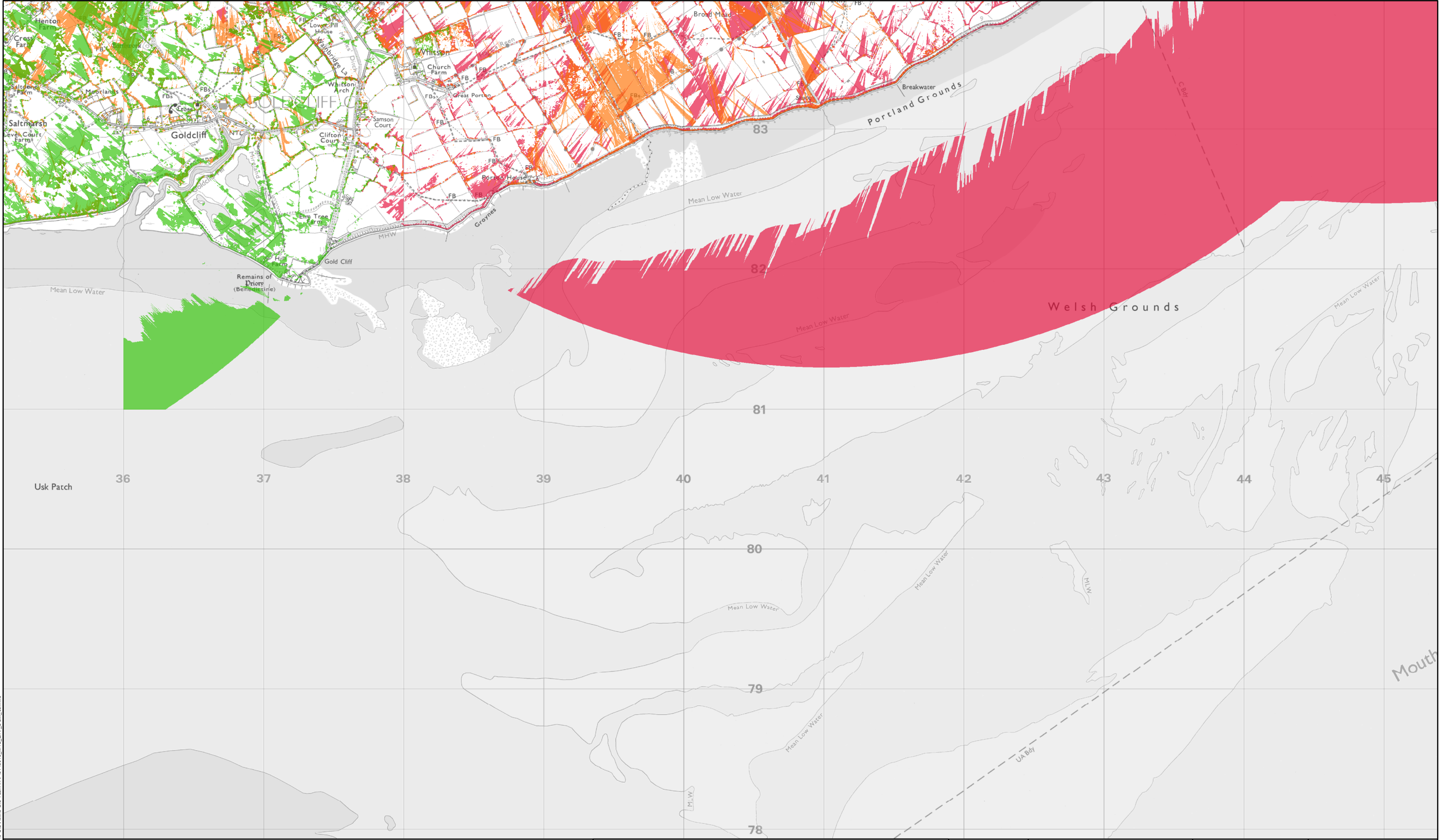


Llywodraeth Cymru
Welsh Government

Environmental Statement

New Section of Motorway
Combined Zones of Theoretical Visibility
Sheet 7 of 10

Figure: SR9.2	Revision: 02
Date: December 2016	Status: At Issue
Drawn: SJD	Checked: NJR
Scale: A3 @ 1:25,000	
Refer to December ES Supplement	
© Crown Copyright and database right 2016. Ordnance Survey 100021874. Welsh Government. © Hawffraint a hawliau cronfa ddata'r Goron 2016. Rhif Trwydded yr Arolwg Ordnans 100021874.	
dwg ref:	



Legend

- Proposed alignment of new section of motorway
- ZTV up to 5km for Junction 29 Castleton to South Wales to London Mainline (new Duffryn Railway)
- ZTV up to 3km for South Wales to London Mainline (new Duffryn Railway Underbridge) across Wentlooge Levels to south of
- ZTV up to 5km for Docks Way Landfill site (new Docks Way Junction), south of Newport Docks across River Usk to east of Uskmouth Railway line
- ZTV up to 3km for East of Uskmouth Railway line across Caldicot Levels to Steelworks Access Road, south of Bareland
- ZTV up to 5km for Steelworks Access Road, south of Bareland Street to Junction 23

Ordnance Survey data © Crown copyright and database right 2014

Llywodraeth Cymru
Welsh Government

Environmental Statement

New Section of Motorway
Combined Zones of Theoretical Visibility
Sheet 8 of 10

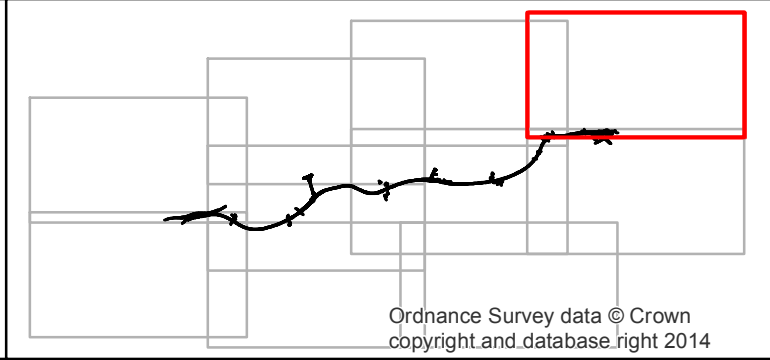
Figure: SR9.2	Revision: 02
Date: December 2016	Status: At Issue
Drawn: SJD	Checked: NJR
Scale: A3 @ 1:25,000	
Refer to December ES Supplement	
© Crown Copyright and database right 2016. Ordnance Survey 100021874. Welsh Government. © Hawffraint a hawliau cronfa ddata'r Goron 2016. Rhif Trwydded yr Arolwg Ordnans 100021874.	
dwg ref:	




Legend

- Proposed alignment of new section of motorway
- ZTV up to 5km for Junction 29 Castleton to South Wales to London Mainline (new Duffryn Railway)
- ZTV up to 3km for South Wales to London Mainline (new Duffryn Railway Underbridge) across Wentlooge Levels to south of
- ZTV up to 5km for Docks Way Landfill site (new Docks Way Junction), south of Newport Docks across River Usk to east of Uskmouth Railway line
- ZTV up to 3km for East of Uskmouth Railway line across Caldicot Levels to Steelworks Access Road, south of Bareland
- ZTV up to 5km for Steelworks Access Road, south of Bareland Street to Junction 23

Ordnance Survey data © Crown copyright and database right 2014





Llywodraeth Cymru
Welsh Government

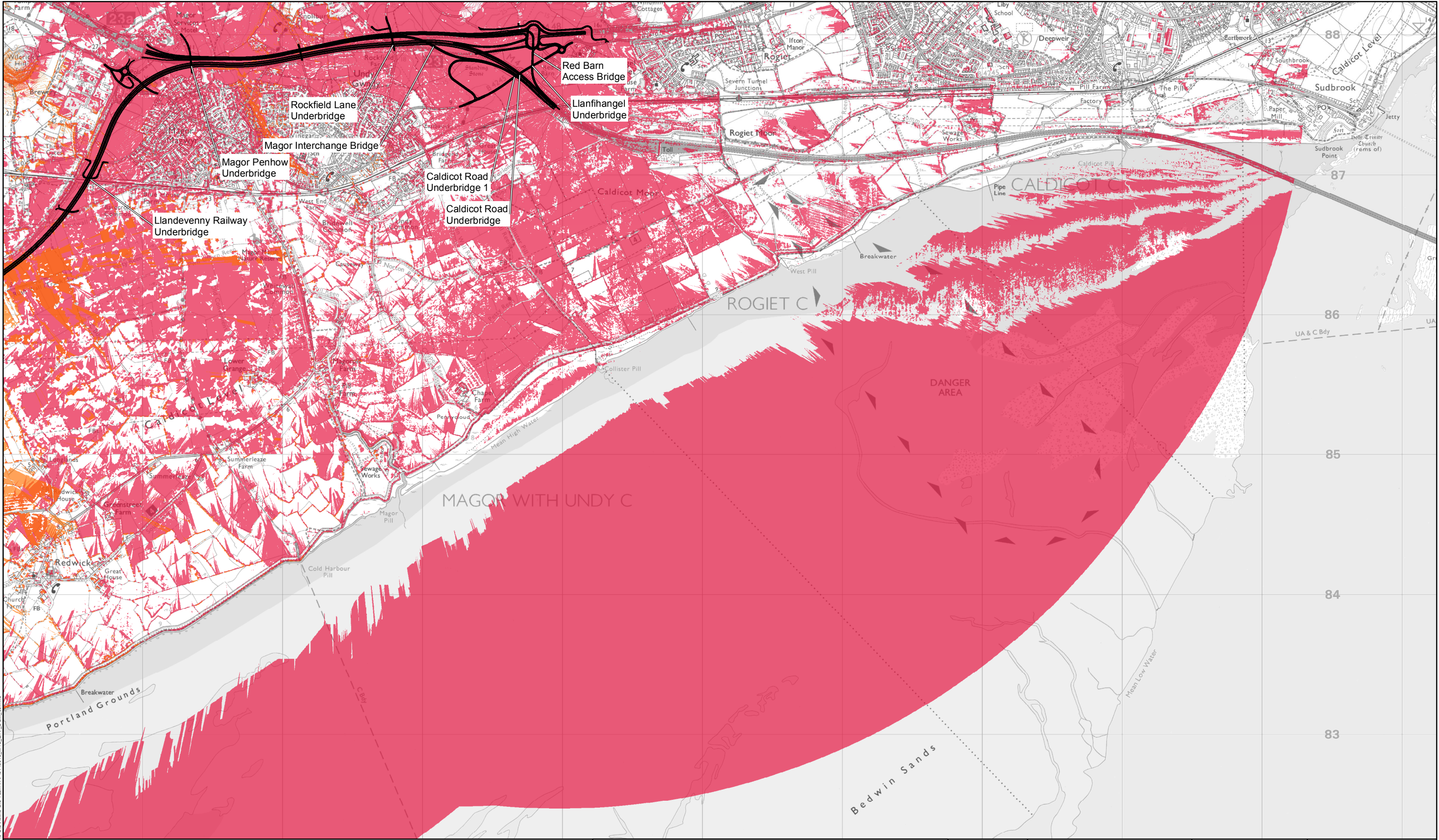
Environmental Statement

New Section of Motorway
Combined Zones of Theoretical Visibility
Sheet 9 of 10

Figure: SR9.2
Date: December 2016
Drawn: SJD
Scale: A3 @ 1:25,000
Refer to December ES Supplement

Revision: 02
Status: At Issue
Checked: NJR

© Crown Copyright and database right 2016. Ordnance Survey 100021874. Welsh Government.
© Hawlfraint a hawliau cronfa ddata'r Goron 2016. Rhif Trwydded yr Arolwg Ordnans 100021874.
dwg ref:



Legend

Proposed alignment of new section of motorway


ZTV up to 5km for Junction 29 Castleton to South Wales to London Mainline (new Duffryn Railway)

ZTV up to 3km for South Wales to London Mainline (new Duffryn Railway Underbridge) across Wentlooge Levels to south of

ZTV up to 5km for Docks Way Landfill site (new Docks Way Junction), south of Newport Docks across River Usk to east of Uskmouth Railway line

ZTV up to 3km for East of Uskmouth Railway line across Caldicot Levels to Steelworks Access Road, south of Bareland

ZTV up to 5km for Steelworks Access Road, south of Bareland Street to Junction 23



Llywodraeth Cymru
Welsh Government

Environmental Statement

New Section of Motorway
Combined Zones of Theoretical Visibility
Sheet 10 of 10

Figure: SR9.2

Date: December 2016

Drawn: SJD

Scale: A3 @ 1:25,000

Refer to December ES Supplement

Revision: 02

Status: At Issue

Checked: NJR

0 0.5 1 Kilometres

© Crown Copyright and database right 2016. Ordnance Survey 100021874. Welsh Government.
© Hawffraint a hawliau cronfa ddata'r Goron 2016. Rhif Trwydded yr Arolwg Ordnans 100021874.

dwg ref: