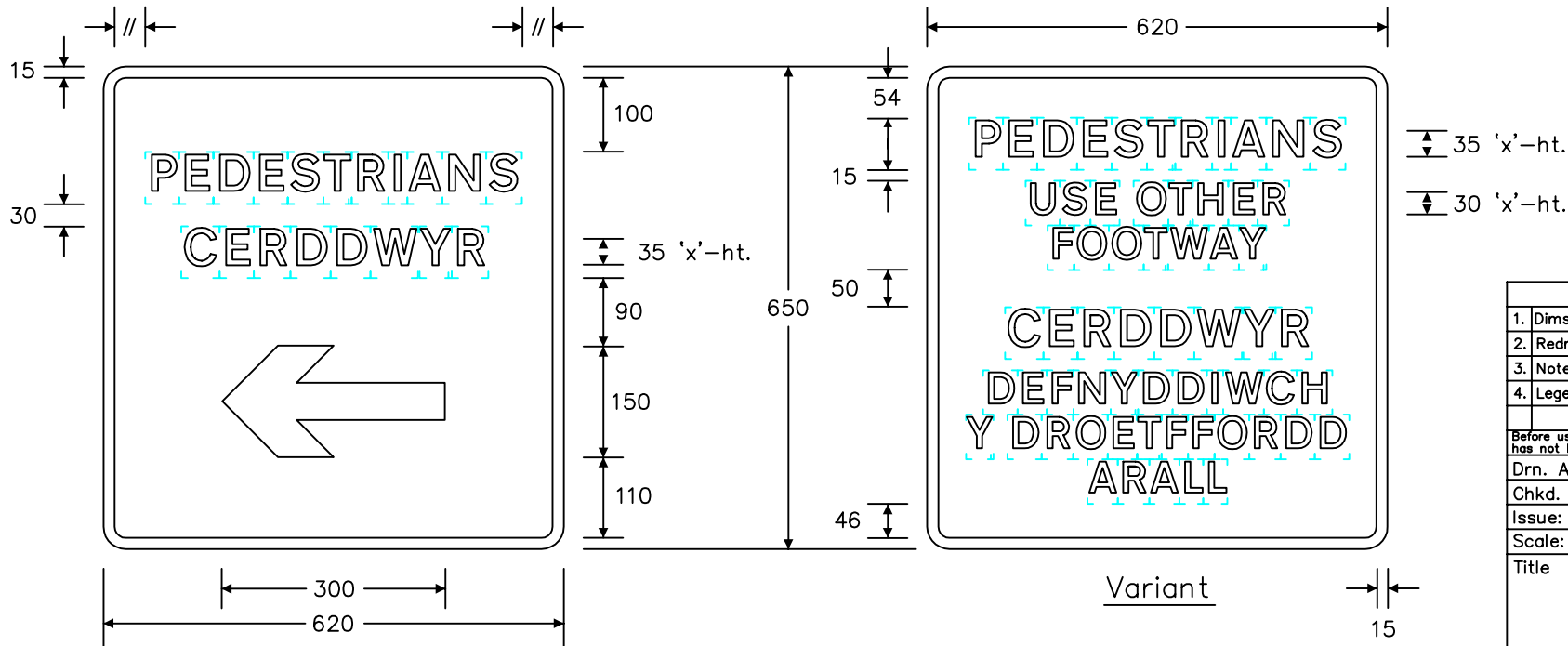


Notes: -

1. The legend is from the Transport Medium alphabet at the 'x'-heights shown.
2. The outlines of the tiles do not form part of the sign.
3. The colours are as follows: -
 Legend, border & arrow — White
 Background — Red
4. The illumination of the sign must accord with the requirements of the current 'Traffic Signs Regulations and General Directions'.
5. All dimensions are given in millimetres.
6. The order of languages may be reversed if required.



The arrow may point horizontally to the right

Variant

REVISIONS	
1.	Dims. amended, no. chgd. from 567.1 8.11.96
2.	Redrawn & notes amended 15.4.03
3.	Notes amended 18.12.06
4.	Legend amended 9.10.08
Before using this drawing, confirm with RNM3 Division that it has not been superseded.	
Drn. A.T.I.	Appd.
Chkd.	Appl. date 24.9.81
Issue: 9.10.08	
Scale: Photo-reduced	
Title	
Temporary Signs	
TEMPORARY ROUTE FOR PEDESTRIANS	
WELSH ASSEMBLY GOVERNMENT	
Drwg. no.	WAG/P 7018