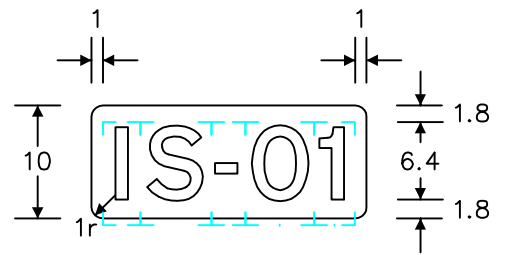


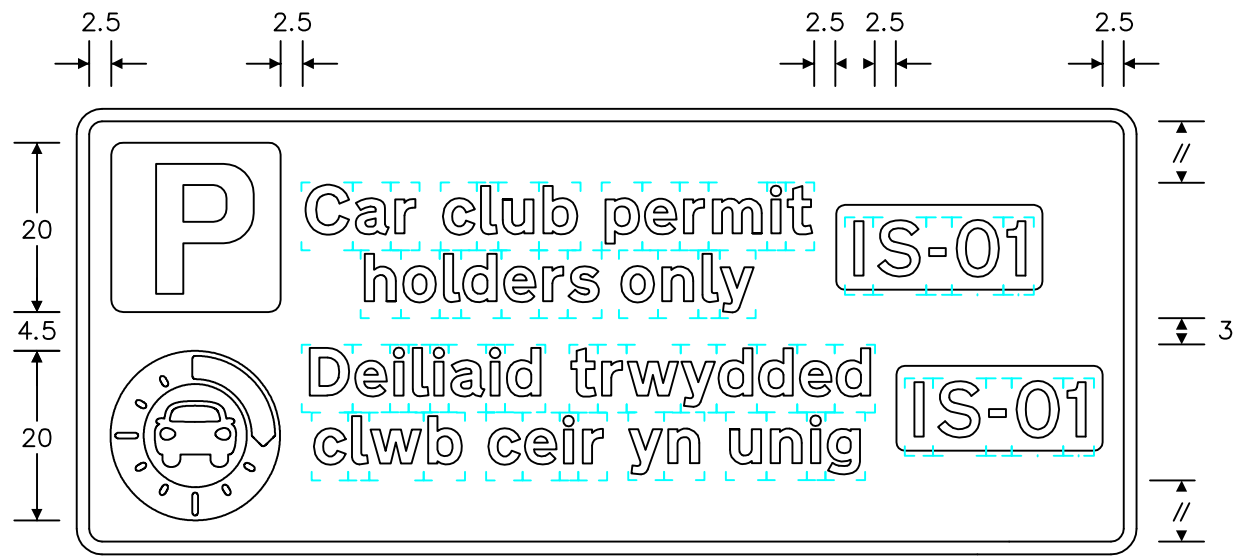
Notes: -

- The legend is from the Transport Heavy alphabet at the 'x'-heights shown.
- The outlines of the tiles do not form part of the sign.
- Details of the 'P' symbol are given on drwg. S 43.
- Details of the 'car club' symbol are given on drwg. S 64.
- The colours are as follows: -

Background	_____	White	Car club symbol main ring	_____	Blue
Legend, border	_____	Black	Car club symbol other elements	_____	Blue
'P' symbol	_____	White	Code letter	_____	White
'P' tile	_____	Blue	Code letter tile	_____	Black
- The illumination of the sign must accord with the requirements of the current 'Traffic Signs Regulations and General Directions'.
- The 'x'-heights shown are given in millimetres, all other dimensions are given in stroke widths (i.e. 1s/w = 1/4'x'-height).
- The order of languages may be reversed if required.
- See sheet 2 for a further variant



The code letter is from the Transport Medium alphabet
The characters and tile used for the code may vary in size and be in any contrasting colours



REVISIONS	
Before using this drawing, confirm with RNM3 Division that it has not been superseded.	
Drn. G.A.T.	Appd.
Chkd.	Appl. date 31.1.12
Issue: 30.3.12	
Scale: Photo-reduced	
Title Regulatory Sign CAR CLUB PERMIT HOLDERS ONLY	
WELSH GOVERNMENT	
Drwg. no. WAG/P 660.8	
Sheet 1 of 2	

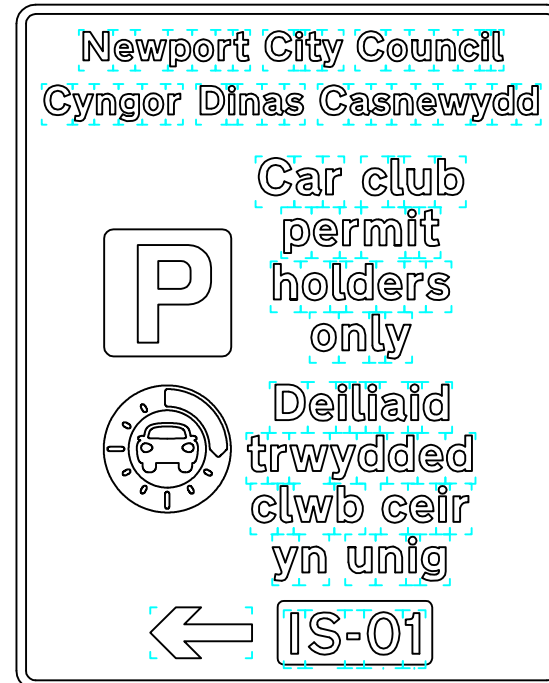
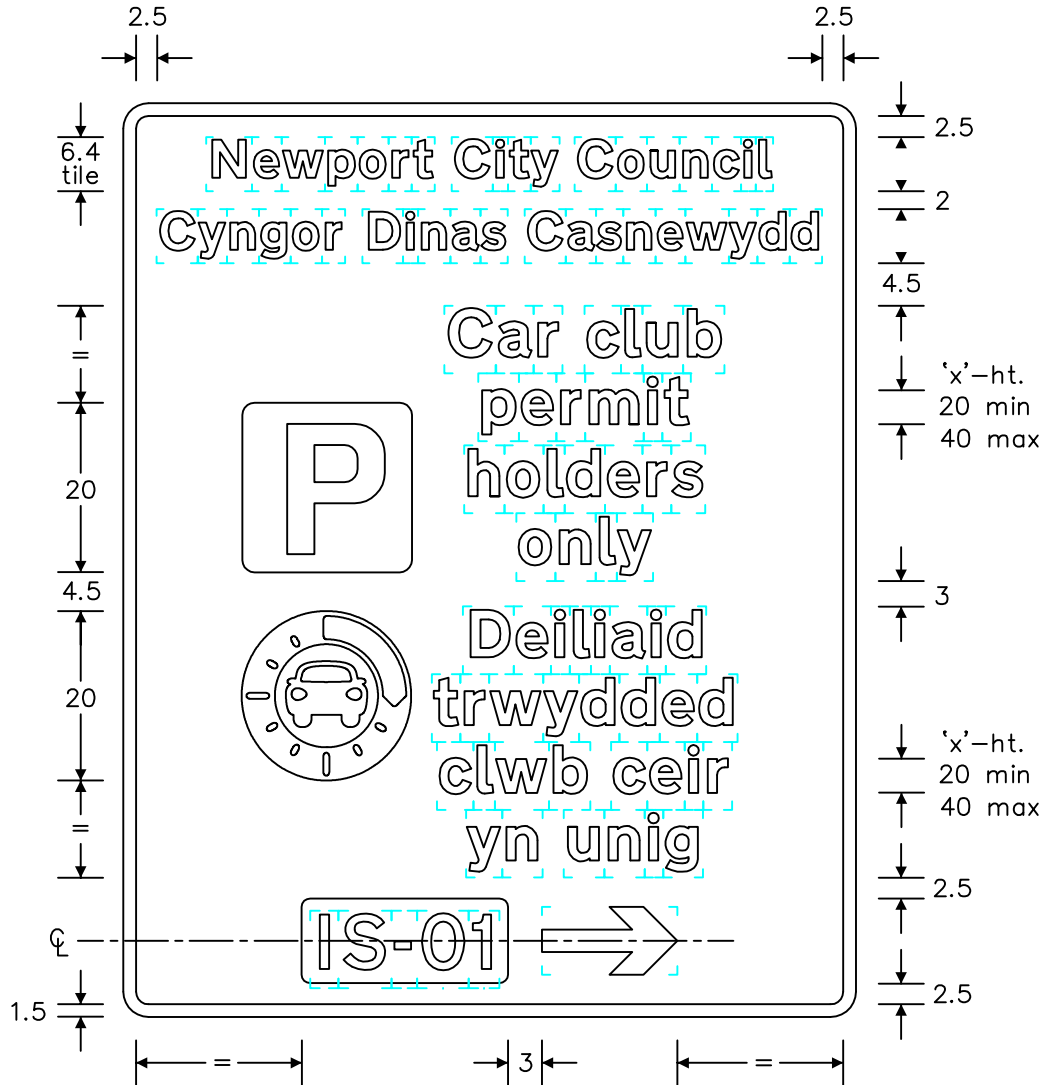
Notes: -

1. The legend is from the Transport Heavy alphabet at the 'x'-heights shown.
2. The outlines of the tiles do not form part of the sign.
3. Details of the 'P' symbol are given on drwg. S 43.
4. Details of the 'car club' symbol are given on drwg. S 64.
5. The colours are as follows: -

Background	White	Car club symbol main ring	Blue
Legend, border & arrow	Black	Car club symbol other elements	Blue
'P' symbol	White	Code letter	White
'P' tile	Blue	Code letter tile	Black

6. The illumination of the sign must accord with the requirements of the current 'Traffic Signs Regulations and General Directions'.
7. The 'x'-heights shown are given in millimetres, all other dimensions are given in stroke widths (i.e. 1s/w = 1/4'x'-height).
8. The order of languages may be reversed if required.
9. See sheet 1 for further dimensions and variants

The code letter is from the Transport Medium alphabet
The characters and tile used for the code may vary in size and be in any contrasting colours



Variant at reduced scale

REVISIONS	
Before using this drawing, confirm with RNM3 Division that it has not been superseded.	
Drn. G.A.T.	Appd.
Chkd.	Appl. date 31.1.12
Issue: 30.3.12	
Scale: Photo-reduced	
Title Regulatory Sign CAR CLUB PERMIT HOLDERS ONLY	
WELSH GOVERNMENT	
Drwg. no. WAG/P 660.8	
Sheet 2 of 2	