

Notes:-

- The legend is from the Transport Medium alphabet at the 'x'-heights shown.
- The roundel illustrated is proportional to the one shown on drawing P 622.1A. Other roundels which may be used are shown in the table below.
- The outlines of the tiles do not form part of the sign.
- The colours are as follows:-  
 Background \_\_\_\_\_ Blue  
 Border and legend \_\_\_\_\_ White  
 Thin border to roundel \_\_\_\_\_ White  
 Roundel \_\_\_\_\_ see appropriate drawing
- The illumination of the sign must accord with the requirements of the current 'Traffic Signs Regulations and General Directions'.
- The 'x'-heights shown are given in millimetres, all other dimensions are given in stroke widths (i.e. 1s/w = 1/4'x'-height).
- The sign is designed in accordance with the current design rules.
- The order of languages may be reversed if required.
- See sheets 2 and 3 for variants.

TABLE OF SIZES FOR ROUNDEL VARIANTS (Stroke Widths)			
Roundel Diagram No.	Diameter	Dimension A	Dimension B
622.1A (weight limit)	30	18	19.5
626.2A (weak bridge-roundel only)	24	15	16.5
629 (width limit)	24	15	16.5
629A (width limit - metric/imp)	30	18	19.5
629.1 (length limit)	30	18	19.5
629.2 (height limit)	24	15	16.5
629.2A (height limit - metric/imp.)	30	18	19.5

Formula for calculating signed metric height:-

Measure bridge clearance with metric rule to two decimal places, rounding down to nearest centimetre.

(1) If the second decimal number is 8 or 9, delete it and sign the bridge with the remaining whole number and the first decimal number.

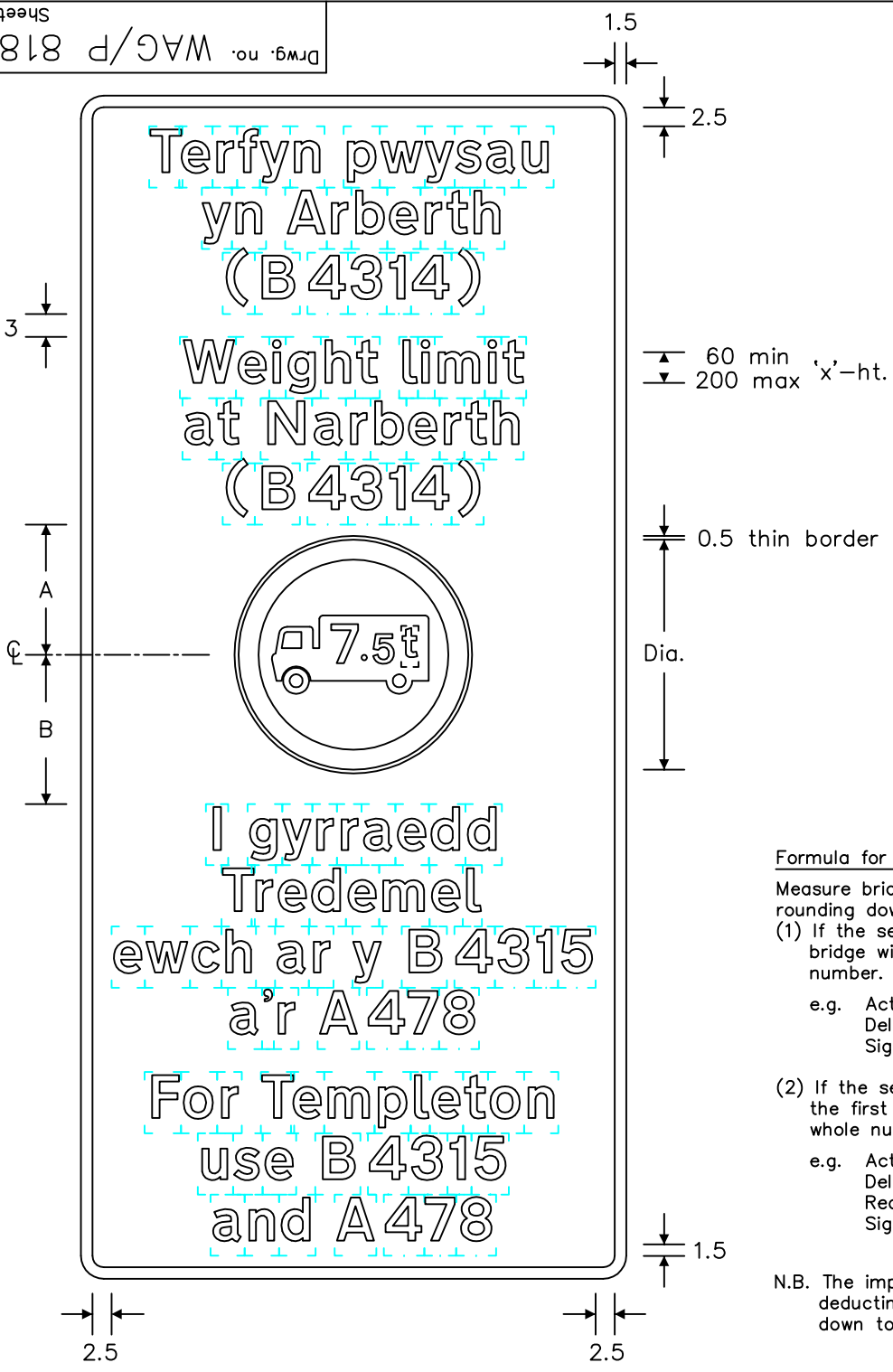
e.g. Actual measured height: 3.29m  
 Delete second decimal number  
 Signed height: 3.2m

(2) If the second decimal number is 7 or less, delete it and reduce the first decimal number by 1. Sign the bridge with the remaining whole number and first decimal number, as reduced.

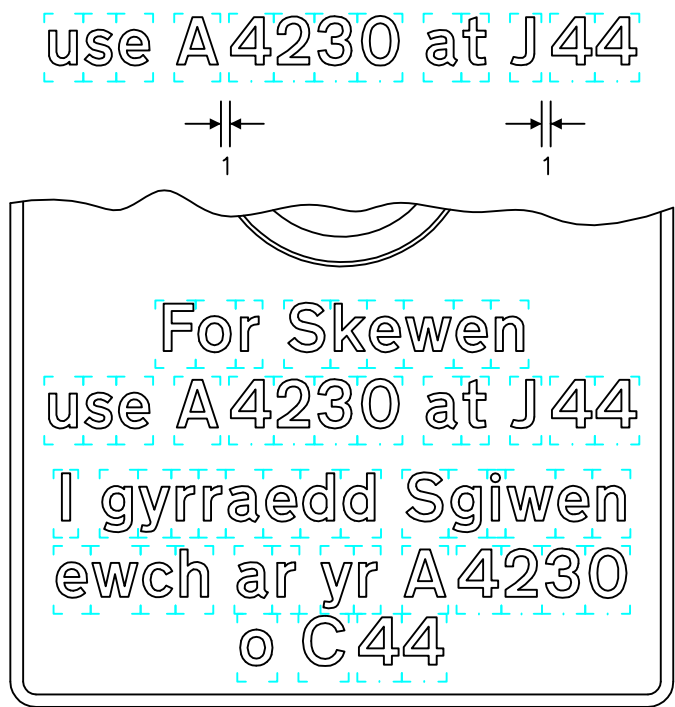
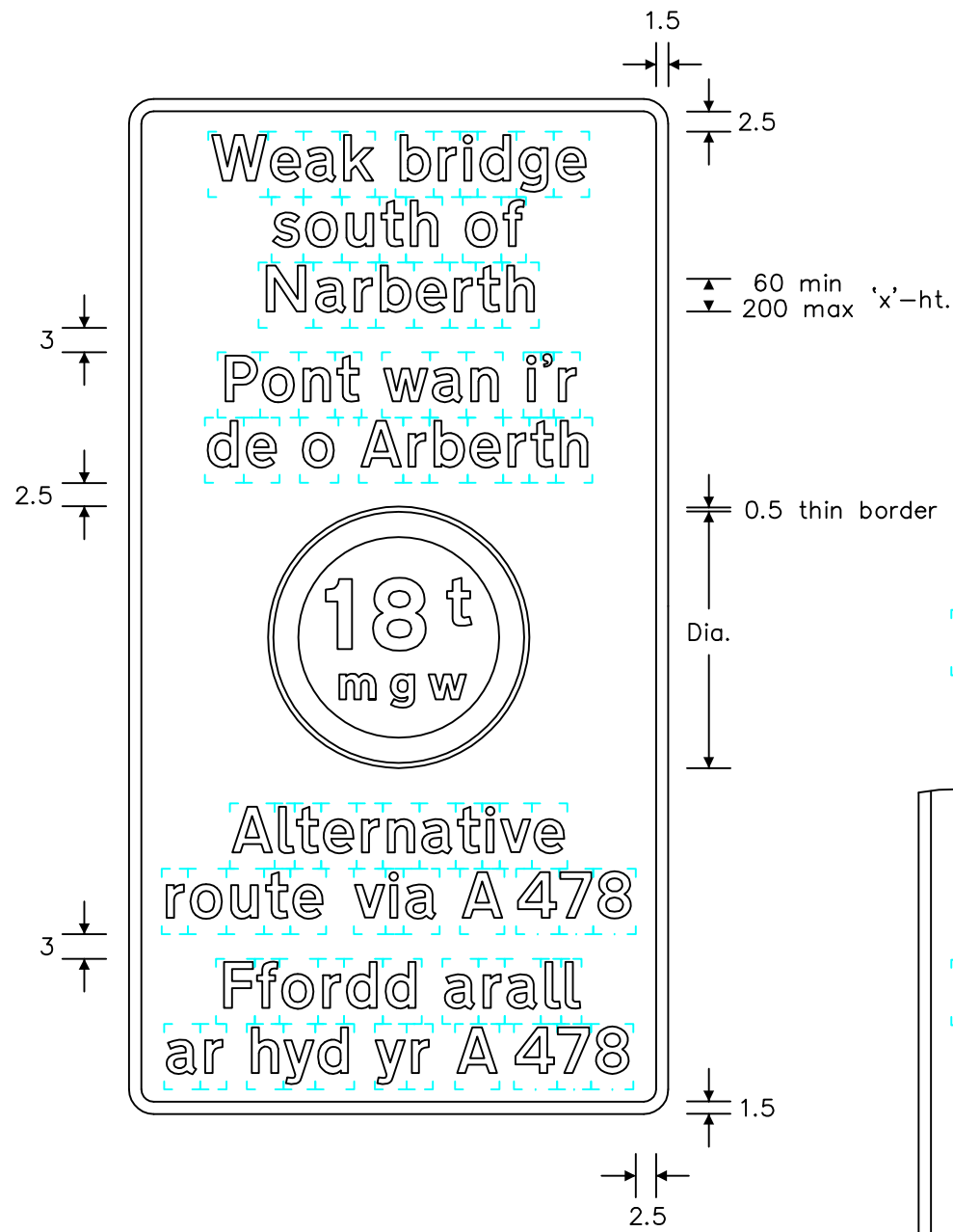
e.g. Actual measured height: 3.45m  
 Delete second decimal number: 3.4m  
 Reduce by 0.1m  
 Signed height: 3.3m

N.B. The imperial height is obtained by using an imperial rule and deducting 3 inches from the measured headroom and rounding down to the nearest multiple of 3 inches.

REVISIONS	
1.	Variants added to sheet 2 5.10.05
2.	Sheet 2 redrawn and variants added to sheet 3 7.2.12
Before using this drawing, confirm with RNM3 Division that it has not been superseded.	
Drn. A.T.I.	Appd.
Chkd.	Appl. date 26.8.03
Issue: 30.3.12	
Scale: Photo-reduced	
Title	Informatory Sign
ADVANCE WARNING OF PROHIBITION OR RESTRICTION	
WELSH GOVERNMENT	
Drwg. no.	WAG/P 818.4
Sheet 1 of 3	



- Notes:-
1. The legend is from the Transport Medium alphabet at the 'x'-heights shown.
  2. The roundel illustrated is proportional to the one shown on drawing P 626.2A. Other roundels which may be used are shown on sheet 1
  3. The outlines of the tiles do not form part of the sign.
  4. The colours are as follows:-  
 Background \_\_\_\_\_ Blue  
 Border and legend \_\_\_\_\_ White  
 Thin border to roundel \_\_\_\_\_ White  
 Roundel \_\_\_\_\_ see appropriate drawing
  5. The illumination of the sign must accord with the requirements of the current 'Traffic Signs Regulations and General Directions'.
  6. The 'x'-heights shown are given in millimetres, all other dimensions are given in stroke widths (i.e. 1s/w = 1/4'x'-height).
  7. The sign is designed in accordance with the current design rules.
  8. The order of languages may be reversed if required.
  9. See sheets 1 and 3 for variants.



REVISIONS	
1.	Variants added to sheet 2 5.10.05
2.	Sheet 2 redrawn and variants added to sheet 3 7.2.12
Before using this drawing, confirm with RNM3 Division that it has not been superseded.	
Drn. A.T.I.	Appd.
Chkd.	Appl. date 26.8.03
Issue: 30.3.12	
Scale: Photo-reduced	
Title	Informatory Sign
ADVANCE WARNING OF PROHIBITION OR RESTRICTION	
WELSH GOVERNMENT	
Drwg. no.	WAG/P 818.4
Sheet 2 of 3	

