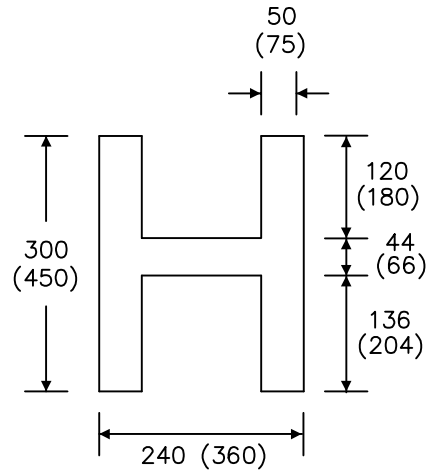
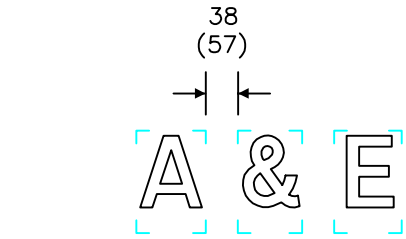
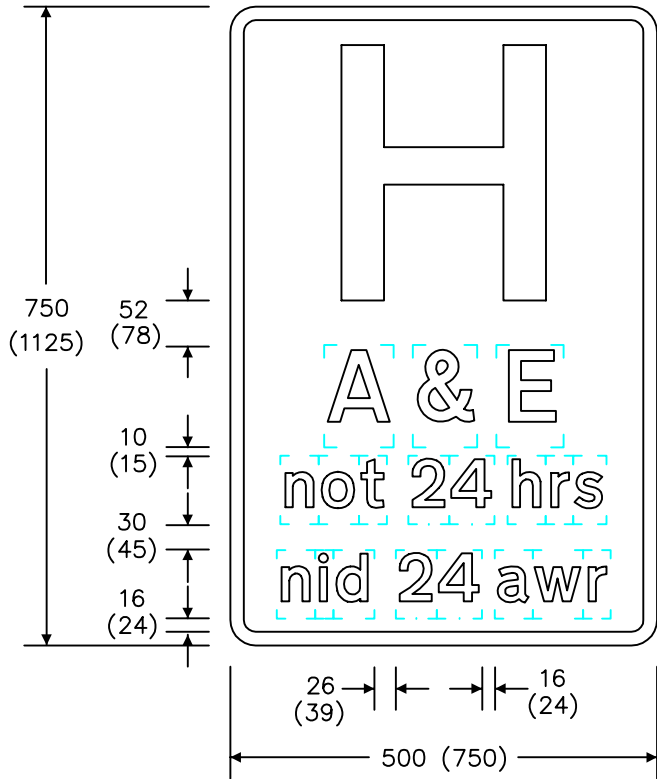


Notes: -

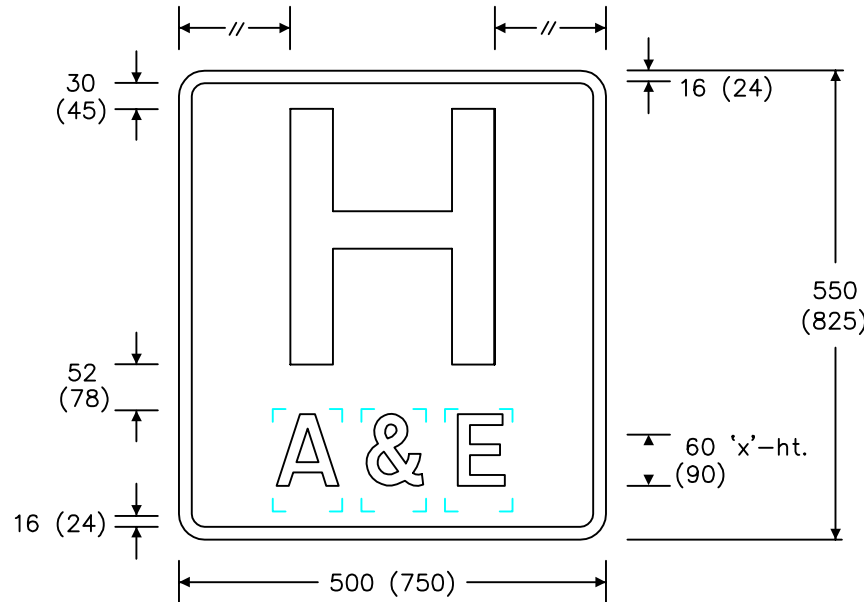
1. The lettering is from the Transport Medium alphabet at the 'x'-heights shown.
2. The outlines of the tiles do not form part of the sign.
3. The colours are as follows: -
Background _____ Red
Legend, symbol _____ White
and border _____ White
4. The illumination of the sign must accord with the requirements of the current 'Traffic Signs Regulations and General Directions'.
5. The 'x'-heights shown are given in millimetres, all other dimensions are given in stroke widths (i.e. 1s/w = 1/4'x'-height).
6. The sign is designed in accordance with the current design rules.
7. The order of languages may be reversed if required. (This does not apply to 'A & E' which is recognised as being part of the 'H' symbol.)



60 'x'-ht. (90)

40 'x'-ht. (60)

Variant



REVISIONS	
1.	No. changed from 827, redesigned 13.4.94
2.	Redrawn and legend amended 30.11.95
3.	Redrawn & notes amended 11.10.99
4.	'A & E' design amended 27.8.03
5.	Notes amended 6.3.07
Before using this drawing, confirm with RNM3 Division that it has not been superseded.	
Drn.	A.T.I.
Appd.	
Chkd.	Appl. date 1.2.78
Issue: 6.3.07	
Scale: Photo-reduced	
Title	Informatory Sign
HOSPITAL Accident & Emergency	
WELSH ASSEMBLY GOVERNMENT	
Drwg. no.	WAG/P 827.2