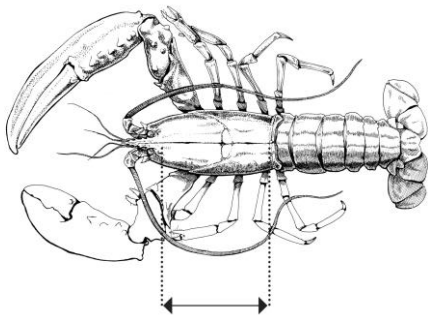


LEGISLATION FOR CRUSTACEAN FISHERIES IN WALES

with effect from 1 February 2016



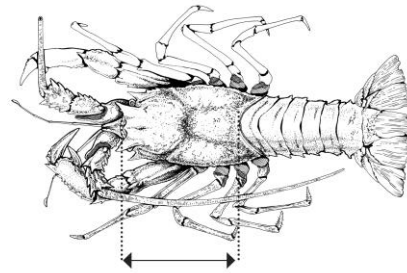
Llywodraeth Cymru
Welsh Government



Lobster

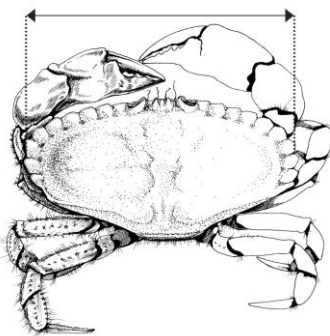
Minimum Size - 90mm

Length of carapace – mid-line from the back of either eye socket to the distal edge of the carapace



Minimum Size - 110mm

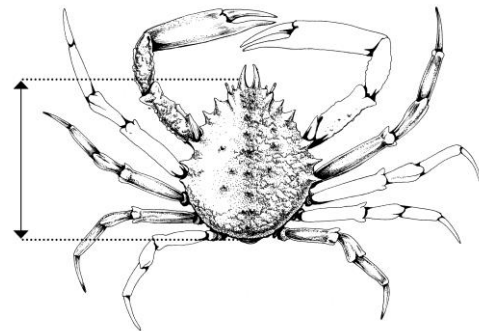
Length of carapace – tip of the central rostral spine to the distal edge of the carapace



Brown / Edible Crab

Minimum size - 140mm

Width of the carapace measured across the broadest part of the back



Spider Crab - Minimum Size:

Male - 130mm Female – 120mm

Length of carapace – mid-line from the edge of the carapace between the rostrums to the posterior edge of the carapace

Velvet Crab

Minimum size remains unchanged at
65mm

Width of carapace measured across the broadest part, excluding spines, of the back

Parts of Crustaceans

It is prohibited to land detached parts of Lobster, Edible Crab, Spider Crab, Crawfish, Velvet Crab and Green Crab

V-notched Lobsters & Crawfish

It is prohibited to land V-notched or mutilated lobsters and crawfish

The above measures apply in all Welsh territorial water (i.e. 0–12 nautical miles). Carriage restrictions also apply.

Further information will be available on our website from 1 February

<http://gov.wales/topics/environmentcountryside/marineandfisheries/sea-fisheries/commercial/compliance-monitoring/welsh-crustacean-fishery?lang=en>

Contact: 01646 693412 or 01407 765757. E-mail: marineandfisheries@wales.gsi.gov.uk

