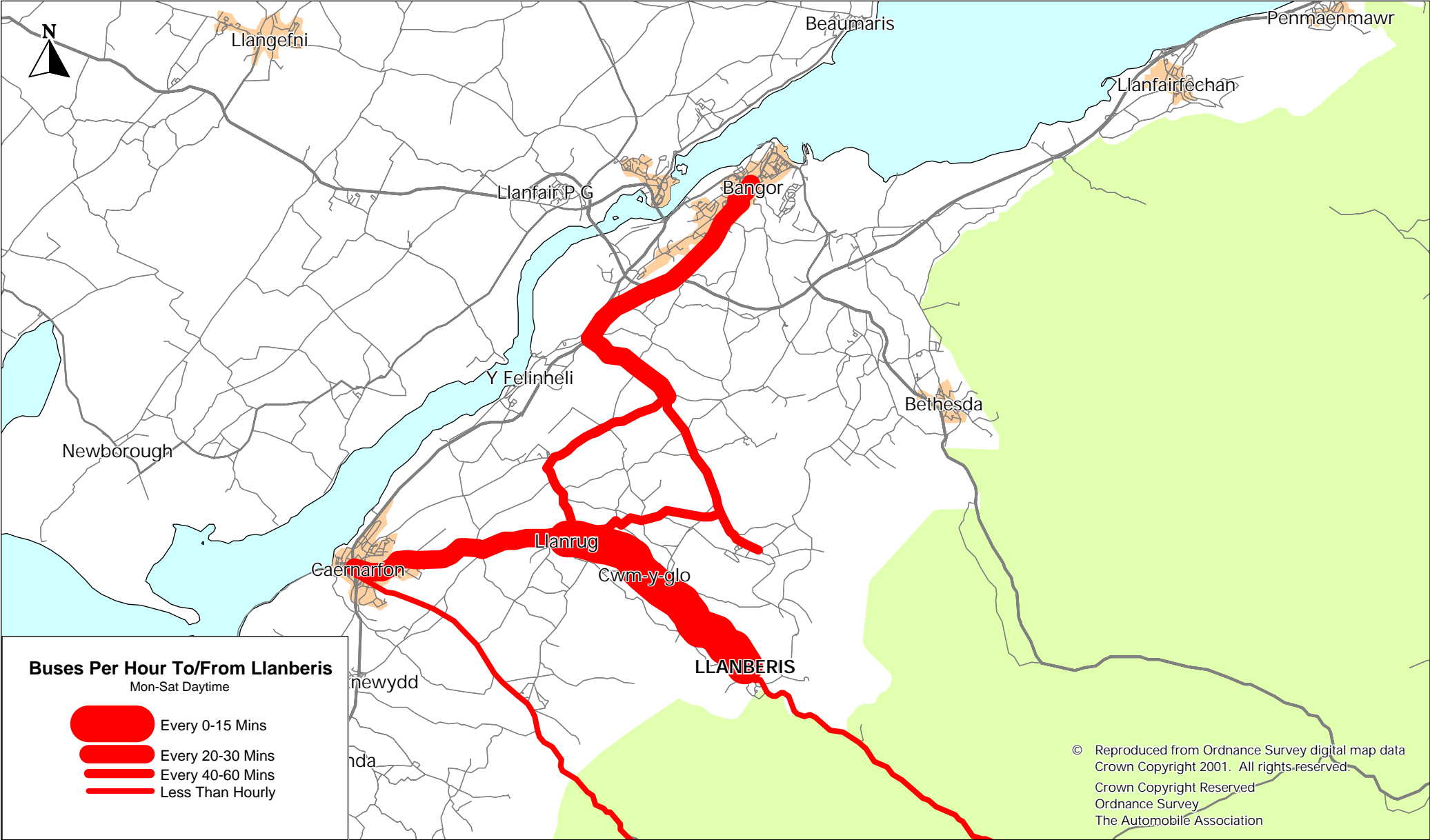
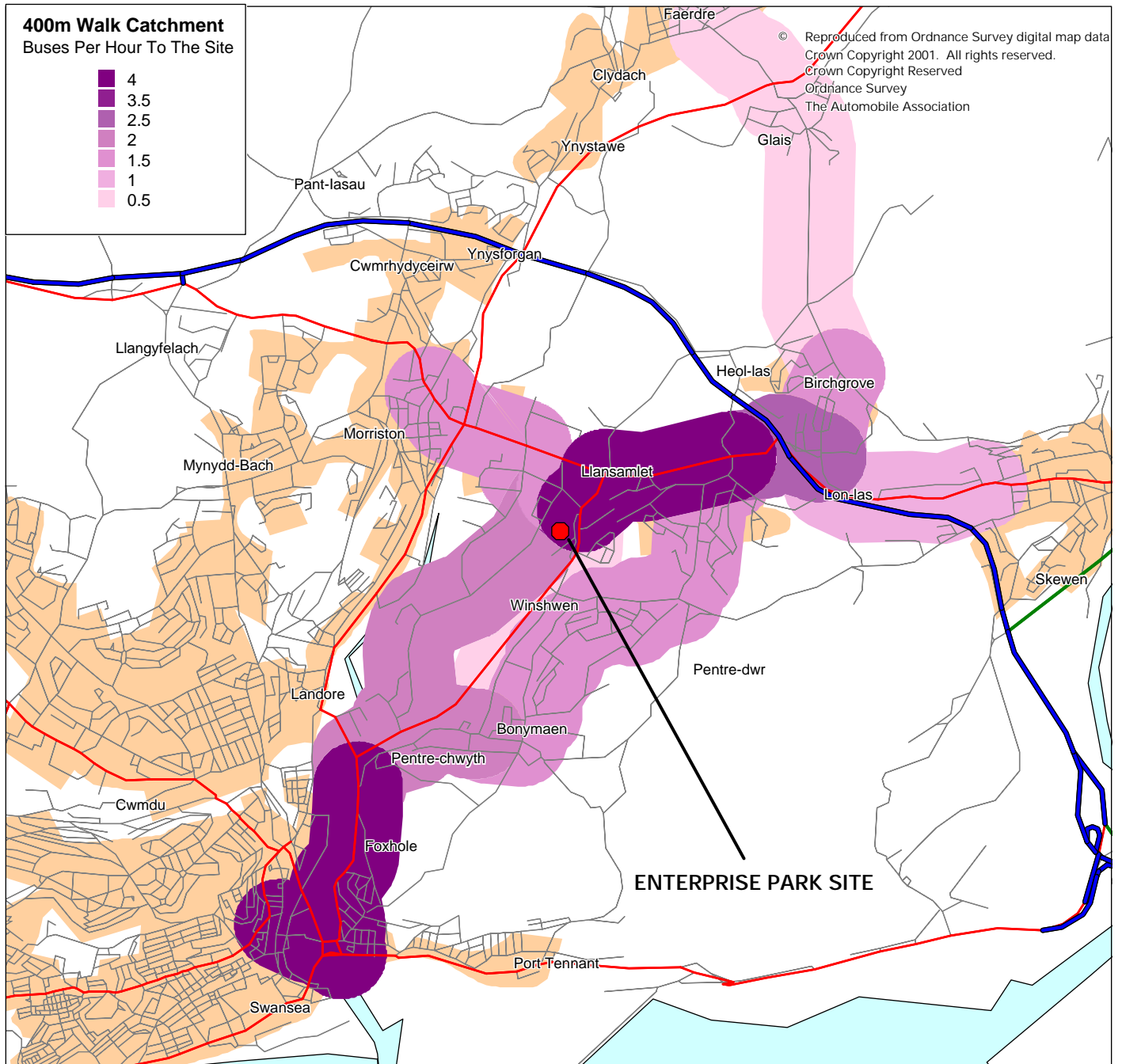


**FIGURE 10.8 - FREQUENCY OF SERVICE FROM A POINT**



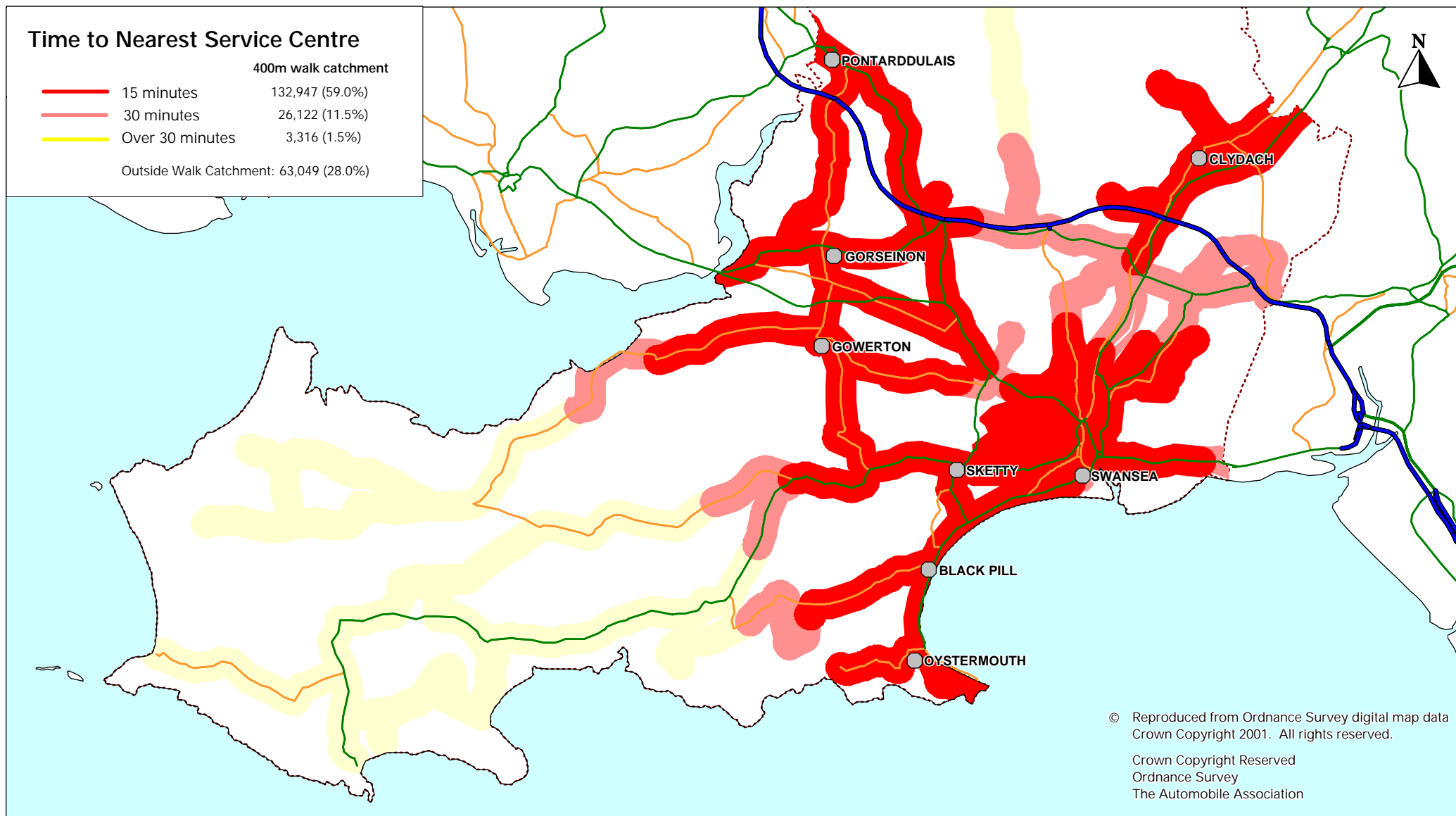
*Frequencies shown are the total along each link. Service details entered into a database can be queried in order to display services to/from a particular settlement or point.*

**FIGURE 10.9 - TOTAL FREQUENCY OF SERVICES TO A LOCATION**



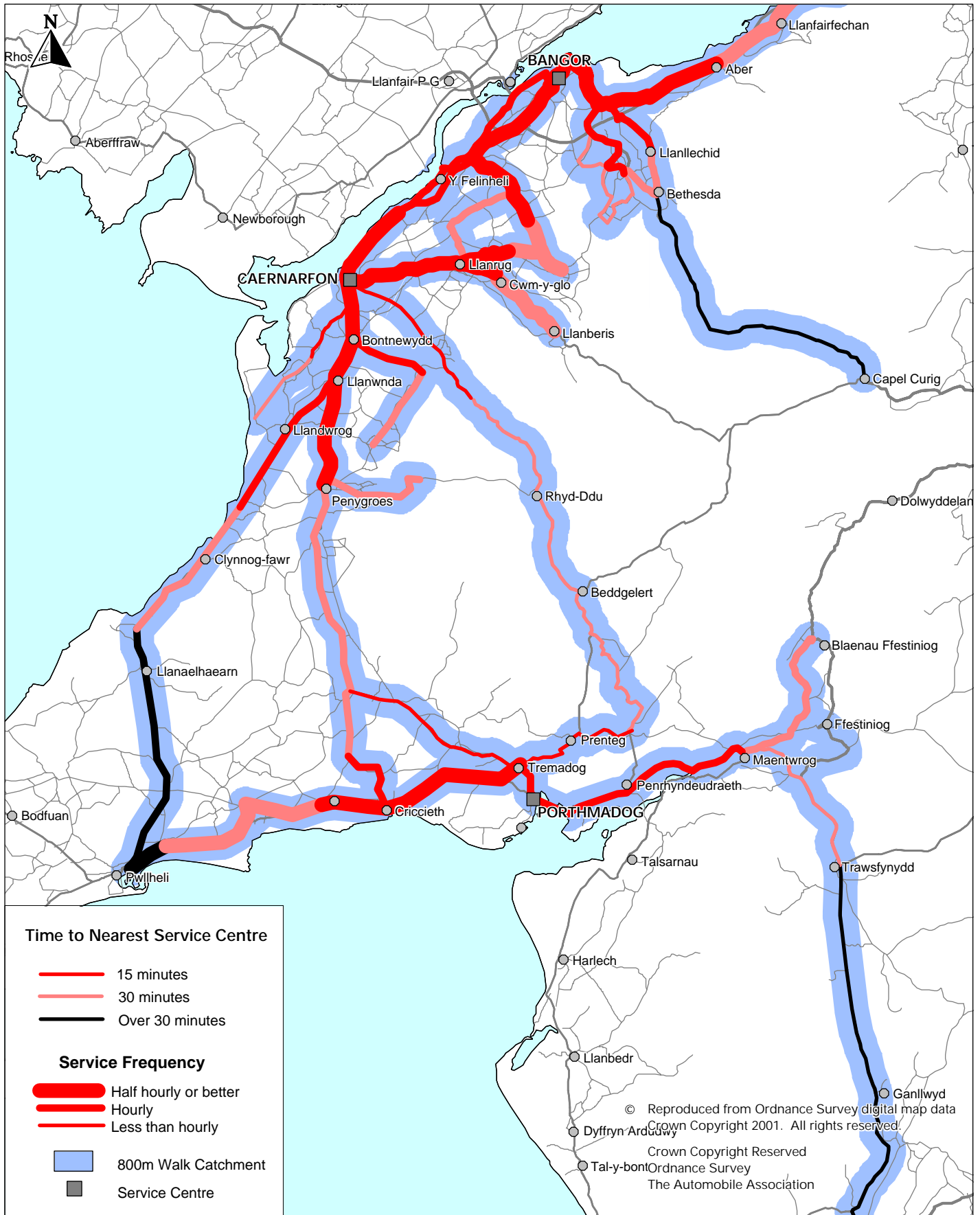
*Thematically shaded catchments, reflecting total frequencies along each link*

**FIGURE 10.10 - SERVICE LEVELS TO MULTIPLE LOCATIONS (1)**



*Public Transport Access to Service Centres in Swansea. Walk catchment isochrones have been manually produced for 15, 30 and over 30 minutes travel time to the nearest service centre. Statistics on the number of people within each type of isochrone have been derived using census data.*

**FIGURE 10.11 - SERVICE LEVELS TO MULTIPLE LOCATIONS (2)**



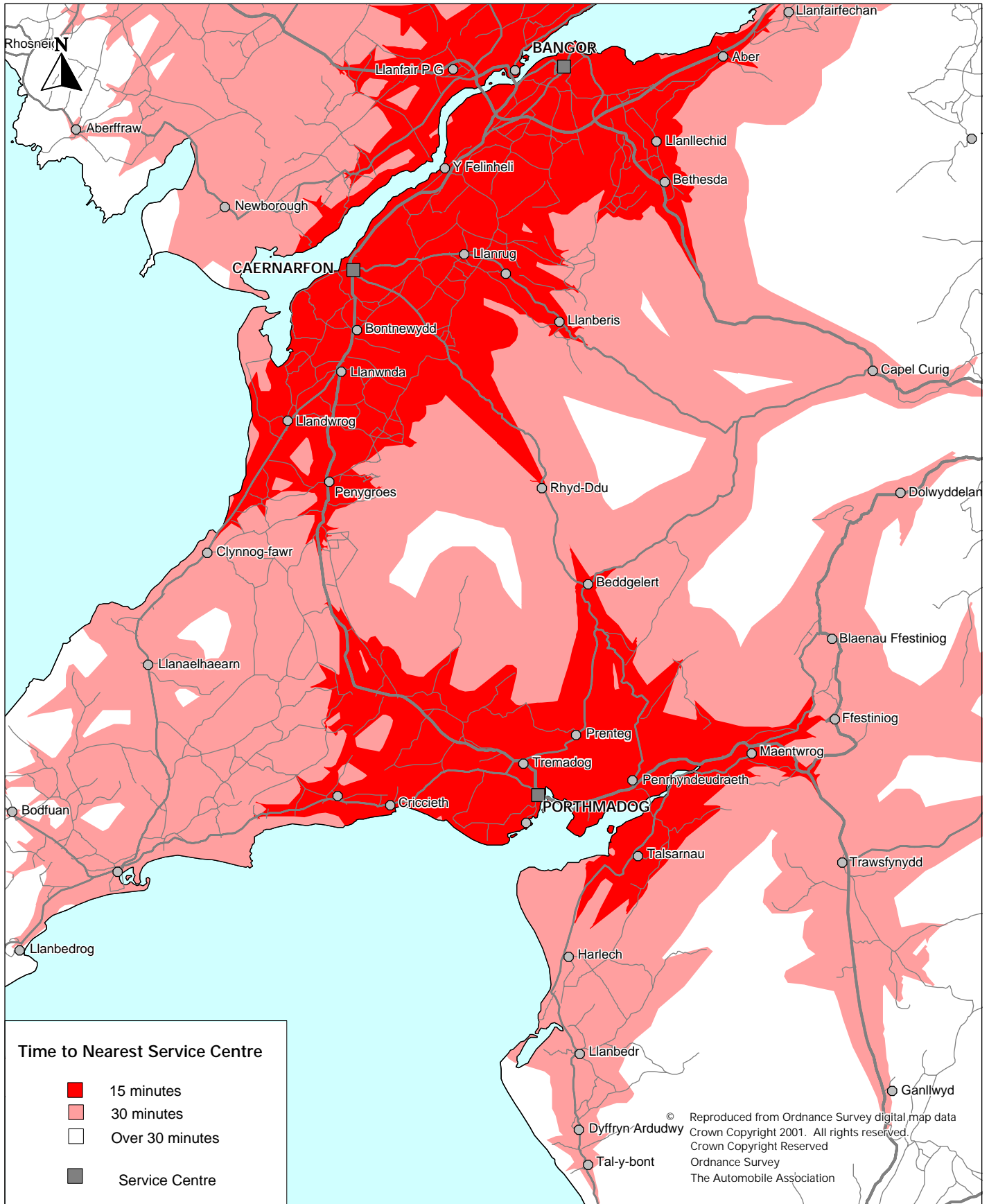
*Public Transport access to service centres in Gwynedd. In this example, 15, 30 and over 30 minute isochrones have been combined with service frequency details and walk catchments*

**FIGURE 10.12 - CAR ACCESS ISOCHRONES TO MULTIPLE LOCATIONS (1)**



*Car access to service centres in Swansea. Produced using isochrone generating software, combining isochrones to individual locations to form an overall access isochrone.*

**FIGURE 10.13 - CAR ACCESS ISOCHRONES TO MULTIPLE LOCATIONS (2)**



*Access by car to Gwynedd service centres*