

Pupil Deprivation Grant

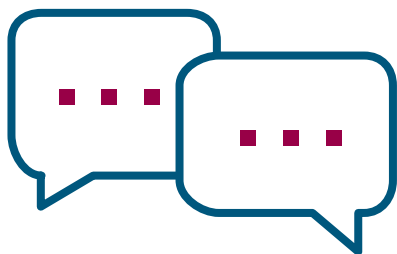


Llywodraeth Cymru
Welsh Government

What interventions should you use in your school?

Feedback

- Set goals to increase learning
- Provide specific guidance on how to improve
- Turn mistakes into a positive learning experience



Peer tutoring

- Cross-aged tutoring can be more effective
- Set challenging activities to make tutoring beneficial



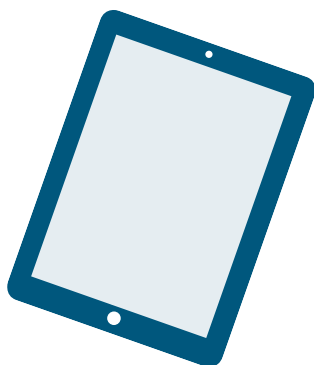
Collaborative learning

- Encourage learners to talk and articulate thinking
- Develop structured approaches when designing activities



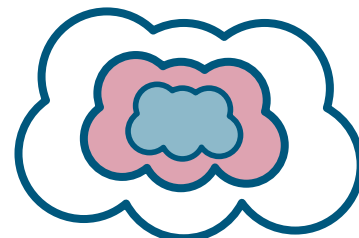
Digital technology

- Use to support, not to replace traditional methods



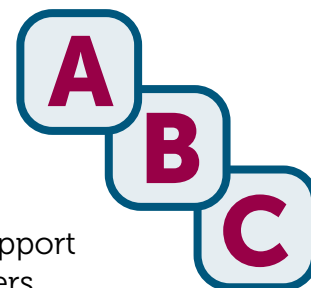
Metacognition and self-regulation

- Encourage learners to plan and organise
- Promote thinking and encourage questioning



Early Years

- Show parents/carers how they can be involved in their child's pre-school learning
- Develop activities to support pre-reading and numbers



Parental involvement

- Provide parents/carers with simple methods to support their children
- Ensure the school environment is welcoming
- Develop a flexible approach to fit around parents'/carers' schedule



Teaching assistants

- Use for specific interventions and pre-teaching
- Provide training so teachers and teaching assistants work together
- Train on assessment for learning and use of questioning



For further information on evidence-based interventions visit the [Sutton Trust Toolkit](#)