

### CYNLLUN O'R LLEOLIAD LOCATION PLAN

### NODIADAU ER GWYBODAETH: NOTES FOR INFORMATION:

- ..... Fin Cyngr Tref a Chymuned  
Town and Community Boundary
- ~~~~~ Fin Sirol  
County Boundary
- Fin y briffordd  
Highway Boundary
- - - - - Ffordd Cyhoeddus  
Public Right of Way
- Rhifau tr caeedig penodol i'r cynllun  
Enclosure numbers specific to the scheme
- Fin Parc Cenedlaethol  
National Park Boundary

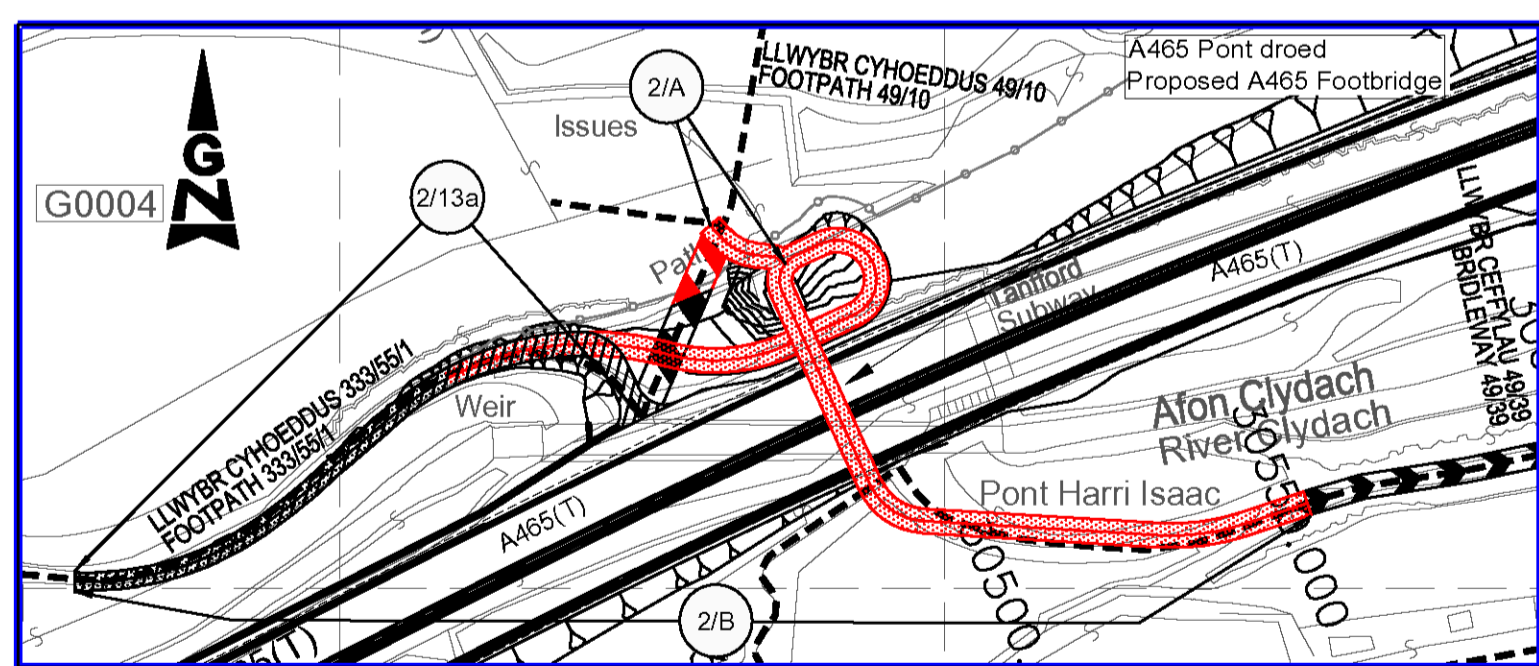
### LLWYBR Y GEFNFFORDD NEWYDD: ROUTE OF NEW TRUNK ROAD:

- LLwyr y gefnffordd newydd ar glawdd  
Route of new trunk road on embankment
- LLwyr y gefnffordd newydd mewn cloddiau  
Route of new trunk road in cutting

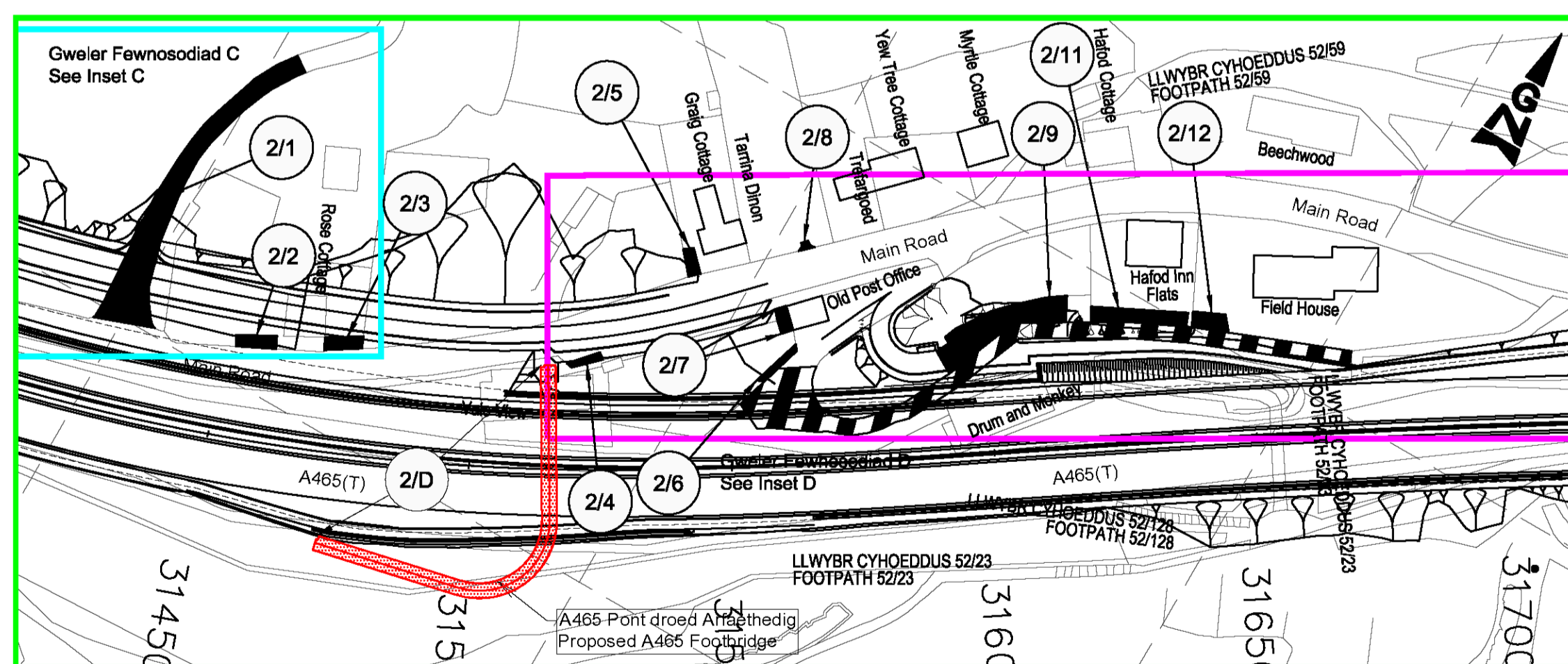
### ALLWEDD: KEY:

- A465(T) Y gefnffordd bresennol  
Existing trunk road
- Priffordd newydd  
New highway
- Priffordd i'w gwella  
Highway to be improved
- Priffordd yn cael ei chau  
Highway to be stopped up
- Mynedfa breifat newydd  
New private means of access
- Mynedfa breifat i'w chau i fyny  
Private means of access to be stopped up
- Priffordd Dros Dro  
Temporary Highway
- Cau Dros Dro  
Temporary Closure

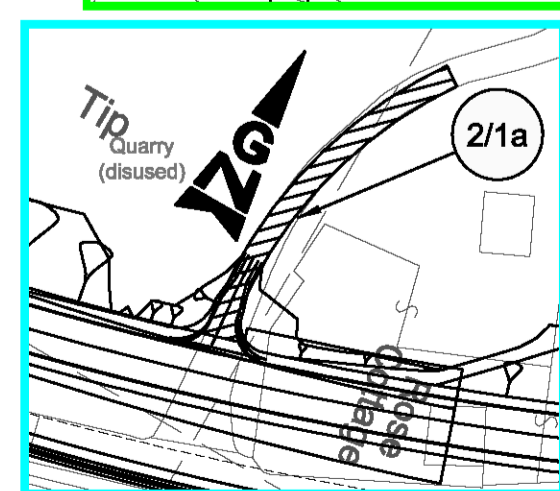
Prif Gynllun Main Plan 0 50 100 150 200  
GRADDFA/SCALE 1:2500 METRAU/METRES



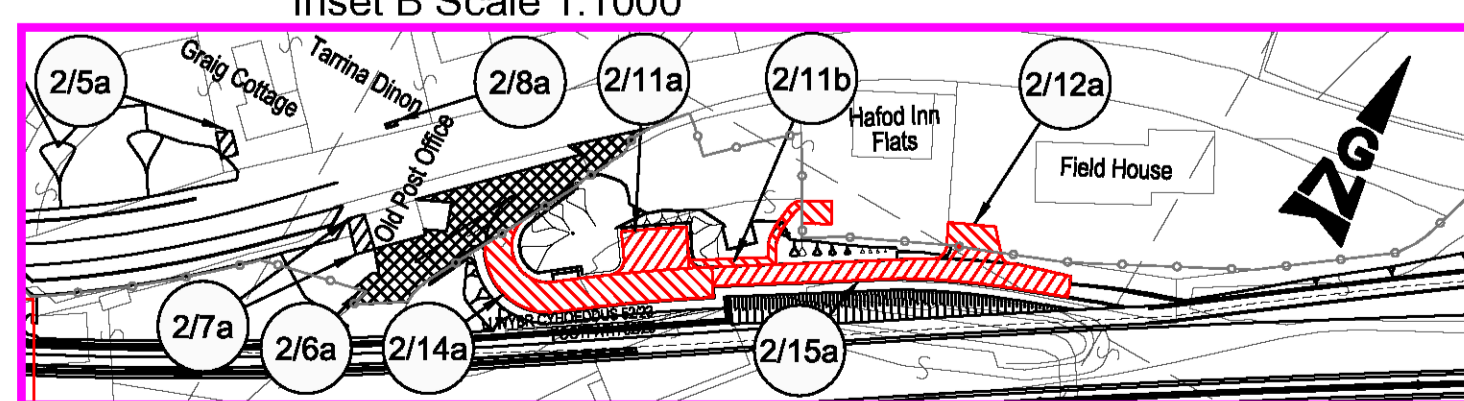
Mewnodiad A graddfa 1:1250  
Inset A Scale 1:1250



Mewnodiad B graddfa 1:1000  
Inset B Scale 1:1000



Mewnodiad C graddfa 1:1000  
Inset C Scale 1:1000



Mewnodiad D graddfa 1:1000  
Inset D Scale 1:1000

GORCHYMYN GORCHYMYN CEFNFFORDD CASTELL-NEDD I'R FENNI (YR A465) (DEUOLI O'R FENNI I HIRWAUN A'R FFYRDD YMUNO AC YMADAEL) A CHEFNFFORDD MAN I'R DWYRAIN O ABERCYNON I FAN I'R DWYRAIN O DDOWLAIS (YR A4060) A CHEFNFFORDD CAERDYDD I LANCONWY (YR A470) (FFYRDD CYSYLLTU) (GILWERN I FRYN-MAWR) (FFYRDD YMYL) 2014 (AMRYWIO) 201-

THE NEATH TO ABERGAVENNY TRUNK ROAD (A465) (ABERGAVENNY TO HIRWAUN DUALLING AND SLIP ROADS) AND EAST OF ABERCYNON TO EAST OF DOWLAIS TRUNK ROAD (A4060) AND CARDIFF TO GLAN CONWY TRUNK ROAD (A470) (CONNECTING ROADS) (GILWERN TO BRYNMAWR) (SIDE ROADS) ORDER 2014 (VARIATION) ORDER 201-

### CYNLLUN O'R SAFLE 2A SITE PLAN 2A