

A. WELSH LANGUAGE IMPACT ASSESSMENT

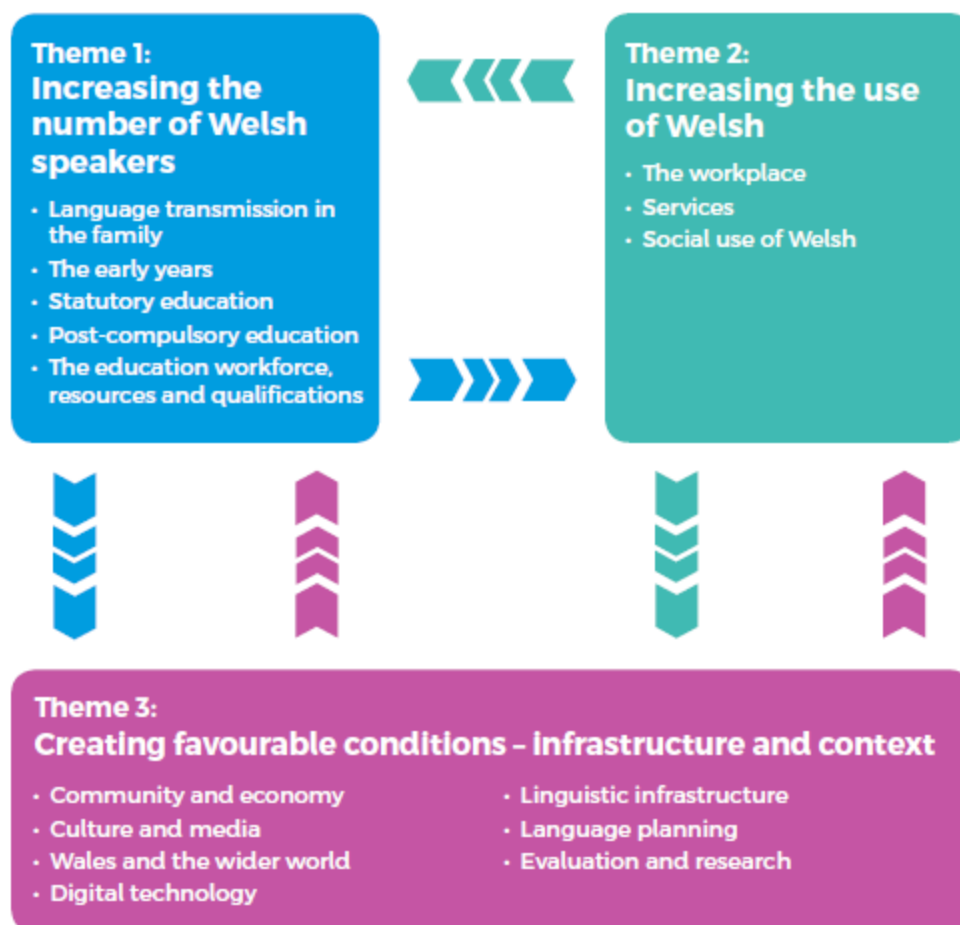
Cleared by Safonau ref 05/07/2019

Cymraeg 2050 is our national strategy for increasing the number of Welsh speakers to a million by 2050.

The Welsh Government is fully committed to the new strategy, with the target of a million speakers included in the *Taking Wales Forward* Programme for Government and *Prosperity for All: the national strategy*. A thriving Welsh language is also included in one of the 7 well-being goals in the Well-being of Future Generations (Wales) Act 2015.

We also have a statutory obligation to fully consider the effects of our work on the Welsh Language. This means that any Welsh Government policy should consider how our policies affect the language and those who speak it.

The *Cymraeg 2050* strategy has three themes:



The headings under each theme outline the scope of activities that can affect the language.

As a general rule, if your policy has the potential to impact on people, it will impact in some way on Welsh speakers and therefore on the Welsh language.

QUESTIONS

1. Welsh Language Impact Assessment reference number (completed by the Welsh Language Standards Team, email: Safonau.Standards@gov.wales): 05/07/2019
2. Does the proposal demonstrate a clear link with the Welsh Government's strategy for the Welsh language? – *Cymraeg 2050 A million Welsh speakers* and the related Work Programme for 2017-2021?

a) The amendment to s30 (Schemes for meeting losses and liabilities etc of certain health service bodies) NHS (Wales) Act is of a limited policy nature. It will enable drafting of relevant regulations.

b) The state backed GP indemnity scheme for Wales is delivered by NHS Wales. NHS Wales Shared Service Partnership - Legal and Risk Services are able to provide advice and guidance in the medium of Welsh as well as English. .

c) Advice on clinical negligence matters and service will therefore be available to Welsh Speaking GPs and other health professionals (for NHS work) through the medium of the Welsh Language. This will include access to legal advice through the medium of Welsh.

3. Describe and explain the impact of the proposal on the Welsh language, and explain how you will address these impacts in order to improve outcomes for the Welsh language. How will the proposal affect Welsh speakers of all ages (both positive and/or adverse effects)? You should note your responses to the following in your answer to this question, along with any other relevant information:
 - ♦ How will the proposal affect the sustainability of Welsh speaking communities¹ (both positive and/or adverse effects)?

¹ These can be close-knit rural communities, dispersed social networks in urban settings, and in virtual communities reaching across geographical spaces.

It will enable all Welsh speakers who wish to make claims in person for clinical negligence against GPs to make those complaints in the medium of Welsh Language.

It will enable Welsh speaking GPs to receive legal advice / defence in the medium of the Welsh Language.

- ◆ How will the proposal affect Welsh medium education and Welsh learners of all ages, including adults (both positive and/or adverse effects)?

It may indirectly encourage the availability of more Welsh language based law courses and provide an opportunity for those who have learnt Welsh to use their Welsh language skills when making claims for clinical negligence against GPs.

- ◆ How will the proposal affect services² available in Welsh (both positive and/or adverse effects)? (e.g. health and social services, transport, housing, digital, youth, infrastructure, environment, local government etc.)

Please see 2a) and 2b)

- ◆ How will you ensure that people know about services that are available in Welsh and are able to access and use them as easily as they can in English? What evidence / data have you used to inform your assessment, including evidence from Welsh speakers or Welsh language interest groups?

All GP practices hold information in the medium of Welsh and English as to how to make a complaint for clinical negligence. This information is also available on NHSWSSP Legal & Risk Services website in Welsh and English.

- ◆ What other evidence would help you to conduct a better assessment?
- ◆ How will you know if your policy is a success?

This is a limited policy nature amendment in the specific area of Schemes for meeting losses and liabilities etc of certain health service bodies. This will support the ability of the Welsh Ministers to develop policies in these areas and future proof existing schemes already established.

² The Welsh Language Strategy aims to increase the range of services offered to Welsh speakers, and to see an increase in use of Welsh-language services.

NHS (Indemnities) (Wales) Bill to amend s.30 (Schemes for meeting losses and liabilities etc of certain health bodies) NHS Wales Act 2006 Welsh Language Impact Assessment

NHS (Indemnities) (Wales) Bill to amend s.30 (Schemes for meeting losses and liabilities etc of certain health bodies) NHS Wales Act 2006 Welsh Language Impact Assessment