

100
Millimetres
0 10
DO NOT SCALE

LEGEND

EXISTING

Special Protection Areas

Registered Landscapes of Outstanding Historic Interest

Scheduled Ancient Monument

Special Area of Conservation

Ramsar Wetland of Interest

Sites of Special Scientific Interest

Ancient Woodland Inventory

Existing Waterways

Listed Buildings

Conservation Areas

OTHER

Indicative Section Lines (Refer to ES Chapter 2 Figures 2.7a-m for sections)

EXISTING FEATURES

Existing Woodland

Existing Hedgerows

Existing Scrub retained within boundary

Existing Species Rich Grassland retained within boundary

Existing Overhead Powerlines & Pylons

PRoW maintained on existing alignment

PROPOSED LANDSCAPE ELEMENTS & ENVIRONMENTAL ELEMENTS

(LE 1.1) - Amenity Grass

(LE 1.3) - Species Rich Grassland

(LE 1.4) - Rock and Scree

(LE 1.6) - Open Grassland

(LE 2.1) - Woodland

(LE 2.2) - Woodland Edge

(LE 2.4) - Linear Belts of Shrubs and Trees

(LE 2.5) - Shrubs with Intermittent Trees

(LE 2.6) - Shrubs

(LE 3.1) - Amenity Tree and Shrub Planting

(LE 3.2) - Ornamental Shrubs

(LE 4.3) - Native Species Hedgerows

(LE 4.4) - Native Hedgerows with Trees

(LE 5.1) - Individual Trees

(LE 6.3) - Reed Beds

(LE 6.4) - Marsh and Wet Grassland

(LE 7) - Hard Landscape Features

Allotments

OTHER FEATURES

PRoW diverted

Sign Gantry & Signs

Noise Barriers

Easement Outside of Highways Boundary

Essential Mitigation Boundary Fenceline

Highway Boundary Fenceline including Mammal Fencing (E3.2)

Stand alone Mammal Fencing (E3.2)

Other non motorised users (NMU) route diversion

ITS - Signal Gantry

ITS - MS4 Gantry

Replacement Reen

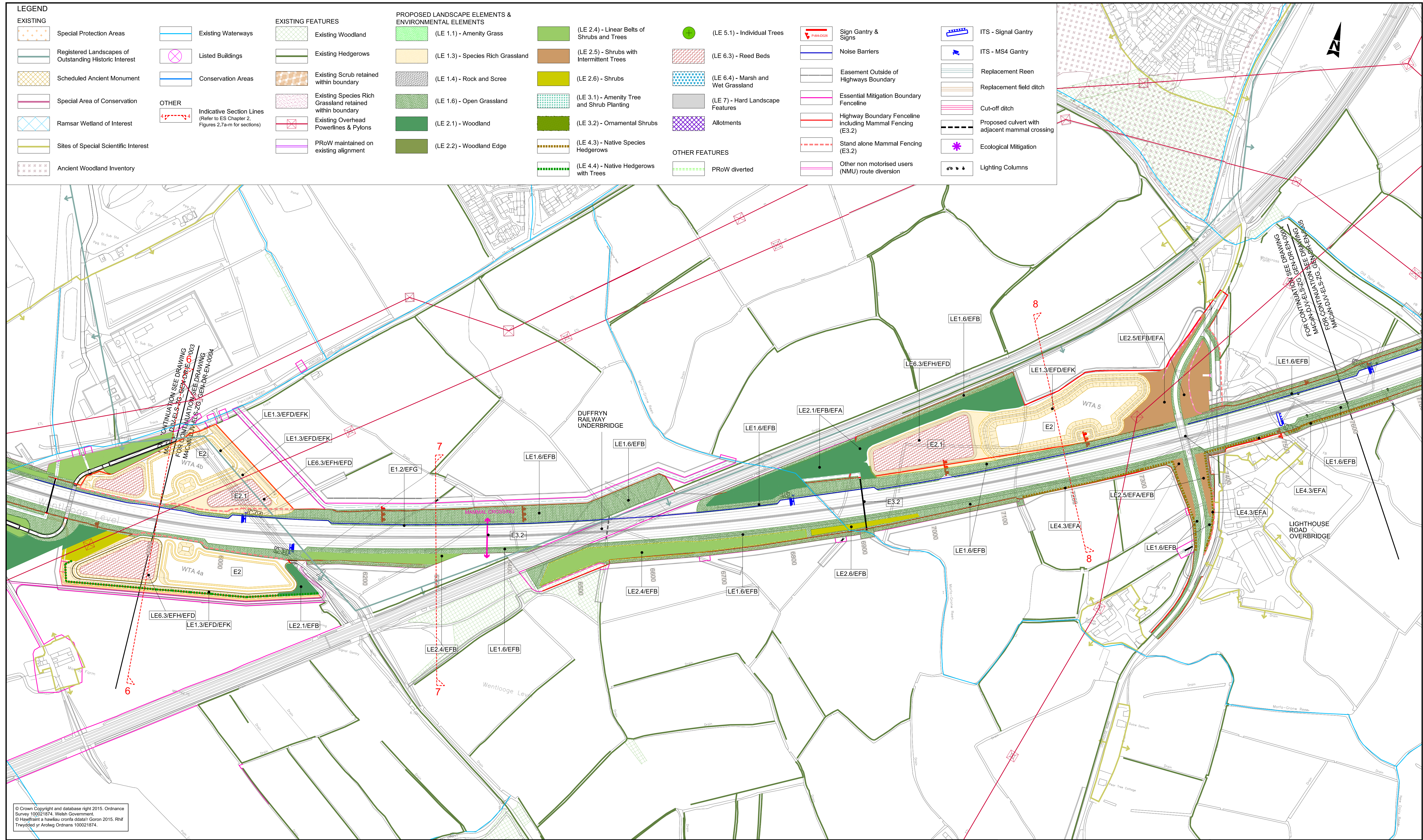
Replacement field ditch

Cut-off ditch

Proposed culvert with adjacent mammal crossing

Ecological Mitigation

Lighting Columns



© Crown Copyright and database right 2015. Ordnance Survey 100021874. Welsh Government.
© Hafwrain a hawliau corfforaidd Goron 2015. Rhif Trwydded yr Arloeg Ordians 100021874.

Environmental Functions (EF):

EFA Visual Screening

EFB Landscape Integration

EFC Enhancing the Built Environment

EFD Nature Conservation and Biodiversity

EFE Visual Amenity

EFF Heritage

EFG Auditory Amenity

EFH Water Quality

EFJ Agricultural Highway Boundary

EFK Access

Landscape Elements (LE):

LE 1.1 Amenity Grassland

LE 1.3 Species Rich Grassland

LE 1.4 Rock and Scree

LE 1.6 Open Grassland

LE 2.1 Woodland

LE 2.4 Linear Belt of Shrubs and Trees

LE 2.6 Shrubs

LE 2.5 Shrubs with Intermittent Trees

LE 3.1 Amenity Tree and Shrub Planting

LE 3.2 Ornamental Shrubs

LE 4.3 Native Species Hedgerows

LE 4.4 Native Hedgerows with Trees

LE 5.1 Individual Trees

LE 6.3 Reed Beds

LE 6.4 Marsh and Wet Grassland

LE 7 Hard Landscape

Environmental Elements:

E1 Auditory Amenity

E1.1 Noise Reducing Surface

E1.2 Noise Barrier-Built Elements

E1.3 Noise Earthworks

E2 Water Quality

E2.1 Water Pollution Control Measures

E3 Nature Conservation and Biodiversity

E3.1 Protected Species

E3.2 Ecological Protection Measures

KEY PLAN

GENERAL NOTES

1. ALL DIMENSIONS ARE IN METRES UNLESS NOTED OTHERWISE.

2. ONLY WRITTEN DIMENSIONS SHALL BE USED, DO NOT SCALE.

3. DRAWINGS TO BE READ IN CONJUNCTION WITH GENERAL ARRANGEMENT DRAWINGS 'M4CaN-DJV-HGN-ZG_GEN-DR-EN-0001-0016'

Drawing Status

Project Team

Client

Llywodraeth Cymru
Welsh Government

Suitability

Project Title

M4 CORRIDOR AROUND NEWPORT

Drawing Title

FIGURE 2.6
LANDSCAPE ENVIRONMENTAL MASTERPLAN
SHEET 4 OF 16

Scale

1:2500

Designed / Drawn

ERM

Checked

NJR

Approved

PAI

Authorised

KEN

Original Size

A1

Date

24/02/16

Date

24/02/16

Date

25/02/16

Date

29/02/16

Drawing Number

Project

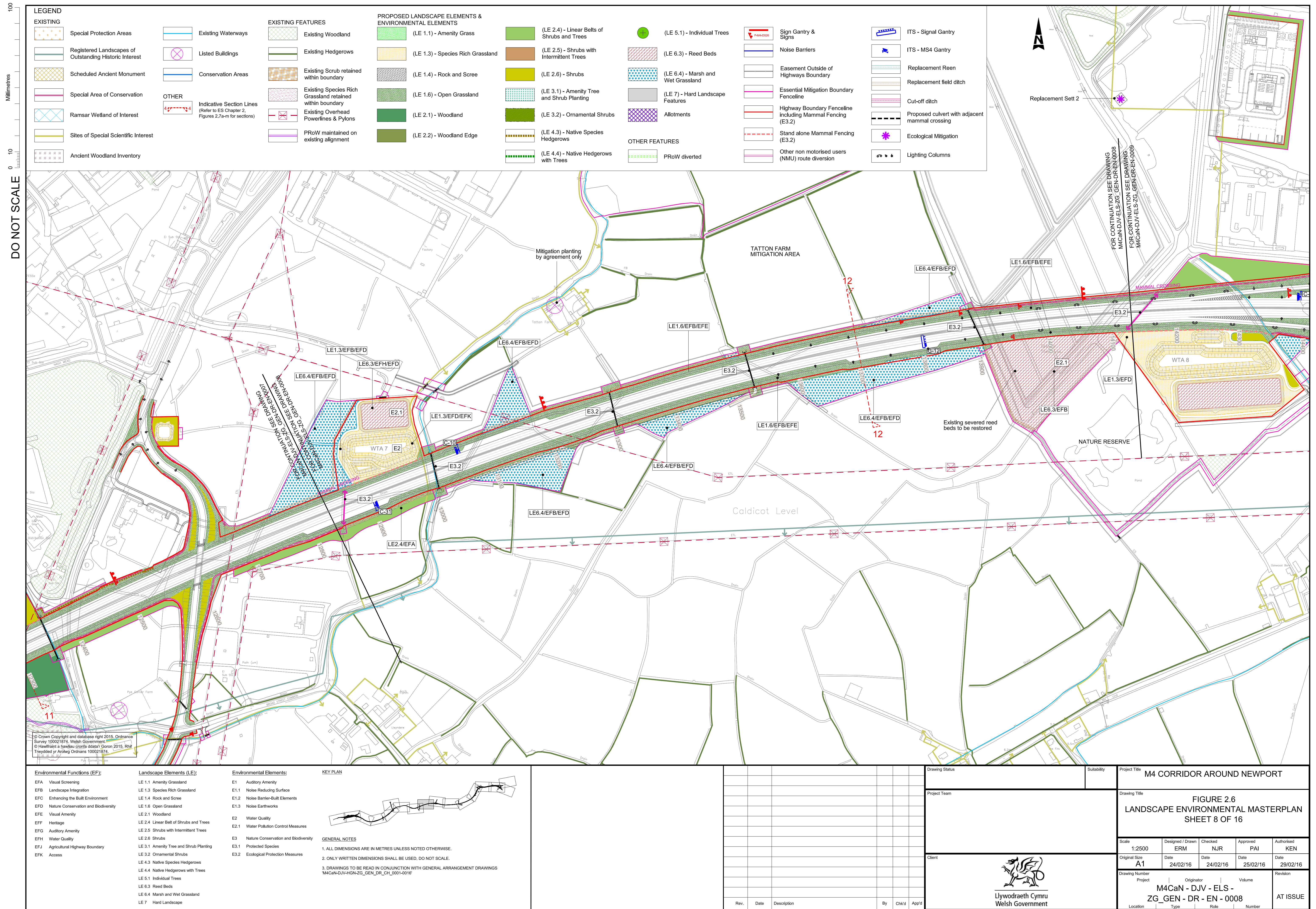
M4CaN - DJV - ELS -
ZG_GEN - DR - EN - 0004

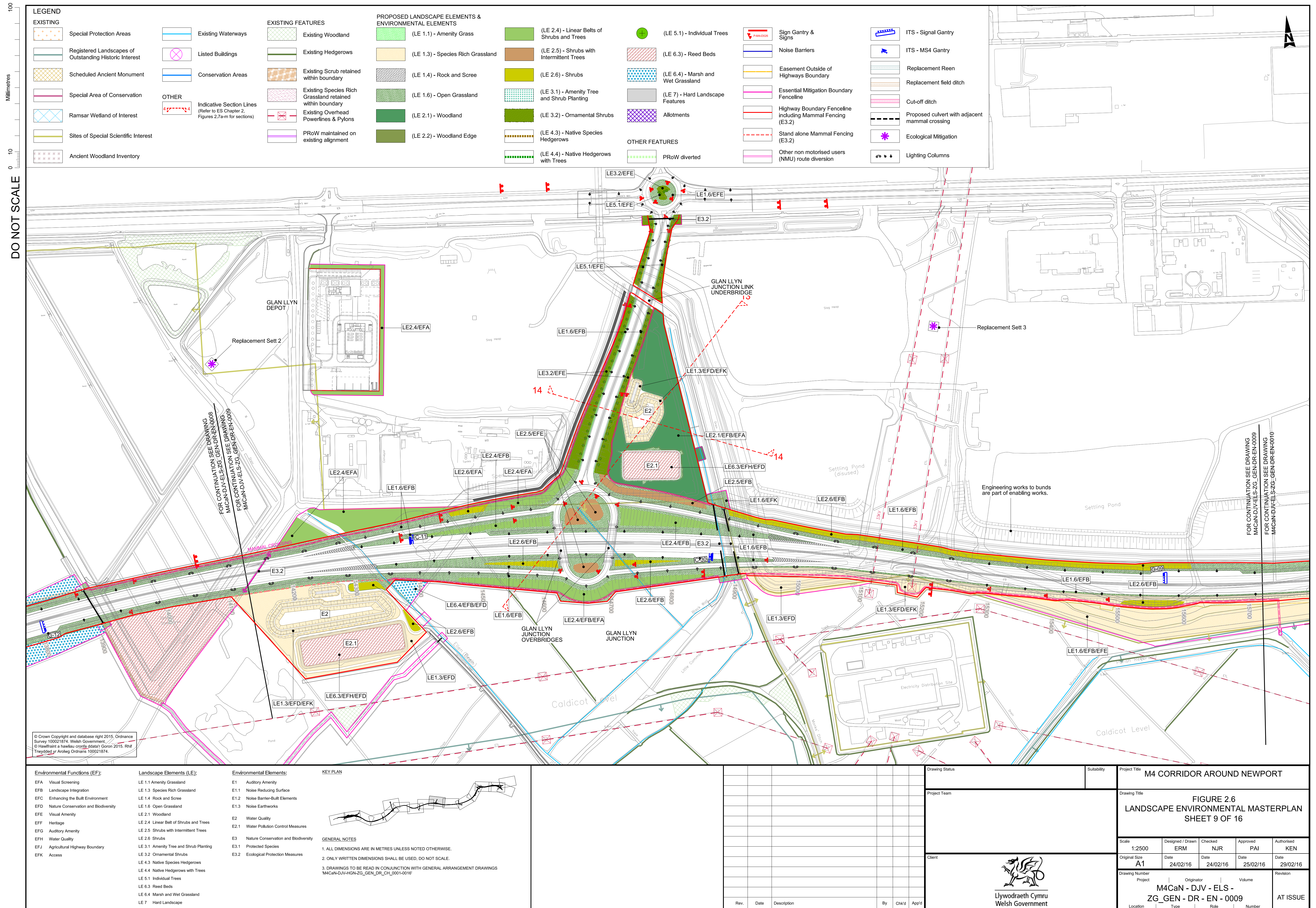
Originator

Volume

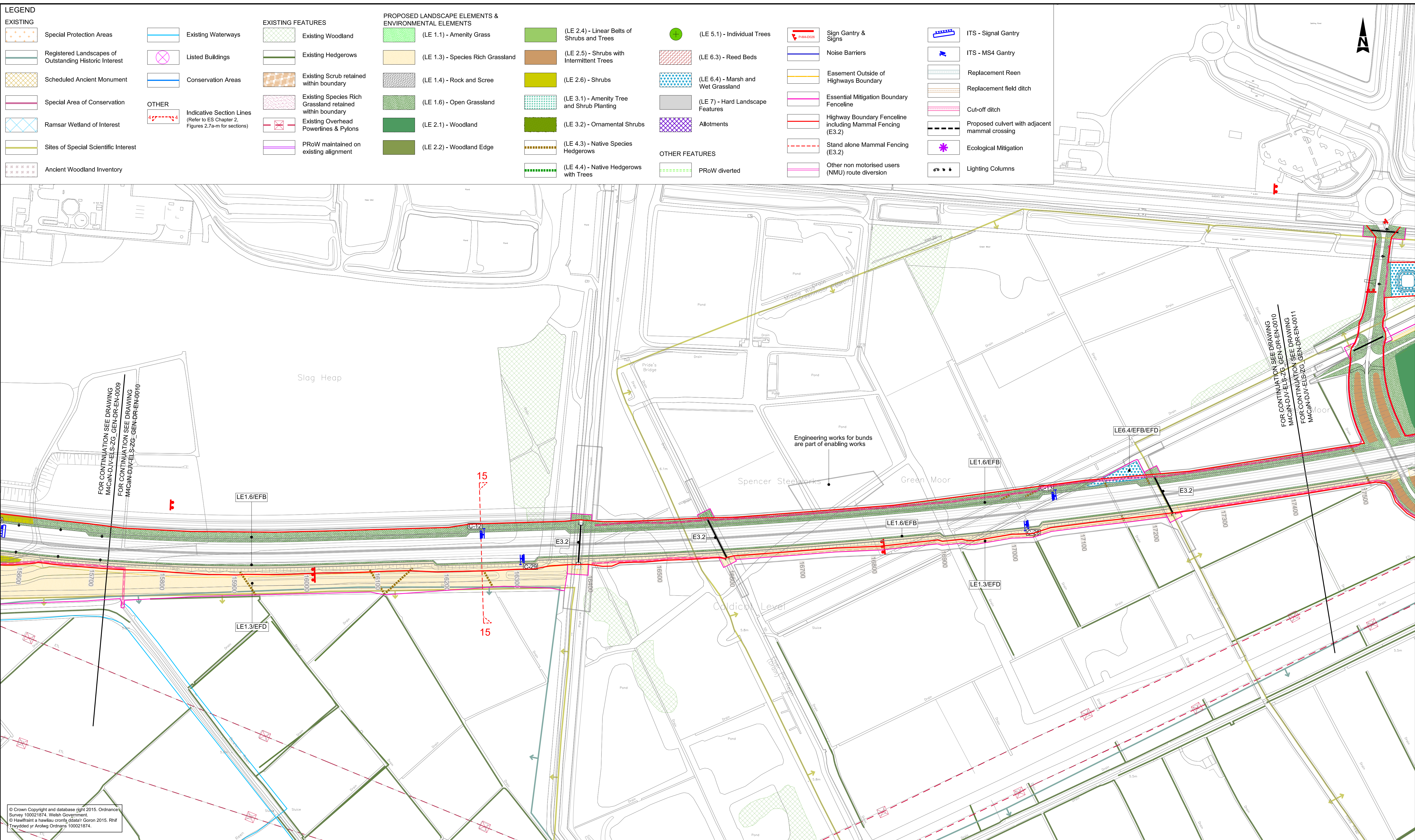
Revision

AT ISSUE

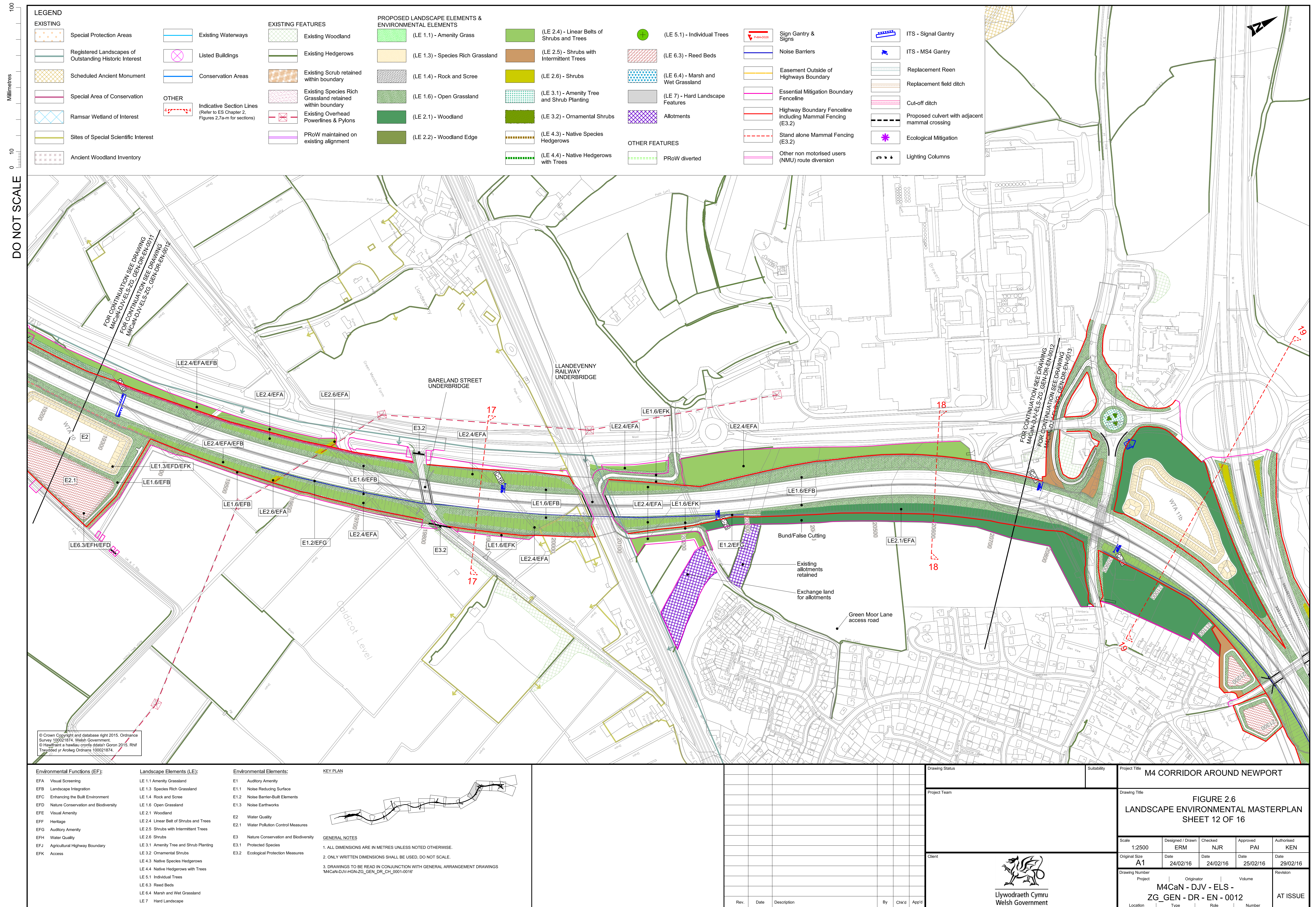


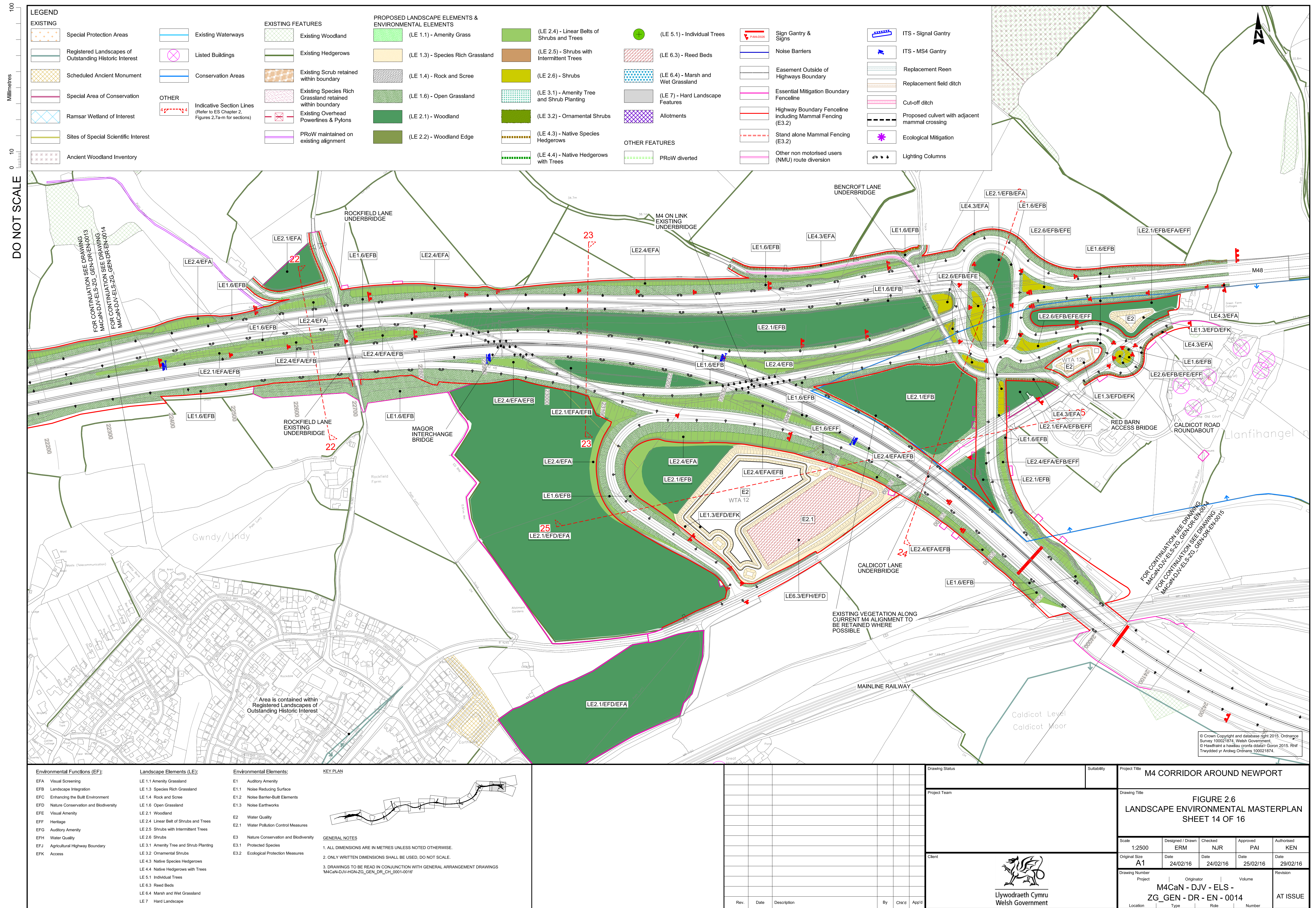


100
Millimetres
0 10
DO NOT SCALE



Environmental Functions (EF): EFA Visual Screening EFB Landscape Integration EFC Enhancing the Built Environment EFD Nature Conservation and Biodiversity EFE Visual Amenity EFE Visual Amenity EFF Heritage EFG Auditory Amenity EFH Water Quality EFJ Agricultural Highway Boundary EFK Access		Landscape Elements (LE): LE 1.1 Amenity Grassland LE 1.3 Species Rich Grassland LE 1.4 Rock and Scree LE 1.6 Open Grassland LE 2.1 Woodland LE 2.4 Linear Belt of Shrubs and Trees LE 2.5 Shrubs with Intermittent Trees LE 2.6 Shrubs LE 3.1 Amenity Tree and Shrub Planting LE 3.2 Ornamental Shrubs LE 4.3 Native Species Hedgerows LE 4.4 Native Hedgerows with Trees LE 5.1 Individual Trees LE 6.3 Reed Beds LE 6.4 Marsh and Wet Grassland LE 7 Hard Landscape			Environmental Elements: E1 Auditory Amenity E1.1 Noise Reducing Surface E1.2 Noise Barrier-Built Elements E1.3 Noise Earthworks E2 Water Quality E2.1 Water Pollution Control Measures E3 Nature Conservation and Biodiversity E3.1 Protected Species E3.2 Ecological Protection Measures		KEY PLAN  GENERAL NOTES 1. ALL DIMENSIONS ARE IN METRES UNLESS NOTED OTHERWISE. 2. ONLY WRITTEN DIMENSIONS SHALL BE USED, DO NOT SCALE. 3. DRAWINGS TO BE READ IN CONJUNCTION WITH GENERAL ARRANGEMENT DRAWINGS 'M4CaN-DJV-HGN-ZG_GEN-DR_CH_0001-0016'		Drawing Status Project Team Client  Llywodraeth Cymru Welsh Government		Suitability Project Title M4 CORRIDOR AROUND NEWPORT Drawing Title FIGURE 2.6 LANDSCAPE ENVIRONMENTAL MASTERPLAN SHEET 10 OF 16 Scale 1:2500 Original Size A1 Drawing Number Project M4CaN - DJV - ELS - ZG_GEN - DR - EN - 0010 Location Type Role Number		Designed / Drawn ERM Date 24/02/16 Checked NJR Date 24/02/16 Approved PAI Date 25/02/16 Authorised KEN Date 29/02/16 Revision AT ISSUE	
---	--	---	--	--	--	--	---	--	--	--	---	--	---	--





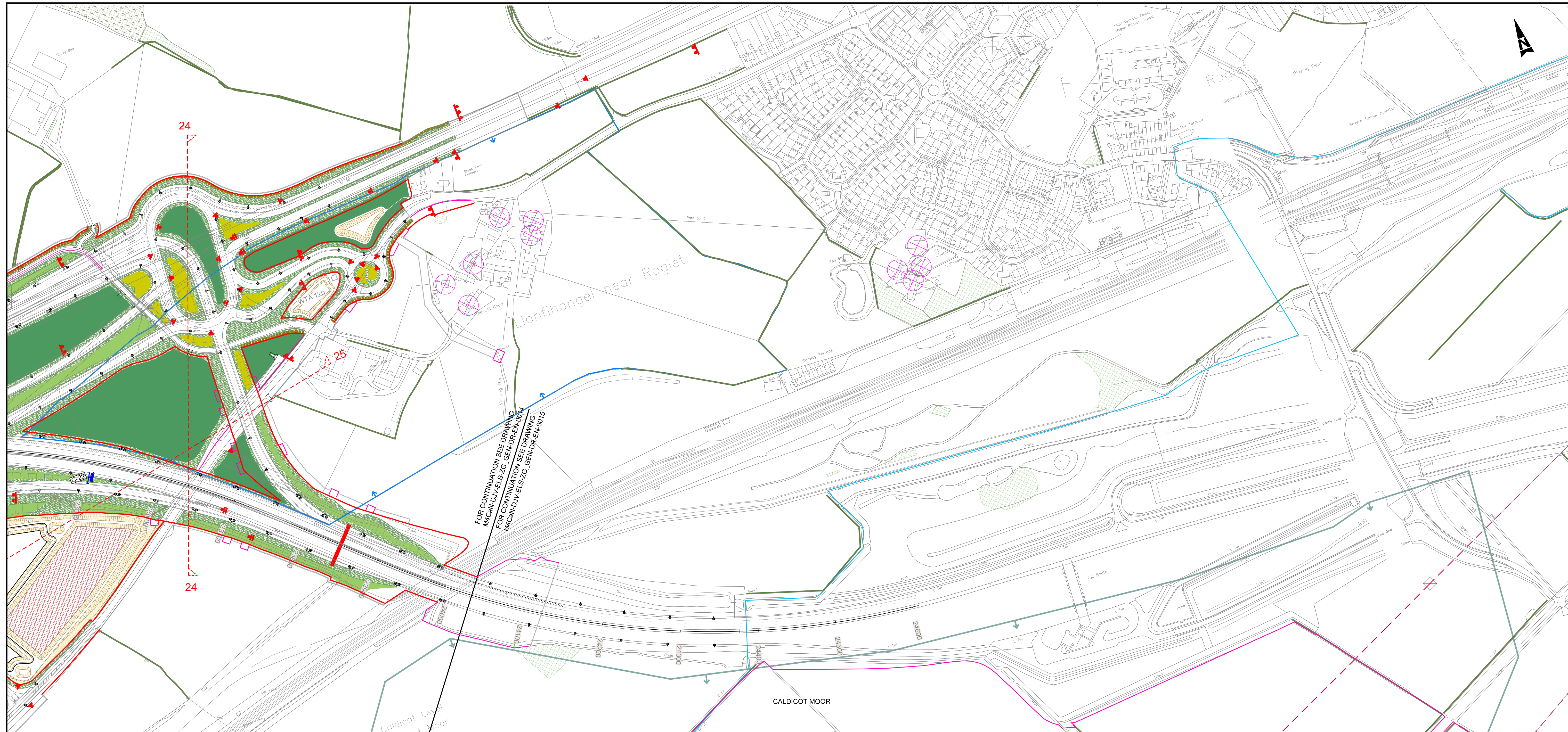
DO NOT SCALE

Millimetres

0

10

100



LEGEND

EXISTING

Special Protection Areas

Registered Landscapes of Outstanding Historic Interest

Scheduled Ancient Monument

Special Area of Conservation

Ramsar Wetland of InterestSites of Special Scientific InterestExisting WaterwaysConservation Areas

OTHER

Indicative Section Lines
(Refer to ES Chapter 2, Figures 2.7 a-m for sections)

EXISTING FEATURES

Existing Woodland

PROPOSED LANDSCAPE ELEMENTS & ENVIRONMENTAL ELEMENTS

(LE 1.1) - Amenity Grass

OTHER FEATURES

PRoW divertedSign Gantry & Signs

Environmental Functions (EF):

EFA Visual Screening

EFB Landscape Integration

EFC Enhancing the Built Environment

EFD Nature Conservation and Biodiversity

EFE Visual Amenity

EFF Heritage

EFG Auditory Amenity

EFH Water Quality

EFJ Agricultural Highway Boundary

EFK Access

Landscape Elements (LE):

LE 1.1 Amenity Grassland

LE 1.3 Species Rich Grassland

LE 1.4 Rock and Scree

LE 1.6 Open Grassland

LE 2.1 Woodland

LE 2.4 Linear Belt of Shrubs and Trees

LE 2.5 Shrubs with Intermittent Trees

LE 2.6 Shrubs

LE 3.1 Amenity Tree and Shrub Planting

LE 3.2 Ornamental Shrubs

LE 4.3 Native Species Hedgerows

LE 4.4 Native Hedgerows with Trees

LE 5.1 Individual Trees

LE 6.3 Reed Beds

LE 6.4 Marsh and Wet Grassland

LE 7 Hard Landscape

Environmental Elements:

E1 Auditory Amenity

E1.1 Noise Reducing Surface

E1.2 Noise Barrier-Built Elements

E1.3 Noise Earthworks

E2 Water Quality

E2.1 Water Pollution Control Measures

E3 Nature Conservation and Biodiversity

E3.1 Protected Species

E3.2 Ecological Protection Measures

KEY PLAN

GENERAL NOTES

1. ALL DIMENSIONS ARE IN METRES UNLESS NOTED OTHERWISE.

2. ONLY WRITTEN DIMENSIONS SHALL BE USED, DO NOT SCALE.

3. DRAWINGS TO BE READ IN CONJUNCTION WITH GENERAL ARRANGEMENT DRAWINGS 'M4CaN-DJV-HGN-ZG_GEN_DR_CH_0001-0016'

Rev.

Date

Description

By

Chk'd

App'd

Drawing Status

Project Team

Client

Suitability

Project Title

Drawing Title

Scale

Original Size

Drawing Number

Project

Location

Designed / Drawn

Checked

Approved

Authorised

Date

Date

Date

Date

Revision

ERM

NJR

PAI

KEN

24/02/16

24/02/16

25/02/16

29/02/16

AT ISSUE

M4CaN - DJV - ELS - ZG_GEN - DR - EN - 0015

AT ISSUE

Llywodraeth Cymru

Welsh Government

100
Millimetres
0 10
DO NOT SCALE

LEGEND

EXISTING

Special Protection Areas

Registered Landscapes of Outstanding Historic Interest

Scheduled Ancient Monument

Special Area of Conservation

Ramsar Wetland of Interest

Sites of Special Scientific Interest

Ancient Woodland Inventory

Existing Waterways

Listed Buildings

Conservation Areas

OTHER

Indicative Section Lines
(Refer to ES Chapter 2, Figures 2.7a-m for sections)

EXISTING FEATURES

Existing Woodland

Existing Hedgerows

Existing Scrub retained within boundary

Existing Species Rich Grassland retained within boundary

Existing Overhead Powerlines & Pylons

PRoW maintained on existing alignment

PROPOSED LANDSCAPE ELEMENTS & ENVIRONMENTAL ELEMENTS

(LE 1.1) - Amenity Grass

(LE 1.3) - Species Rich Grassland

(LE 1.4) - Rock and Scree

(LE 1.6) - Open Grassland

(LE 2.1) - Woodland

(LE 2.2) - Woodland Edge

(LE 2.4) - Linear Belts of Shrubs and Trees

(LE 2.5) - Shrubs with Intermittent Trees

(LE 2.6) - Shrubs

(LE 3.1) - Amenity Tree and Shrub Planting

(LE 3.2) - Ornamental Shrubs

(LE 4.3) - Native Species Hedgerows

(LE 4.4) - Native Hedgerows with Trees

(LE 5.1) - Individual Trees

(LE 6.3) - Reed Beds

(LE 6.4) - Marsh and Wet Grassland

(LE 7) - Hard Landscape Features

Allotments

OTHER FEATURES

PRoW diverted

Sign Gantry & Signs

Noise Barriers

Easement Outside of Highways Boundary

Essential Mitigation Boundary Fenceline

Highway Boundary Fenceline including Mammal Fencing (E3.2)

Stand alone Mammal Fencing (E3.2)

Other non motorised users (NMU) route diversion

ITS - Signal Gantry

ITS - MS4 Gantry

Replacement Reen

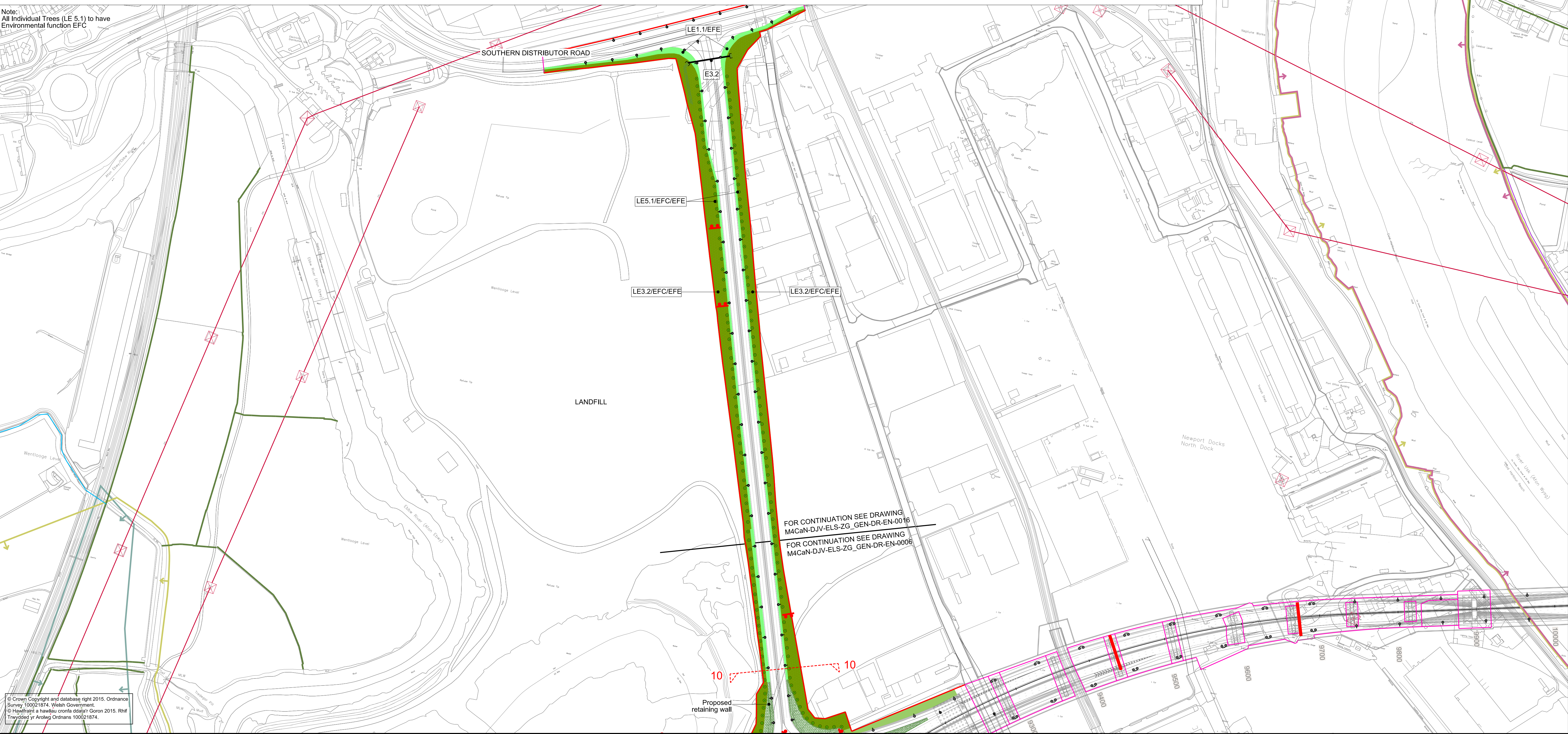
Replacement field ditch

Cut-off ditch

Proposed culvert with adjacent mammal crossing

Ecological Mitigation

Lighting Columns



<div>Environmental Functions (EF):</div> <div>EFA Visual Screening</div> <div>EFB Landscape Integration</div> <div>EFC Enhancing the Built Environment</div> <div>EFD Nature Conservation and Biodiversity</div> <div>EFE Visual Amenity</div> <div>EFF Heritage</div> <div>EFG Auditory Amenity</div> <div>EFH Water Quality</div> <div>EFJ Agricultural Highway Boundary</div> <div>EFK Access</div>	<div>Landscape Elements (LE):</div> <div>LE 1.1 Amenity Grassland</div> <div>LE 1.3 Species Rich Grassland</div> <div>LE 1.4 Rock and Scree</div> <div>LE 1.6 Open Grassland</div> <div>LE 2.1 Woodland</div> <div>LE 2.4 Linear Belt of Shrubs and Trees</div> <div>LE 2.5 Shrubs with Intermittent Trees</div> <div>LE 2.6 Shrubs</div> <div>LE 3.1 Amenity Tree and Shrub Planting</div> <div>LE 3.2 Ornamental Shrubs</div> <div>LE 4.3 Native Species Hedgerows</div> <div>LE 4.4 Native Hedgerows with Trees</div> <div>LE 5.1 Individual Trees</div> <div>LE 6.3 Reed Beds</div> <div>LE 6.4 Marsh and Wet Grassland</div> <div>LE 7 Hard Landscape</div>	<div>Environmental Elements:</div> <div>E1 Auditory Amenity</div> <div>E1.1 Noise Reducing Surface</div> <div>E1.2 Noise Barrier-Built Elements</div> <div>E1.3 Noise Earthworks</div> <div>E2 Water Quality</div> <div>E2.1 Water Pollution Control Measures</div> <div>E3 Nature Conservation and Biodiversity</div> <div>E3.1 Protected Species</div> <div>E3.2 Ecological Protection Measures</div>	<div>KEY PLAN</div>	<div>GENERAL NOTES</div> <div>1. ALL DIMENSIONS ARE IN METRES UNLESS NOTED OTHERWISE.</div> <div>2. ONLY WRITTEN DIMENSIONS SHALL BE USED, DO NOT SCALE.</div> <div>3. DRAWINGS TO BE READ IN CONJUNCTION WITH GENERAL ARRANGEMENT DRAWINGS 'M4CaN-DJV-HGN-ZG_GEN-DR_CH_0001-0016'</div>	<div>Rev.</div> <div>Date</div> <div>Description</div> <div>By</div> <div>Chk'd</div> <div>App'd</div>	<div>Drawing Status</div> <div>Project Team</div> <div>Client</div> <div></div> <div>Llywodraeth Cymru Welsh Government</div>	<div>Suitability</div> <div>Project Title</div> <div>M4 CORRIDOR AROUND NEWPORT</div> <div>Drawing Title</div> <div>FIGURE 2.6 LANDSCAPE ENVIRONMENTAL MASTERPLAN SHEET 16 OF 16</div> <div><div>Scale</div><div>1:2500</div><div>Original Size</div><div>A1</div><div>Drawing Number</div><div>Project</div><div>M4CaN - DJV - ELS - ZG_GEN - DR - EN - 0016</div><div>Location</div><div>Type</div><div>Rate</div><div>Number</div></div> <div><div>Designed / Drawn</div><div>ERM</div><div>Checked</div><div>NJR</div><div>Approved</div><div>PAI</div><div>Authorised</div><div>KEN</div></div> <div><div>Date</div><div>24/02/16</div><div>Date</div><div>24/02/16</div><div>Date</div><div>25/02/16</div><div>Date</div><div>29/02/16</div></div> <div><div>Originator</div><div>Volume</div><div>Revision</div><div>AT ISSUE</div></div>
--	--	---	---------------------	--	--	---	--