

Local Authority Financial Indicators, Wales

2018-19

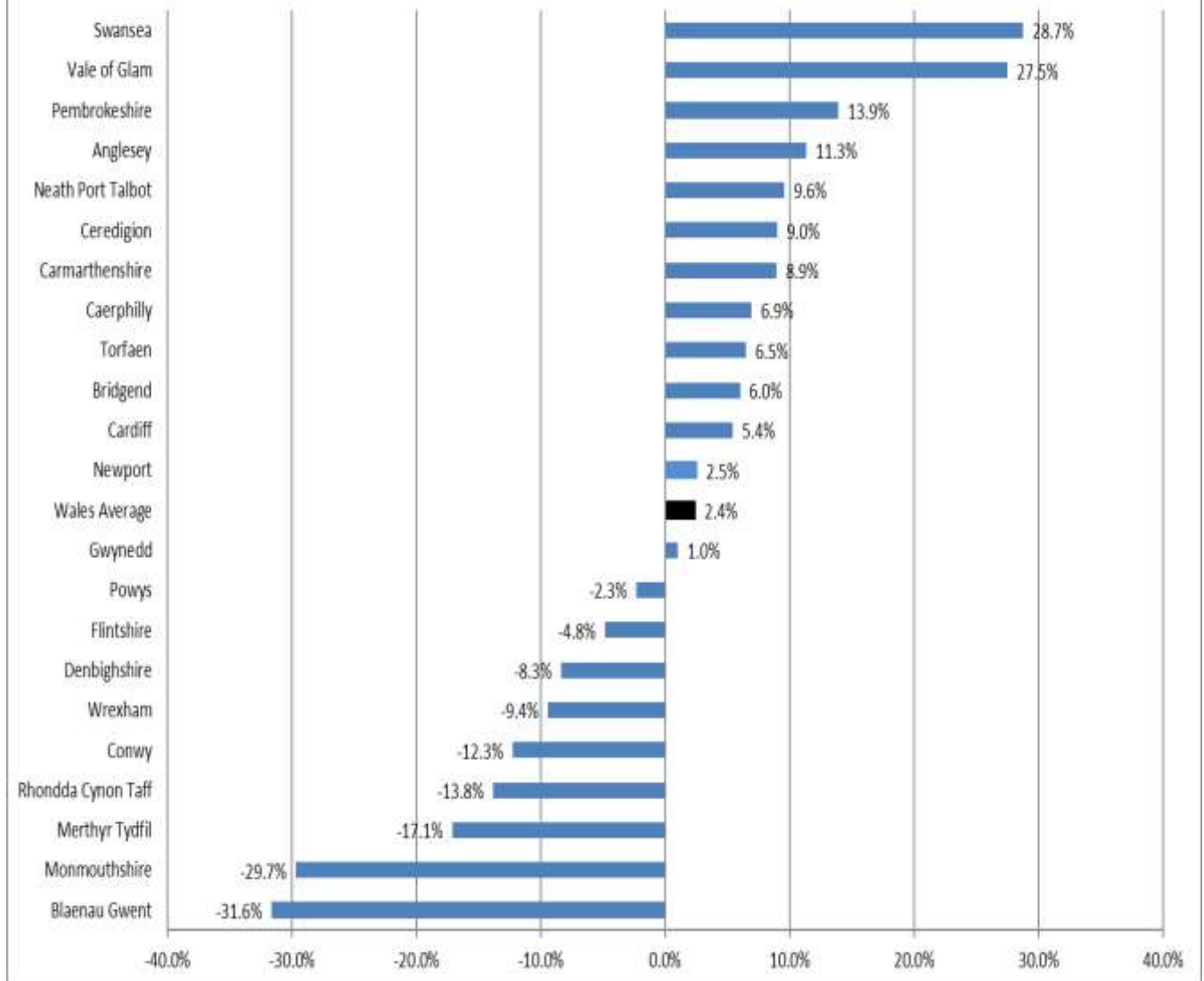
January 2020

Introduction

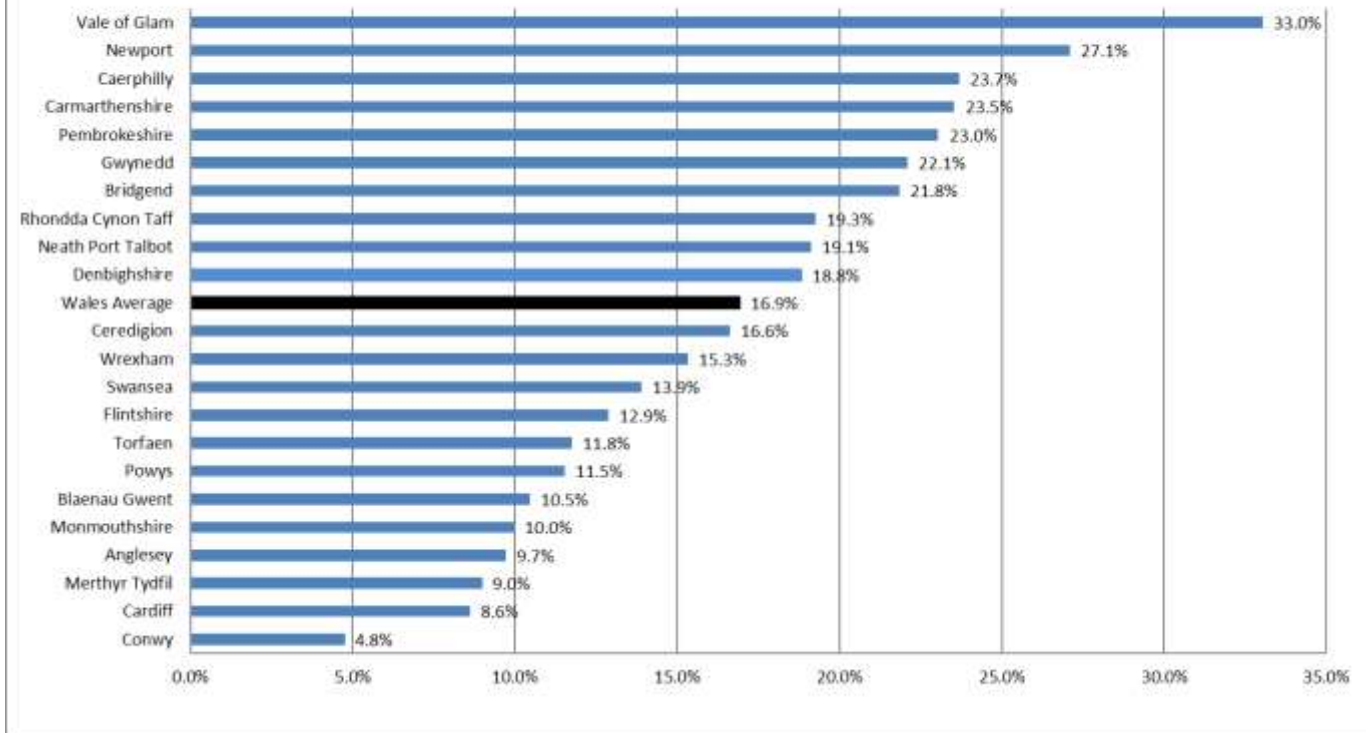
This report sets out the latest position of financial indicators for 2018-19.

Financial Indicators								
2018-19	Working Capital as a percentage of Gross Revenue Expenditure	Useable Reserves as a Percentage of Gross Revenue Expenditure including General, Earmarked and Capital Receipts Reserves	Earmarked Reserves as a Percentage of Gross Revenue Expenditure	Number of Days of Gross Revenue Expenditure covered by Unallocated / General Reserves	Ratio of Long Term Borrowing Payments to Long Term Assets	Ratio of Long Term Borrowing Charges to Taxation & Non Specific Grants	Council Tax as a Percentage of the Total Local Tax Revenue including Non-Specific Grant Income	Useable Reserves as a Percentage of Gross Revenue Expenditure including General and Earmarked Reserves
	%	%	%	Days	Ratio	Ratio	%	%
Anglesey	11.3%	9.7%	5.4%	13.3	0.31	0.91	31.7%	9.0%
Gwynedd	1.0%	22.1%	18.9%	9.0	0.24	0.39	30.9%	21.3%
Conwy	-12.3%	4.8%	3.3%	3.2	0.38	0.72	22.4%	4.2%
Denbighshire	-8.3%	18.8%	13.0%	11.5	0.38	0.89	27.3%	16.1%
Flintshire	-4.8%	12.9%	3.7%	15.7	0.36	0.92	28.0%	8.0%
Wrexham	-9.4%	15.3%	6.9%	8.8	0.32	1.35	25.2%	9.3%
Powys	-2.3%	11.5%	6.1%	11.1	0.36	1.06	31.4%	9.1%
Ceredigion	9.0%	16.6%	9.9%	12.0	0.35	0.81	30.2%	13.2%
Pembrokeshire	13.9%	23.0%	16.3%	9.7	0.29	0.82	27.3%	18.9%
Carmarthenshire	8.9%	23.5%	19.7%	8.9	0.30	1.02	27.5%	22.1%
Swansea	28.7%	13.9%	10.6%	6.1	0.37	1.19	24.7%	12.2%
Neath Port Talbot	9.6%	19.1%	11.2%	21.8	0.42	0.93	27.1%	17.1%
Bridgend	6.0%	21.8%	14.0%	9.4	0.21	0.39	30.9%	16.6%
Vale of Glam	27.5%	33.0%	22.9%	17.6	0.24	0.62	30.0%	27.7%
Rhondda Cynon Taff	-13.8%	19.3%	17.0%	6.2	0.22	0.47	24.4%	18.7%
Merthyr Tydfil	-17.1%	9.0%	5.9%	11.2	0.24	0.52	21.9%	9.0%
Caerphilly	6.9%	23.7%	17.7%	13.2	0.26	0.84	21.6%	21.3%
Blaenau Gwent	-31.6%	10.5%	3.3%	12.8	0.32	0.56	24.8%	6.8%
Torfaen	6.5%	11.8%	3.8%	13.2	0.36	0.59	25.1%	7.4%
Monmouthshire	-29.7%	10.0%	3.6%	14.1	0.28	0.60	39.3%	7.5%
Newport	2.5%	27.1%	23.4%	5.1	0.36	0.67	22.3%	24.8%
Cardiff	5.4%	8.6%	5.9%	6.3	0.38	1.07	29.0%	7.6%
Wales Average	2.4%	16.9%	11.8%	10.1	0.32	0.82	27.1%	14.5%

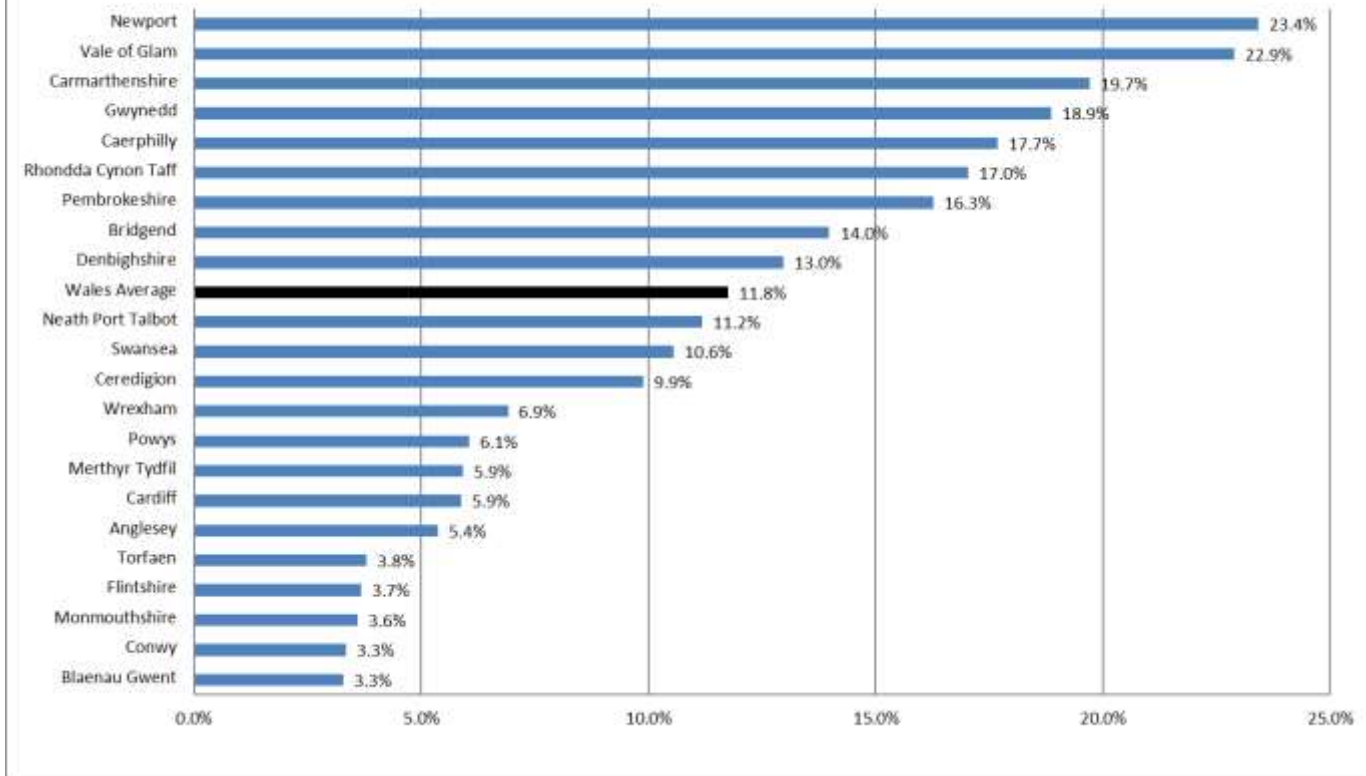
Working Capital as a percentage of Gross Revenue Expenditure at 31 March 2019



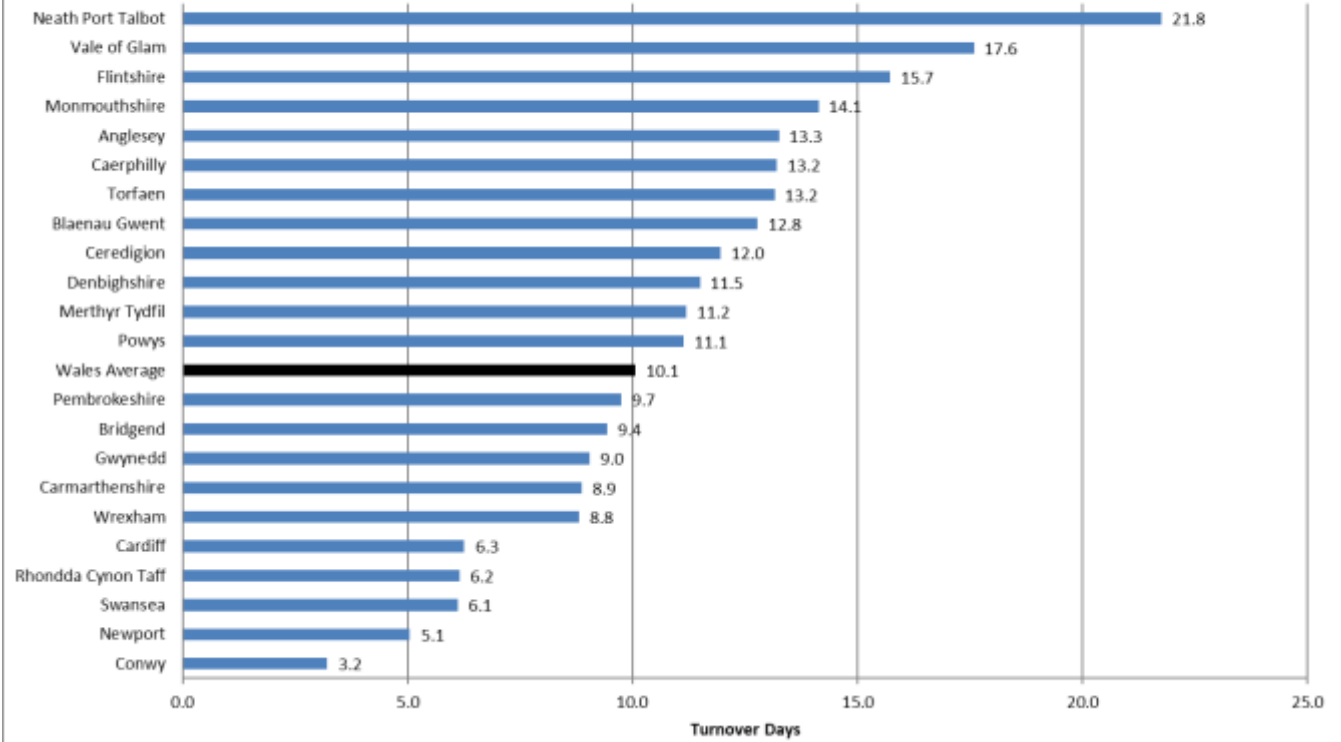
Useable Reserves as a Percentage of Gross Revenue Expenditure (including General / Unallocated Reserves, Capital Receipts Reserves and Other Earmarked Reserves) at 31 March 2019



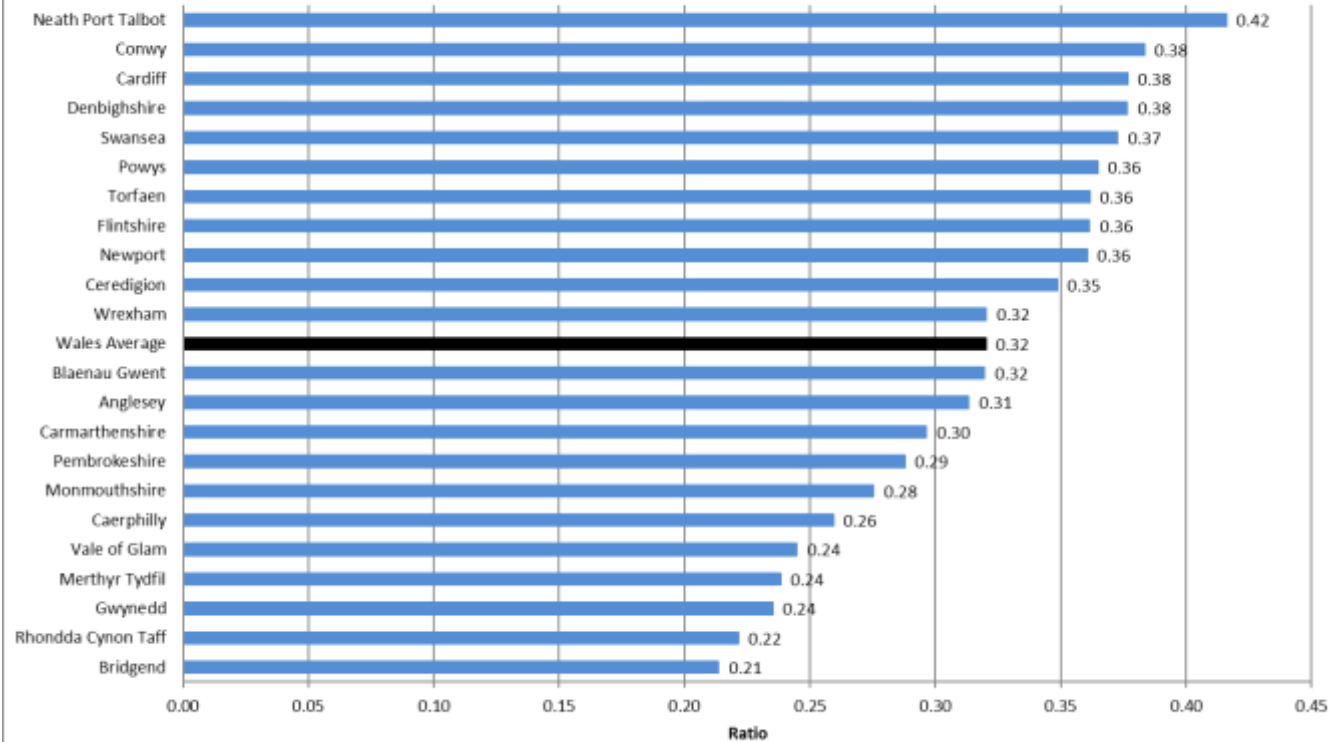
Earmarked Reserves as a Percentage of Gross Revenue Expenditure at 31 March 2019



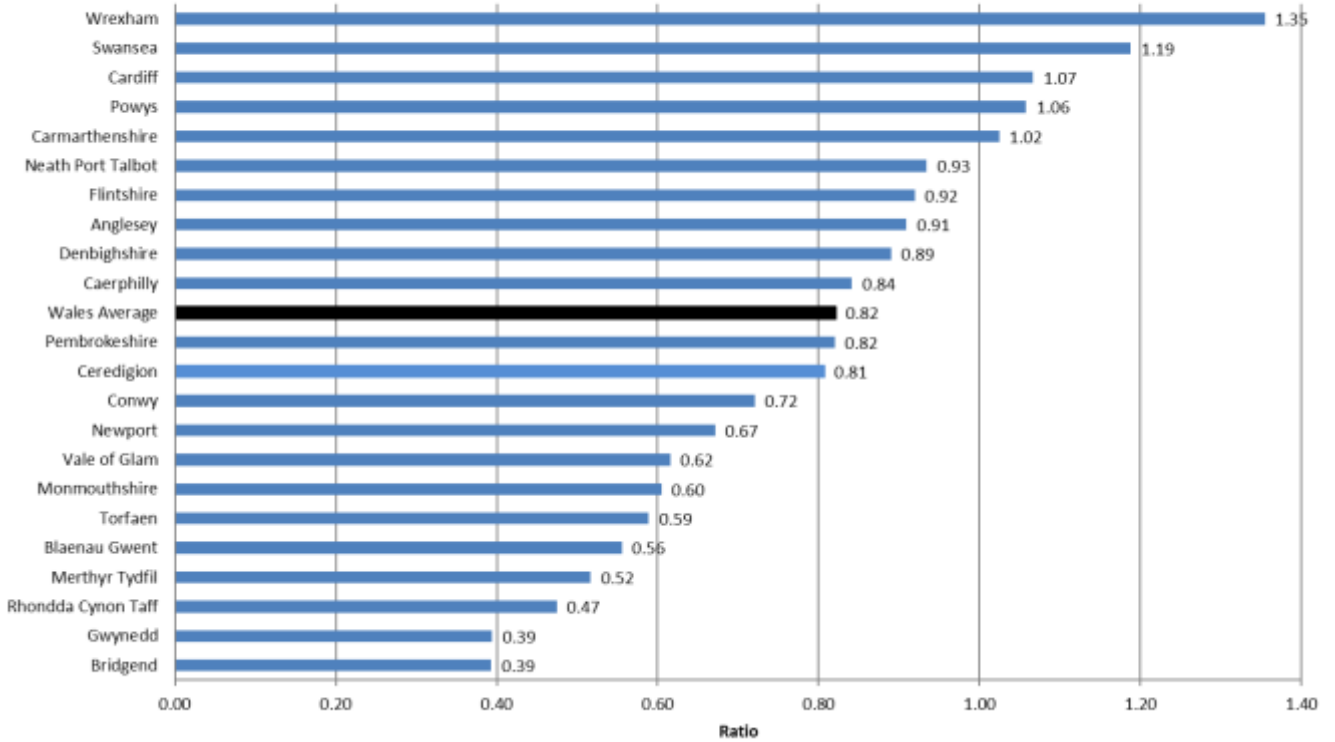
Number of Days of Gross Revenue Expenditure covered by Unallocated / General Reserves at 31 March 2019



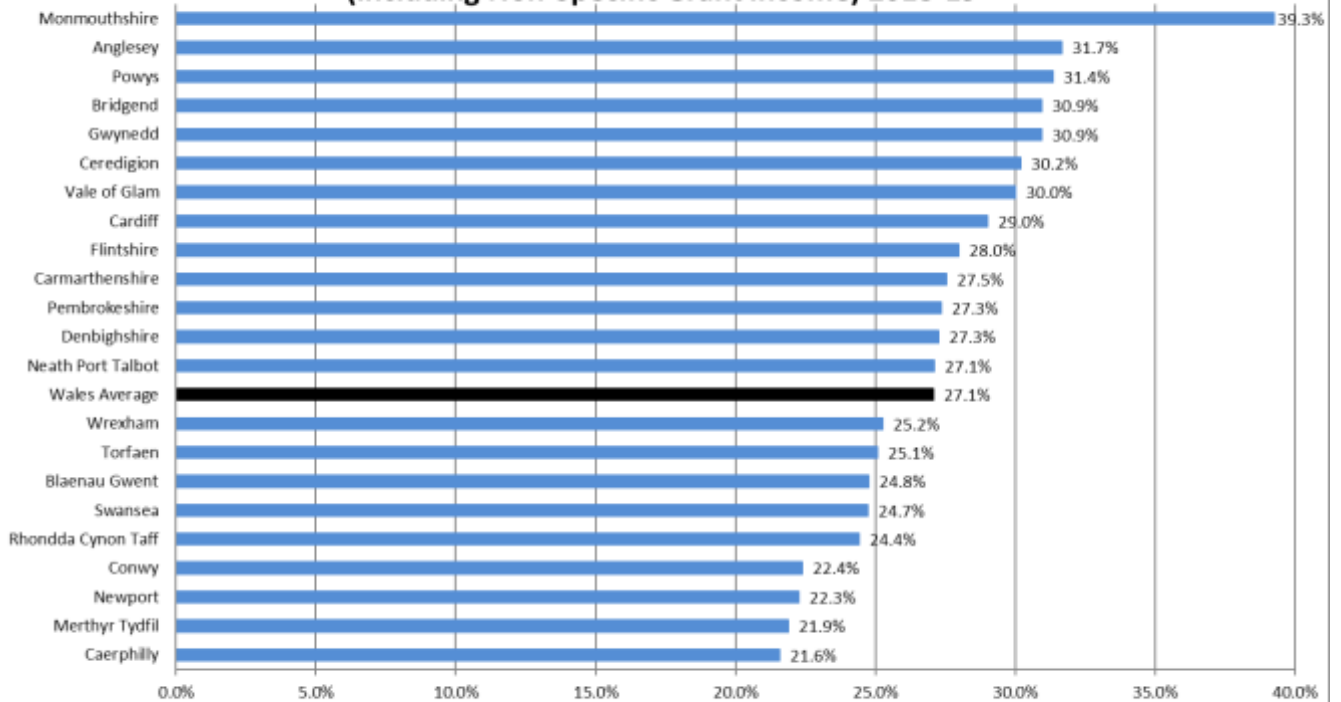
Ratio of Long Term Borrowing Payments to Long Term Assets at 31 March 2019



Ratio of Long Term Borrowing Charges to Taxation & Non Specific Grants 2018-19



Council Tax as a Percentage of the Total Local Tax Revenue (including Non-Specific Grant Income) 2018-19



**Useable Reserves as a Percentage of Gross Revenue Expenditure
(including General and Earmarked Reserves) at 31 March 2019**

