

Data Cymru update – WSLC February 2021

COVID-19 data support

Over the last few months, we have continued to support both local and national government by collecting data to help them understand the impact of the pandemic and inform policy. Our current data collections include:

- Local authority public protection enforcement activity;
- Local authority business grant allocation; and
- Eligibility for and provision of Free School Meals (FSM).

While this data is not currently in the public domain, we, along with our partners, are considering ways to make the data more widely available, where appropriate. Watch this space!

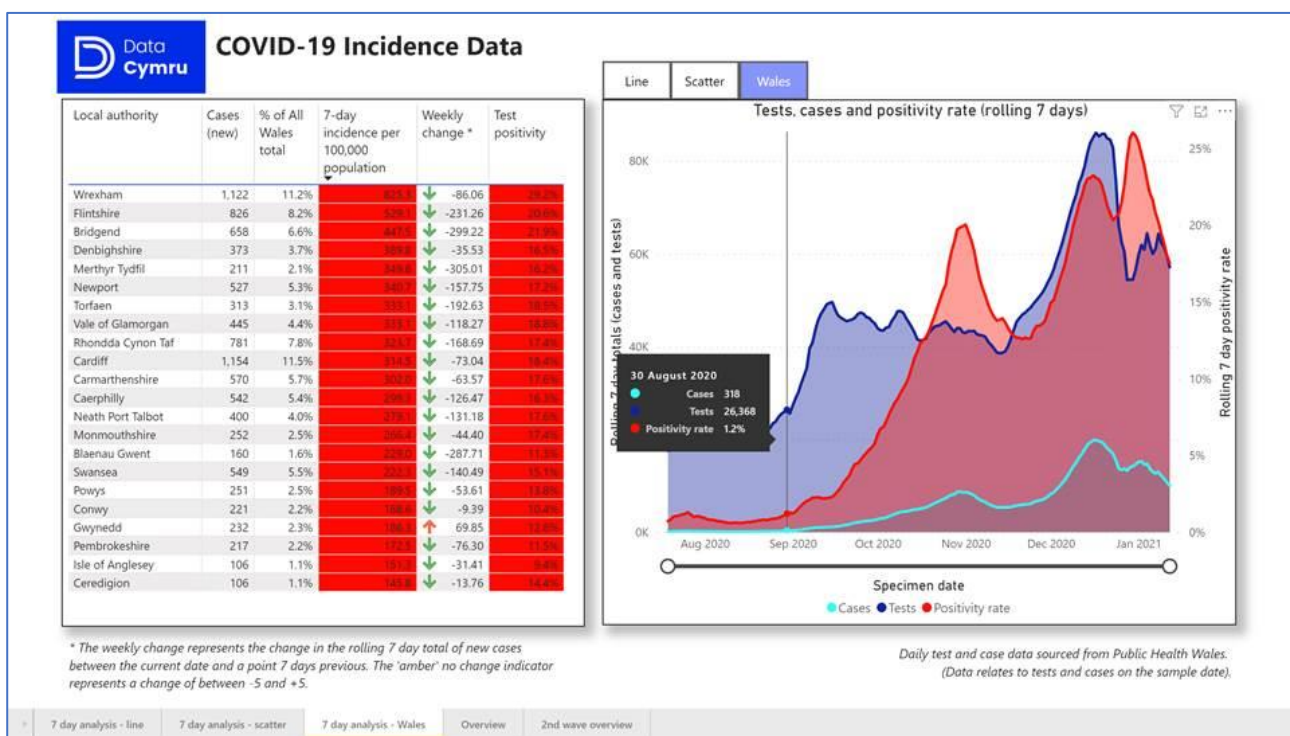
COVID-19 monitoring dashboard

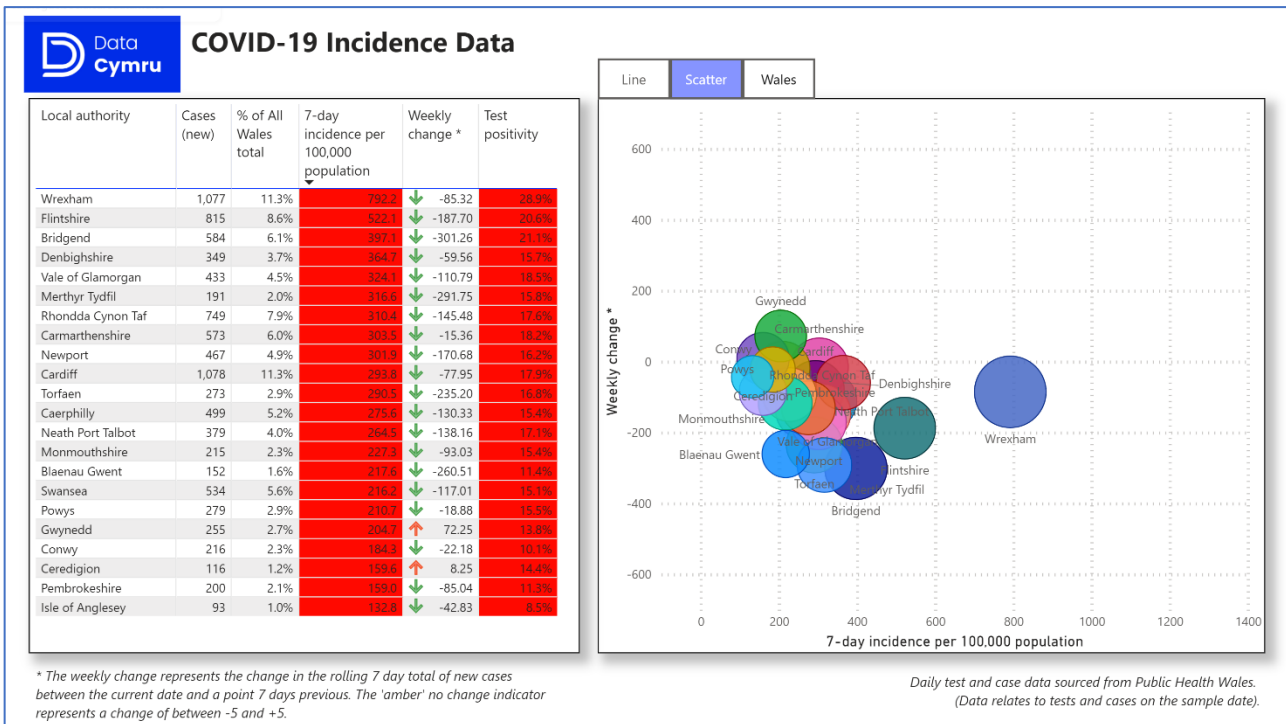
Our COVID-19 dashboards source data directly from Public Health Wales and the Office for National Statistics on a regular basis.

Incidence dashboard

Our incidence dashboard reports the number of COVID-19 cases, number of tests, and the positivity rate by local authority. We update data on a daily basis, including weekends.

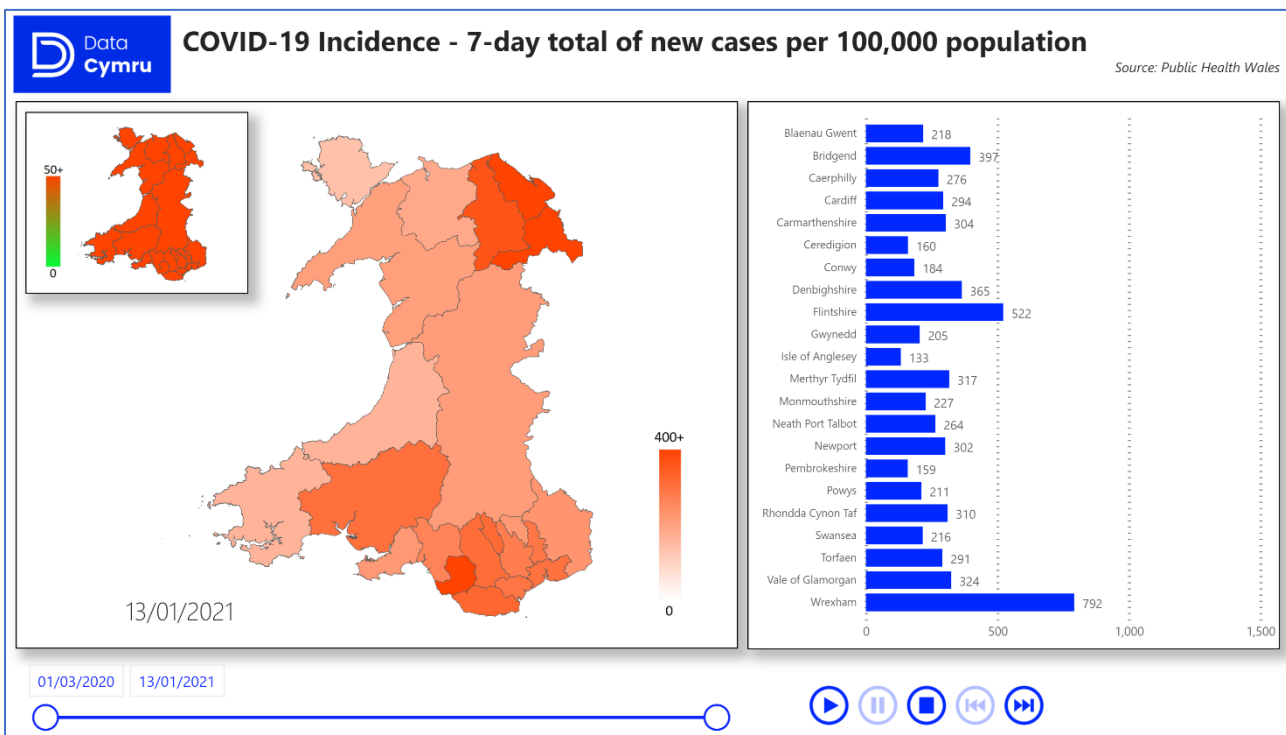
<https://www.data.cymru/covid19/incidence>





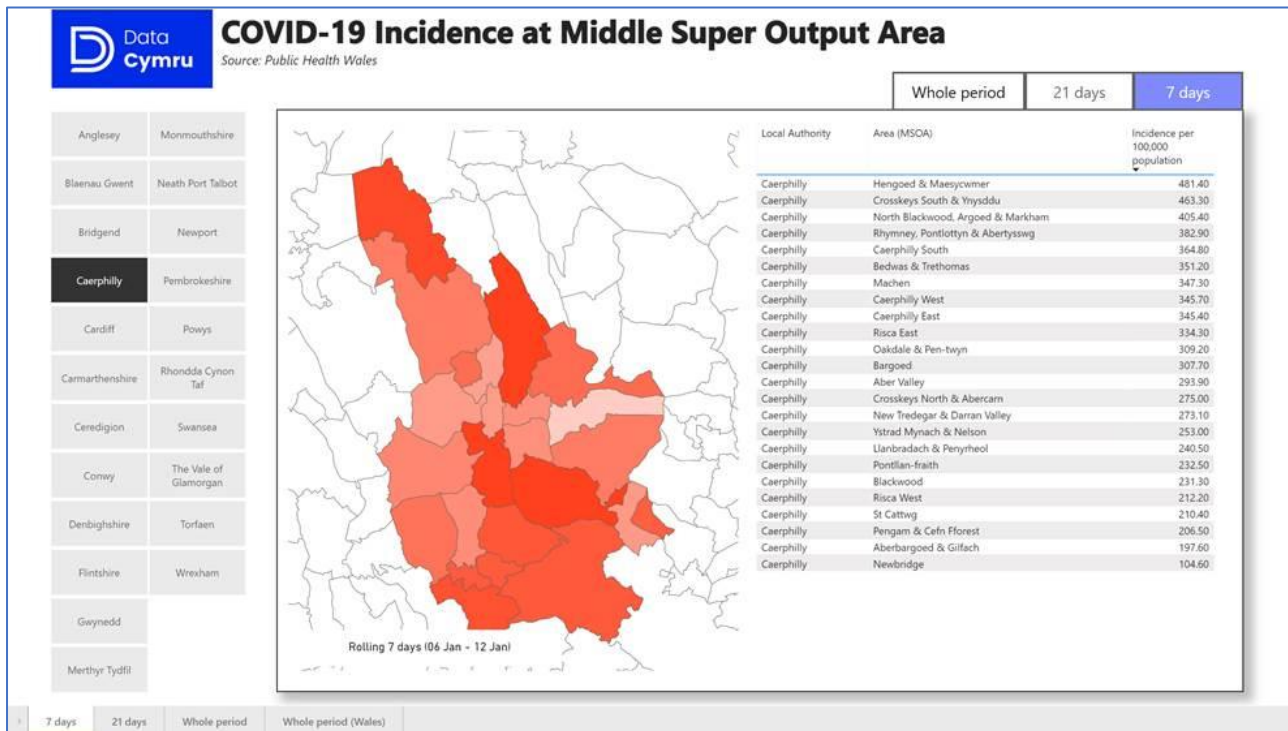
Incidence animation

We also provide an animated map which presents COVID-19 incidence across Wales since the start of the pandemic. <https://www.data.cymru/covid19/incidence-animation>



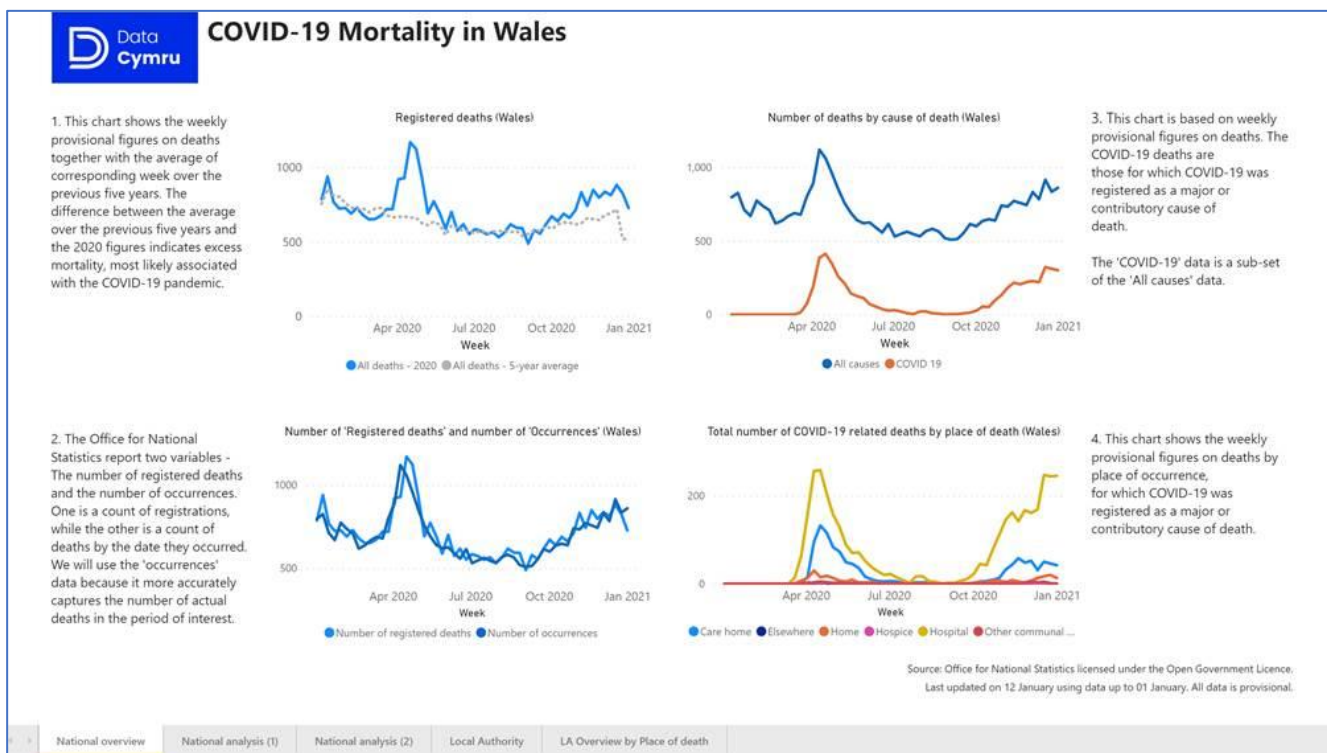
Incidence (Middle Super Output Area (MSOA))

Our incidence (MSOA) dashboard reports the number of COVID-19 cases by MSOA. We update data on a daily basis, including weekends. <https://www.data.cymru/covid19/incidence-msoa>



Mortality

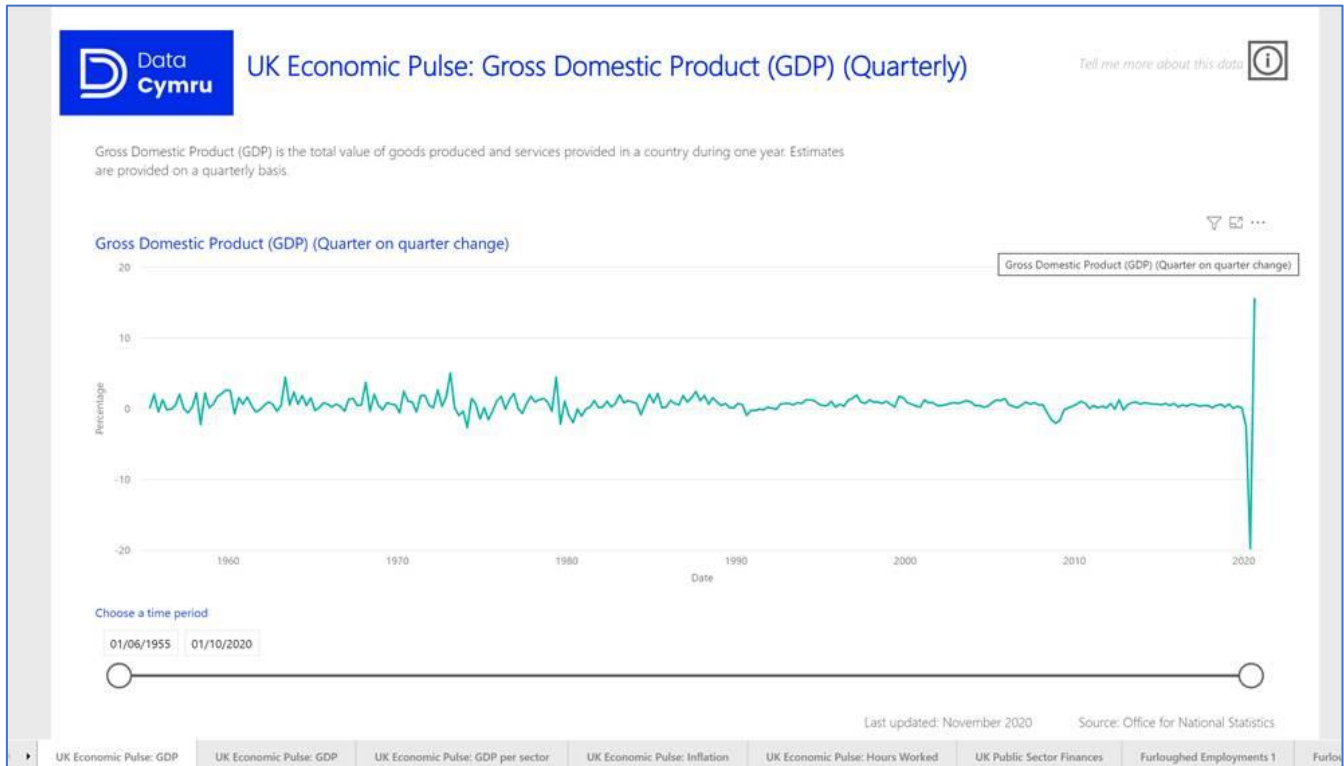
Our mortality dashboard reports the number of deaths from all causes and COVID-19, by place of occurrence (i.e. hospital, home, hospice etc.) and local authority. We update data on a weekly basis as source data are made available. <https://www.data.cymru/covid19/mortality>



Economy dashboard

Our economy dashboard reports the impact that the COVID-19 pandemic has had on GDP, hours worked, public sector deficit and debt, the number of furloughed employments, the number of people receiving benefits (claimant count), and house prices. We update data as the latest source data become available.

<https://www.data.cymru/covid19/economy-dashboard>

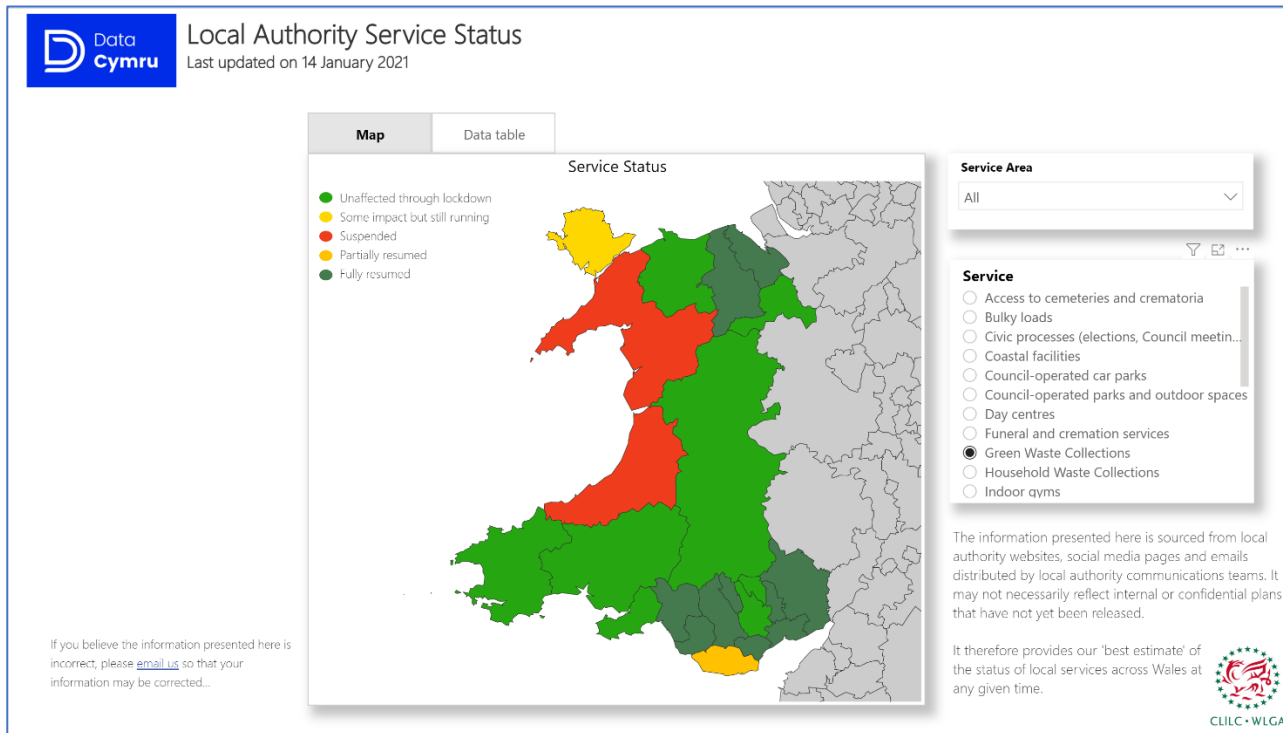


Local authority service status

We continue to support the Welsh Local Government Association and Welsh Government colleagues to understand the impact of COVID-19 on the provision of local authority services through our [Local Authority Service status](#) tool.

Using local authority social media pages and websites, we monitor the status of local authority services and update the tool on a weekly basis.

For more information, please contact [Duncan MacKenzie](#).



Capacity building

We are currently compiling half-day training courses around how to design and run focus groups and how to create surveys. These courses will undergo internal pilots in March 2021 and will be rolled out to interested colleagues in April 2021. Please get in touch if you would like to attend!

Additionally, we will shortly publish a Guide to Summary Statistics and a Guide to Presenting Data. Watch this space!

For further information, please contact [Sam Sullivan](#).

Social Care Wales Population Projections Platform

We have developed and successfully launched the [Social Care Wales Populations Projections Platform](#), the successor to Daffodil, on behalf of Social Care Wales. The platform is designed to help service designers and others in the sector understand how health and social care needs will change and evolve over the next 20 years. Utilising PowerBI, the platform allows users to filter data by the conditions they're interested in, geography, age, and gender.

Social Care Wales and Data Cymru are seeking further feedback to help develop this tool further.

For further information, please contact [Suzanne Draper](#) or [Daniel Cummings](#).

OpenDataWales

Following a successful alpha testing phase, development of our open data platform for local authorities and public bodies (OpenDataWales) will now be tested by a group of local authorities. The site allows local authorities and other public sector organisations to seamlessly upload their data for use by the public. The platform is scheduled to launch in March 2021.

We will be engaging further with potential users of OpenDataWales ahead of launch.

For further information, please contact [Suzanne Draper](#) or [Daniel Cummings](#).

Labour Market Intelligence

We continue to support Regional Skills Partnerships (RSPs) and their partners. Utilising a mixture of publicly available sources, as well as commercial datasets we have procured (such as EMSI), we are:

- Providing monthly reports on job postings for local authorities, including by occupation;
- Supporting local authority employability teams in their recovery plans;
- Undertaking research and providing intelligence around specific policy challenges such as career change opportunities for those working in retail or hospitality; and
- Engaging with Welsh Government and providing insights, where appropriate.

For further information, please contact [Daniel Cummings](#).

DataBasic: building data confidence

Originally developed by researchers at Massachusetts Institute of Technology (MIT), the DataBasic training programme is designed to help anyone in an organisation, whether or not they have data responsibility and no matter how senior they are, get more **confident** with data. The programme comprises a series of exercises, workshops (most of which rely solely on paper, pens and discussion) and a small number of online tools all designed to help you build the fundamental skills needed to use data more effectively. And now we, in collaboration with [Data Orchard CIC](#), are bringing it to Wales!

Following a successful alpha pilot of the training programme with a Welsh audience, we have been working with MIT to create DataBasicCymru. DataBasicCymru will include both an English language

and Welsh language version of the training programme with Welsh relevant data. This is due to be published very shortly.

The next step is to pilot the new programme. Over the next couple of months, we will be inviting individuals from across the public sector to run through the programme with us online.

For further information, please contact [Suzanne Draper](#).

Data offer from CACI

In addition to the consortium we run on behalf of authorities in Wales to negotiate access to CACI's commercial data tools at a reduced rate, we are also supporting CACI's current offer of free access to their data tools for a limited period to support COVID-related activity.

This offer is open to all public bodies and you can find details of the offer [here](#).

Support to Public Services Boards

We have been working with colleagues in Welsh Government, the Future Generations Commissioner's office and PSB officers to develop a range of support for PSBs as they begin preparations for their Well-being assessments which are due for completion by May 2022.

Amongst the ideas discussed, we will repeat the provision of a core data set for PSBs, which will allow access to the most frequently used indicator data in an accessible and flexible format.

Additionally, we will be working with public bodies and other national organisations who hold data and information that could inform assessments to understand what information they hold and how we can support them to make this accessible to PSBs.

We will be finalising our ideas with PSBs and other colleagues shortly.

For more information, please contact [Duncan MacKenzie](#).