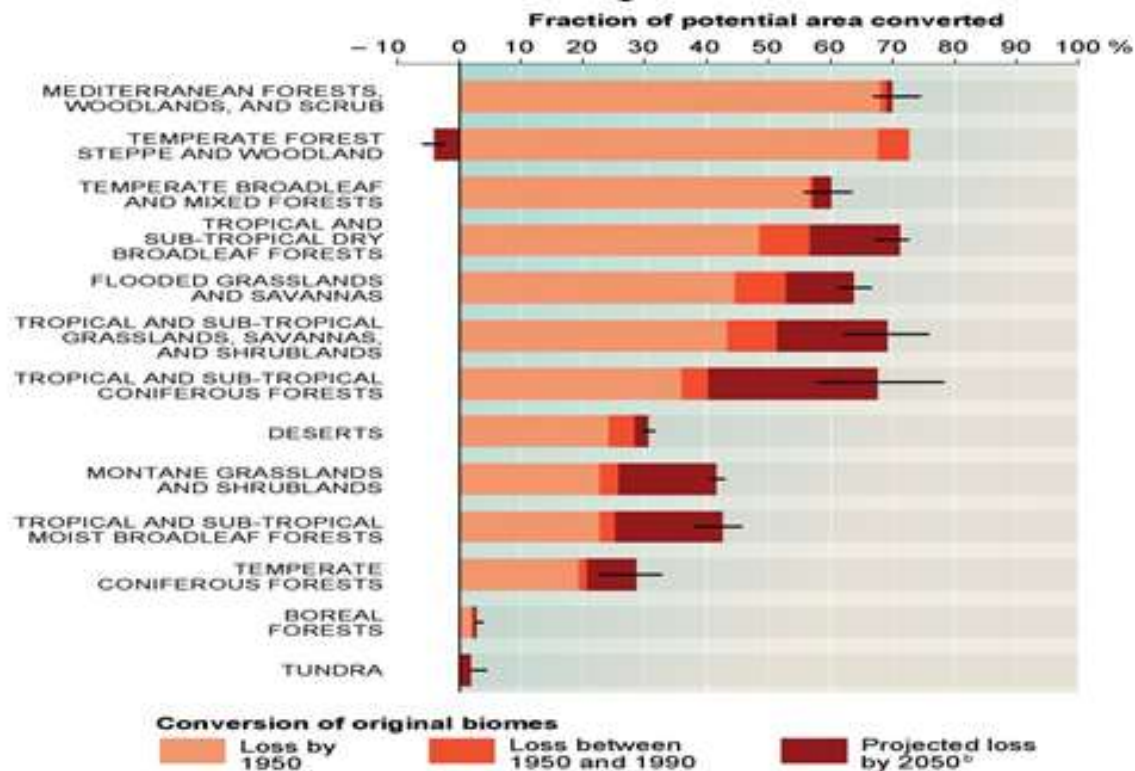


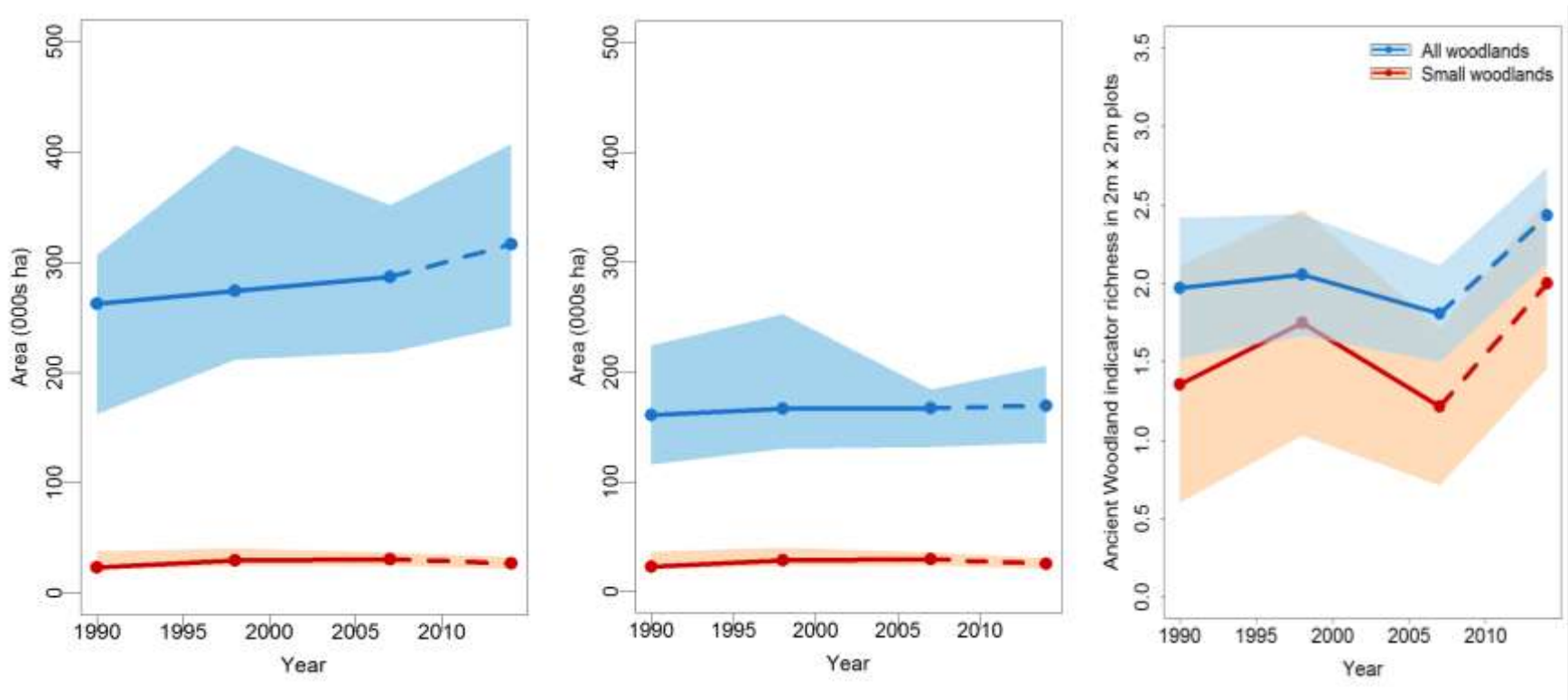
# Welsh Government Future Trends Report 2017– Land Use & Natural Resources data slides

The following slides provide background data and graphs used for the Land Use & Natural Resources theme in the Future Trends Report 2017

## Natural habitats are already experiencing unprecedented change

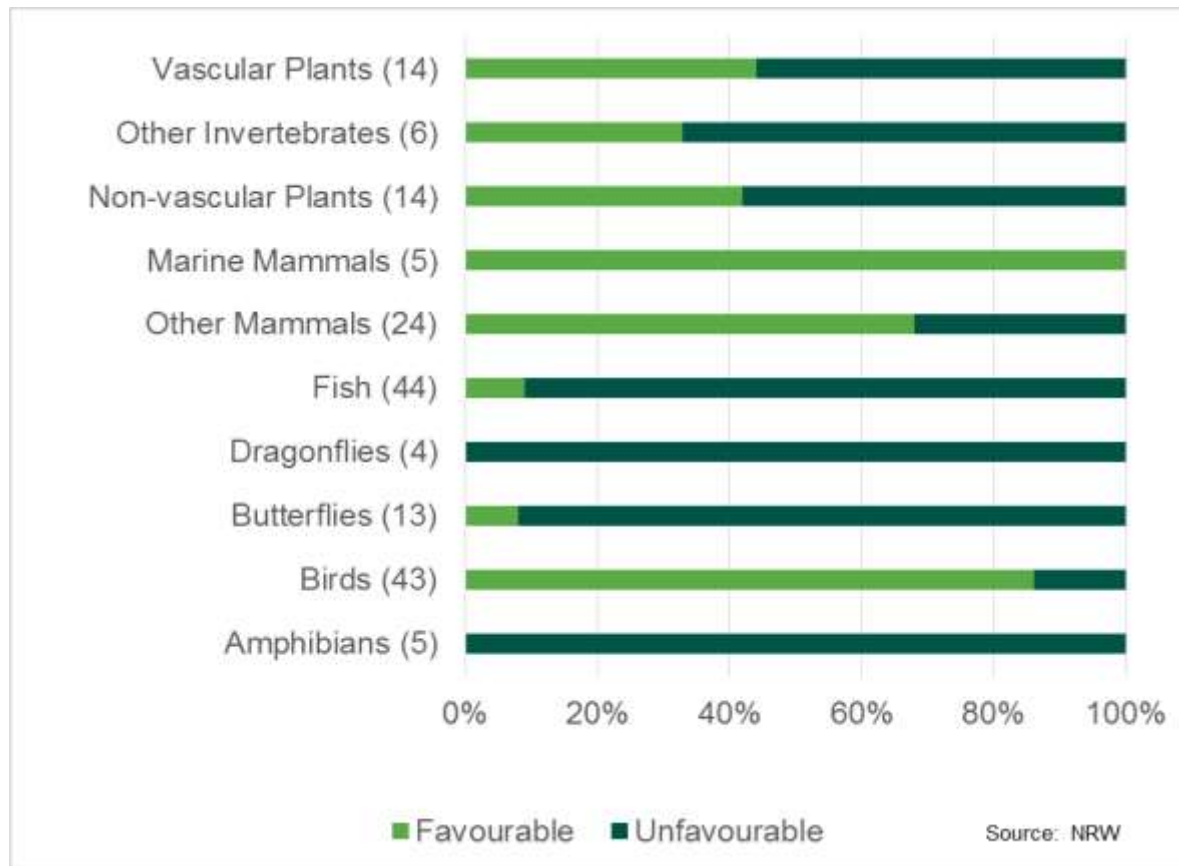


Welsh woodlands show mixed trends. From left to right: a) Ongoing trends in the extent of all large conifer and broadleaf woodlands (blue) and small broadleaf woodlands (red). b) Ongoing trends in the extent of Welsh large (blue) broadleaf and small (red) broadleaf woodlands. c) Ongoing trends in the condition of broadleaf large (blue) and small (red) woodlands .



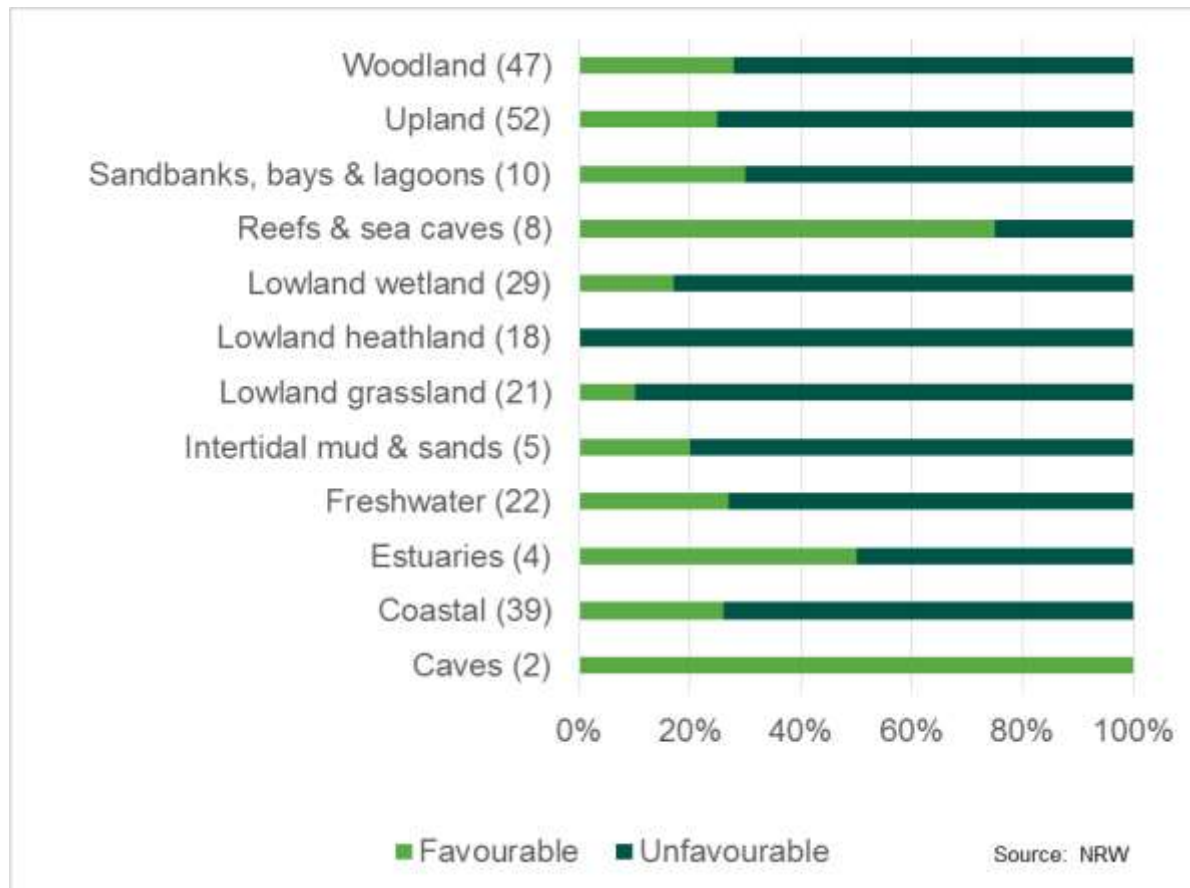
Source: NRW 2015. Solid blue and red lines indicate average value with 95% confidence limits indicated by the shaded blue or red areas whilst the dotted line connects GMEP results to comparable historic survey data (Countryside Survey 1990 -2007)

## An overview of condition of Habitat and Bird Directive species features on Special Areas of Conservation (SACs) and Special Protection Areas (SPAs)



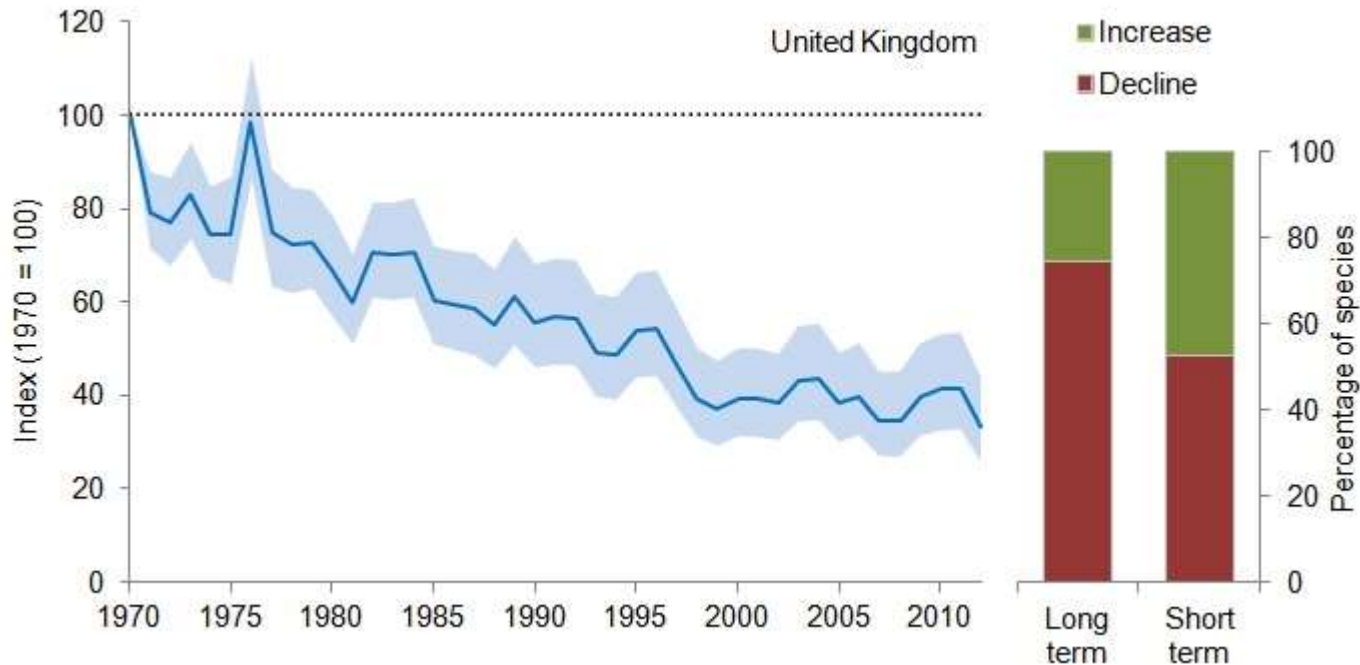
Source: NRW 2015. Current data on SAC and SPA Annex I and Annex II species.

# Percentage of Special Area of Conservation (SAC) habitat features in favourable and unfavourable condition



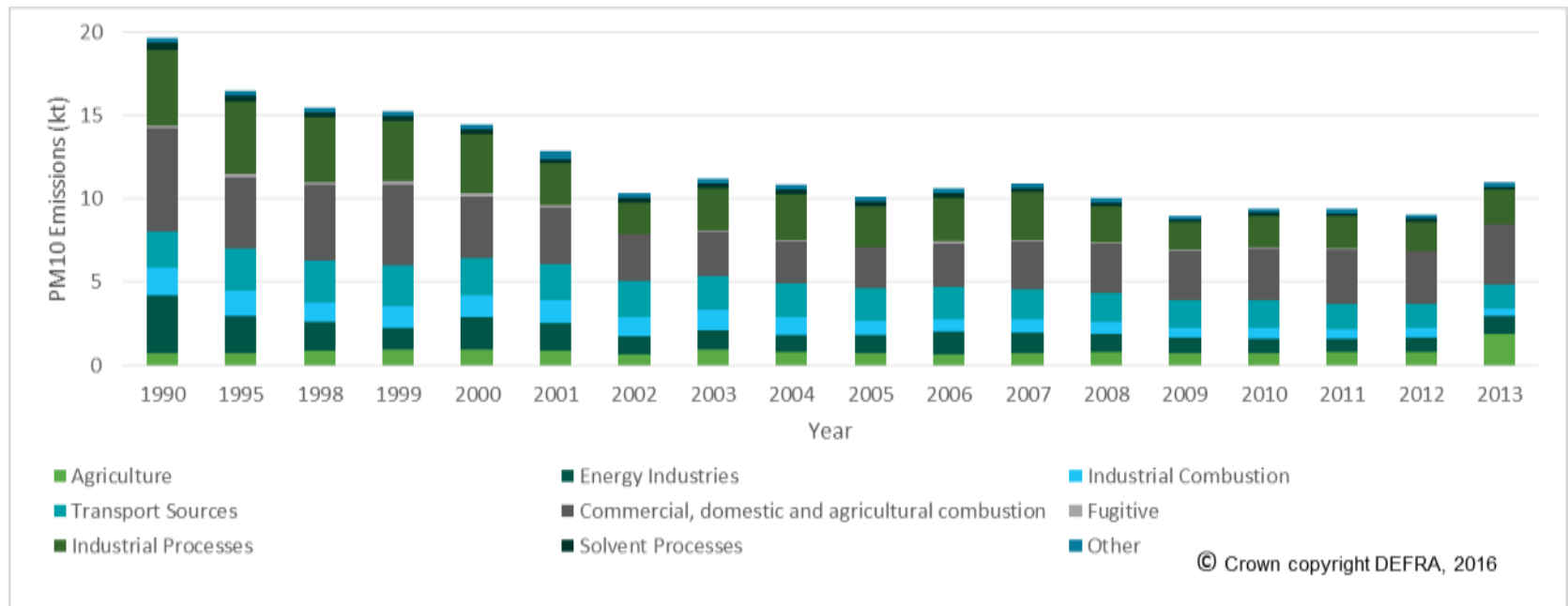
Source: NRW 2015. Current data on SAC habitat features.

Potential trends for animals, plants and other organisms vary enormously across species, with some species increasing and some decreasing. However, long-term combined trends for species are downwards.

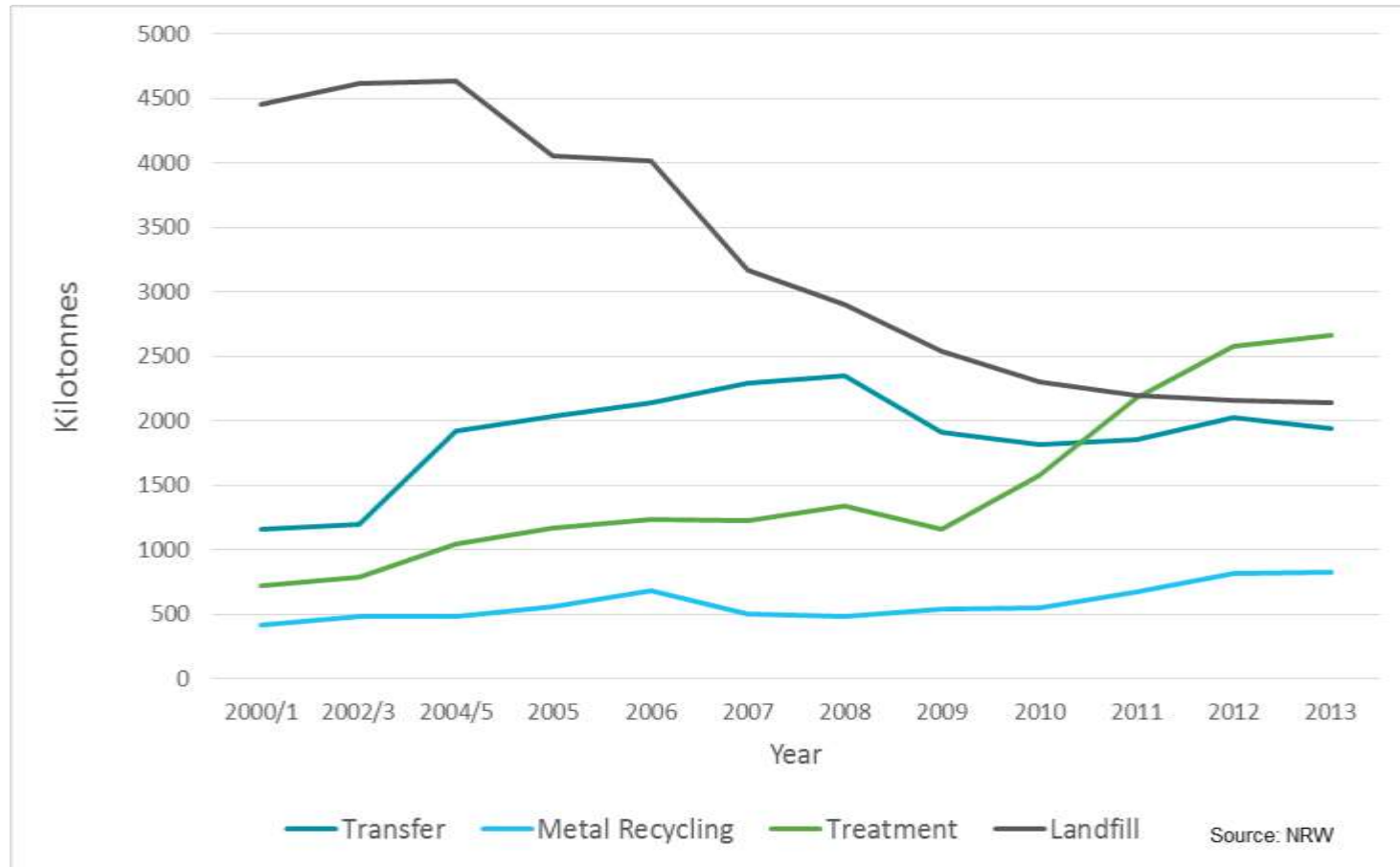


Source: Bat Conservation Trust, British Trust for Ornithology, Butterfly Conservation, Centre for Ecology & Hydrology, Defra, Joint Nature Conservation Committee, People's Trust for Endangered Species, Rothamsted Research, Royal Society for the Protection of Birds.

The decline in heavy industry has resulted in a reduction in emissions of some pollutants, such as particulate matter. Other sources of air pollution, such as transport, agriculture and domestic heating, have become more of a concern.



Waste management trends 2000/1 - 2013. Waste inputs shown in kilotonnes by site type in Wales. There is a generally improving trend.





For more information on the Welsh Government Future Trends Report 2017, please visit the following address:

<http://gov.wales/statistics-and-research/future-trends/>

Background data slides are also available on the website for the other Themes of the Future Trends Report: Population; Health; Economy & Infrastructure; Climate Change; and Society & Culture.