

Census 2021 outputs update

Ellen Burgess

Census 2021 Outputs and Dissemination

9 June 2022

Introduction

- Census Day for England and Wales was 21 March 2021
 - We achieved high response rates, which we will publish with the first results
 - Some 89% of returns were online, which provided us with extremely high quality data
- Since then, a huge amount of work has been taking place to compile, clean, complete, cross-check and ensure confidentiality of the Census 2021 data
 - For the first time, we involved local authorities as part of the quality assurance process
- We've also been consulting with the public, stakeholders and users of census data to seek feedback on our plans for Census 2021 outputs and dissemination
- In this presentation, we discuss what will be included in the Census 2021 first results and provide a look ahead at our plans for later releases

Quality assurance exercise with local authorities

Local authority quality assurance exercise

- We have been validating the Census 2021 statistics against a range of sources, set out in our Quality Assurance (QA) strategy
- For the first time, we invited local authorities (LAs), county councils and combined authorities to take part in a QA exercise and use their unique insights to investigate the estimates for their areas
 - Code of Practice allowed us to share unpublished estimates for QA purposes, but individuals had to sign a Non-Disclosure Agreement (NDA) to take part
- All local authorities in England and Wales were encouraged to participate and to highlight areas where further investigation may be required
 - 18 out of 22 in Wales signed up
 - 160 responses were received across England and Wales
- In response, we:
 - have taken action where needed and gained a greater assurance for the areas not identified as needing further investigation
 - will publish details of the LA QA process later this year
- Final Census 2021 estimates will include LA feedback, as well as ONS's extensive internal quality assurance

Census 2021 first results

To be published 28 June 2022

Products for different users: first results

Data

Population and household estimates by sex and age

Commentary

- Statistical bulletins
- National Statistical blog posts

Exploratory

'Edutainment' game

Explanatory

Scrolly-telling article on changes in your local area

Personas

-  Technical user
-  Expert analyst
-  Policy influencer
-  Information forager
-  Inquiring citizen
-  Passive citizen



These products will be accompanied by supporting information on quality and methods

Data

- We will publish five datasets containing population and household estimates for England and for Wales, rounded to the nearest 100, at local authority level
 1. usual resident population by sex
 2. usual resident population by 5-year age group
 3. usual resident population by sex and 5-year age group
 4. usual resident population density
 5. number of households
- These will be published as Microsoft Excel files and look similar to 2011 Census datasets

Example

P01 Census 2021: Usual resident population by sex, local authorities in Wales [note 1]				
Wales: unitary authorities				
This worksheet contains one dataset.				
Notes for the data can be found in the notes worksheet.				
Source: Office for National Statistics				
Released: 28th June 2022				
Area code [note 2]	Area name	All persons	Females	Males
W92000004	Wales			
W06000001	Isle of Anglesey			
W06000002	Gwynedd			
W06000003	Conwy			
W06000004	Denbighshire			
W06000005	Flintshire			
W06000006	Wrexham			
W06000023	Powys			

- We will publish the datasets and associated metadata in English and in Welsh

Commentary: statistical bulletins

- We will publish two statistical bulletins on the rounded population and household estimates for:
 - England and Wales
 - Wales
- These will provide information on:
 - population size and change
 - the age and sex of the populations
 - how densely areas were populated
 - how many households there were in 2021
- We will publish both bulletins in English and Welsh

Population and Household Estimates for England and Wales: Census 2021

This release provides population and household estimates for local authorities in England and unitary authorities in Wales. The estimates are classified by age and by sex, giving a detailed overview of the composition of the population.

1. Main points

- On census night, the size of the usual resident population in England and Wales was **x** million; **x** million in England and **x** million in Wales. This was the largest the population had ever been.
- The population of England and Wales has grown by **x** million (**x** per cent) since the last census in 2011, when it was **x** million.
- There were **x** million men and **x** million women in England and Wales.
- The proportion of the population who are aged 70 and over is now **x%** (**x%** in 2011).
- There were **x** million households in England and Wales on census night.

2. The population of England and Wales and how it has grown

Commentary: blog

- We will publish a blog to the [ONS National Statistical blog site](#), letting users know we have released Census 2021 first results
- This is just one in a series of blogs we will publish around future Census 2021 and population statistics releases, to:
 - Share information about new data or product releases
 - Explain trends in the data
- On 24 May 2022, we published our latest blog: [First Census 2021 results are on the way](#)

National Statistical

News and insight from the Office for National Statistics

First Census 2021 results are on the way

Jen Woolford | May 24, 2022

Categories: Census, Data, ONS, Population

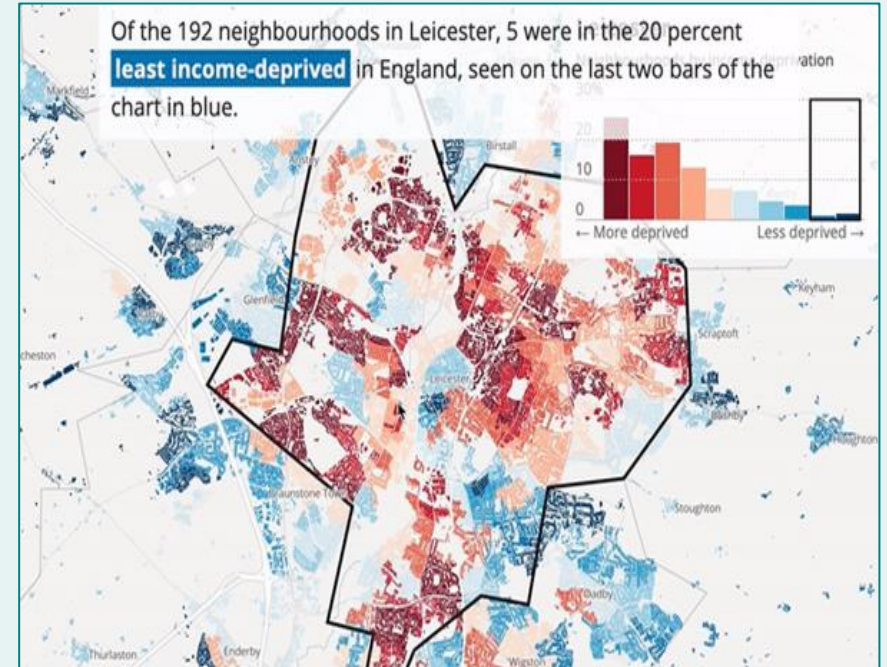


The first results from Census 2021 in England and Wales will be released on 28 June. The population and household estimates from the decennial survey will guide the planning of local and national services we all rely on. But they are just the first brushstrokes of the detailed picture of the nation we will paint over coming months and years, a picture which will get richer and more detailed as we go. Here Jen Woolford explains what you can expect from the first results and how we have reached this stage.

Explanatory: digital content article

- We will produce a scrolly-telling article about population changes by local authority areas in England and in Wales
- As you scroll down the article, you will see information about how the population:
 - has increased or decreased across regions of England and Wales
 - has increased or decreased in your local authority
 - has changed in either England or Wales, depending on the location of your local authority
 - has changed in comparison with neighbouring districts
 - density compares to most and least densely populated areas in either England or Wales
 - age has changed in your area compared with England or Wales

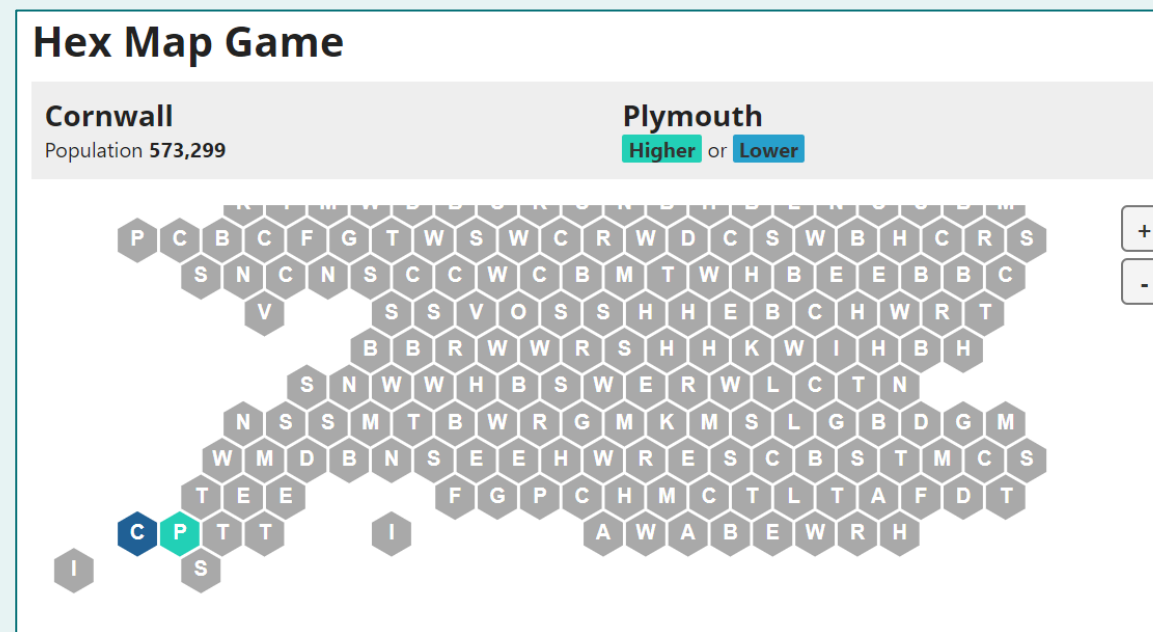
[Previous scrolly-telling example](#)



Exploratory: edutainment

- We will produce an online game that will let you test your assumptions and knowledge about the population of England and Wales
- You can work your way across a map of England and Wales by guessing if the population size of local authorities are larger or smaller than their neighbours
- The game will be embedded into social media platforms, so that users can play it while on Facebook or Twitter

[Hex map game prototype](#)



Supporting information

We plan to publish:

- A quality and methodology information (QMI) report
 - Providing information on the quality of the data
 - We aim to publish this report in both English and Welsh for 28 June
- An overview of Census 2021 estimation and quality assurance processes, providing a summary of activities contributing to how we:
 - created the estimates
 - ensured the estimates were fit for purpose
- A local authority comparison tool, enabling users to:
 - view Census 2021 counts for their local authority
 - compare counts with other sources of data and other local authorities

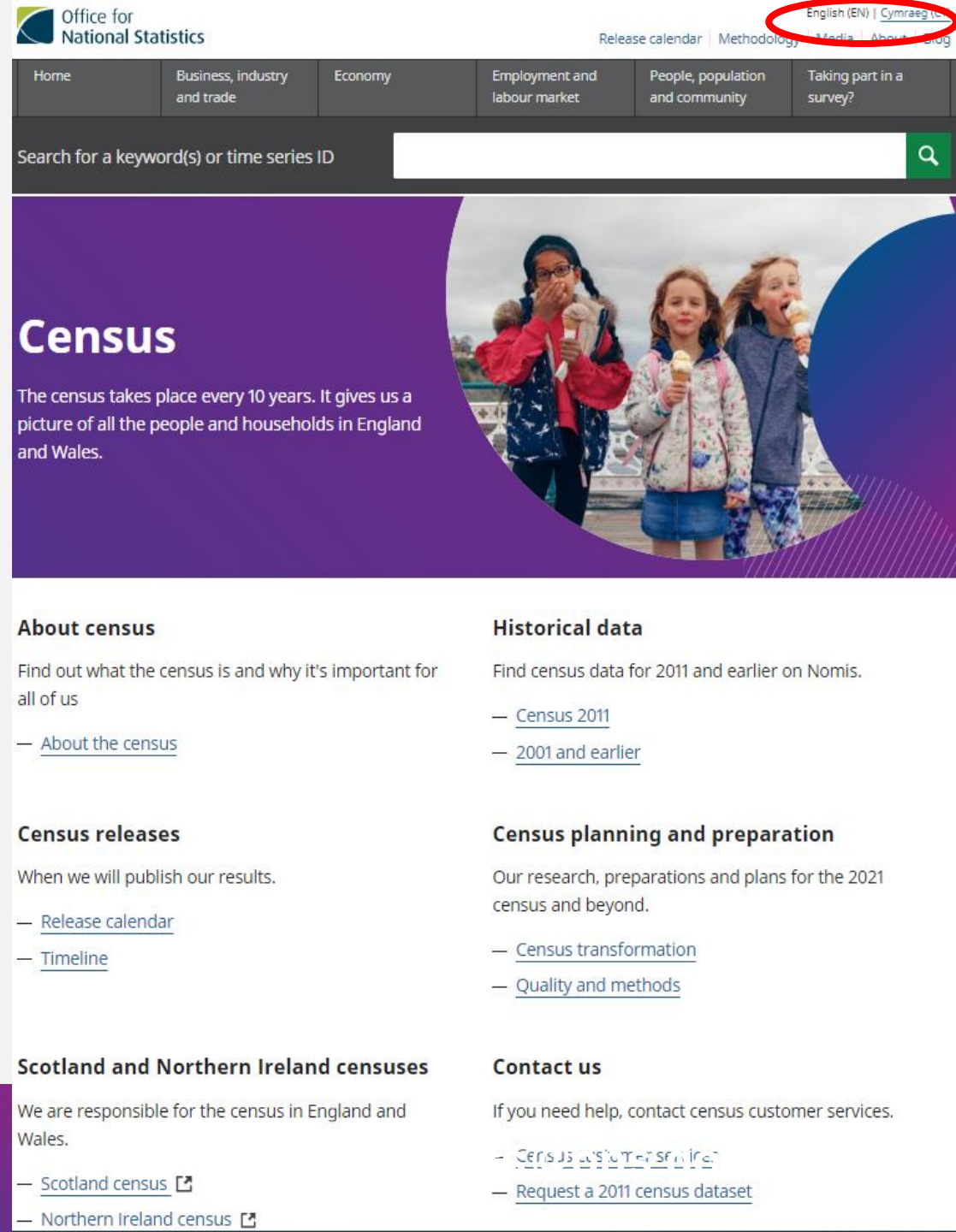
Dissemination of first results

Where to find Census 2021 first results

- ONS website: ons.gov.uk/census
 - All public Census 2021 outputs, including data and analysis, will be available to view and download from the ONS website
- Census campaign website: census.gov.uk
 - Supporting information about Census 2021, targeted at citizen users, will be available on the census campaign website
- As per 2011 Census, first results will **not** be available on Nomis: nomisweb.co.uk
 - However, we will publish most of the public ready-made univariate and multivariate datasets on Nomis in later phases of the release schedule

ONS website

- We have been working with users to create a simple journey to find and access census outputs from the [ONS website](#)
- We have developed a **census hub** page using the branding from the campaign site that will allow users to:
 - access census outputs from one place
 - learn more about how we ran the census
 - see statistics local to them
 - be able to find and compare data from geographic areas
- There is a banner on the ONS homepage, and across the top of each webpage that will take users to the census hub
- The census hub page is available in both English and Welsh
 - we plan to translate onward journeys into Welsh, that lead users to products that available in Welsh



Census campaign website

- We have retained the www.census.gov website that provided the public with information in the run up to Census 2021 and encouraged them to take part
- From this website, the public can find:
 - information about what census is and how we are using their data
 - an introduction to what products we will produce from Census 2021
 - links to the published data on the ONS website
 - A package of supporting products, such as
 - [accessibility content](#), such as British Sign Language (BSL) videos explaining the main points of releases
 - [downloadable resources](#) aimed at local authorities and community groups to help them raise awareness of Census 2021 results
- All content on this website is available in English and Welsh

cyfrifiad 2021
Hafan | Ynglŷn â'r cyfrifiad | Canlyniadau Cyfrifiad 2021 | Eich data a diogelwch | Cysylltu â ni

Diolch am gymryd rhan yn Cyfrifiad 2021

Byddwn yn cyhoeddi canlyniadau cyntaf y cyfrifiad ar gyfer Cymru a Lloegr ddydd Mawrth 28 Mehefin 2022.

[Canlyniadau Cyfrifiad 2021](#)
Dysgwch fwy am ein camau ar gyfer rhyddau canlyniadau Cyfrifiad 2021.

[O gasglu i gyhoeddi gwybodaeth y cyfrifiad](#)
Dysgwch beth sy'n digwydd rhwng casglu a chyhoeddi gwybodaeth Cyfrifiad 2021.

[Eich data a diogelwch](#)
Yr hyn rydym ni'n ei wneud â'ch gwybodaeth bersonol a sut rydym ni'n ei chadw'n ddiogel.

Byddwn yn cyhoeddi canlyniadau cyntaf Cyfrifiad 2021 ddydd Mawrth 28 Mehefin 2022


Bydd y canlyniadau cyntaf yn dangos nifer y bobl yn ôl rhyw ac oedran yng Nghymru a Lloegr.

[Dysgwch fwy am gam un o'n canlyniadau cyfrifiad](#)


Straeon y cyfrifiad

Gall gwybodaeth cyfrifiad helpu i wneud gwahaniaeth
Mae pob math o sefydliadau, o awdurdodau lleol i elusennau, yn defnyddio gwybodaeth cyfrifiad i helpu i ddarparu'r gwasanaethau sydd eu hangen arnom ni i gyd.

[Darllenwch fwy o straeon y cyfrifiad](#)



Urdd Gobaith Cymru
Mae gwybodaeth o'r cyfrifiad yn helpu sefydlad i greu cynllun prentisiaeth ar gyfer siaradwyr



Renewable UK
Mae gwybodaeth o'r cyfrifiad yn helpu Renewable UK i gynyddu ynni gwyrdd a mynd i'r afael â'r newid

Cymryd rhan

Awdurdodau lleol
Dysgwch sut y gall awdurdodau lleol helpu i gefnogi canlyniadau'r cyfrifiad yn eich ardal.

Partneriaid cymunedol
Dysgwch sut y gallwch helpu i gefnogi canlyniadau'r cyfrifiad yn eich cymuned.

Adnoddau sydd ar gael i'w lawrwytho
Os ydych yn gweithio i awdurdod lleol neu grŵp cymunedol, gallwch lawrwytho adnoddau i gefnogi canlyniadau'r cyfrifiad.

Cael cefnogaeth
Cysylltwch â ni am gymorth a chefnogaeth i gael mynediad at ganlyniadau'r cyfrifiad.

Cysylltu â ni
Am fwy o wybodaeth am y cyfrifiad, [cysylltwch â ni](#).

Dilynwch ni
[Twitter](#) [Facebook](#) [Instagram](#)

What comes next?

Phase one release plans continued

First results

28 June 2022

Population and household estimates, at local authority level, by sex by age

Topic summaries, primarily univariate data

Autumn to
Winter 2022

1. Demography and migration

2. Ethnic group, national identity, language and religion

3. Health, disability, and unpaid care

4. Housing

5. Labour market and travel to work

6. Sexual orientation and gender identity

7. Education

8. UK armed forces veterans

Area profiles

Simple summary
of census data for
a chosen
geographic area

Example of Welsh specific products

- As part of the topic summary release about ethnic group, national identity, language and religion, we plan to publish:
 - Welsh specific univariate datasets for Welsh geographies, on:
 - Welsh language skills – detailed
 - Welsh language skills – speaking
 - Welsh language skills – writing
 - Welsh language skills – reading
 - Welsh language skills – understanding
 - a bulletin about language in England and Wales
 - a bulletin about Welsh language to be produced by the Welsh Government
- In the area profile product, we plan to include the ‘Welsh speaking ability’ variable, allowing users to:
 - see a percentage of the population in each area that speaks Welsh for Welsh geographies
 - compare these percentages at local and regional levels
- We have detailed our draft proposals for the Census 2021 topic summary and area profile datasets in a [downloadable spreadsheet \(195KB\)](#) on our [website](#).

*these plans may be subject to change

Later phases of the release schedule

Phase 2

Phase 2

Winter 2022

Multivariate and cross-tabulated data
Ready-made datasets and datasets users change themselves

Phase 3

From Spring 2023

Alternative population bases Eg workday or out-of-term-time populations	Small population datasets Eg Sikh, Cornish
Origin-destination data Eg travel to work or internal migration data	Microdata Anonymised individual and household record-level data

From summer 2023

UK data England, Wales, Northern Ireland and Scotland data	Longitudinal and linked data analysis Through time and with other data sources
--	--

Analysis programme

Detailed analytical reports exploring specific sub-populations and policy areas

Examples of Welsh specific multivariate datasets

- As part of the release of multivariate data release, we plan to produce 15 ready-made datasets for Welsh geographies

- available at Output Area (OA) and above:

- Ability to speak Welsh by
 - industry
 - national identity by age
 - National Statistics Socio-economic Classification (NS-SEC)
 - occupation
 - tenure - Household Reference Persons
 - employment history
- Family type by parents' ability to speak Welsh by age and ability to speak Welsh of dependent child

- General health by ability to speak Welsh by age
- Disability by ability to speak Welsh by age
- Number of people who can speak Welsh by household size
- Welsh household composition by age of youngest dependent child
- Welsh language skills by country of birth
- Welsh language skills by sex by age
- Welsh language skills by tenure - Household Reference Persons

- available at Middle Layers Super Output Area (MSOA) level and above
 - Number of people who can speak Welsh by household size

*these plans may be subject to change

- We are also considering which of the Welsh specific variables to include in the functionality that will allow users to change datasets by selecting variables and classifications to add to existing ready-made datasets

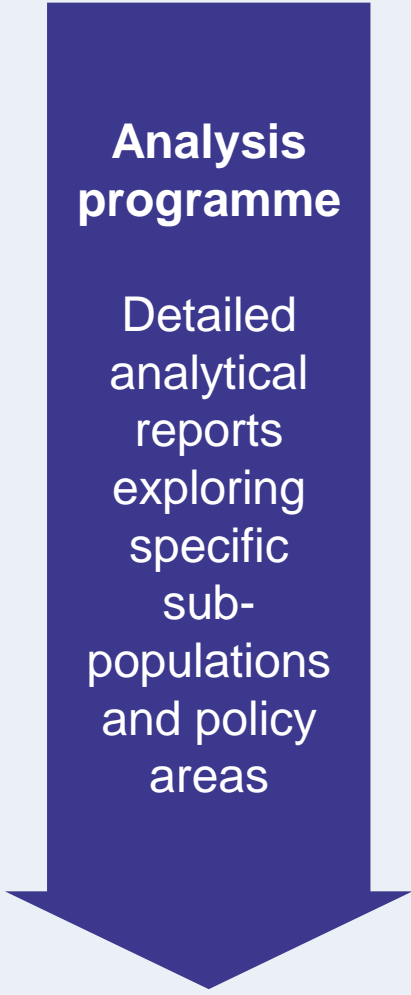
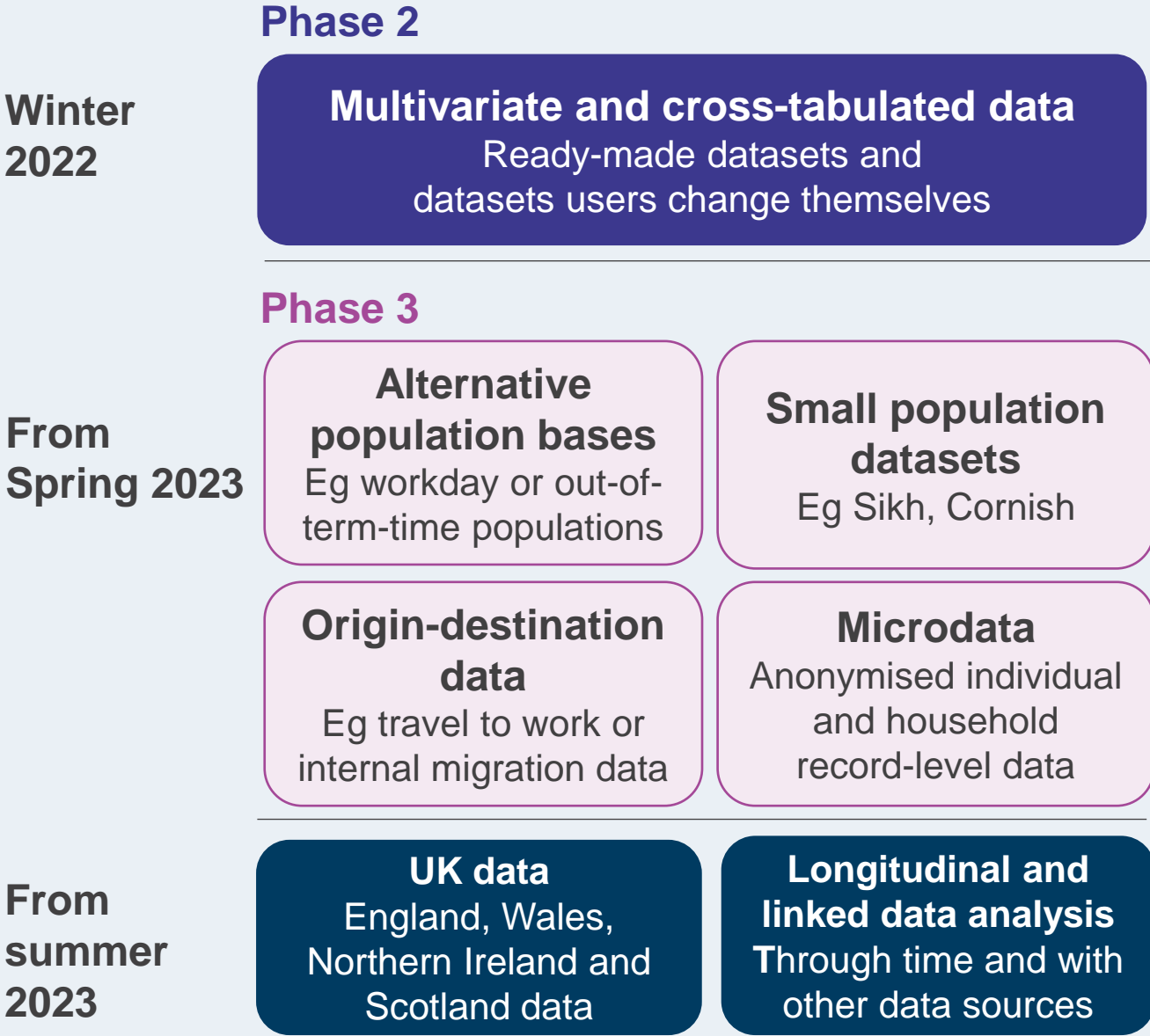
Examples of Welsh specific analysis

- In 2023, we will begin a three year Census 2021 analysis programme
- Our analysis proposals are grouped by theme and detailed on the [ONS website](#)
 - Ageing
 - Demography
 - Education
 - Equalities
 - Ethnic group, national identify, language and religion
 - Health, disability and unpaid care
 - Housing
 - International migration
 - Labour market
 - Sexual orientation and gender identity
 - Travel to work and other geographical analysis
 - UK armed forces veterans
- In 2023, we aim to publish Welsh specific analysis on:
 - Welsh language across Wales: age and sex
 - Welsh language across Wales: households and transmission
 - Welsh language across Wales: education, employment, health and housing
- From 2024, we aim to publish Welsh specific analysis on:
 - Number of second homes in England and Wales, including the distribution of holiday homes within Welsh speaking communities

*these plans may be subject to change

Later phases of the release schedule

Phase 3 and beyond



Product overview across later phases

Data

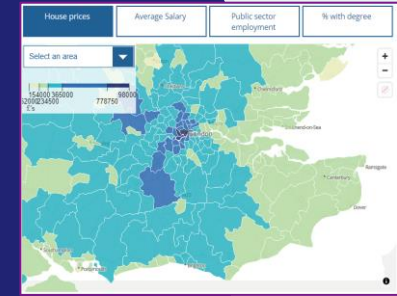
- univariate datasets
- multivariate datasets

Ready-made datasets and datasets users can make themselves, all published on the ONS website and some published on the Nomis website

Table population: All usual residents	
Variable by measures	
Units: Persons	
Date	2011
Geography	England
	value
All usual residents	53,012,456
Males	26,069,148
Females	26,943,308
Lives in a household	52,059,931
Lives in a communal establishment	952,525
Schoolchild or full-time student aged 4 and over at their non term-time address	650,145
Area (Hectares)	13,027,842.85
Density (number of persons per hectare)	4.1

Exploratory

- area profiles
- census atlas
- edutainment games
- custom profile builders
 - build and area profile
 - draw your own geography
 - population group profiles



Commentary

- statistical bulletins
- analysis articles
- Blog posts

Population and Household Estimates for England and Wales: Census 2021	
This release provides population and household estimates for local authorities in England and unitary authorities in Wales. The estimates are classified by age and by sex, giving a detailed overview of the composition of the population.	
1. Main points	
<ul style="list-style-type: none">• On census night, the size of the usual resident population in England and Wales was x million, x million in England and x million in Wales. This was the largest population had ever been.• The population of England and Wales has grown by x million (x per cent) since the last census in 2011, when it was x million.• There were x million men and x million women in England and Wales.• The proportion of the population who are aged 70 and over is now x% (x% in 2011).• There were x million households in England and Wales on census night.	
2. The population of England and Wales and how it has grown	

Explanatory

- Digital content articles
 - Robo-journalism
 - Scrolly telling articles

How our population is changing

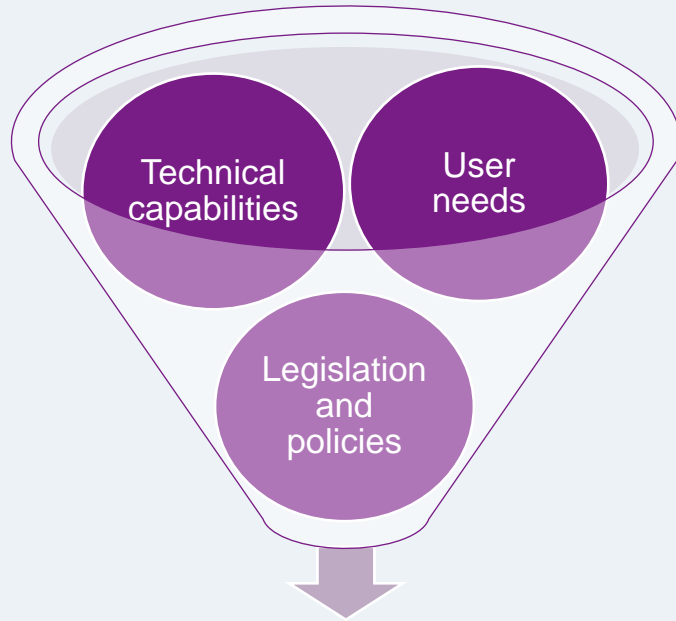
This is a dynamic scrollytelling demo with semi-automated data-driven content.

It highlights some of the significant demographic changes England & Wales between the 2001 and 2011 Census, and allows for guided exploration at a Local Authority level.



These products will be accompanied by supporting information about quality and methods

Findings from our Welsh language discovery



What we should build?

- User and stakeholder research has helped provide more clarity on priorities
- The main insight identified was the value of having a single translated source of truth for the definitions and other metadata
- We are prioritising this and will build out as far as we can to provide user journeys in Welsh, as well as English

Summary

In summary

- On 28 June 2022, we are excited to begin releasing data from Census 2021
- During the summer, we will share more information about the publication dates and content for later releases
 - To hear about our plans or upcoming events, sign up to receive '2021 Census outputs' updates on [GovDelivery](#)
- Please do not hesitate to contact us for more information:
census.outputs@ons.gov.uk

Thank you

Any questions?