

# 2020 Wales Greenhouse Gas Emissions

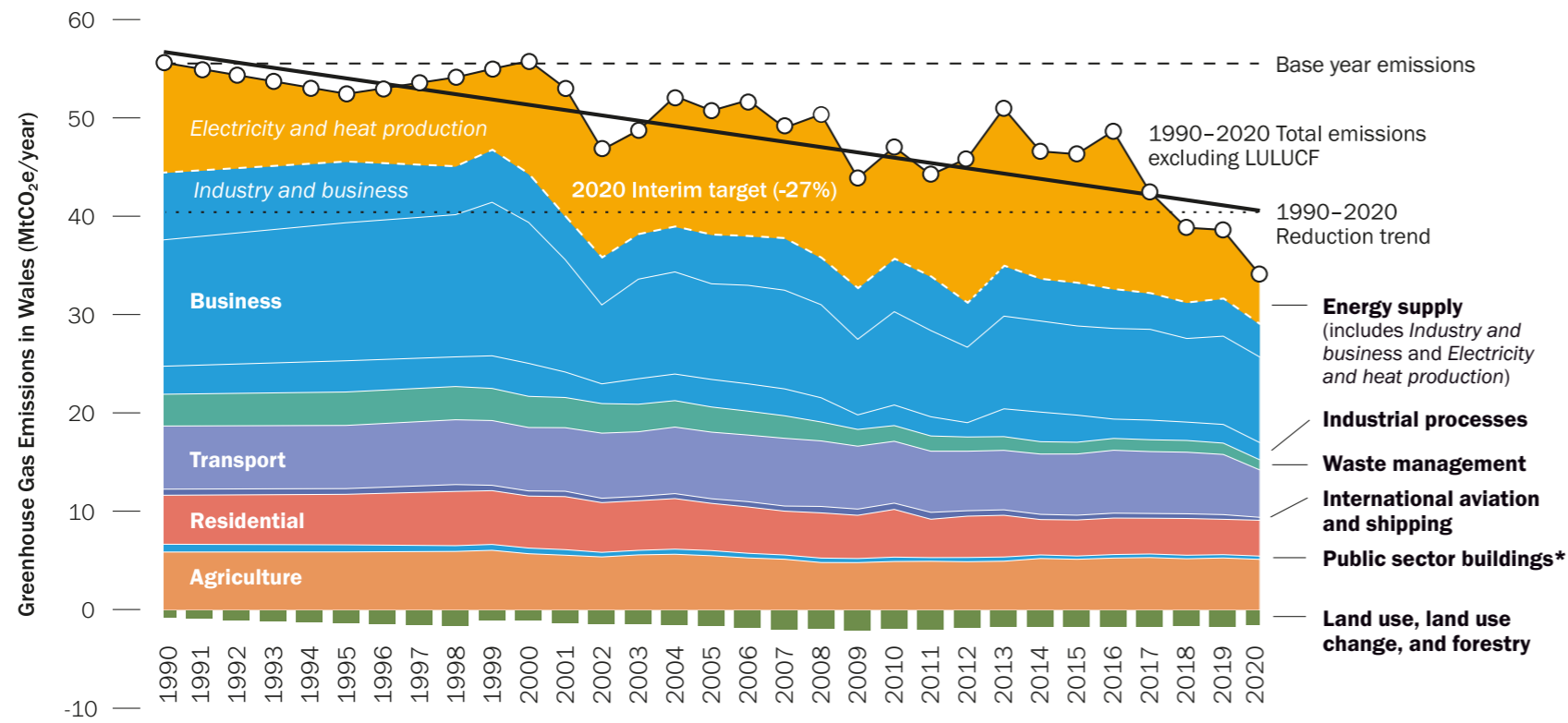


#SeroNetCymru  
#NetZeroWales



Llywodraeth Cymru  
Welsh Government

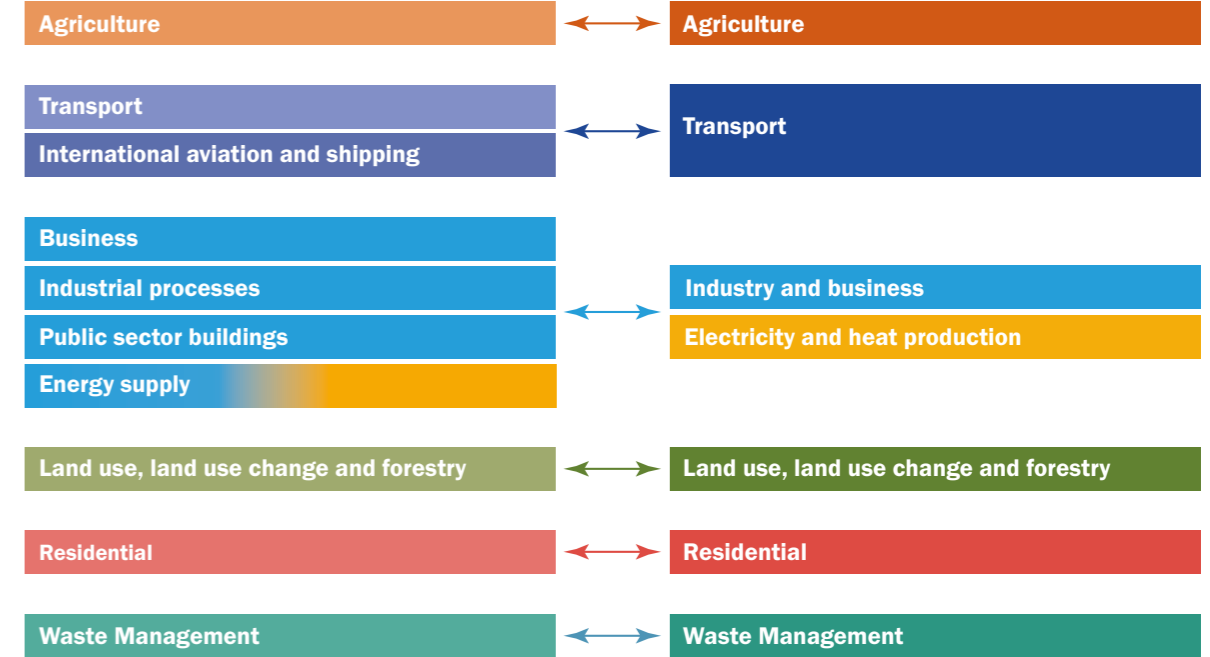
## Greenhouse Gas Emissions in Wales



\*The Public sector in the Greenhouse Gas Inventory is solely represented by emissions from public sector buildings.

The sector definition of the Net Zero Wales Plan (Carbon Budget 2 - CB2) varies from both the Greenhouse Gas Inventory (GHGI) and the Low Carbon Delivery Plan (Carbon Budget 1 - CB1).

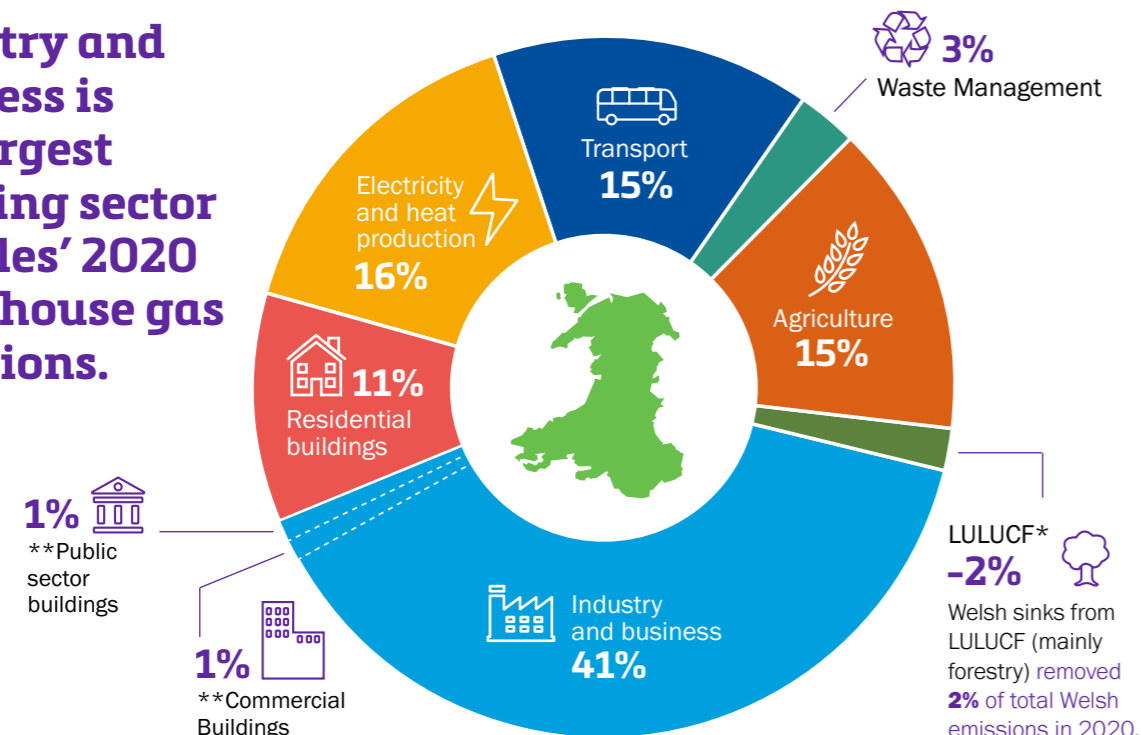
### GHGI Sector



## Change in greenhouse gas emissions



## Industry and business is the largest emitting sector of Wales' 2020 greenhouse gas emissions.



## Sources of emissions Net Zero Wales Plan (CB2)

	1990 (base year)-2020	2019-2020
Agriculture	-12.6%	-2.7%
Industry and business	-38.9%	-6.2%
Electricity and heat production	-53.4%	-23.6%
Residential buildings	-26.8%	+1.4%
Transport	-27.4%	-22.5%
Waste management	-68.2%	-10.8%

## Size of emissions sink\* Net Zero Wales Plan (CB2)

	1990 (base year)-2020	2019-2020
LULUCF	+0.31 MtCO <sub>2</sub> e	-0.06 MtCO <sub>2</sub> e

\* The LULUCF sector has remained a net removal of emissions throughout the whole time-series. This sink has increased by 0.31 MtCO<sub>2</sub>e between 1990 and 2020, and it has decreased by 0.06 MtCO<sub>2</sub>e between 2019 and 2020.

\* Land use, land use change and forestry  
\*\* The percentages represent share of Wales' total GHG emissions, therefore the emissions are included within the Industry and Business sector (41%) to align with the Net Zero Wales Plan.