

# Community Focused Schools

Did you know...

**28%** of children in Wales live in relative income poverty.



This can have an impact on:

## Literacy skills



By age **5**

children living in low income households may already be a year behind in their literacy skills<sup>1</sup>.

## School attendance



**-8 percentage points**

is the difference in school attendance in Wales between those eligible for free schools meals and those who are not.

## GCSE attainment

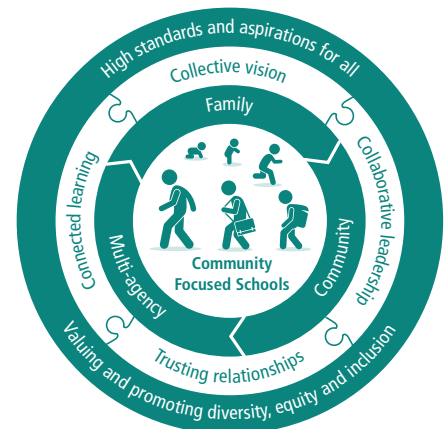
A\* to C grades in 2021 to 2022 were



**28 percentage points**

lower for children in Wales who are eligible for free school meals than those who are not.

Community Focused Schools are a crucial part of **our national mission** to tackle the impact of poverty on educational attainment.



Community Focused Schools can help tackle the impact of poverty on educational attainment by:



Supporting strong links between schools and families to better support children's learning, aspirations and attendance.



Supporting families to help their children with their learning at home and improving the home learning environment.



Encouraging conversations about learning.



Offering connected learning opportunities between home, school and the community.



Helping to lessen the impact of the pandemic on learning.



Providing high quality Early Childhood Play, Learning and Care (ECPLC).



Working together with the community.



Providing links to wider support services ensuring easier access for families and children.

For more information see the **Community Focused Schools guidance**

1. Equity in education: The foundation for a more resilient future OECD. This data refers to children aged 5 in England, Estonia and the United States.