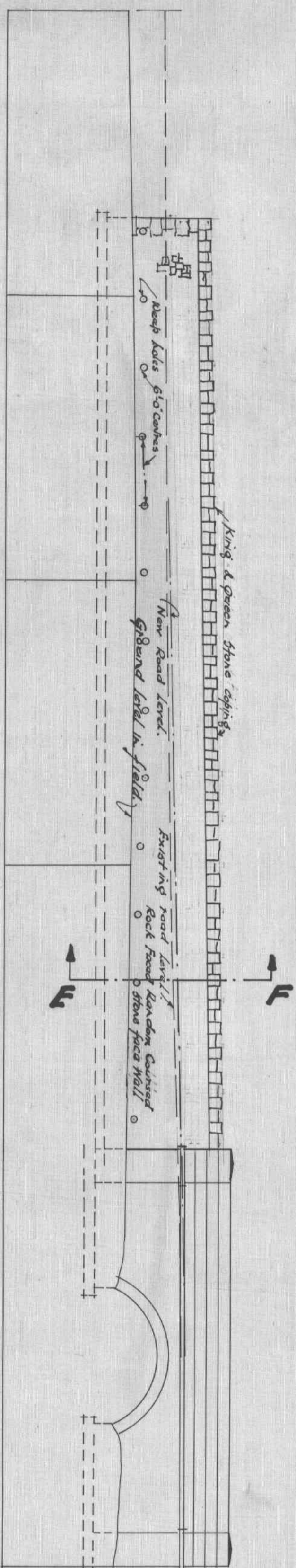


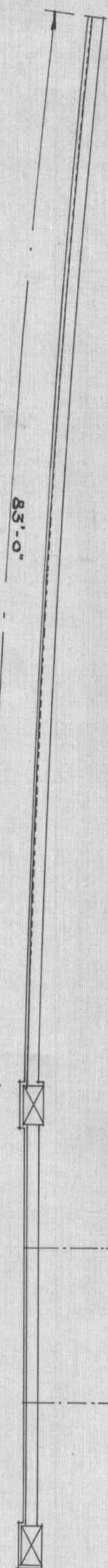
DENBIGHSHIRE COUNTY COUNCIL. MAIN ROADS & BRIDGES DEPARTMENT.
PROPOSED WIDENING OF DONT CACCON
LANFERDES NE DUTHIN.

DRAWING No 3

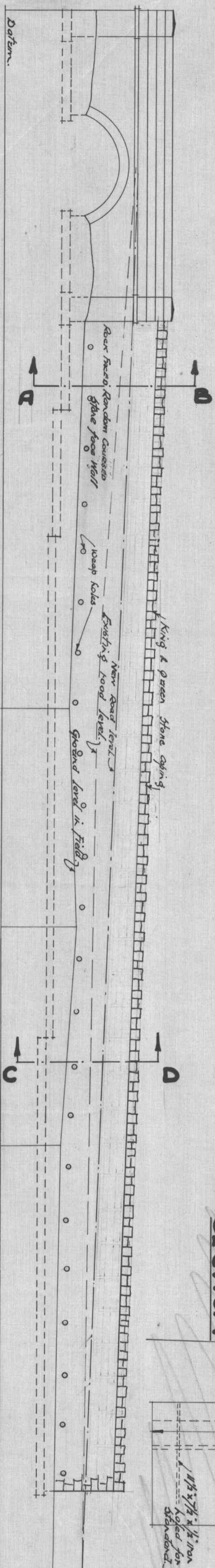
PLAN of APPROACH RETAINING WALLS AND DETAILS OF RAILINGS.



ELEVATION

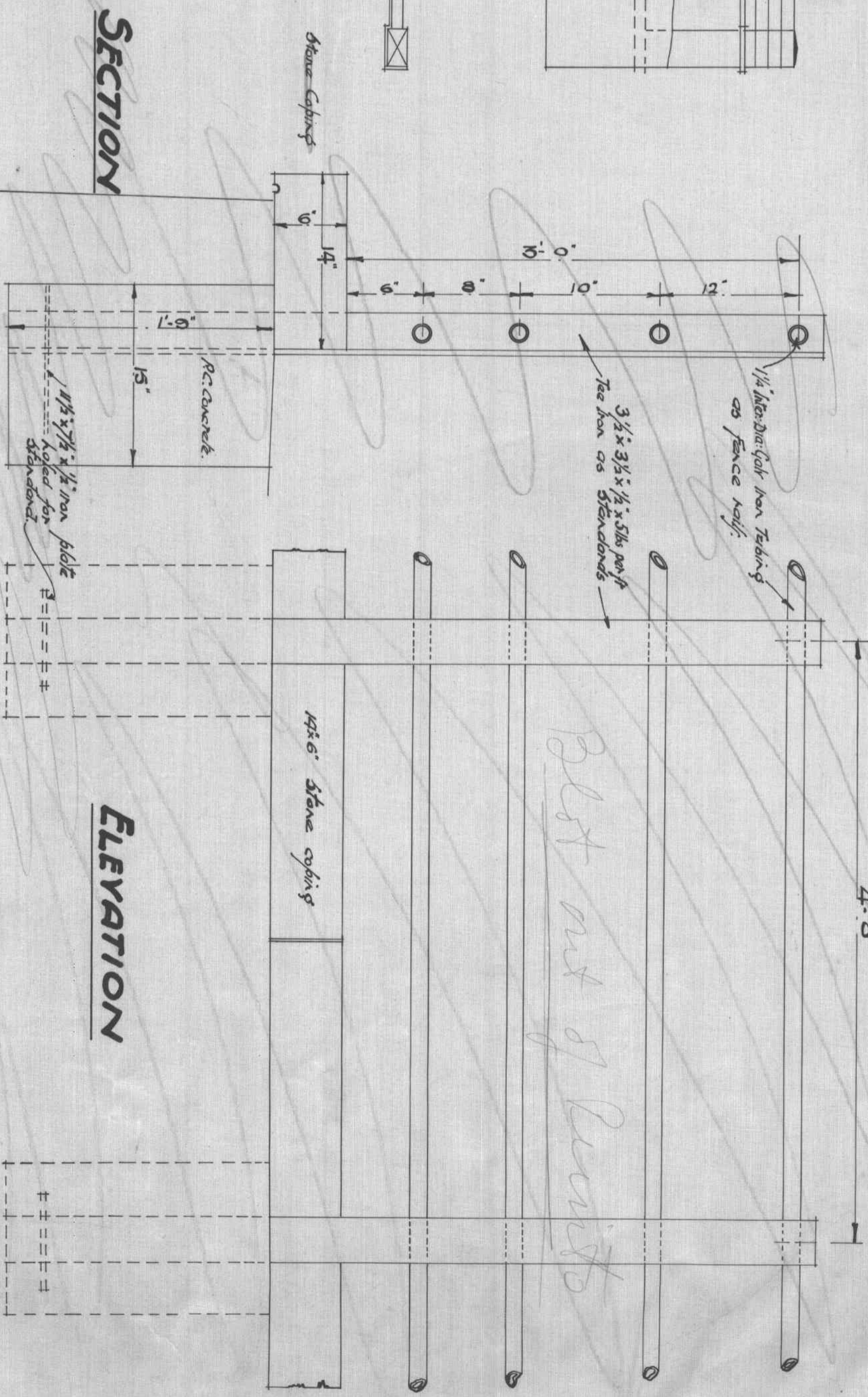


PLAN of SOUTH APPROACH WALL.



ELEVATION

SECTION

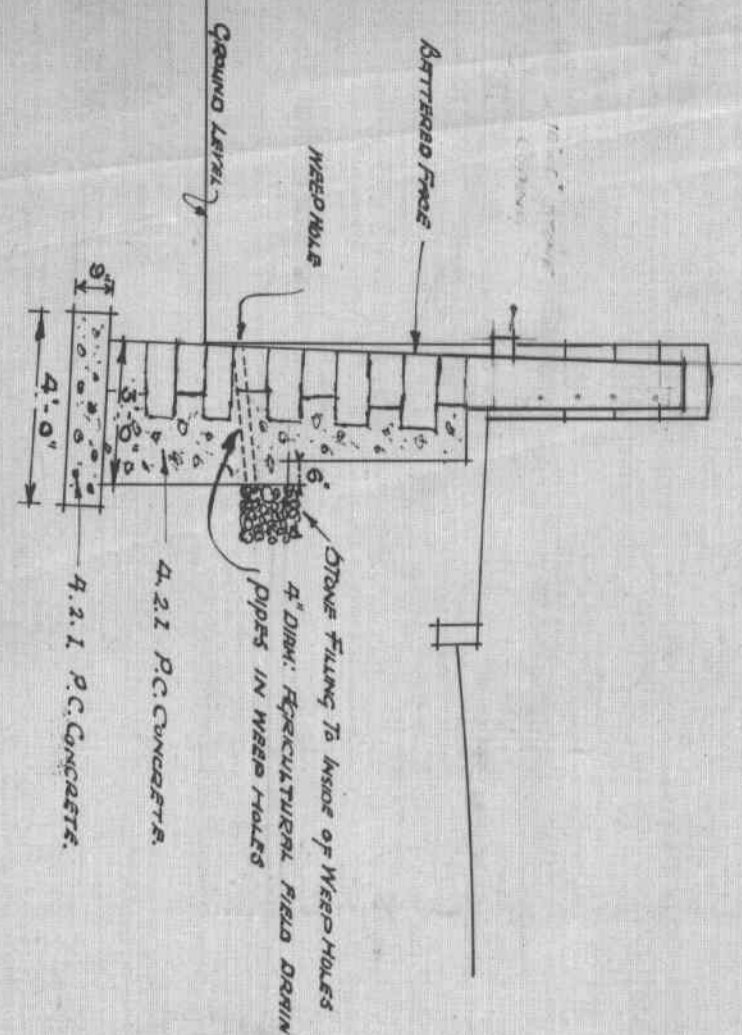


ELEVATION

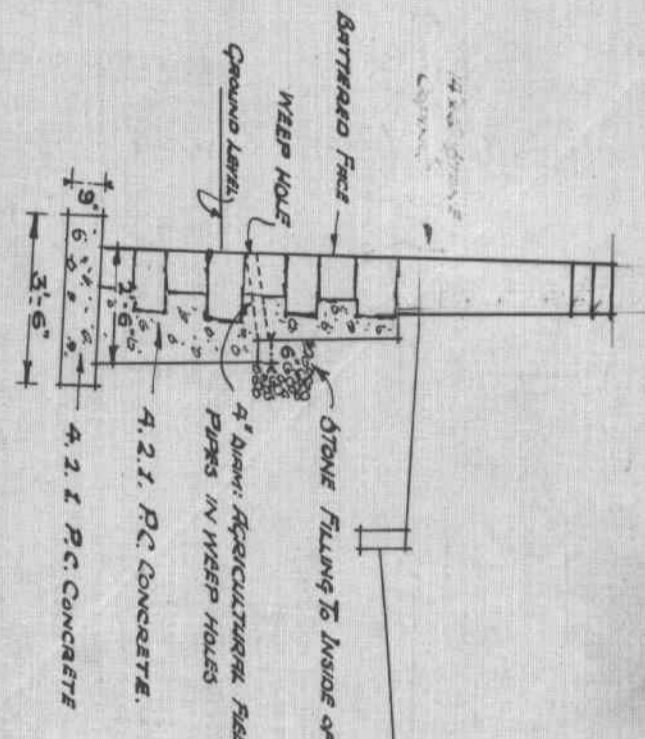
DETAILS of IRON FENCINGS

1/2" SCALE.

PLAN of NORTH APPROACH WALL.



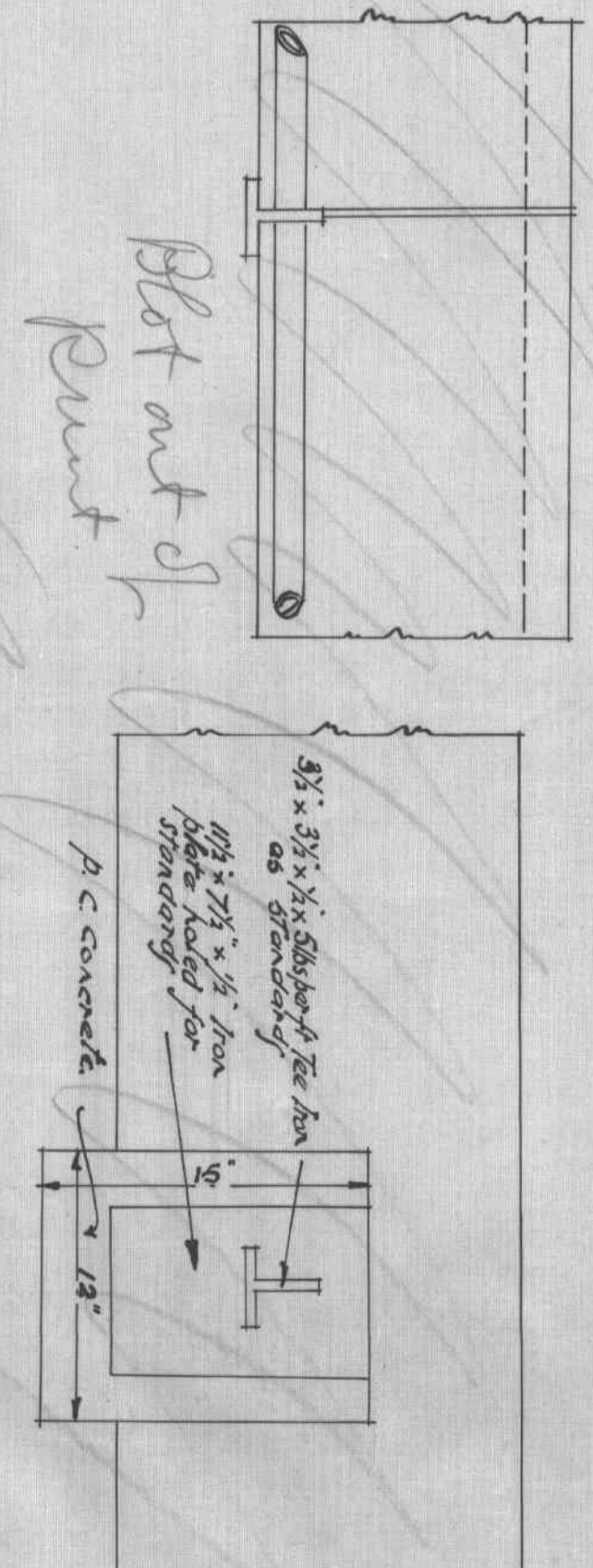
SECTION. A.B.



SECTION. C.D.

N.B. ALTERNATIVE SECTION SUEMING FENCING WALL ON TOP OF RETAINING WALL.

PLAN.



ERBYNS, F.S.I.-RANICE
COUNTY ENGINEERS,
46 CANNO STREET,
DUTHIN.

84/26/3

84/26/3
 DONT-y-CACCON

84/26/3

84/26/3