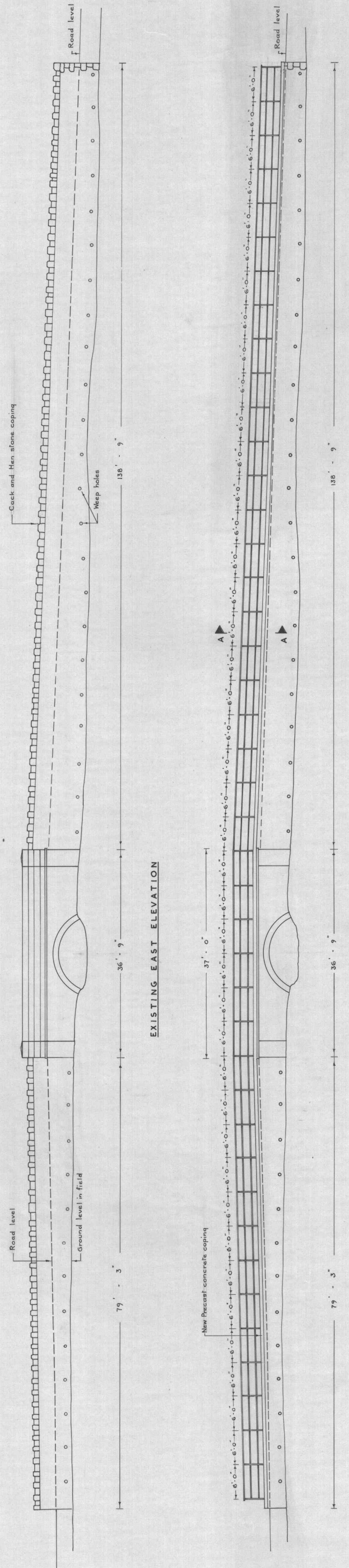
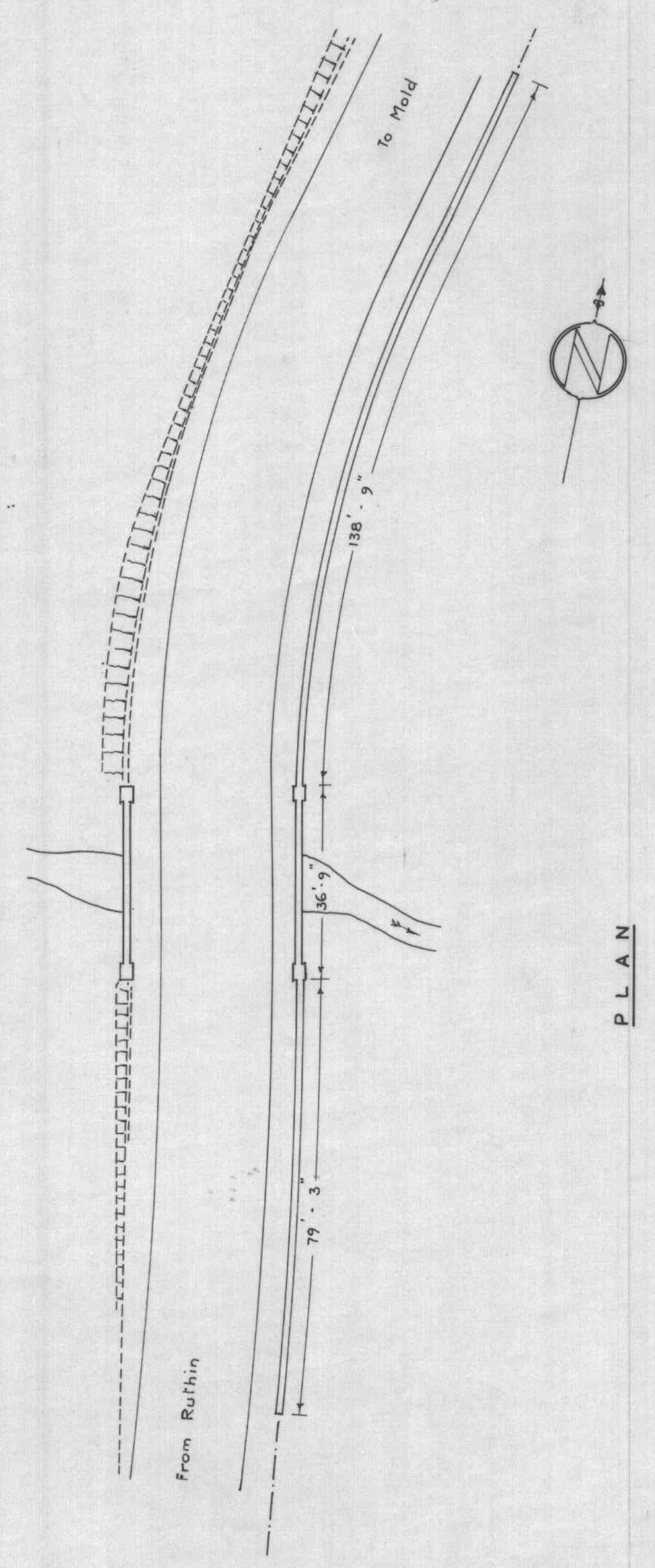


50/Land Plans  
84/26/4  
Pont Y Cawon

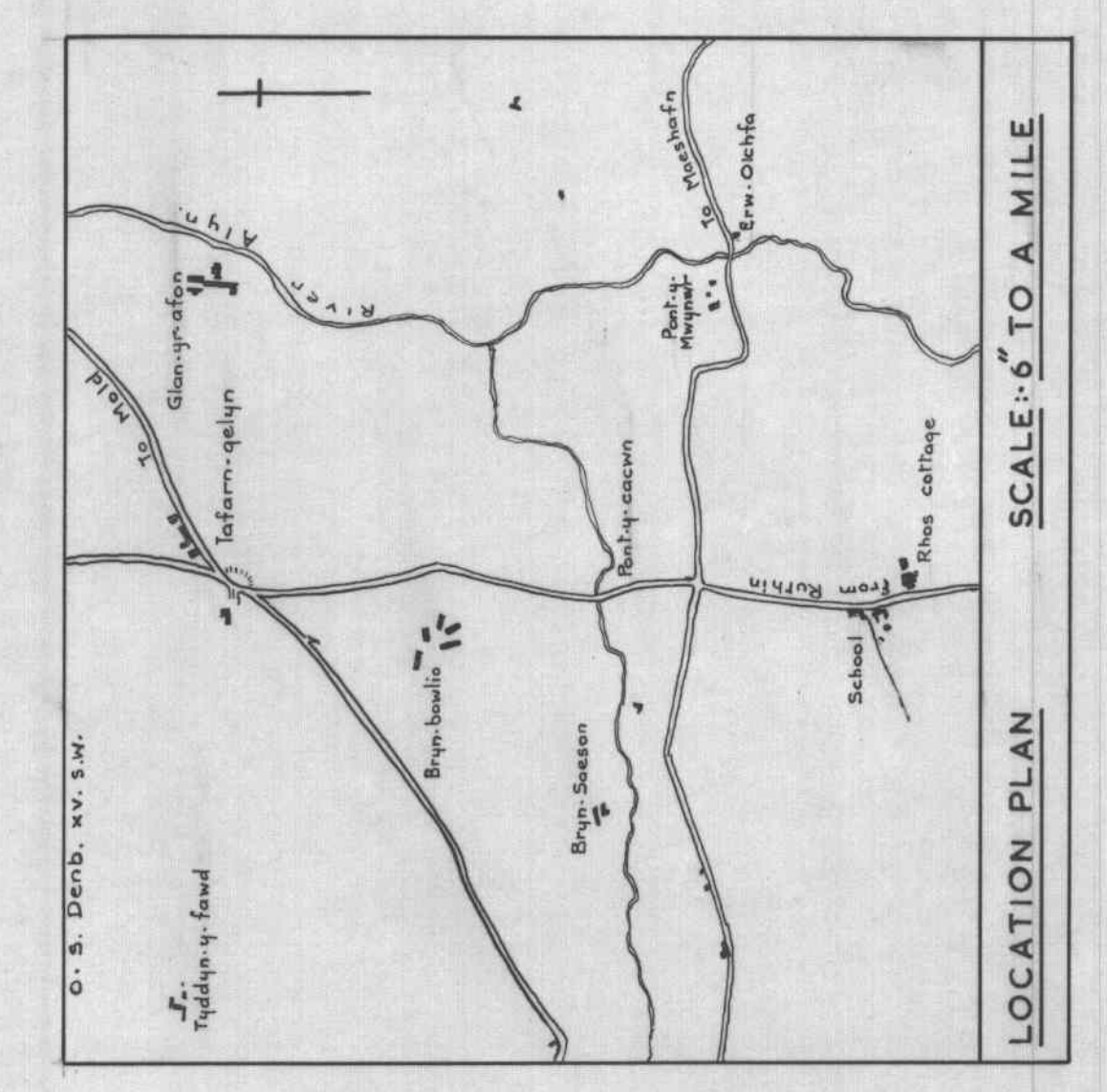
84/26/4



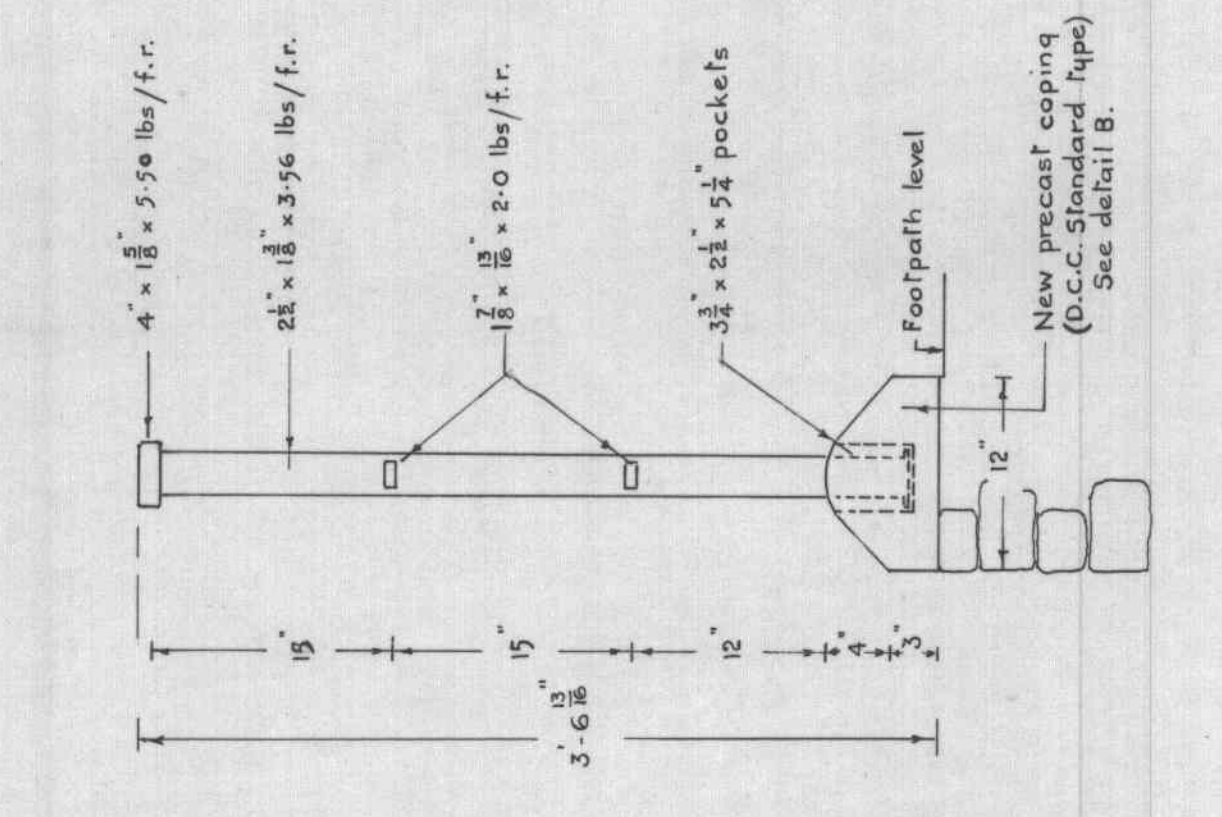
Note: West parapet of bridge to remain undisturbed.



PLAN SCALE: 1/250

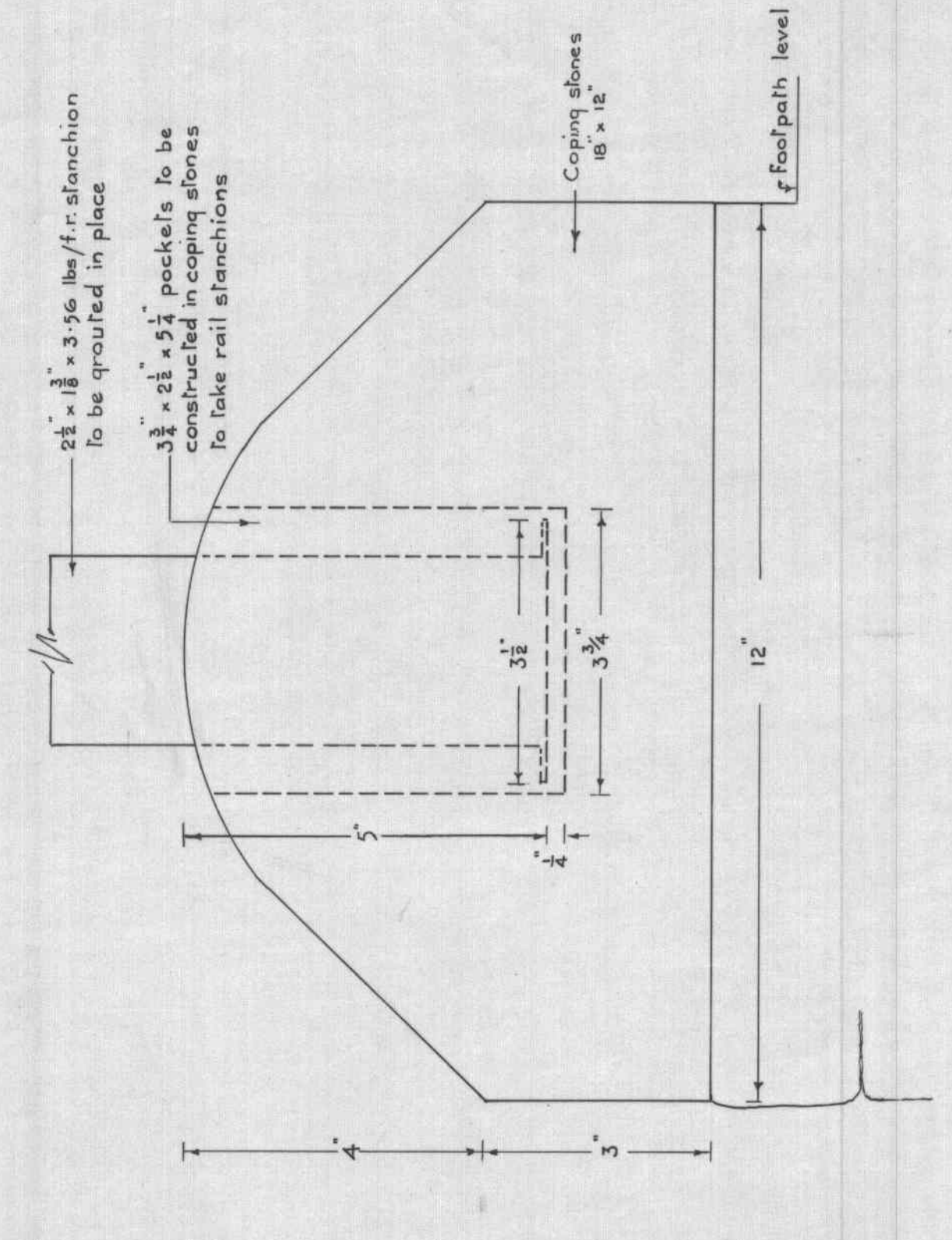


LOCATION PLAN SCALE: 1/250



SECTION A-A

SCALE: ONE INCH TO A FT.



DETAIL B

SCALE: HALF FULL SIZE

SCHEME K. A.  
TRACING DATE I. XII. 61.  
PRINT DATE

— COUNTY OF DENBIGH —  
ROUTE A.494. PROPOSED VISIBILITY IMPROVEMENT AT COUNTY BRIDGE No. 51, PONT-Y-CACWN

D. MORRIS, M.C. A.M. I.C. E.  
COUNTY SURVEYOR,  
RUTHIN.  
DRAWING No  
14 L/9/  
84/26/4