

Sign Ref TS C

Llun - Sad

Mon - Sat

11 am - 3 pm

Dim llwytho

Llun - Sad

No loading

Mon - Sat

11 am - 3pm

Llwytho yn unig

Llun - Sad

Loading only

Mon - Sat

7 - 11 am

Scheme Ref.	Pontypridd Town Centre	x-height	15.0
Sign Ref.	TS C	SIGN FACE	
Letter colour	BLACK	Width	260mm
Background	WHITE	Height	500mm
Border	BLACK	Area	0.13sq.m
Material	Class RA2 (12899-1:2007)		

Sign Ref TS E

Llun - Sad

Mon - Sat

11 am - 3 pm

Dim llwytho

Llun - Sad

No loading

Mon - Sat

11 am - 3pm

Dim aros

6 pm - 7 am

ac eithrio tacsis

No waiting

6 pm - 7 am

except taxis

Llwytho yn unig

Llun - Sad

Loading only

Mon - Sat

7 - 11 am

Scheme Ref.	Pontypridd Town Centre	x-height	15.0
Sign Ref.	TS E	SIGN FACE	
Letter colour	BLACK	Width	260mm
Background	WHITE	Height	500mm
Border	BLACK	Area	0.13sq.m
Material	Class RA2 (12899-1:2007)		

Scheme Ref.	Pontypridd Town Centre	x-height	15.0
Sign Ref.	TS E	SIGN FACE	
Letter colour	BLACK	Width	260mm
Background	WHITE	Height	755mm
Border	BLACK	Area	0.20sq.m
Material	Class RA2 (12899-1:2007)		

WELSH GOVERNMENT

TRANSPORT

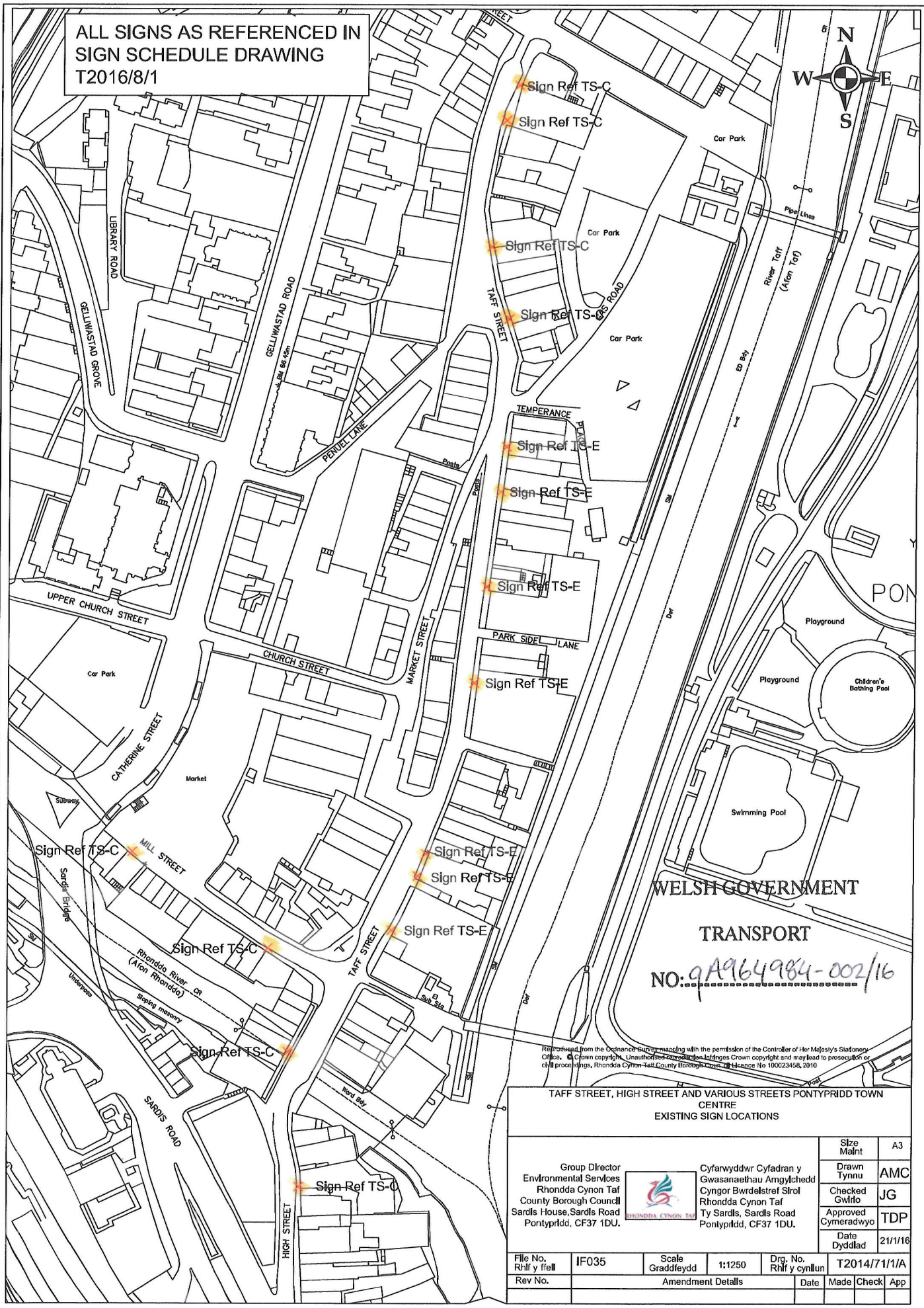
NO: 9A964984-001/16

For location of signs refer to drawing
T2014/71/1A

PONTYPRIDD TOWN CENTRE
REVIEW OF EXISTING RESTRICTIONS
SIGN SCHEDULE


Group Director Environmental Services, Rhondda Cynon Taf County Borough Council, Sardis House, Sardis Road, Pontypridd, CF37 1DU.	Cyfarwyddwr Cyfeirddwr Gwasanaethau Amgylchedd, Cynor Bwrddalestraf Srol Rhondda Cynon Taf, Ty Sardis, Sardis Road, Pontypridd, CF37 1DU.	Size A3	Drawn Tynnu	Checked Gwilio	Approved Cymeradwyo	Date Dyddiad	20/01/16
File No. Rhif y ffeil	IF035	Scales Graddfeydd	N.T.S	Drig. No. Rhif y cynllun	Date Made	Check App	
Rev No.		Amendment Details					

ALL SIGNS AS REFERENCED IN
SIGN SCHEDULE DRAWING
T2016/8/1



WELSH GOVERNMENT
TRANSPORT
NO: 9A964984-002/16

Reproduced from the Ordnance Survey map with the permission of the Controller of Her Majesty's Stationery Office. Crown copyright. Unauthorised reproduction infringes Crown copyright and may lead to prosecution or civil proceedings. Rhondda Cynon-Taf County Borough Council Licence No 100023458, 2010

TAFF STREET, HIGH STREET AND VARIOUS STREETS PONTYPRIDD TOWN CENTRE EXISTING SIGN LOCATIONS								
<div>Group Director Environmental Services Rhondda Cynon Taf County Borough Council Sardis House, Sardis Road Pontypridd, CF37 1DU.</div> <div></div> <div>Cyfarwyddwr Cyfadrn y Gwasanaethau Amgylchedd Cyngor Bwrdeistref Sirof Rhondda Cynon Taf Ty Sardis, Sardis Road Pontypridd, CF37 1DU.</div>				Size Maint	A3			
				Drawn Tynnu	AMC			
				Checked Gwifo	JG			
				Approved Cymeradwyo	TDP			
				Date Dyddiad	21/1/16			
File No. Rhif y ffeil	IF035	Scale Graddfeydd	1:1250	Drg. No. Rhif y cynllun	T2014/71/1/A			
Rev No.	Amendment Details				Date	Made	Check	App