

# 2021 Wales Greenhouse Gas Emissions

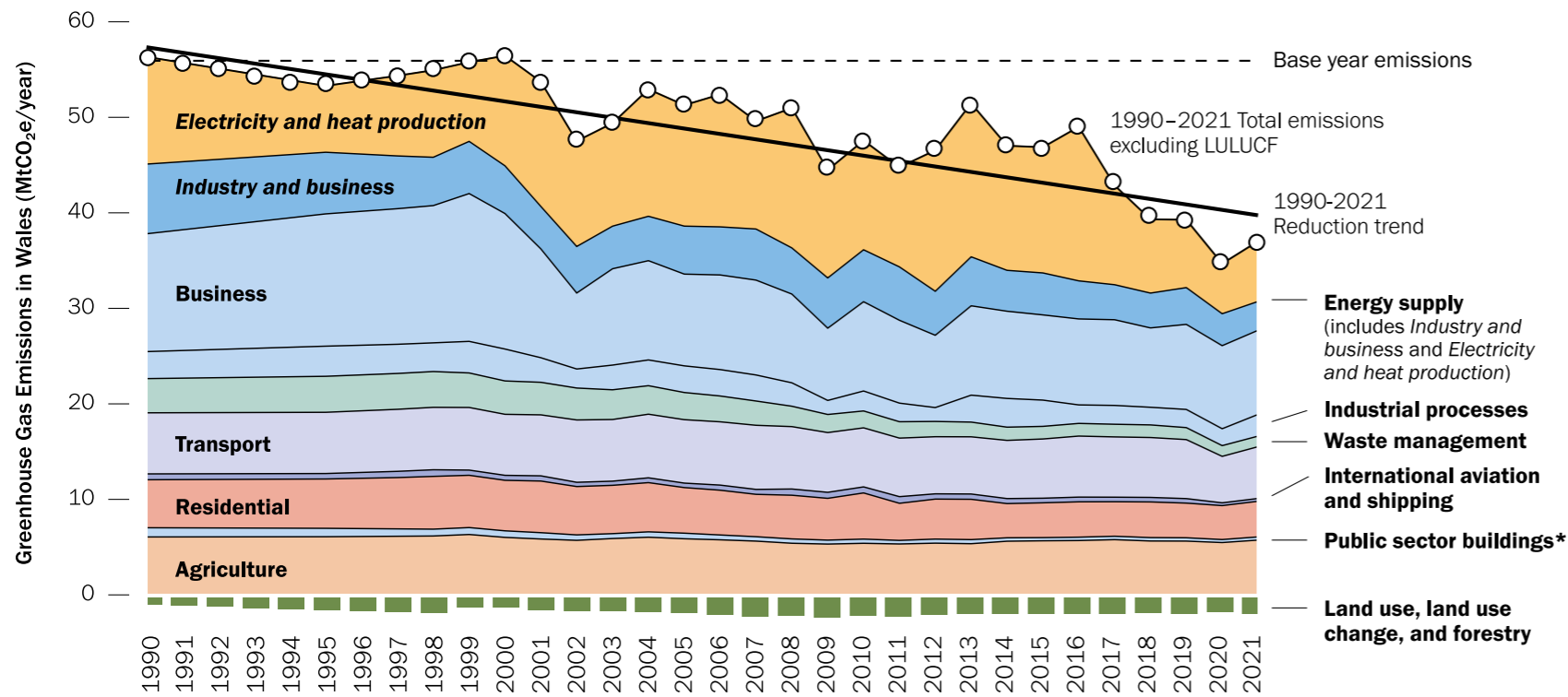


#SeroNetCymru  
#NetZeroWales



Llywodraeth Cymru  
Welsh Government

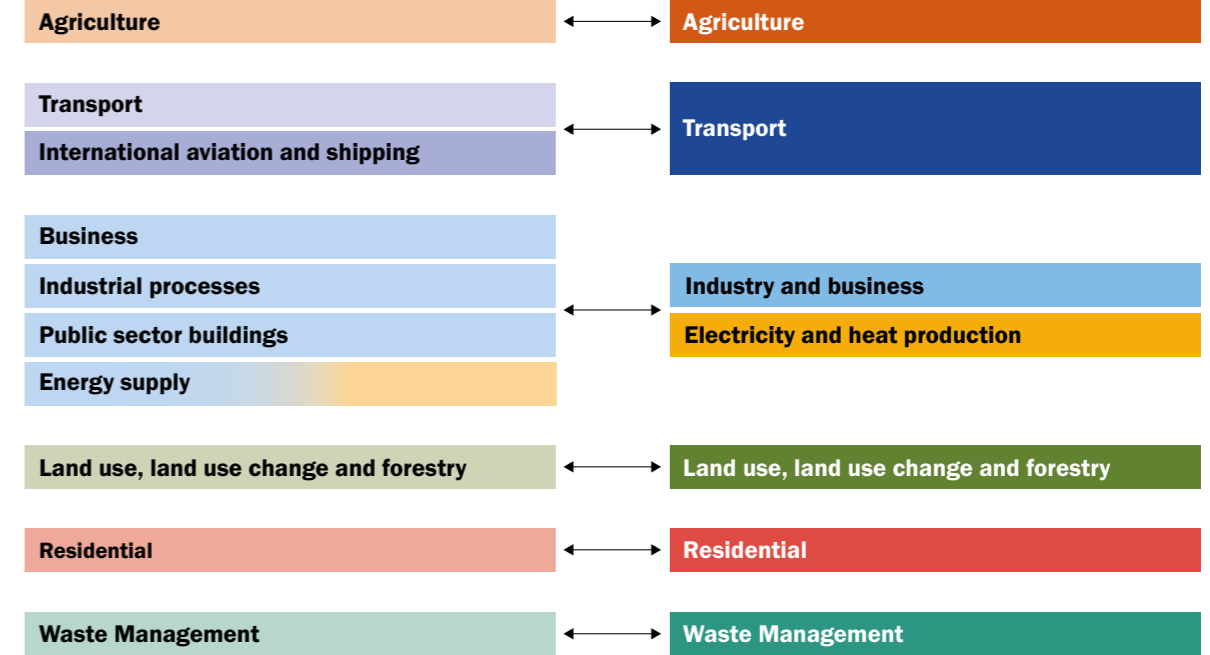
## Greenhouse Gas Emissions in Wales



\*The Public sector in the Greenhouse Gas Inventory is solely represented by emissions from public sector buildings.

The sector definition of the Net Zero Wales Plan (Carbon Budget 2 - CB2) varies from both the Greenhouse Gas Inventory (GHGI) and the Low Carbon Delivery Plan (Carbon Budget 1 - CB1).

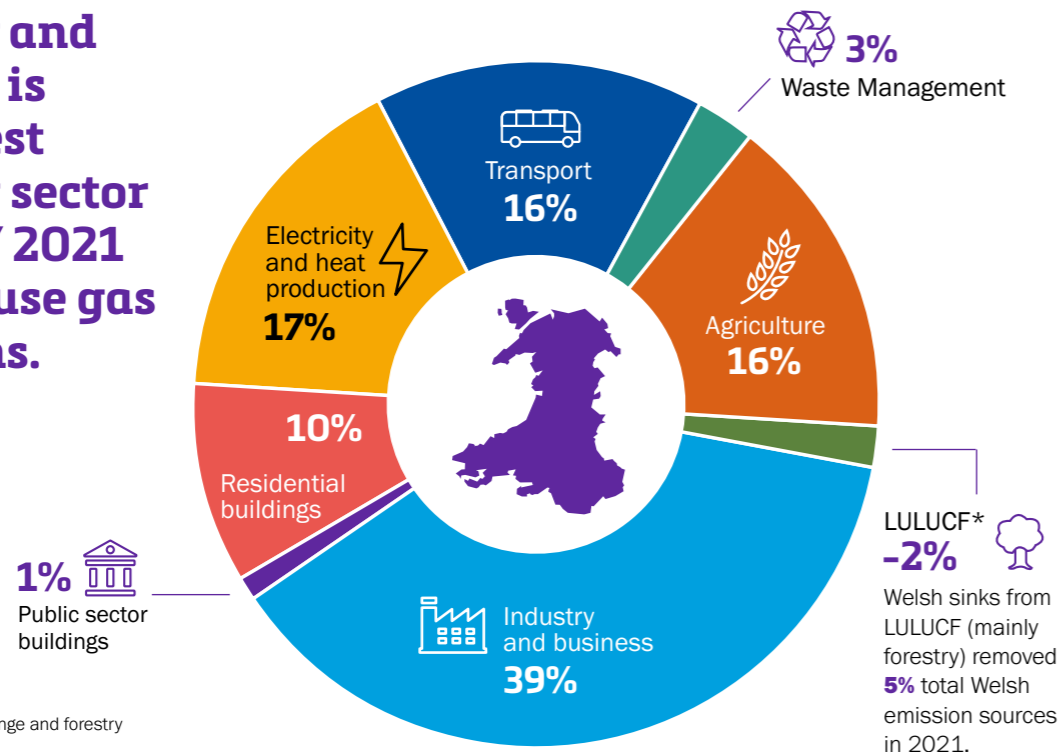
### GHGI Sector



## Change in greenhouse gas emissions



Industry and business is the largest emitting sector of Wales' 2021 greenhouse gas emissions.



\* Land use, land use change and forestry

## Sources of emissions Net Zero Wales Plan (CB2)

	1990 (baseyear) -2021	2020-2021
Agriculture	-5.4%	+4.7%
Industry and business	-37.2%	+2.1%
Public sector buildings	-65.3	+6.2%
Residential buildings	-25.8%	+5%
Electricity and heat production	-43.9%	+20.2%
Transport	-18.4%	+10.9%
Waste management	-69.2%	-1.7%

## Size of emissions sink\* Net Zero Wales Plan (CB2)

	1990 (baseyear)	2020	2021
LULUCF	-2.3 MtCO <sub>2e</sub>	-1.97 MtCO <sub>2e</sub>	-2.07 MtCO <sub>2e</sub>

\* The LULUCF sector has remained a net removal of emissions throughout the whole time-series. The emissions sink from LULUCF has reduced in size by 0.24 MtCO<sub>2e</sub> between 1990 and 2021, and it has increased in size by 0.10 MtCO<sub>2e</sub> between 2020 and 2021.