

SUMMER UPDATE 2025



Llywodraeth Cymru
Welsh Government



GOV.WALES

Addington Fund

01926 620 135

Animal and Plant Health Agency (APHA)

03000 200 301

Badger Found Dead Survey

0808 169 5110

British Cattle Movement Service (BCMS)

0345 050 3456

Control of Agriculture Pollution Regulation Helpline operated by ADAS

01974 847 000

DPJ Foundation

0800 587 4262

EID Cymru

01970 636 959

Farming Connect

03456 000 813

Farming Community Network (FCN)

03000 111 999

Lantra Wales

01982 552 646

Natural Resources Wales (NRW)

0300 065 3000

Quality Welsh Food Certification Body

01970 636 688

Royal Agricultural Benevolent Institution (RABI)

0800 188 4444

RPW Customer Contact Centre

0300 062 5004

Samaritans

116 123

TB Helpline

0800 496 1439

Tir Dewi

0800 121 4722

KEY DATES

03 MAR –

Woodland Creation Grant

21 NOV

21 JUL –

Small Grants –

30 SEP

Woodland Creation

11 AUG –

Small Grants –

19 SEP

Environment (Carbon)

You can now follow us for regular news and updates on topics relating to rural affairs on our brand-new Facebook page.

Search for **Cymru Wledig/Rural Wales** on Facebook or visit:
facebook.com/cymruwledig.



The information in the Summer Update was accurate as of its publication date (16 July 2025). For the most current dates, news, and information, please visit the Welsh Government website: **GOV.WALES.**

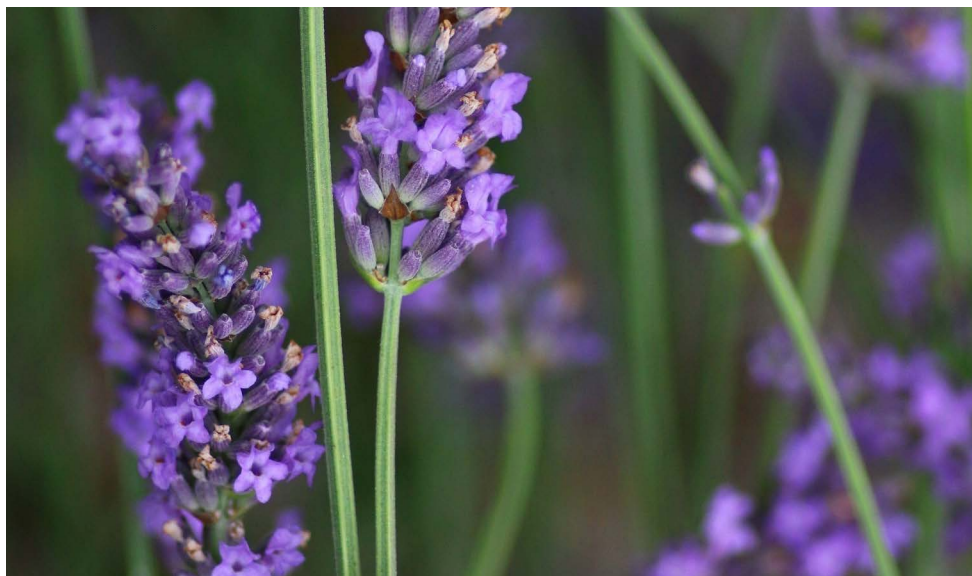
OGL © Crown copyright 2025

WG52432

Digital ISBN: 978-1-80633-141-3

Print ISBN: 978-1-80633-140-6

CONTENTS



04

SUSTAINABLE FARMING SCHEME

05

RURAL PAYMENTS WALES

07

NEW AGRICULTURAL MINIMUM WAGE
RATES FOR 2025–2026 IN WALES

08

WOODLAND CREATION

09

BOVINE EID CONSULTATION

10

EID CYMRU

12

NOTIFIABLE DISEASE OUTBREAKS
IN EUROPE

13

COME AND SEE US AT THE SHOWS

14

NATURAL FLOOD MANAGEMENT
UPDATE

15

COMMUNITY FOOD AND DRINK
STRATEGY

16

WALES FARM SAFETY PARTNERSHIP

17

FARM LIAISON SERVICE

18

FARMING CONNECT

20

WHERE CAN I GET HELP?

SUSTAINABLE FARMING SCHEME

The Sustainable Farming Scheme is designed, in collaboration, to help support you in the ongoing sustainable production of food, while addressing the impacts of the climate and nature emergency.

The Scheme contains all the information you need to prepare; including the Universal Actions, eligibility criteria, Scheme Requirements and payment details.

It lists the Optional and Collaborative Actions we intend to introduce in 2026 to support those farmers who want to build on their Universal Actions and go further.

It includes our plans for phasing out the Basic Payment Scheme over the Transition Period starting next year.

The Sustainable Farming Scheme starts on 1 January 2026.

You can find out more about the scheme by visiting gov.wales/sustainable-farming-scheme or by scanning the QR Code



RURAL PAYMENTS WALES



Invitations to Migrate to GOV.UK One Login

Access to RPW Online has changed and the Government Gateway service is being replaced with the new GOV.UK One Login service.

This change will improve our digital security and enable the implementation of new features to RPW Online, which includes changes to our roles and permissions functions, enabling you to have more flexibility and control of your online CRN Account.

We are in the process of writing to RPW Online Users inviting them to migrate to the new GOV.UK One Login service, this invitation will appear in your Customer Contact Messages. The invites are being issued in batches, so please check your messages regularly to ensure the invitation is not

missed. There will be support available from our Customer Contact Centre to assist in the migration process.

To migrate to GOV.UK One Login each individual registered on your CRN and needs access to your RPW Online account, will require their own email address.

You do not need to migrate to GOV.UK One Login until you have been invited.

We would like all our customers to be using GOV.UK One Login by the end of the year and it is our intention to decommission the Government Gateway service.

Full Guidance on how to migrate will be available online and the link to the guidance will be contained in the invitation.

Transfer of BPS Entitlements 2026

The Welsh Government is developing proposals for a transition from BPS to the Sustainable Farming Scheme from 2026. As a result, the BPS entitlement transfer window closed after 15 May 2025 and will remain closed until such time as Welsh Ministers have decided on transfer and lease of BPS entitlements for the 2026 scheme year and beyond.

Data Confirmation

The Sustainable Farming Scheme (SFS) Data Confirmation form will be available on RPW Online from 17 July 2025 to 31 October 2025.

The form will include updated maps and information that details the

habitats, tree cover, designated sites and historic environment features on your farm, as currently held in the RPW mapping system.

The mapping has been created using your land declarations, previously published habitat maps, updated earth imagery and submissions from Data Confirmation 2024.

Data Confirmation is your opportunity to review the maps and confirm, amend, remove or add information to correctly show the habitats, tree cover and woodland on your farm, to ensure they are accurately reflected in advance of SFS which begins on 1 January 2026.

Guidance on how to complete your Data Confirmation form will be available on the RPW website.



NEW AGRICULTURAL MINIMUM WAGE RATES FOR 2025–2026 IN WALES

The Welsh Government has made important updates to the Agricultural Minimum Wage (AMW) for 2025–2026 – bringing meaningful change for agricultural, horticultural, and forestry workers across Wales

Recommended by the Agricultural Advisory Panel, these reforms reflect the realities of today's economy and the growing need for a skilled, fairly paid rural workforce.

Implemented through the Agricultural Wages (Wales) Order 2025, the changes aim to protect workers' rights while supporting the long-term sustainability of the sector. And remember – **it's a criminal offence not to pay agricultural workers at least the AMW.**

What's Changing?

Higher Wages Across the Board

From 1 April 2025, all worker grades will see a pay rise. For example, Agricultural Development Workers aged 21+ will earn a minimum of £12.21 per hour, and Agricultural Managers will receive at least £16.23 per hour. Apprenticeship rates are also up, in line with national standards.

Boosted Allowances

Allowances for dog handling, on-call duties, and night work have increased by 10%. Birth and adoption grants now stand at £87.85 per child.



Accommodation & Overtime Reforms

Employers can offset accommodation costs at updated rates. Overtime will now only apply after agreed weekly hours are completed – offering flexibility without compromising fairness.

Training & Leave Updates

Employers may recover training costs if a worker leaves within 12 months of completing employer-funded training. Statutory unpaid leave, including Carer's Leave, is now fully recognised.

Simplified Holiday Pay

Holiday pay calculations are now easier for part-year and irregular hours workers, aligning with updates to the Working Time Regulations.

More detailed information and guidance is available at gov.wales/agricultural-advisory-panel-wales/legislation-and-guidance.

WOODLAND CREATION

Free Advice on Woodland Creation

Are you thinking of creating woodland on your farm? If so, are you aware there's a free 'pre-application service' available from NRW.

This 'pre-application service' is designed to offer information about the suitability of your land for woodland creation. To access the free advice or for further information email GwirioCynllunCoetir@cyfoethnaturiolcymru.gov.uk.

Woodland Creation Schemes

Following receiving pre-application advice you are able to apply to the Woodland Creation Planning Scheme. The Scheme provides funding of £1,000 to £5,000 to appoint a Registered Woodland Planner to offer advice and develop a woodland creation plan for you. The Scheme is open for Expressions of Interest throughout the year, with selections undertaken monthly. Once a woodland creation plan has been verified by Natural Resources Wales (NRW), you can apply for a **Woodland Creation Grant**.

There is also the Small Grants – Woodland Creation scheme for planting of less than 2 Hectares. There are several windows for applications throughout the year, dates are available in the key dates section and on the Welsh Government website: gov.wales/rural-schemes-application-dates. This grant offers support for planting on eligible land which is

included in the low sensitivity area shown on the Woodland Opportunities Map (WOM): datamap.gov.wales/maps/small-grants-woodland-creation/. There is no requirement for a pre-app or verified woodland plan.

For an overview of our Woodland Creation Grants visit gov.wales/woodland-creation-grant-schemes-booklet. Native deciduous trees which are in the ground and under management by 15 May 2026 will contribute towards the Sustainable Farming Scheme (SFS) requirement to have 10% habitat on each farm. Tree and hedgerow planting completed from 1 April 2022 will be considered as progress in implementing your SFS Tree and Hedgerow Planting Opportunity Plan.



BOVINE EID CONSULTATION

Have Your Say on Bovine EID in Wales

We're asking for your views on plans to bring in Bovine Electronic Identification (Bovine EID) in Wales. We want to hear from farmers like you – your feedback will help us decide how to move forward.

Key points from the consultation are:

- ✓ For all calves born after the introduction of Bovine EID, at least one ear tag applied must be a statutory EID tag
- ✓ Implementation in Wales is not expected to be until 2027 at the earliest
- ✓ Tag frequency for mandatory Bovine EID is to be agreed
- ✓ Bovine EID tags can be read visually and will be available as a flag, button or metal tag type
- ✓ Cattle identification numbering format will change with the introduction of Bovine EID

- ✓ Bovine EID tags will be WYSIWYG (What You See Is What You Get – number programmed on the chip will be the same number printed on the tag)
- ✓ No current plans to retag the existing herd
- ✓ Working with tag suppliers to agree timelines for statutory EID tag availability.

Your input is needed to help shape the future of cattle identification in Wales. To respond to the consultation please visit: gov.wales/implementation-bovine-electronic-identification-bovine-eid-wales or scan the QR code before **14 August 2025**.



EIDCYMRU

Getting the most out of your EIDCymru account

Registering for an EIDCymru online account has many advantages, with it you can:

- 1 **Create** a movement
- 2 **Confirm** a movement – save a stamp
- 3 **Check** all movements for accuracy
- 4 **Compliance** – help prepare for an inspection
- 5 **Complete** the Sheep and Goat Annual Inventory.

Once registered, log in to your EIDCymru online account, using your username or email address and your password. You will see your dashboard where there are many functions available for you to use.



EIDCymru

[My dashboard](#)[My account](#)[My inventory](#)[Help and information](#)[Contact us](#)[Log out](#)

Cy

Create a movement

Set up a movement happening in the future

Set up >

Report a movement that has taken place

Report >

Accept movements


6 Accept movements >

Future and draft movements

Movement records

Check movements for accuracy

One advantage of registering with EIDCymru is being able to check your sheep and goat movements.

 [Movement records](#)

Select 'Movement Records' on the dashboard to view your animal movements. You can check each record held on EIDCymru with the movements held in your **Sheep and Goat Record** book. By selecting an individual movement, you can see the complete movement detail containing the individual tag list. If you find any discrepancies, you can query the movement and provide your reasons in the text box.



Compliance – help prepare for an inspection

Your EIDCymru records could be used as an aid to help you with an inspection.

You can use Movement Records and your Annual Inventory submissions to reconcile with the details held in your Sheep and Goat Record book.

To view your Annual Sheep and Goat Inventory, click on 'My Inventory' at the top of the page.

EIDCymru

[My dashboard](#) [My account](#) [My inventory](#) [Help and information](#)

Create a movement

Set up a movement happening in the future

Report a movement that has taken place

Accept movements

6 Accept movements

Future and draft movements

My inventory

Your 'My Inventory' page will provide links which you can click to view your inventory figures for previous years.

[My inventory](#) [Help and information](#) [Contact us](#) [Log out](#)

Manage your account

[Change your details](#)
[Change password](#)
[Default options](#)
[View holdings](#)
[View inventory](#)

Completed Inventories

[December 2024](#)
[January 2024](#)

Help and Support

Should you require any help or assistance, please contact EIDCymru on 01970 636959 or by email: contact@eidcymru.org.

EIDCymru have a stand at the Royal Welsh Show, please call in and meet the staff.

NOTIFIABLE DISEASE OUTBREAKS IN EUROPE

Notifiable Diseases in Europe: Safeguard Measures

- ✓ Wales has introduced safeguard measures to restrict relevant commercial and personal imports of products from a range of EU countries. This is part of a GB wide response to several outbreaks of highly infectious notifiable diseases, several of which have not been seen in the EU for decades.
- ✓ These measures include restricting relevant goods following the recent Foot and Mouth Disease (FMD) outbreaks in Germany, Hungary and Slovakia; outbreaks of Peste des Petits Ruminants in Bulgaria, Romania, Greece and Hungary; and African Swine Fever in Romania, Germany and Italy.

What steps are being taken to protect Welsh livestock from FMD?

- ✓ Robust contingency plans are in place to protect the farming industry and the wider economy from an incursion of this devastating disease into Great Britain.
- ✓ There are restrictions in place on the commercial import of cattle, pigs, sheep and most ruminant and porcine products (such as fresh meat and dairy products) from Hungary, Slovakia and Austria. Following an assessment, the United Kingdom has now recognised the entire territory of Germany as FMD-free without vaccination.

- ✓ A ban on personal imports of meat and dairy products extended to cover all EU countries (including EU and EFTA states, the Faroe Islands and Greenland) came into force on 12 April 2025.
- ✓ Full details of all current restrictions and certain exemptions can be found at gov.uk/guidance/imports-and-exports-of-animals-and-animal-products-topical-issues#peste-des-petits-ruminants-import-restrictions-european-union.

How can you protect your farm?

- ✓ Welsh Government urges all livestock keepers to exercise the utmost vigilance for signs of disease, follow scrupulous biosecurity and report any suspicion of disease immediately to the Animal and Plant Health Agency.
- ✓ Wales' Chief Veterinary Officer has published advice on action livestock keepers and businesses can take to maintain the highest levels of biosecurity: gov.wales/calls-vigilance-following-foot-and-mouth-disease-case-germany.
- ✓ Be alert for illegally smuggled animal products. These present a known risk.

For the latest information on FMD in Europe visit gov.uk/government/news/foot-and-mouth-disease-latest-situation.

COME AND SEE US AT THE SHOWS



Come and see us at agricultural shows this summer.

Welsh Government staff will be at the Welsh Government Pavilion during the Royal Welsh Show which will take place from Monday 21 July until Thursday 24 July. Welsh Government Forestry staff will also have a stand in the Forestry area of the Royal Welsh Show discussing all things Trees and Timber.

Farm Liaison Service Staff and Farming Connect staff will also be at the following shows:

Cardigan County Show	Saturday 2 August
Anglesey County Show	Tuesday 12 and Wednesday 13 August
Pembrokeshire County Show	Wednesday 20 and Thursday 21 August
Denbigh and Flint Show	Thursday 21 August
Merioneth County Show	Wednesday 20 August
Usk Show	Saturday 13 September

Staff will be available to provide you with the most up to date information on various topics such as the Sustainable Farming Scheme, agricultural support schemes, Woodland creation schemes, Agricultural Pollution Regulations and EID Cymru.

Come along and say hello.

NATURAL FLOOD MANAGEMENT UPDATE

The Welsh Government has continued to make progress towards ensuing Natural Flood Management (NFM) is considered when implementing flood risk management. Building on the findings of the 2023 Review of Natural Flood Management in Wales (gov.wales/review-natural-flood-management-wales-final-report), we're continuing to embed nature-based solutions across policy, funding, and delivery frameworks.

The NFM Pilot Programme (2020–2022) laid the groundwork for the subsequent NFM Accelerator Programme (2023–2025). We have already seen how the programme is successfully encouraging collaboration between Risk Management Authorities (RMAs NRW and local authorities), landowners, and communities. However, we understand there are still barriers to delivery, such as licensing complexities and uncertain funding streams.

To support evidence-based decision-making on implementing NFM, we've published two interactive mapping tools: the NFM Prioritisation

Map (datamap.gov.wales/maps/prioritisation-map-for-natural-flood-management/) and the NFM Scheme Status Map (datamap.gov.wales/maps/natural-flood-management-scheme-status-map/). These tools support in decision making for NFM by identifying potential catchment areas and track scheme progress.

We have worked with partners including local authorities, Natural Resources Wales and Aberystwyth University/Farming Connect to develop an NFM e-learning module for land managers, due to its close links to the Sustainable Farming Scheme. This resource aims to improve understanding of NFM interventions – from leaky dams to riparian planting – and their role in reducing flood risk while delivering wider ecosystem benefits.

Looking ahead, we've secured £2 million in funding for the current NFM Programme 2025–2026, reinforcing our commitment to NFM delivery. Our focus remains on embedding NFM into long-term planning, ensuring it continues to play a vital role in building climate resilience across Wales.



COMMUNITY FOOD STRATEGY: STRENGTHENING LOCAL FOOD SYSTEMS IN WALES

This May saw the launch of the **Community Food Strategy**. This is a comprehensive Welsh Government initiative designed to promote and strengthen local and community food systems across Wales.



At its core the strategy outlines how it will work in partnership to promote and strengthen the local and community food system in Wales; increasing the availability and consumption of locally sourced, healthier and sustainable food; and inspire improvements in well-being within our communities.

The strategy recognises that food affects all aspects of Welsh life – underpinning physical and mental health, economic prosperity, and community cohesion.

What makes this strategy particularly effective is its collaborative approach. A dedicated ministerial advisory group will guide implementation, bringing together senior stakeholders and key delivery partners to measure progress. At the local level, it supports initiatives like Food Cardiff, which coordinates over 250 members including businesses, community organisations, and individuals.

The Community Food Strategy aligns with other Welsh Government initiatives, including the Sustainable Farming Scheme and the Child Poverty Strategy. The strategy includes a commitment to work closely with the Future Generations Commissioner to help public bodies to embed food as a priority within public services delivery across education, procurement, tourism, and community spaces, and so create a comprehensive framework for positive change.

Through supporting local food festivals, community growing schemes, nutrition education and local supply chains, the strategy addresses immediate food needs while building long-term community resilience and well-being for a healthier Wales.



YOUR FARM DEPENDS ON YOU: STAY SAFE

An ATV accident can change your life forever

ATVs can be incredibly dangerous. Accidents involving these vehicles can have severe consequences, often leading to life-altering injuries or even fatalities.

To minimise the risk of ATV accidents, it's essential to:

- › **Wear appropriate safety gear:**
Helmets, protective clothing, and boots can help reduce the severity of injuries.
- › **Receive proper training:**
Understanding how to operate an ATV safely is crucial.
- › **Follow manufacturer's guidelines:**
Adhere to the ATV's weight and age restrictions.
- › **Ride responsibly:**
Avoid dangerous terrain, excessive speed, and riding under the influence of alcohol or drugs.

**PARTNERIAETH
DIOGELWCH AR
FFERMYDD CYMRU**



**WALES
FARM SAFETY
PARTNERSHIP**

**Working together to
make farming safer**



**Ariennir gan
Lywodraeth Cymru
Funded by
Welsh Government**

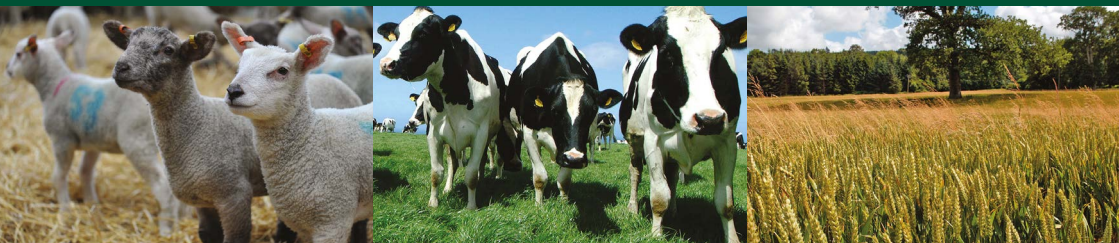
Farm Liaison Service

A fully funded support service



Llywodraeth Cymru
Welsh Government

We provide customers with guidance in respect of all farming and rural schemes and policy areas administered by Welsh Government.



We are here to help so please get in touch.

ALL WALES

Rita Jones

Cymraeg

07971 048619

rita.jones@gov.wales

SOUTH EAST WALES

Jane Walters

07721 894875

jane.walters@gov.wales

Caitlin Harley

Cymraeg

07890 663351

Caitlin.harley@gov.wales

SOUTH WEST WALES

Catrin Jones

Cymraeg

07968 159637

catrin.jones3@gov.wales

Caitlin Harley

Cymraeg

07890 663351

Caitlin.harley@gov.wales

NORTH EAST WALES

Armando Morgan

Cymraeg

07774 950639

armando.morgan@gov.wales

NORTH WEST WALES

Janet Phillips

Cymraeg

07774 950654

janet.phillips@gov.wales

MID WALES

Steve Meredith

07721 894873

stephen.meredith@gov.wales

Eve Bridgewater

07721 894869

eve.bridgewater@gov.wales

Jane Walters

07721 894875

jane.walters@gov.wales

FLS

Tim Cysylltwyr Fferm
Farm Liaison Service

FARMING CONNECT

Succession Planning Support



Step 1

SUCCESSION REVIEW

Take stock of your assets and understand your current tax position with a qualified solicitor.

Eligibility: All businesses eligible. This service must be undertaken by the farm owners who own the assets. Those assets could include land, livestock, deadstock or diversification assets. The estate of up to 2 individuals can be reviewed.



Step 2 (Optional Extra)

FACILITATED FAMILY SUCCESSION MEETING

Facilitated meeting(s) with all members of the family to understand the wishes and intentions of each individual. This does not include any legal or business advice. Includes the preparation of meeting minutes and action points.



Step 2

SUCCESSION PLAN

Develop a comprehensive succession plan as part of the Farming Connect Advisory Service, with funding available up to £1400*.

Eligibility:

**Funding available subject to individual business' Advisory Service allocation*



Step 3

LEGAL SERVICES

Legal advice / services to implement the succession plan. This may include drafting new partnership agreements, wills, power of attorney and undertaking asset transfers.

Up to £1000 contribution per business. Total cost of work may exceed this and any private contribution must be agreed prior to work commencing.

For more information contact your local Development Officer, or call the Service Centre.



Ariennir gan
Lywodraeth Cymru
Funded by
Welsh Government

03456 000 813

We welcome calls in Welsh

gov.wales/farmingconnect



FARMING
connect
cyswllt
FFERMIO

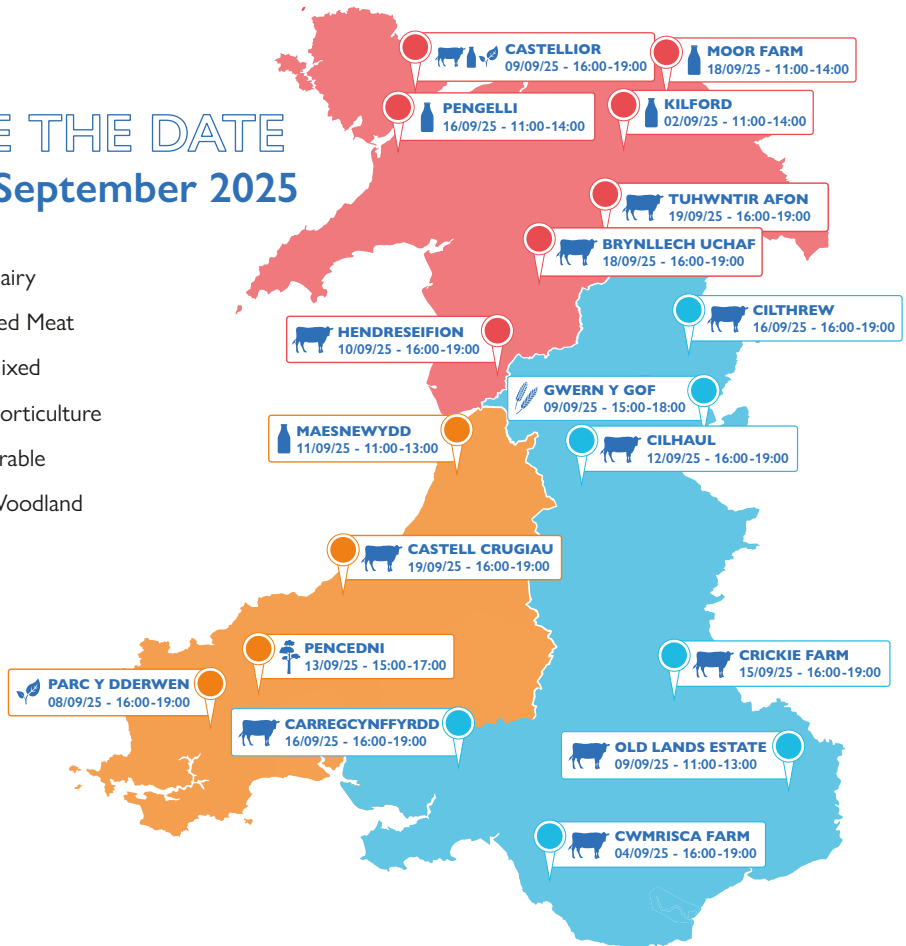
OUR FARMS

Farm Walks - September 2025

Join Farming Connect for an unique series of farm walks across the Our Farms Network this September.

SAVE THE DATE
02-19 September 2025

-  Dairy
-  Red Meat
-  Mixed
-  Horticulture
-  Arable
-  Woodland



For a full list of Farming Connect events, visit our website.



Ariennir gan
Lywodraeth Cymru
Funded by
Welsh Government



FARMING
connect
cyswllt
FFERMIO

WHERE CAN I GET HELP?

GET IN TOUCH WITH US

FARMWELL WALES

www.farmwell.wales
help@fcn.org.uk

FARMING CONNECT

03456 000 813

THE DPJ FOUNDATION

07860 048799 (text only)

THE ADDINGTON FUND

01926 620135

TIR DEWI

0800 1214722
mail@tirdewi.co.uk

FARM LIAISON SERVICE

0300 0255449
farmliaisonservice@gov.wales

ROYAL AGRICULTURAL BENEVOLENT INSTITUTION

0800 188 4444
help@rabi.org.uk

THE FARMING COMMUNITY NETWORK

03000 111 999
help@fcn.org.uk

RPW CUSTOMER CONTACT CENTRE

0300 062 5004

MIND CYMRU

0300 123 3393
info@mind.org.uk

SAMARITANS

116 123
jo@samaritans.org