

WINTER UPDATE 2025



Llywodraeth Cymru
Welsh Government



GOV.WALES

Addington Fund
01926 620 135

**Animal and Plant Health
Agency (APHA)**
03000 200 301

Badger Found Dead Survey
0808 169 5110

**British Cattle Movement
Service (BCMS)**
0345 050 3456

**Control of Agriculture Pollution
Regulation Helpline operated
by ADAS**
01974 847 000

DPI Foundation
0800 587 4262

EID Cymru
01970 636 959

Farming Connect
03456 000 813

Farming Community Network FCN)
03000 111 999

Lantra Wales
01982 552 646

Natural Resources Wales (NRW)
0300 065 3000

**Quality Welsh Food
Certification Body**
01970 636 688

**Royal Agricultural Benevolent
Institution (RABI)**
0800 188 4444

RPW Customer Contact Centre
0300 062 5004

Samaritans
116 123

TB Helpline
0800 496 1439

Tir Dewi
0800 121 4722

KEY DATES

29 SEPT 2025 – Agriculture Diversification
05 DEC 2025 and Horticulture

27 OCT 2025 – Woodland Restoration
20 FEB 2026 Scheme

03 NOV 2025 – Small Grants –
12 DEC 2025 Environment (Carbon)

03 NOV 2025 – Small Grants – Horticulture
16 JAN 2026 Start up (Window 4)

01 JAN 2026 Sustainable Farming
Scheme

01 JAN 2026 – Woodland Creation
31 DEC 2026 Planning Scheme

01 JAN 2026 – Woodland Restoration
31 DEC 2026 Scheme

05 JAN 2026 – Small Grants – Environment
20 FEB 2026 (Landscape and Pollinators)

12 JAN 2026 – Small Grants – Efficiency
27 FEB 2026

02 MAR 2026 – Small Grants
22 MAY 2026 Woodland Creation

02 MAR 2026 – Woodland Creation Grant
20 NOV 2026

Application dates for all agricultural support schemes can be found at: gov.wales/rural-schemes-application-dates

Details of all guidance documents for the Agricultural Support Schemes can be found at gov.wales/rural-grants-payments shortly before the round becomes available to apply.

The information in the Winter Update was accurate as of its publication date (17/11/2025). For the most current dates, news, and information, please visit the Welsh Government website: [GOV.WALES](https://gov.wales).

CONTENTS



04
SUSTAINABLE FARMING SCHEME

05
RURAL PAYMENTS WALES

08
BOVINE EID IN WALES: WHAT'S
CHANGING AND WHEN

09
SHEEP AND GOAT KEEPERS:
ANNUAL INVENTORY

11
WOODLAND CREATION

12
ANIMAL HEALTH AND WELFARE

17
COME AND SEE US AT THE
WINTER FAIR AT THE ROYAL
WELSH SHOWGROUND

18
PREPARE FOR FLOODING
AND SEVERE WEATHER

19
WALES FARM SAFETY PARTNERSHIP

20
FARM LIAISON SERVICE CONTACT
DETAILS

21
FARMING CONNECT

24
WHERE CAN I GET HELP

SUSTAINABLE FARMING SCHEME

The Sustainable Farming Scheme will start on 1 January 2026.

The Introduction to the Sustainable Farming Scheme (gov.wales/introduction-sustainable-farming-scheme) provides a useful summary of the 12 Universal Actions (UAs) you are asked to undertake as part of the new Scheme, and you can find more detail in the [Sustainable Farming Scheme 2026: scheme description (gov.wales/sustainable-farming-scheme-2026-scheme-description)].

There are a number of steps you can take now to prepare for your transition into the new Scheme, including making a head start on some of the individual UAs;

- ✓ Visit our Ready Reckoner (gov.wales/sustainable-farming-scheme-ready-reckoner) to see your indicative SFS payments for 2026.
- ✓ UA1 Soil health – Soil testing undertaken up to four years before you enter the Scheme, will count towards this UA.

- ✓ UA4 Continuous Professional Development – SFS e-learning modules available from Farming Connect and completed in 2025 will count towards this UA for 2026.
- ✓ UA10 Tree and Hedgerow Planting Opportunity Plan – consider where additional tree and hedgerow planting would be beneficial to your farm and consider planting now through existing woodland and hedgerow creation schemes.
- ✓ Start to familiarise yourself with the templates available to make certain UAs easier such as UA2 Integrated Pest Management and UA12 Animal health and welfare.

If you are visiting the Royal Welsh Agricultural Society's Winter Fair 2025, come and talk to Welsh Government and Farming Connect staff located at the Welsh Government Pavilion (opposite the NFU building) to find out more about the Scheme and the support available.



RURAL PAYMENTS WALES



Sustainable Farming Scheme – Frequently Asked Questions

A Frequently Asked Questions document has been developed to accompany the Sustainable Farming Scheme 2026: scheme description. This FAQ is available on the Welsh Government. Full Scheme Guidance and Technical Notes will be available later in the year, before the scheme starts on 1 January 2026.

gov.wales/sustainable-farming-scheme-frequently-asked-questions

Your Sustainable Farming Scheme Map, available on RPW Online

To help you identify the requirements of the Universal scheme applicable to your farm, SFS maps will be available on RPW online by 1 January 2026. This map will detail broad habitat classification, woodland and tree canopy cover, designated sites and historic features.

If you have completed the data confirmation exercise the SFS maps will be updated to reflect any changes you may have already identified.

This mapped information will also be presented within the Single Application Form (SAF) 2026, available in March, where you will have the final opportunity to review and confirm the information as part of the SFS application.

gov.wales/login-rural-payments-wales-rpw-online

Sustainable Farming Scheme Maps

To prepare the Sustainable Farming Scheme maps, Manage My Land will not be available between 8 November 2025 and 12 January 2026, any changes to land, purchases or sales can be completed from 13 January 2026.

BPS 2025 payments

Advance payments worth up to 70% of the anticipated final BPS 2025 claim value have been paid since 14 October. There may be reasons why an advance payment will not have been made, for example, due to an ongoing land dispute, breaches identified at inspection or outstanding probate matters.

Subject to completion of the full validation, BPS 2025 balance payments, or full payments for those who have not received an advance payment, will commence from 12 December 2025.

Basic Payment Scheme (BPS) Transition Period

The BPS Transition Period will start on 1 January 2026, with the introduction of the Sustainable Farming Scheme (SFS).

In 2026, farmers will have the option to claim for BPS or SFS on the Single Application Form (SAF) 2026, which will be available in March 2026. Once a farm business claims SFS, they cannot claim BPS again.

From 2026 onwards, the BPS will be a legacy scheme. There will be no changes to eligibility criteria and scheme rules during this transition period, however BPS payments will taper over the next 3 years, based on the BPS 2025 entitlement values, as follows:

- ✓ 60% in 2026
- ✓ 40% in 2027
- ✓ 20% in 2028.



There will be no BPS available in 2029.

2025 will be the final year for the National Reserve and 2-year entitlement usage rule.

Young Farmer Payments will not be available to new entrants in 2026.

gov.wales/basic-payment-scheme#guidance-and-services

BPS Transfer and Lease of Entitlements for 2026

From 2026 the transfer of BPS entitlements will be restricted to those who transfer and/or lease entitlements with land only. In cases of inheritance and succession this will mean BPS entitlements can only be transferred with land.

The 2026 transfer and lease window, and entitlement transfer rules will be available in early 2026, with supporting guidance.

gov.wales/basic-payment-scheme-transfer-entitlements-guidance
Independent Appeals Process
for Rural Grants and Payments –
Appeal Fee

Independent Appeals Process for Rural Grants and Payments – Appeal Fee

From 1 January 2026 the fee charged to submit a Stage 2 appeal will increase to cover the costs of the Independent Appeal Panel.

The revised appeal fees will apply to all Stage 2 appeals submitted from this date, except for those related to TB compensation.

Revised appeals guidance will be published before the end of the year.

gov.wales/rural-grants-and-payments-appeals-guidance

RPW Online – Migrating from Government Gateway to GOV.UK One Login

The delivery and administration of Sustainable Farming Scheme in 2026 is dependent on GOV.UK One Login.

RPW Online is replacing the Government Gateway service with the new GOV.UK One Login service.

All RPW Online customers have now been invited to migrate from Government Gateway to One Login. Support is available from our Customer Contact Centre, from the Farm Liaison Service and from Farming Connect to assist in the migration process.

We would encourage all our customers to be using GOV.UK One Login before the end of the year, as it is our intention to decommission the Government Gateway service early next year.

Full Guidance on how to migrate is available online and the link to the guidance is contained within the invitation.

gov.wales/rpw-online-migrating-government-gateway-govuk-one-login



BOVINE EID IN WALES: WHAT'S CHANGING AND WHEN

Following the Bovine Electronic Identification (Bovine EID) consultation held earlier this year, the Welsh Government plans to bring in electronic tagging for newborn calves in Wales, using Low Frequency (LF) ear tags.

What's Been Agreed?

Under the new system, all calves born after the start date (to be decided) will need an LF EID ear tag. These tags will continue to display the animal's number and will also contain a microchip with the official animal ID number, that can be read electronically or visually as is the practice now.

Importantly, existing cattle won't need to be retagged, so the existing herd can keep their existing tags and there are no plans to remove paper cattle passports as part of the Bovine EID implementation.

When Will It Happen?

Bovine EID is unlikely to be implemented in Wales until 2027 at the earliest. This gives time for:

- ✓ updates to legislation
- ✓ government systems to be prepared
- ✓ farmers, markets, and abattoirs to get ready.

The Welsh Government is taking a phased approach with introducing Bovine EID for newborn calves, to make sure the transition is smooth and practical for everyone involved.

What's Next?

We're working closely with England to align our implementation plans. Details about when keepers can start using official Bovine EID and what the official tags will look like will be shared once plans have been agreed.



SHEEP AND GOAT KEEPERS: ANNUAL INVENTORY

The Sheep and Goats Annual Inventory is almost here:

1 December 2025

The date of the next Sheep and Goat Annual Inventory is 1 December 2025. Closing date for submission is 31 December 2025.

All keepers of sheep and goats in Wales are legally required to complete the Annual Inventory on 1 December each year.

How to complete the inventory

- ✓ Keepers with a registered EIDCymru account – the inventory will be available on your account at eidcymru.org on the 1 December 2025.
- ✓ You can still register for an EIDCymru account if you would prefer to complete your inventory this way. Please contact EIDCymru on 01970 636959 if you require further support.
- ✓ Keepers who don't have a registered EIDCymru account are invited to complete the inventory on the EIDCymru online portal. Details of how to access the Portal are set out in the recent email or letters sent to keepers without an EIDCymru online account.



If you keep sheep or goats and you have not received an email or a letter asking you to complete an Annual Inventory, please contact EIDCymru on 01970 636959 urgently.

Information required to complete the inventory

Please record the number of sheep and/or goats you own on 1 December on the CPH they are located on. This should include common land and any temporary CPH.

Further support and guidance can be found on gov.wales/sheep-and-goat-keepers-annual-inventory-december-2025.

Farm Liaison Service and Farming Connect will be able to help you to complete your inventory at drop-in sessions at livestock markets during the first half of December.

Date	Venue	Time
1 and 8 December 2025	Welshpool Livestock Market	10.00am – 2.00pm
2 December 2025	Ruthin Livestock Market	10.00am – 2.00pm
2 and 9 December 2025	Brecon Livestock Market	10.00am – 2.00pm
3 and 10 December 2025	Raglan Livestock Market	10.00am – 2.00pm
4 December 2025	St Asaph Livestock Market	10.00am – 2.00pm
5 and 12 December 2025	Carmarthen Livestock Market	10.00am – 2.00pm
5 and 12 December 2025	Dolgellau Livestock Market	10.00am – 2.00pm

EIDCymru and the Farm Liaison Service will be at the Winter Fair to answer any questions you may have.

We encourage you to complete your inventory as early as possible after

1 December, and to take advantage of the support that is available. EIDCymru's opening hours over the festive period are available on their website eidcymru.org.



WOODLAND CREATION

Free Advice on Woodland Creation

Are you thinking of creating woodland on your farm? If so, are you aware there's a free 'pre-application service' available from NRW.

This 'pre-application service' is designed to offer information about the suitability of your land for woodland creation. To access the free advice or for further information email GwirioCynllunCoetir@cyfoethnaturiolcymru.gov.uk.



Woodland Creation Schemes

Following receiving pre-application advice you are able to apply to the Woodland Creation Planning Scheme. The Scheme provides funding of £1,000 to £5,000 to appoint a Registered Woodland Planner to offer advice and develop a woodland creation plan for you. The Scheme is open for Expressions of Interest throughout the year, with selections undertaken monthly. Once a woodland

creation plan has been verified by Natural Resources Wales (NRW), you can apply for a Woodland Creation Grant.

There is also the Small Grants – Woodland Creation scheme for planting of less than 2 Hectares. There are several windows for applications throughout the year, dates are available in the key dates section and on the Welsh Government website: gov.wales/rural-schemes-application-dates. This grant offers support for planting on eligible land which is included in the low sensitivity area shown on the Woodland Opportunities Map (WOM): [datamap.gov.wales/maps/small-grants-woodland-creation/](https://gov.wales/maps/small-grants-woodland-creation/). There is no requirement for a pre-app or verified woodland plan.

For an overview of our Woodland Creation Grants visit gov.wales/woodland-creation-grant-schemes-booklet. Broadleaved tree planting (comprising at least 80% broadleaf species), in individual blocks of 0.1 hectares or greater, that is in the ground and under management by 15 May 2026 will contribute towards meeting the Sustainable Farming Scheme (SFS) 10% habitat requirement for 2026. Tree planting completed from 1 April 2022 onwards will be recognised as progress towards implementing the SFS Tree and Hedgerow Planting Opportunity Plan under Universal Action 10.

ANIMAL HEALTH AND WELFARE



Sustainable Farming Scheme: The Animal Health and Welfare Universal Action – What you need to know

The Animal Health and Welfare Universal Action is an excellent opportunity to work with your vet to optimise animal health on your farm and further support the excellent health and welfare initiatives being carried out on Welsh livestock farms. The Universal Action is comprised of three elements, designed to complement each other:

- ✓ **Animal Health Improvement Cycle (AHIC)** – Work with your primary vet to carry out the four steps of the AHIC in a 12-month
- ✓ period for the most appropriate livestock class you keep. You decide what you want to work on in collaboration with your vet. The AHIC process has a standard template which must be used.
- ✓ **Biosecurity assessment for incoming animals** – Complete a biosecurity assessment with your vet for incoming animals, using the standard template.
- ✓ **Animal welfare** – Complete training in Body Condition Scoring (BCS) and in Mobility Scoring for the livestock classes you keep, using the specific SFS modules on the Farming Connect platform or other approved training.

The training should be undertaken at least once every five years. Then annually, you will need to complete and record the date of herd or flock scoring for body conditioning and mobility noting any actions required.

Templates have been developed with industry to guide farmers and vets through a new and innovative way of working, while vets in Wales will have accredited training to maximise the value of the AHIC.

The work you undertake for this action is entirely separate from any health plans you undertake as part of farm assurance schemes you may participate in. Farm assurance health plans and in particular the AHIC process are separate but also,

potentially synergistic. Each have different objectives and approaches, although some aspects may be deliverable at the same time. Feedback from farmers participating in the recent AHIC pilot has been extremely positive.

Come and hear more from farmers and vets involved in the pilot at our AHIC events this winter. Details will soon be available on Farming Connects 'What's On' webpage.

For more information on this action, please visit: gov.wales/sustainable-farming-scheme-2026-scheme-description-html#ua12-animal-health-welfare or the FAQs section: gov.wales/sustainable-farming-scheme-frequently-asked-questions



TB Eradication Programme Board

The TB Eradication Programme Board will reach it's one year milestone in December. In it's first year of working it has advised WG on changes to the On Farm Slaughter Policy and to the management of Resolved Standard IR cattle. Both recommendations were as a result of advice from the Technical Advisory Group and based on scientific evidence and consultation with stakeholders. The start date and further details for the new Resolved Standard IR Policy can be found at gov.wales/welsh-cattle-movement-restrictions-enhance-tb-control.

The TAG report on TB, Cattle and Wildlife is scheduled for the December meeting of the Board and will inform advice to Welsh Government. Work is already underway to review the current testing and movement regime and developments and innovation in testing. The TAG conclusions, following their review, will be reported to the Board during 2026.

The Board and TAG recognise the complexity of the disease and the long term challenges of eradication. They are currently finalizing a Position Statement which will outline their strategy to eradicate the threat of the disease and its impact on cattle, people and wildlife.

The Board will hold an open forum on the Monday of the Winter Fair in Llanelwedd, to share information on progress to date and plans for the

future. The meeting will be held in the Wales YFC Centre at 11am. Details for the event, including how to reserve a place, are currently being finalized and we welcome the opportunity to meet with stakeholders and others with an interest in the eradication of bTB.



Bovine TB – Whole life restrictions on resolved standard interpretation Inconclusive Reactors

The policy to restrict resolved standard interpretation Inconclusive Reactors (IRs) to the holding for the rest of their life is being introduced in Wales.

All Standard interpretation IRs in Wales that have a negative result under standard interpretation at the re-test read on or after 1st January 2026, will remain restricted for the rest of their life to the holding in which they were found.

The restrictions will apply on IRs disclosed at standard interpretation, at any test in Wales, which then test clear under standard interpretation on or after 1st January 2026 (day 2 – TT2). The only permitted off movements for such animals are to a slaughterhouse or an Approved Finishing Unit (AFU). The cattle can move directly or via an approved slaughter gathering or TB dedicated sale (orange market).

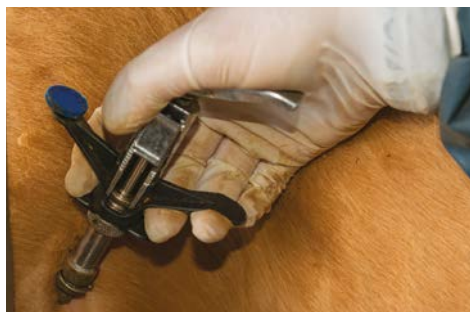
Definition of a Resolved Standard IR

The main screening test for TB in cattle in Great Britain is the single intradermal comparative cervical tuberculin test (SICCT). This is commonly known as the TB skin test. A standard interpretation inconclusive reactor is an animal which shows a reaction to bovine tuberculin greater than the avian, but not strong enough to be classified as a reactor. IRs must be isolated and re-tested after 60 days. Animals that have an inconclusive result at two consecutive TB skin tests are classified as reactors.

A resolved standard IR is an animal identified as a standard interpretation inconclusive reactor at a TB skin test, which then tests clear under standard interpretation upon retesting.

Further guidance is available at: www.gov.wales/bovine-tb-whole-life-restrictions-resolved-standard-interpretation-inconclusive-reactors

The tuberculin skin test or SICCT (single intradermal comparative cervical tuberculin test), is the primary test for TB in the UK.



Bovine Viral Diarrhoea: What You Need to Know This Winter

The Bovine Viral Diarrhoea (Wales) Order, which has been in place since 1 July 2024 requires every cattle keeper to screen their herd annually for BVD. The results of this screen will determine the status of the herd.

How do I screen for BVD?

- ✓ Many keepers find it easiest to test during their annual TB visit.
- ✓ Five unvaccinated calves between 9–18 months of age are blood sampled per management group.
- ✓ If this is not possible, speak to your vet for further guidance.

The next stage of legislation comes into force on 1 July 2026. It means cattle from herds, which have not

If you have not screened your herd since 1 July 2024; act now by contacting your vet to arrange a BVD screen.

Led by the Welsh Government funded Arwain DGC programme, Wales has been internationally recognised for reducing antibiotic usage in livestock. The Deputy First Minister and Cabinet Secretary for Climate Change and Rural Affairs, Huw Irranca-Davies visited a South Wales farm which has reduced its antibiotic usage for calf pneumonia by 92% by increasing shed ventilation and utilising new technologies.



For further information about the work being undertaken to reduce antimicrobial resistance in Wales please see: <https://rhaglenni.mentera.cymru/arwaindgc/en/home/>.

If you keep animals outdoors in an area where there is a flood risk, you should also make a plan to protect them.

gov.wales/caring-farm-animals-and-horses-extreme-weather

COME AND SEE US AT THE WINTER FAIR AT THE ROYAL WELSH SHOWGROUND



Come and see us at the Royal Welsh Agricultural Society's Winter Fair 2025 at the Royal Welsh Showground.

Welsh Government staff, including members of the Farm Liaison Service will be at the Welsh Government Pavilion (opposite NFU building) and the South Glamorgan Exhibitions Hall during the Winter Fair which will take place from Monday 24 November until Tuesday 25 November.

Sustainable Farming Scheme drop-in – Welsh Government Pavilion

Visitors will be able to drop-in and speak to colleagues from Rural Payments Wales, Forestry, Farm Liaison Service, Animal Health and Welfare, Farming Connect and Natural

Resources Wales to discuss all things relating to the Sustainable Farming Scheme.

RPW will also be providing demonstrations of elements of the SFS SAF, including the field data page and the SFS Universal dashboard to visitors.

Welsh Government Stand – South Glamorgan Exhibition Hall

Staff will be on hand to offer the latest information on a range of general rural affairs topics, including the Sustainable Farming Scheme, agricultural support schemes, Woodland creation schemes, Agricultural Pollution Regulations and EID Cymru.

Come along and say hello.

PREPARE FOR FLOODING AND SEVERE WEATHER

Flooding and extreme weather are becoming more common in Wales, especially in winter.

Here's how to stay safe and prepared:

Stay Informed

- ✓ Sign up for free flood alerts from Natural Resources Wales (NRW).
- ✓ Check **Met Office weather warnings** ([weather.metoffice.gov.uk/warnings-and-advice](https://www.metoffice.gov.uk/warnings-and-advice)) and local council updates.

Know Your Risk

- ✓ Use NRW's **Flood Risk Map** (naturalresources.wales/flooding) to see if your property is at risk.
- ✓ Check if you qualify for support via the **Flood Re Tool** (floodre.co.uk/find-an-insurer/#flood_re_tool)
- ✓ Consider "Build Back Better" (floodre.co.uk/buildbackbetter) measures like:
 - door flood barriers
 - airbrick covers

- non-return valves
- waterproof sealants.

Be Winter Ready

- ✓ Clear gutters, drains, and downpipes regularly.
- ✓ Report blocked street drains to your council.
- ✓ Ensure good garden and driveway drainage (e.g. permeable surfaces).

Animal Welfare During Flooding and Severe Weather

- ✓ Outdoor animals need a contingency plan for extreme weather.
- ✓ Farmers in flood-risk areas should plan how and where to move animals safely.
- ✓ After flooding, monitor animals closely, especially young ones, for signs of illness from contaminated feed or water.





YOUR FARM DEPENDS ON YOU: STAY SAFE

An ATV accident can change your life forever

ATVs can be incredibly dangerous. Accidents involving these vehicles can have severe consequences, often leading to life-altering injuries or even fatalities.

To minimise the risk of ATV accidents, it's essential to:

- › Wear appropriate safety gear: Helmets, protective clothing, and boots can help reduce the severity of injuries.
- › Receive proper training: Understanding how to operate an ATV safely is crucial.
- › Follow manufacturer's guidelines: Adhere to the ATV's weight and age restrictions.
- › Ride responsibly: Avoid dangerous terrain, excessive speed, and riding under the influence of alcohol or drugs.

PARTNERIAETH
DIOGELWCH AR
FFERMYDD CYMRU



WALES
FARM SAFETY
PARTNERSHIP

Working together to
make farming safer



Ariennir gan
Lywodraeth Cymru
Funded by
Welsh Government

Farm Liaison Service

A fully funded support service



Llywodraeth Cymru
Welsh Government

We provide customers with guidance in respect of all farming and rural schemes and policy areas administered by Welsh Government.



We are here to help so please get in touch:

ALL WALES

Rita Jones

Cymraeg

07971 048619

rita.jones@gov.wales

SOUTH EAST WALES

Jane Walters

07721 894875

jane.walters@gov.wales

Caitlin Harley

Cymraeg

07890 663351

caitlin.harley@gov.wales

SOUTH WEST WALES

Catrin Jones

Cymraeg

07968 159637

catrin.jones3@gov.wales

Caitlin Harley

Cymraeg

07890 663351

caitlin.harley@gov.wales

NORTH EAST WALES

Armando Morgan

Cymraeg

07774 950639

armando.morgan@gov.wales

NORTH WEST WALES

Janet Phillips

Cymraeg

07774 950654

janet.phillips@gov.wales

MID WALES

Steve Meredith

07721 894873

stephen.meredith@gov.wales

Eve Bridgewater

07721 894869

eve.bridgewater@gov.wales

Jane Walters

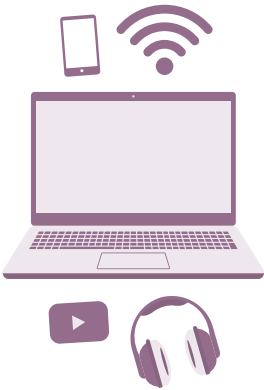
07721 894875

jane.walters@gov.wales

FLS
Tim Cysylltwyr Fferm
Farm Liaison Service

CONTINUOUS PROFESSIONAL DEVELOPMENT

HOW FARMING CONNECT CAN SUPPORT THE COMPLETION OF UA4 OF THE SUSTAINABLE FARMING SCHEME



There are **6 Farming Connect accredited e-learning suites, consisting of up to 9 modules per suite**, specifically designed to complement each other and enhance your learning experience and knowledge of sustainable land management.

Each module takes approximately **1 hour** to complete and there are a total of **44 modules** to choose from.



Upon completion of a suite, you will gain a higher level of recognition through a Lantra Awards certificate, which will be automatically saved in your **Storfa Sgiliau** account to evidence the CPD you have achieved.

For farm businesses joining the SFS in 2026, completing these e-learning modules from summer 2025 **will be counted** towards the 2026 Scheme Year *(but only for that scheme year)*.



The e-learning modules and Storfa Sgiliau are **fully funded** and can be found on the Farming Connect website.



Ariennir gan
Lywodraeth Cymru
Funded by
Welsh Government



FARMING
connect
cyswllt
FFERMIO

SGILIAU A
HYFFORDDIANT
SKILLS AND
TRAINING

Free information and technology support

Would you like support to:

- ✓ create and manage e-mails
- ✓ use any devices e.g laptops, ipad / android version, phones etc
- ✓ gain access to Welsh Government systems (RPW / One Login)
- ✓ join a webinar
- ✓ listen to live mart / auction
- ✓ create and use spreadsheets
- ✓ set up Facebook, Instagram etc
- ✓ assistance with Storfa Sgiliau
- ✓ Farmdata+

Support available between 1-3 hours

If so, please contact us on
03456 000 813



Ariennir gan
Lywodraeth Cymru
Funded by
Welsh Government

Rydym yn croesawu galwadau'n Gymraeg
We welcome calls in Welsh



FARMING
connect
cyswllt
FFERMIO



Ariennir gan
Lywodraeth Cymru
Funded by
Welsh Government



FARMING
connect
cyswllt
FFERMIO



Unlock your farm's potential with the power of benchmarking **FARMDATA+**



WHAT IS BENCHMARKING?

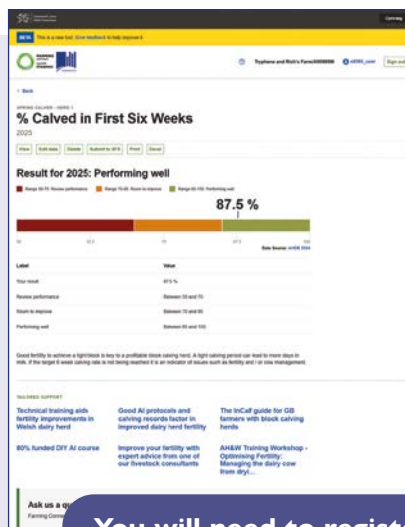
Benchmarking is a powerful management tool that allows you to measure your farm's performance and compare results against previous performance, similar farms and industry averages.

Benefits of Benchmarking

- Identify strengths & weaknesses
- Boost profitability
- Make data-driven decisions
- Improve efficiency
- Stay competitive
- Set realistic goals

FARMDATA+ offers

- ✓ Key performance indicator (KPI) approach
- ✓ Physical, financial and environmental indicators
- ✓ Sector specific and whole farm KPIs
- ✓ Instant analysis with tailored support
- ✓ Simple to navigate
- ✓ KPI title only will be shared automatically with RPW (no performance data)



**You will need to register
via GOV.UK One Login
and Farming Connect**

Contact your Local Development Officer for more information.

We welcome calls in Welsh



03456 000 813



gov.wales/farmingconnect



Scan the QR code to find
out how benchmarking has
benefited Welsh farmers.

WHERE CAN I GET HELP?

GET IN TOUCH WITH US

FARMWELL WALES

www.farmwell.wales
help@fcn.org.uk

FARMING CONNECT

03456 000 813

THE DPJ FOUNDATION

07860 048799 (text only)

THE ADDINGTON FUND

01926 620135

TIR DEWI

0800 1214722
mail@tirdewi.co.uk

FARM LIAISON SERVICE

0300 0255449
farmliaisonservice@gov.wales

ROYAL AGRICULTURAL BENEVOLENT INSTITUTION

0800 188 4444
help@rabi.org.uk

THE FARMING COMMUNITY NETWORK

03000 111 999
help@fcn.org.uk

RPW CUSTOMER CONTACT CENTRE

0300 062 5004

MIND CYMRU

0300 123 3393
info@mind.org.uk

SAMARITANS

116 123
jo@samaritans.org