

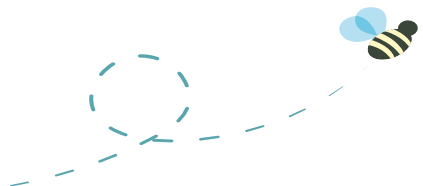


Llywodraeth Cymru  
Welsh Government

# A Parent and Carer's Guide to the Assessment Arrangements for 0- to 3-year-olds in Wales



# Contents



<b>Introduction</b>	<b>3</b>	<b>How you can help and be involved</b>	<b>6</b>
<b>What is Early Childhood Play, Learning and Care (ECPLC)?</b>	<b>4</b>	<b>What nursery staff/childminders will do</b>	<b>6</b>
<b>What does assessment mean?</b>	<b>4</b>	<b>Babies/young children's rights and your rights</b>	<b>7</b>
<b>What is the ECPLC: Assessment Arrangements for 0- to 3-year-olds in Wales resource?</b>	<b>5</b>	<b>Frequently Asked Questions</b>	<b>8</b>
<b>How will my baby/young child's needs and development be assessed?</b>	<b>5</b>	<b>Find out more</b>	<b>9</b>



# Introduction

Every baby/young child in Wales deserves the best possible start in life. That's why we have the [Early Childhood Play, Learning and Care \(ECPLC\) Plan](#).

The [Early Childhood Play, Learning and Care \(ECPLC\): Assessment Arrangements for 0- to 3-year-olds in Wales](#) are part of this plan. They are not tests – instead, they are a way for nursery staff/childminders to notice, analyse, and respond to how babies/young children are learning, playing, growing, and developing.

This guide explains what assessments look like, what you can expect, and how you can be involved.







## What is Early Childhood Play, Learning and Care (ECPLC)?

**Early Childhood Play, Learning and Care (ECPLC)** is the Welsh Government's vision to support babies/young children's growth through play, learning, and quality care in the early years.

## What does assessment mean?

At this age, for nursery staff/childminders, assessment is about **really getting to know your baby/young child** — what they enjoy, what they can do, and what they are learning next. When we talk about assessment for babies/young children, we don't mean tests or scores.

Nursery staff/childminders and families work together to notice how your baby/young child grows and learns through **play, daily routines, and interactions**, so they can give the right support at the right time. It's part of everyday life: watching, listening, playing and talking with your baby/young child. It's about noticing, understanding and responding – helping every baby/young child to thrive.

# What is the ECPLC: Assessment Arrangements for 0- to 3-year-olds in Wales resource?

This resource explains how nursery/childminding staff work with babies/young children to help them get the right support as they grow and learn. It brings together one simple approach for everyone working with babies/young children under 3.

Nursery staff/childminders **notice** how babies/young children are developing in all areas — play, learning, talking and listening, movement, feelings, behaviour and getting along with others.

They do this by watching and listening during everyday activities like play, routines, talking and exploring. They then **think about** what they've seen (**analyse**), **plan what to do next** to help the baby/young child (**respond**), and **look back** at how well things have gone (**reflect**).



# How will my baby/young child's needs and development be assessed?

Assessment helps every baby/young child make progress at their own pace. It's not a test — it's about noticing what your baby/young child can do and how they are learning through play and everyday life.

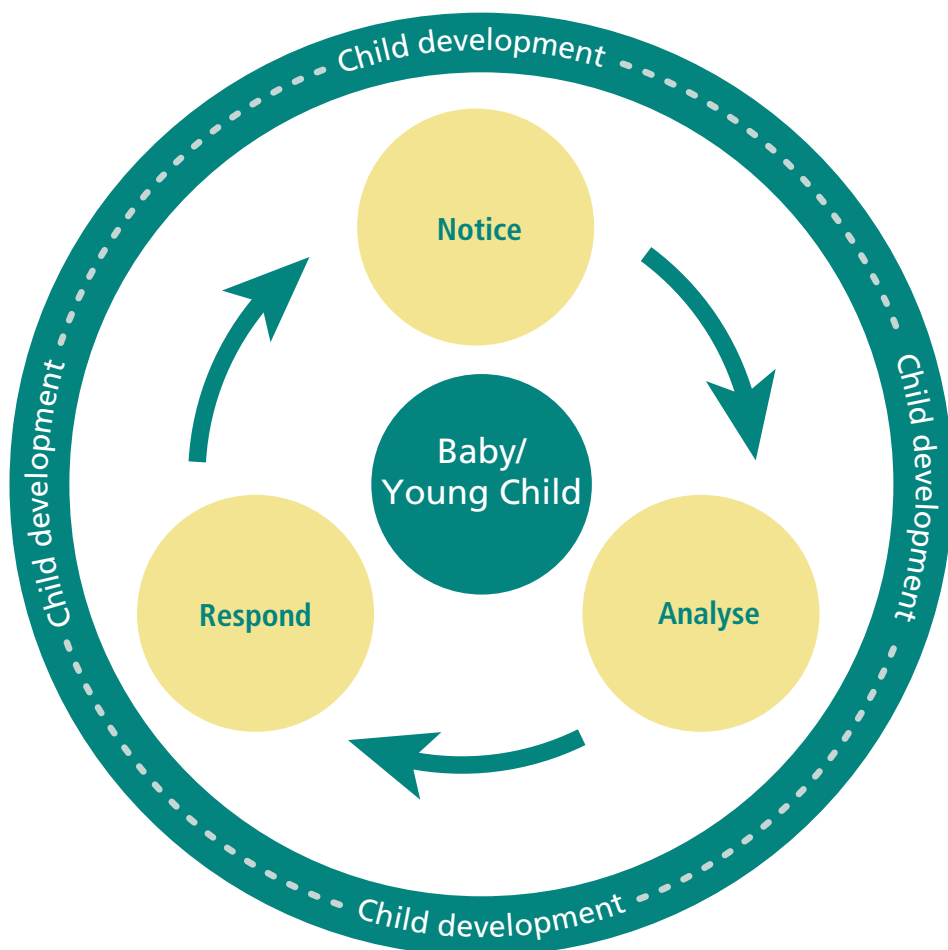
Nursery staff/childminders notice what your baby/young child can do during daily routines and play. For example:

- **Stacking blocks or joining in a song** – showing physical or communication skills
- **Exploring new toys or activities** – showing thinking and problem-solving
- **Playing alongside or with others** – showing social and emotional development

These small, everyday moments help nursery staff/childminders understand your baby/young child's strengths, interests, and what support they might need next. Good assessment also helps spot early if a baby/young child needs extra help or extra challenge, so they can reach their full potential.

Nursery staff/childminders may make short notes, take photos, or keep examples of development and learning to help track progress. There isn't a fixed schedule — assessment happens naturally throughout the day and is shared regularly with you through conversations, updates, or planned discussions.

If extra support is needed, nursery staff/childminders will talk with you and work together to make sure your baby/young child gets the right help as they grow and learn.



## How you can help & be involved

You know your baby/young child best. You can help by:

- Sharing what you observe at home about your baby/young child's play, likes, strengths, and what worries you.
- Joining in, playing together, talking, singing, reading, exploring – small everyday things make a big difference.
- Asking your baby/young child's nursery staff/childminders how you can support your baby/young child's next steps.
- Requesting updates on progress, asking questions, and bringing up any concerns.

## What nursery staff/childminders will do

- Use their skills to observe your baby/young child in natural settings (play, routines, etc.).
- Plan learning and play activities that build on what your baby/young child can already do.
- Talk with you regularly about your baby/young child's progress.
- Help identify if extra support or more challenge is needed, and work with you to help.
- Respect your baby/young child's rights and your role as a parent or carer.

# Babies/young children's rights and your rights

- Every baby/young child in Wales has a right: to play, to learn and to be listened to.
- Assessments are about helping babies/young children, not judging them.
- All information from assessments is private and shared only with those who need it to support your baby/young child.





# Frequently Asked Questions (FAQ)

Question	Answer
<b>Is this something new?</b>	No, it builds on what nursery staff/childminders already do — this resource simply makes it clearer and more consistent.
<b>Is this like a test?</b>	No. It's based on seeing and listening to your baby/young child in their daily life, not formal testing.
<b>Will I get something written down?</b>	Nursery staff/childminders might make short notes or use digital tools to keep track, but the main focus is on talking with you and sharing how your baby/young child is doing — not on paperwork.
<b>Will I know how my baby/young child is doing?</b>	Yes. Nursery staff/childminders will share what they see and what they're planning next with you.
<b>How often will my baby/young child be assessed?</b>	Assessment is ongoing. Nursery staff/childminders will be observing your baby/young child throughout the day.
<b>What if extra help is needed?</b>	Nursery staff/childminders will talk with you about options. Early support helps.
<b>What if I am worried or have concerns?</b>	You can ask for more information, discuss with the setting, or contact the settings lead staff.





## Find out more

- Early Childhood Play, Learning and Care resources (including the Assessment Arrangements and Children's Rights leaflet for parents) can be found: [Early Childhood Play, Learning and Care \(ECPLC\) Resources](#)
- Talk with your baby/young child's nursery/childminder, or playgroup
- Contact your local authority early years/family information services
- Visit [Teulu Cymru: Support for families in Wales](#)

