

Easy Read



Llywodraeth Cymru
Welsh Government

Our work on Learning Disability Services

A report on what we have done in
2022 to 2026



April 2026

How to use this document



This is an Easy Read version of: **Learning Disability Strategic Action Plan 2022-2026: Closure Report**



You might need help to read it. You can ask someone you know to help you.



Llywodraeth Cymru
Welsh Government

Where the document says **we**, this means **Welsh Government**. For more information contact:

Email: Andrew.stevenson@gov.wales

Phone: 0300 025 5936



Hawdd ei Ddeall Cymru
Easy Read Wales

[Easy Read Wales](#) made this document into Easy Read using **Photosymbols**. [To tell us what you think about this easy read version, click here.](#)

Contents

About this report	4
What we have done	8
1. Working together	10
2. Getting over COVID	14
3. Health and social care	16
4. Independent living.....	27
5. Education	29
6. Jobs and skills	31
7. Housing.....	33
8. Transport	34

About this report



Llywodraeth Cymru
Welsh Government

We are the Welsh Government.



This report is about the work we have done to improve Learning Disability Services.



It says what work we have done to achieve our goals in this plan: Learning Disability Services - [Our plans for 2022 to 2026](#)

We have split this work into 8 important areas:



1. Working together



2. Recovering from COVID



3. Health and social care



4. Independent living



5. Education



6. Jobs and skills



7. Housing



8. Transport

Good news:



- Things are getting better.



- Information is being shared to help more people.



- Fewer people are staying in hospital when they do not need to.



The future:

- Not all of the work is finished yet.



- A new plan will start in 2026 to keep making things better for the next three years.

What we have done



Most of the tasks are either finished or almost finished.



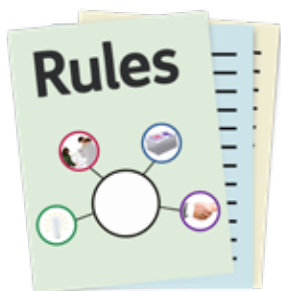
Some of the tasks are part of a longer plan. This means that the work will keep going for a long time.



More work is needed to make sure everyone is treated fairly and feel included.



We are making new guidance for professionals. So they can help people get the services they need.



New rules for direct payments will start on 1 April 2026.



More time needs to be spent helping people get **advocacy** services. This has not improved as much as hoped. This will be a big focus in the future.



Advocacy is when someone helps you and speaks up for you



Work to help people with friendships and relationships did not start when it was supposed to.



We are working with the **Learning Disability Ministerial Advisory Group** to decide if we will work on this in the future.



The **Learning Disability Ministerial Advisory Group** is called **LDMAG** for short.

1. Working together



We made an action plan in 2022.



It has been checked every year. it is going well.



Welsh Government, LDMAG and the NHS are now making a new plan for 2026 to 2029.



LDMAG meets every 3 months. Their work is important and it is going well.



They worked hard to include everyone in meetings. They checked how to improve their work and share it with more people.



Some people are not well represented in learning disability work. For example, Black and Asian people.



A group was set up to look at how policies affect different groups.



The new learning disability plans will make sure that everyone is included fairly.



A study in 2024 said a **Learning Disability Observatory** could not be set up. This was because of money, staff and other pressures.



A **Learning Disability Observatory** is a place to collect and keep information about people with a learning disability.



Instead of the Observatory, the NHS is improving how information is collected and used.



They have hired an expert on data. They have started using the data collected in a better way.



Every 4 months, we check that everything is going well.



The [reducing restrictive practice framework](#) is going well.



This is a plan to lower the use of things in care that take away people's choice and freedom.



We have changed how things are reported. So we know when things are not right and how to make them better.



We have worked with health boards to make sure they are following the [reducing restrictive practice framework](#).



Co-production is now a normal part of the work we do with everyone.



Co-production is when people and professionals work together to plan and make decisions.



More work will be done on this to make sure **co-production** is a priority.

2. Getting over COVID



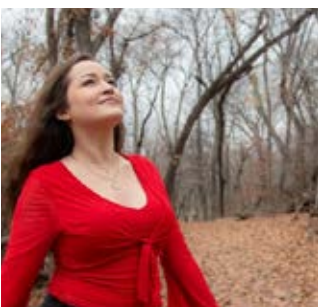
We wrote plans for **social prescribing** to help professionals do it well.



Social prescribing is a way of helping you get the support you need. And find lots of ways to improve your health and wellbeing.



We will keep checking that **social prescribing** is working.



Improving wellbeing is part of all our work.



We are supporting Learning Disability Services to take care of people's mental health.



Learning from COVID is helping to make new policies.



Once the **Covid Inquiry** is finished, we will look at what we need to improve.



The **Covid Inquiry** is research into the impact COVID had on people and the nation.

3. Health and social care



We are still working on the recommendations from [Improving Lives](#).



This is a piece of work that focuses on improving health and social care for people with learning disabilities.



In 2022 we set up a group to improve learning disability services. They have done a lot of good work.



The NHS checks that services are doing well. They collect information about how many people are using services.



In 2024, a group looked at NHS hospital buildings and agreed that things need to be improved.



Local health boards and local councils are working together to make sure people do not spend too long in hospital. And to try and stop people needing to go to hospital.



We have improved the checks that are done when someone with a learning disability dies.



We are sharing useful information about this. To help all services learn and improve.



We started using the **Paul Ridd Learning Disability Awareness** training in 2022.



Most NHS staff have done the training.



More up to date training is being written and will be given to staff in the future.



We wrote a new **Integrated Learning Disability Quality Statement.**



This says what good health and social care looks like for people with learning disabilities.



Disabled people helped to write the statement.



We gave health boards money to improve Annual Health Checks.



We gave staff information, resources and training to help them do Annual Health Checks.



We have provided more funding so people can get annual health checks at their local GP surgeries.



We set up a working group to improve people's experience of Annual Health Checks.



We started a new website called [Get Checked out Wales](#).



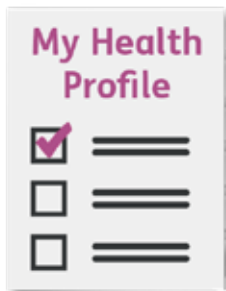
We will keep working to get more people to have an Annual Health Check.



We supported health boards to follow the Health Equalities Framework. This is a guide for making sure everyone can have good health.



We are working to make it easier for all health and social care staff to follow it.



We made the [Once for Wales Health Profile](#).



This is a way for people with a learning disability to share important information with healthcare staff.



We are working to make sure everyone knows about it and uses it.



We made [Easy Read information](#) to help people with learning disabilities get vaccines - medicine that helps your body fight diseases. It helps keep you safe from getting very ill.



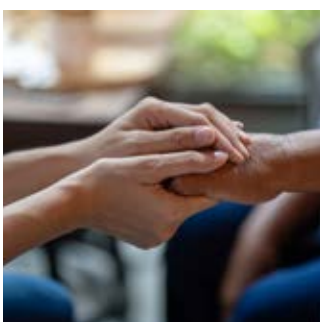
We supported Public Health Wales to encourage people with learning disabilities to go for bowel screening.



We have worked to improve computer systems. So health staff know when someone has a learning disability.



We have checked the **Learning disability Acute care bundle**. This is a way for hospitals to work better with people with a learning disability.



We have done work to make sure learning disability patients with Dementia are properly looked after.



There is a group who focus on people who live alone and are lonely.



This group now includes people with learning disabilities.



Welsh Government funding has been used to set up local social groups.



And to look at how changes to day services are impacting people.



We will keep working on this.



We have a new plan for unpaid carers.



As part of the new plan, we will keep providing money for short breaks up to 2029.



We are working with services to make sure there are more day opportunities. And services for people with a learning disability.



Our work on letting people use direct payments for health care is going well.



We have a new law to help make this happen.



There will be more guidance and rules for this in April 2026.



We are working with teams to make sure the new system works.



We made new guidance for supporting parents with a learning disability in April 2023.



We checked the **Social Services and Wellbeing Wales Act 2014**.



We will include what we learned in the **National Care and Support Service**. This will be a service like the NHS, but for social care.



We are supporting social care workers by making their pay more and improving working conditions.



We give £7 million a year to social care staff training. Local councils also give £3 million.



We have done research to work out where Learning Disability Nurses are needed most.



An expert on learning disabilities and mental health has been employed by the government.



The NHS is providing support to learning disability nurses in hospitals.



They are helping to record the good impact the nurses have on patients.



We have written a new plan called **National Strategy for Unpaid Carers**.



People are being asked to give their thoughts about the plan. It will be ready in April 2026.

4. Independent living



A report was made in 2024 about advocacy services.



We are using this report to decide what to do next.



There is a lot of work to do. It will be part of the next 3 year plan.



We have been supporting people to use technology and stay safe on the internet.



Researchers are looking at how not understanding how to use technology safely links to people having worse health.



The report from this research will be out in 2026.



Work on friendships and relationships has not started yet.

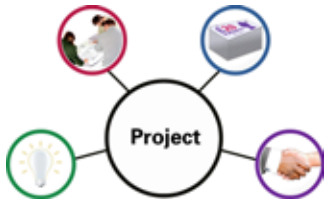


This work is important. It is covered in other work like our work on day services and loneliness.



LD MAG need to decide if this should be focused on again in the future.

5. Education



There have been 6 projects to see how we can better support people with **complex needs**.



People with **complex needs** need a lot of support with daily life. They have help from health and social care services.



Wrexham University is doing research on professionals and families to see how services can be improved.



The Additional Learning Needs system is working in Wales. The system supports over 32 thousand learners.



Helping families who have children with ALN is very important. We have created new resources such as the ALN parents toolkit to help them.



It is also important to keep communicating well with families. This is a priority in the future.

6. Jobs and skills



We are working hard to support disabled people into paid jobs.



We have Disabled People's Employment Champions. They support employers.



People can now get a job coach to help them get paid work.



We want to make it easier for people with a learning disability to get a job.



We do not have enough information about **apprenticeships** and learning disabilities yet.



An **apprenticeship** means working and learning at the same time. A person doing an apprenticeship is called an **apprentice**.



We set targets in 2021 to employ more disabled apprentices. Every year since 2021, we have achieved these goals.



We do not have enough apprenticeships for disabled people yet.

7. Housing



Local councils and health boards must treat people with learning disabilities as a priority.



We want everyone to get the same good standard of care across Wales.



The Regional Integration Fund helps make sure everyone can get good health care.



The fund supports 750 thousand people and 3 thousand staff every year. Learning disability support is a main focus.

8. Transport



One of the aims of The National Transport Delivery Plan 2023 was to improve public transport for disabled people.



We provide free or cheaper tickets for older and disabled people using public transport.



We are spending money on new trains that will be easier for disabled people to use.



Transport for Wales has a plan to improve transport for disabled people.