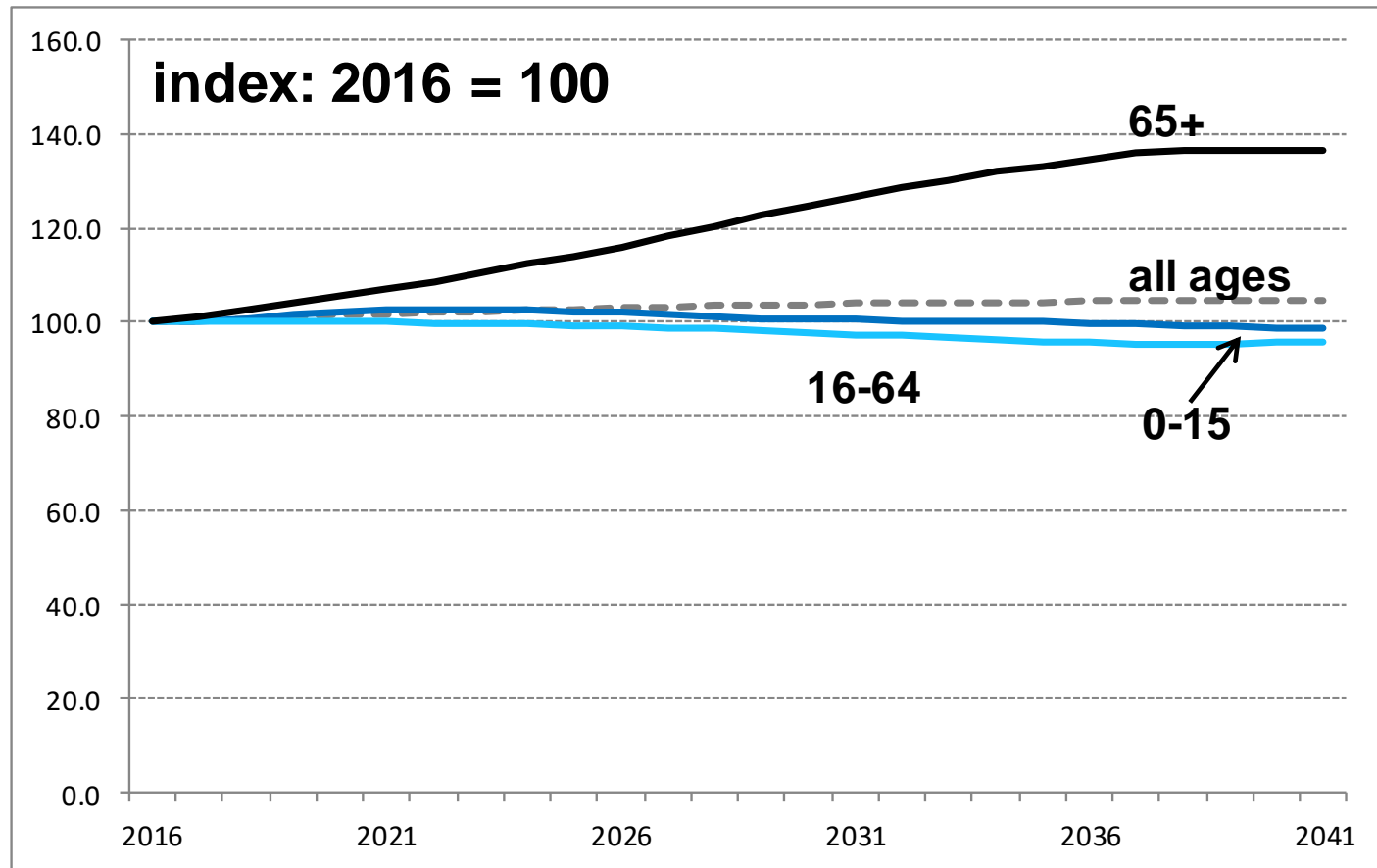


Welsh Government Future Trends Report 2017– Health Theme data slides

The following slides provide background data and graphs used for the Health theme in the Future Trends Report 2017

A growing and ageing population poses challenges for health and social care services

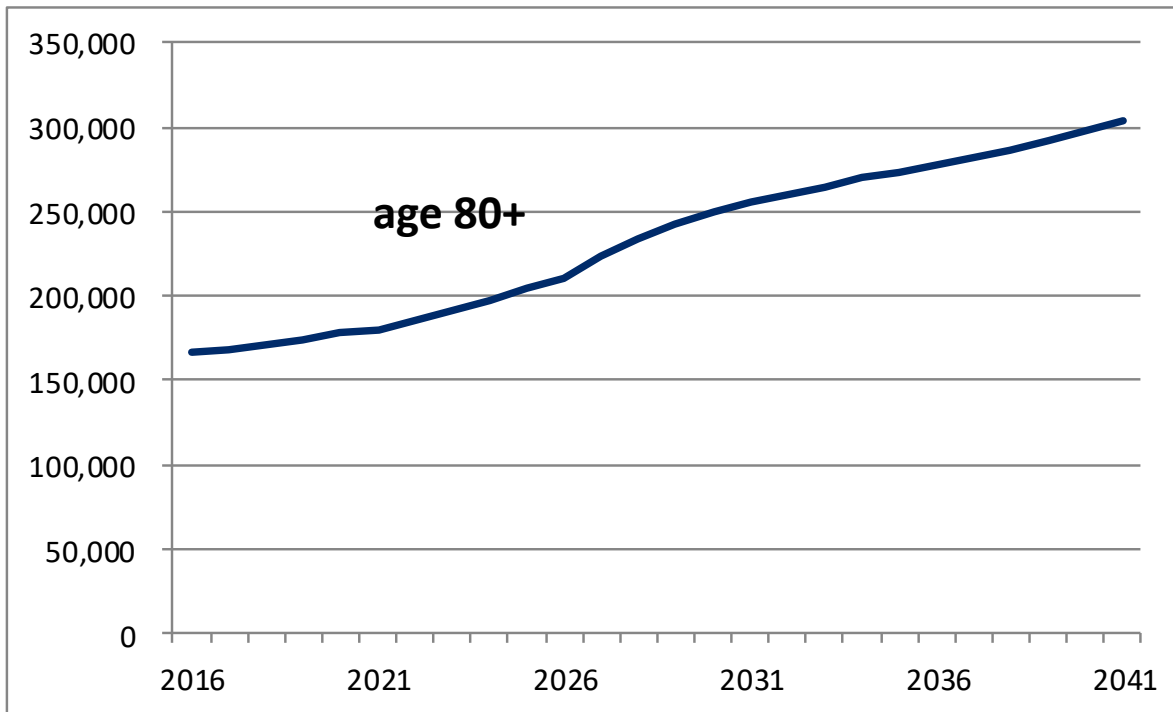
Wales: population projections



Source: StatsWales

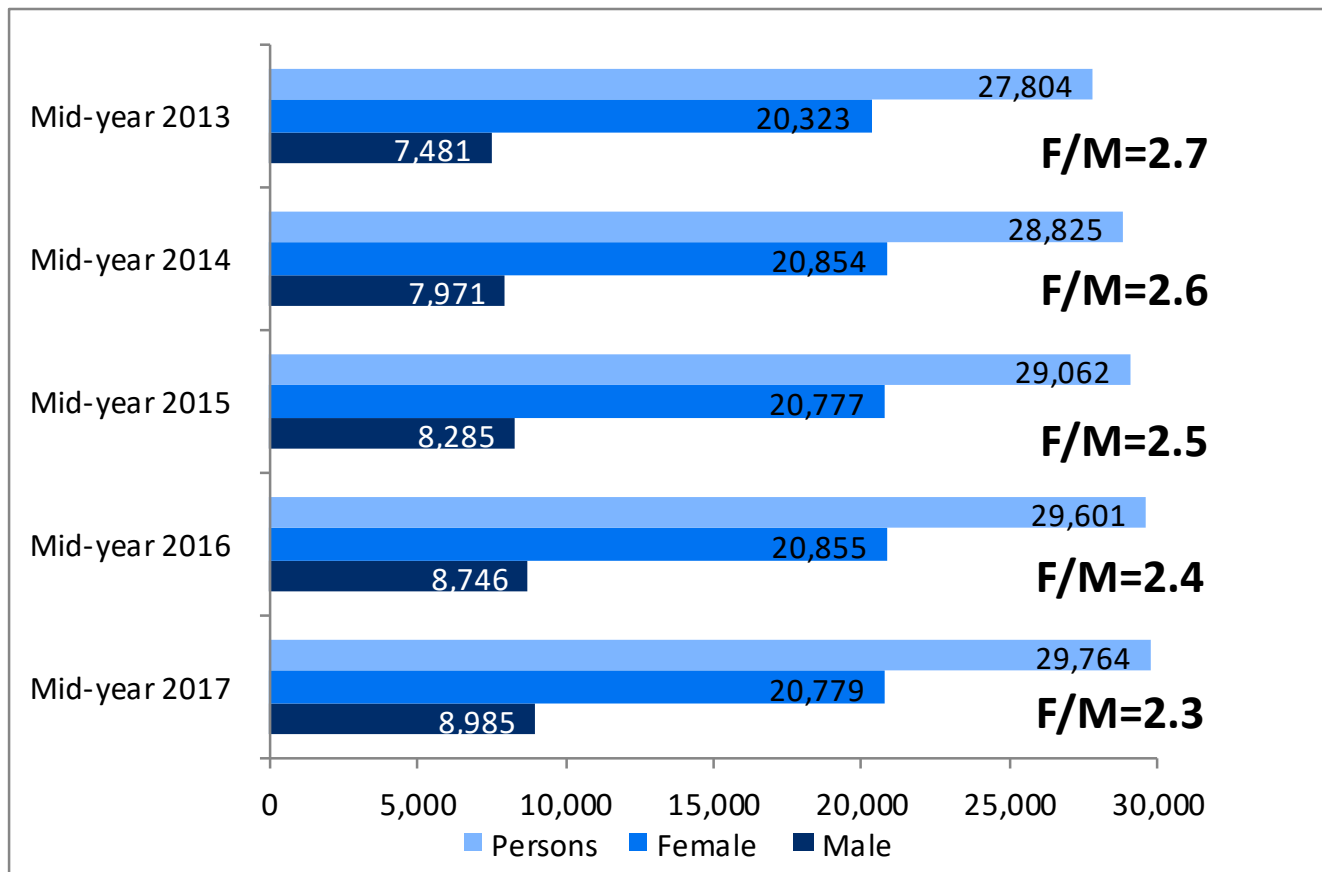
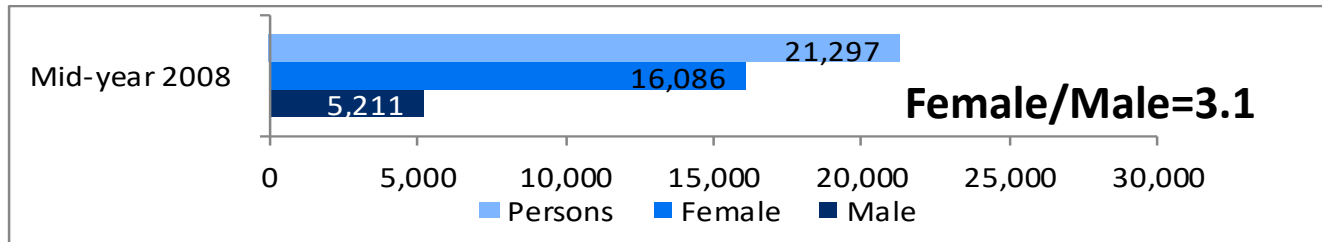
The populations of the old people are expected to see large relative increases, with the number of people in Wales aged 80 and over projected to increase by over a quarter over the next 10 years, and by over 80% over the next 25 years.

Wales: population projections for people aged 80 and over



Source: StatsWales

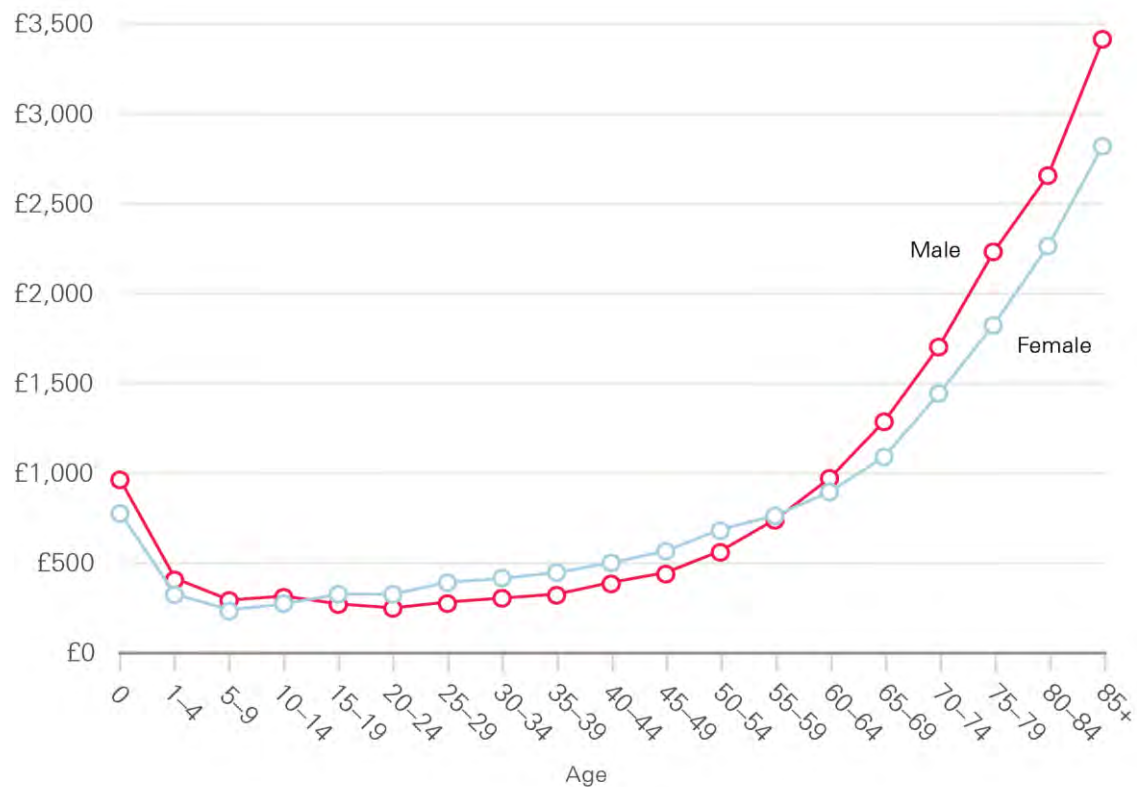
People aged 90 and over in Wales



Significant increases in the numbers of very old – and cost of care increases significantly with age

Cost of acute care in Wales

Average annual cost by age and sex 2014/15

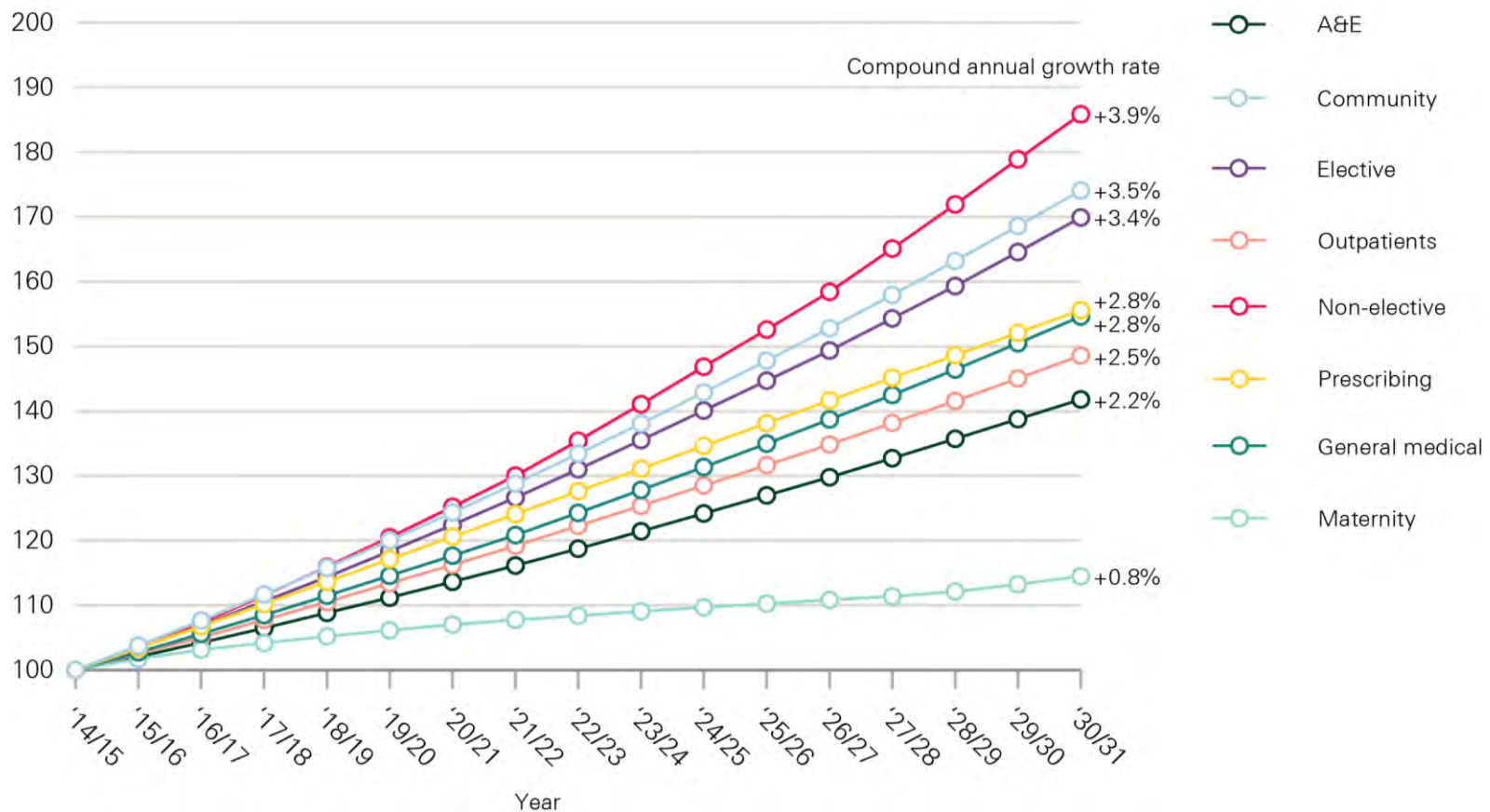


Source: The path to sustainability: Funding projections for the NHS in Wales to 2019/20 and 2030/31 (The Health Foundation, 2016)
<http://www.health.org.uk/publication/path-sustainability>

And rising activity along with rising costs add up to significant pressures

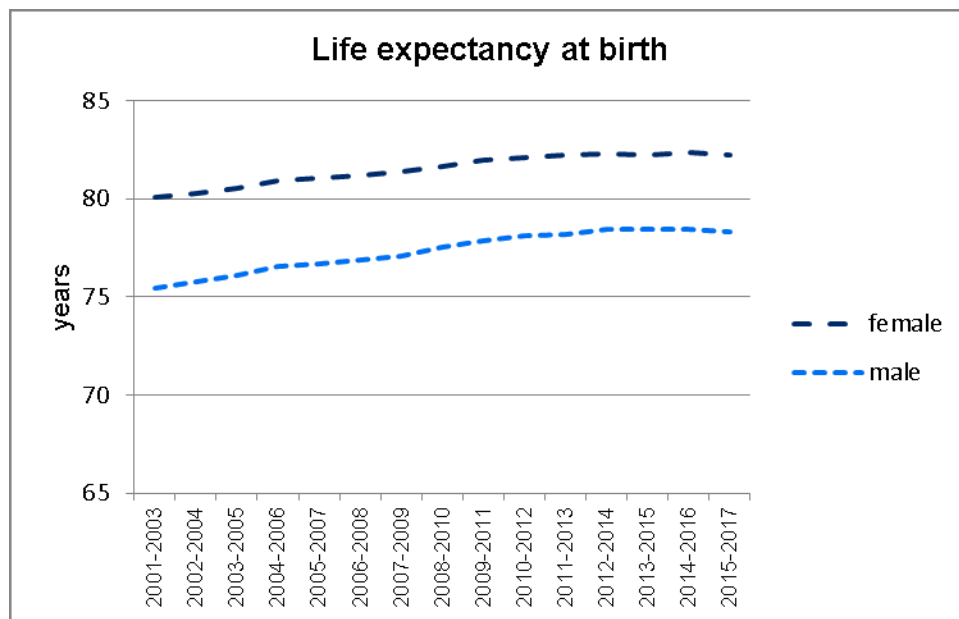
Spending on different treatment areas

Index of spending projections for individual treatment areas, as a result of rising activity and unit costs, 2015/16=100



Source: The path to sustainability: Funding projections for the NHS in Wales to 2019/20 and 2030/31 (The Health Foundation, 2016)
<http://www.health.org.uk/publication/path-sustainability>

The most recent figures show a slight decrease in life expectancy in Wales, following several years with little change. The slowdown in improvements in life expectancy is not unique to Wales and has also been observed in the UK, EU and elsewhere. The increase in life expectancy in Wales since 2003/05 is less than for the UK and EU.



Source: Office for National Statistics (ONS)
<https://www.ons.gov.uk/peoplepopulationandcommunity/healthandsocialcare/healthandlifeexpectancies/bulletins/healthstatelifeexpectanciesuk/previousReleases>

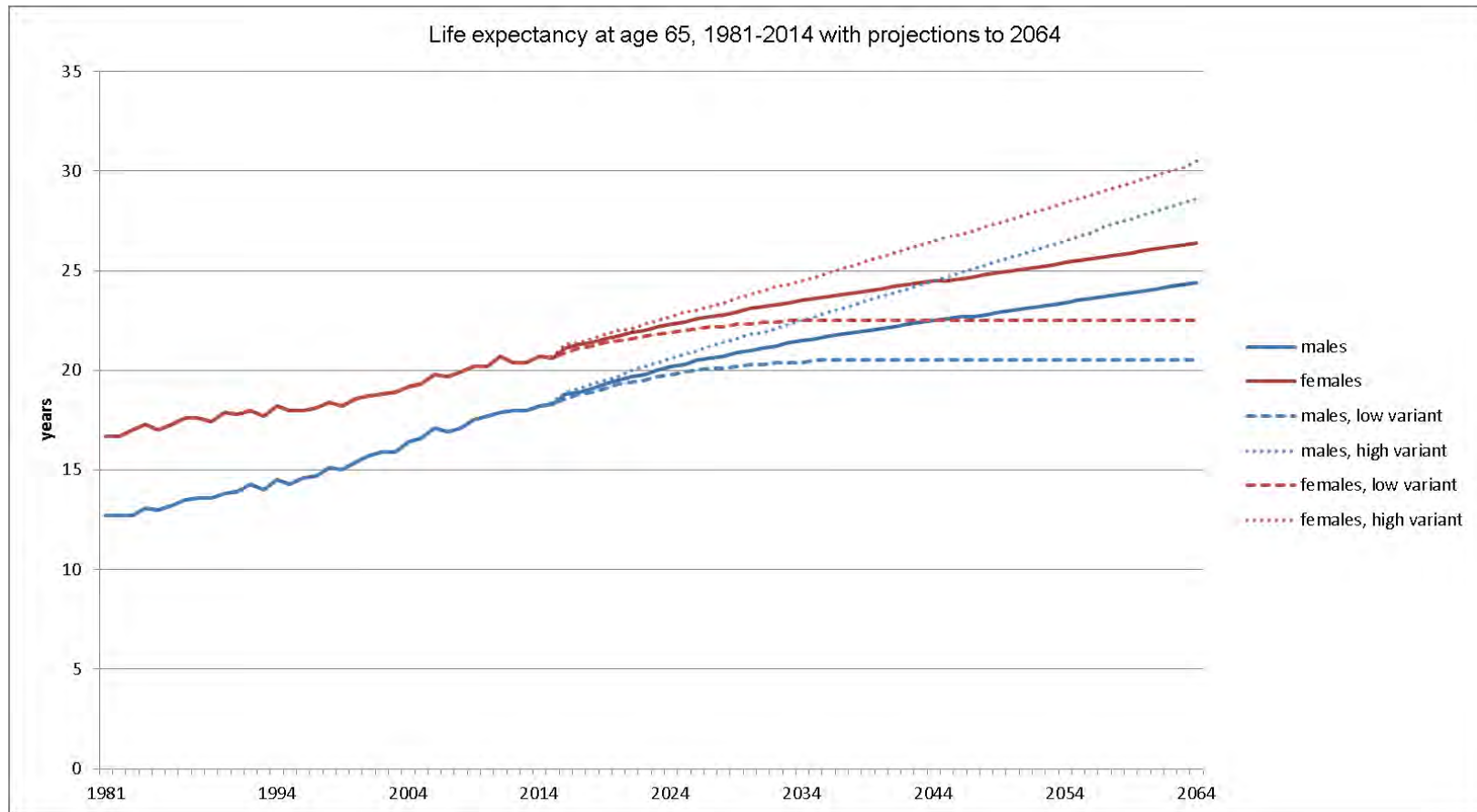
	males		females	
	2003/05	2015/17	2003/05	2015/17
Wales life expectancy at birth (years)	76.1	76.1	80.5	82.2
Difference in life expectancy between Wales and UK (years)	-0.4	-0.9	-0.4	-0.6
Difference in life expectancy between Wales and EU (27/28) (years)	0.9	0.1	-1.0	-1.4

Source: ONS (Wales and UK), Eurostat (EU)

http://appsso.eurostat.ec.europa.eu/nui/show.do?dataset=hlth_hlye&lang=en

<https://www.ons.gov.uk/peoplepopulationandcommunity/healthandsocialcare/healthandlifeexpectancies/bulletins/healthstatelifeexpectanciesuk/previousReleases>

And life expectancy is projected to continue to increase, but there are big uncertainties about how far this will continue



Source: ONS

<https://www.ons.gov.uk/peoplepopulationandcommunity/birthsdeathsandmarriages/lifeexpectancies/bulletins/pastandprojecteddatafromtheperiodandcohortlifetables/2014baseduk1981to2064>

But “healthy life expectancy” is important and may impact the nature of future pressures and health service use.

Overall, people can expect to spend just over three quarters of their life in good health; at age 65, people can expect to spend just over half their remaining life in good health.

Life expectancy and healthy life expectancy, Wales, 2013-15

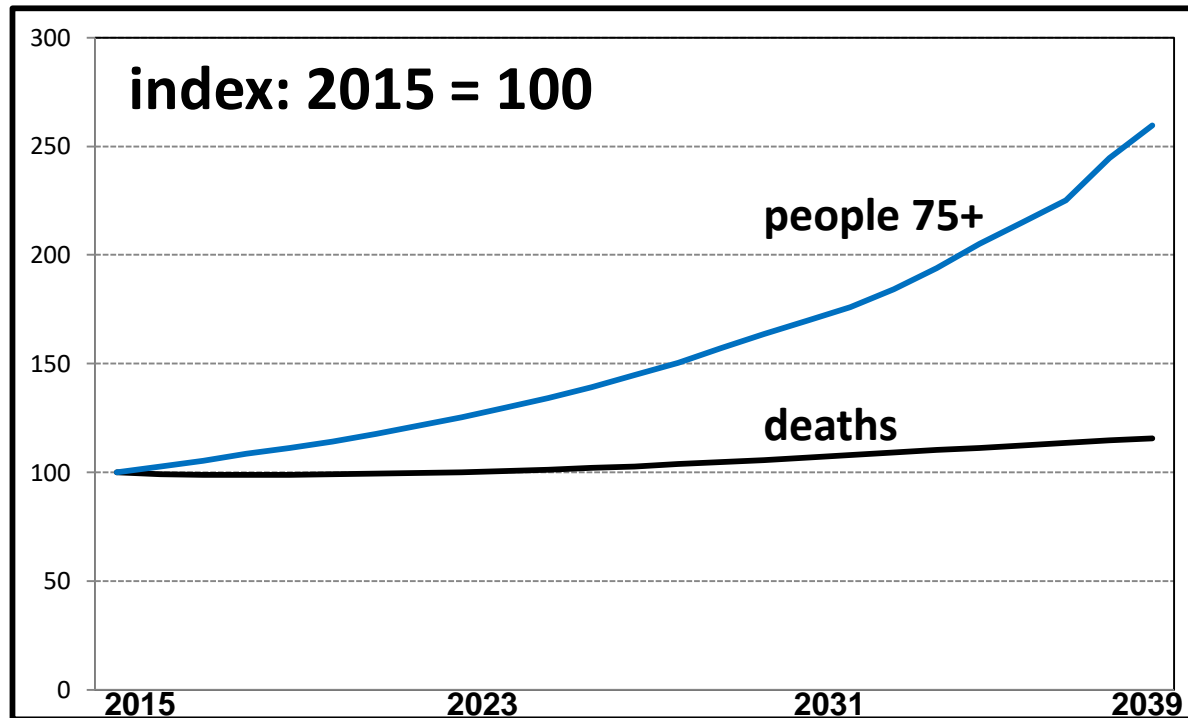
	Healthy Life expectancy	Life expectancy	% of life in good health
Males at birth	61.5	78.4	78.4
Females at birth	62.7	82.3	76.2
Males at age 65	9.8	18.1	54.0
Females at age 65	10.7	20.5	52.3

Source: Office for National Statistics

<https://www.ons.gov.uk/peoplepopulationandcommunity/healthandsocialcare/healthandlifeexpectancies/bulletins/healthstatelifeexpectanciesuk/2013to2015>

So although the number of people aged 75 and over is projected to increase sharply, the number of deaths is far more stable.

Wales: projections for deaths and people aged 75 and over

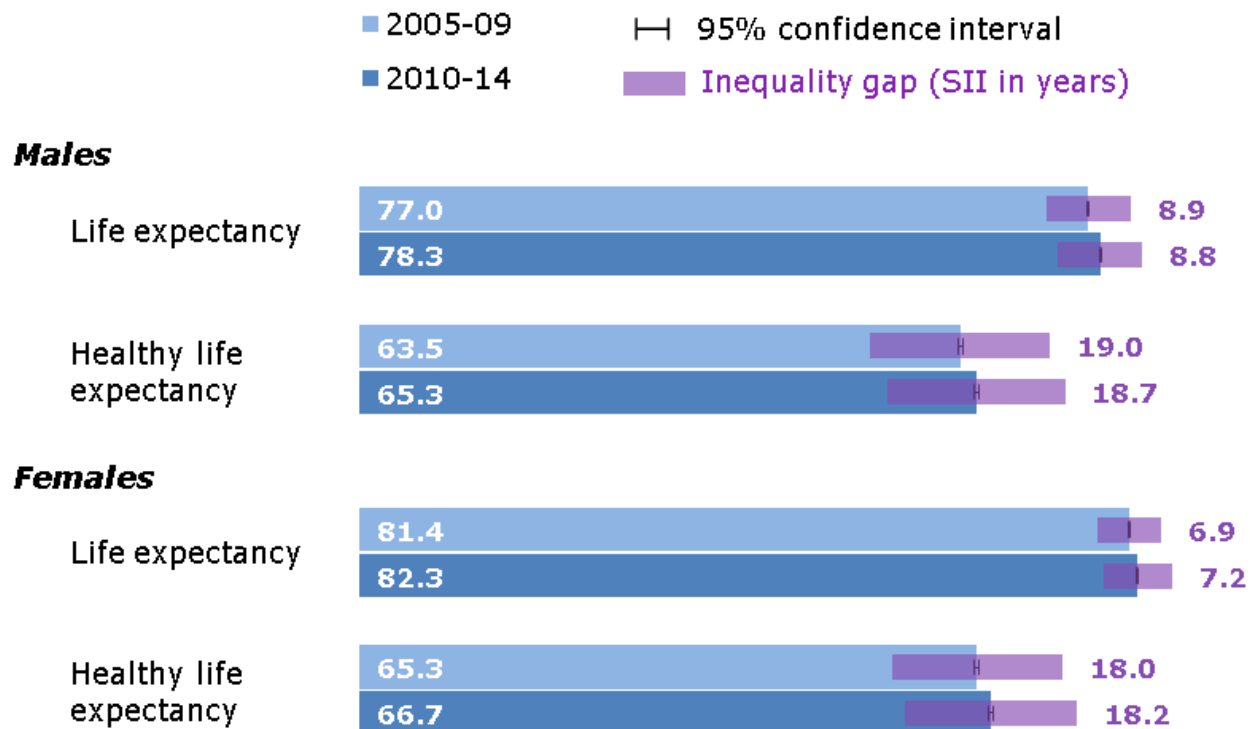


Source: ONS projections

The gap in life expectancy and healthy life expectancy between the most and least deprived areas shows no clear sign of reducing

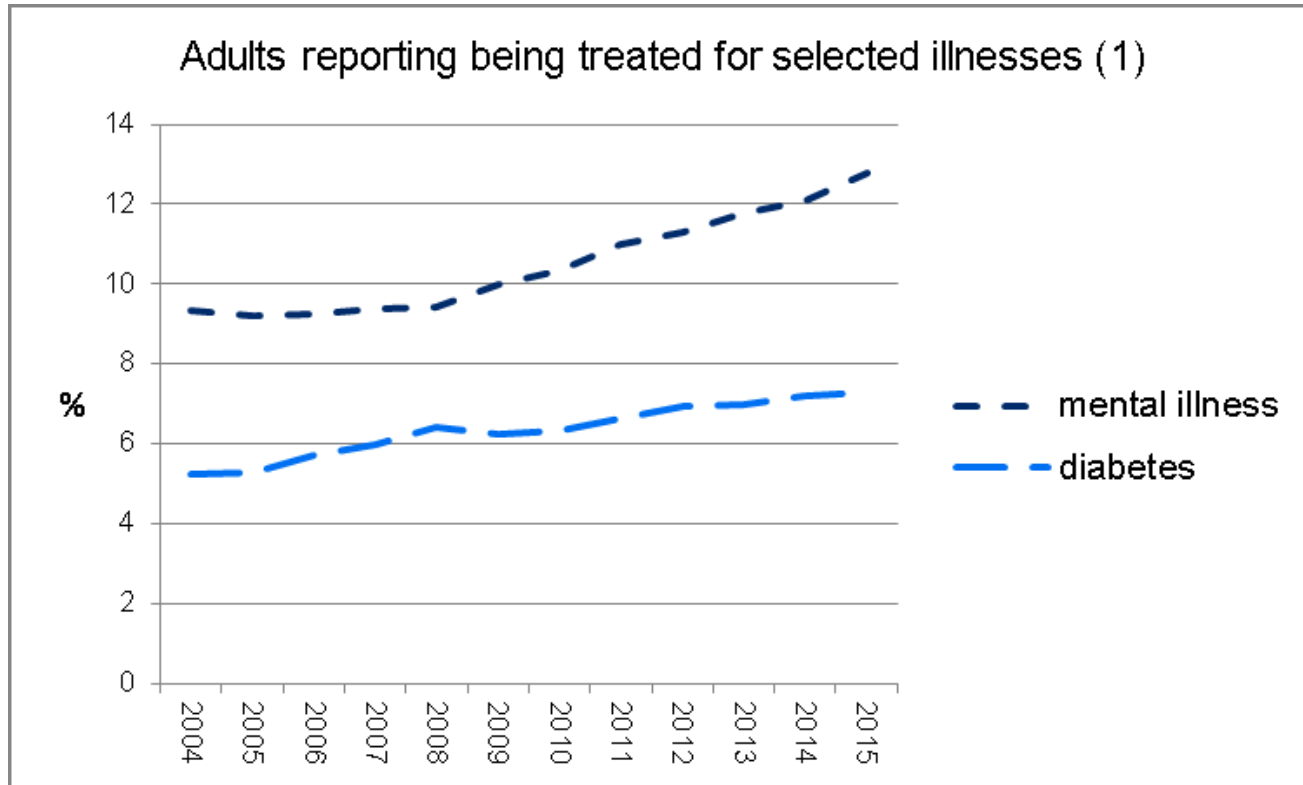
Comparison of life expectancy and healthy life expectancy at birth, with Slope Index of Inequality (SII), Wales, 2005-09 and 2010-14

Produced by Public Health Wales Observatory, using PHM & MYE (ONS), WHS & WIMD 2014 (WG)



Source: Public Health Wales, Measuring Inequalities 2016
<http://www.wales.nhs.uk/sitesplus/922/page/87234>

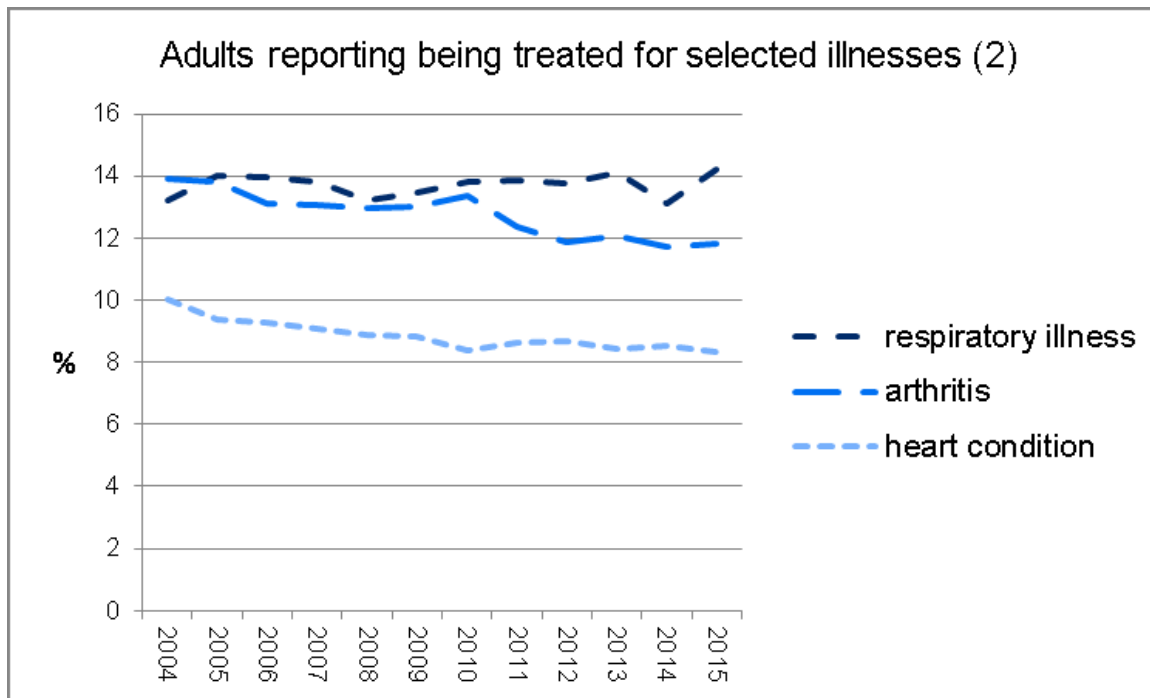
Rates of adults being treated for some conditions (e.g. diabetes and mental illness) have increased...



Source: Welsh Health Survey

<http://gov.wales/statistics-and-research/welsh-health-survey/?lang=en>

...but rates of adults being treated for some other conditions (eg respiratory illness, arthritis and heart condition) have fluctuated or dropped slightly; However, the growing and ageing population means that this will not necessarily translate into a stabilisation or decline of actual numbers being treated for these conditions

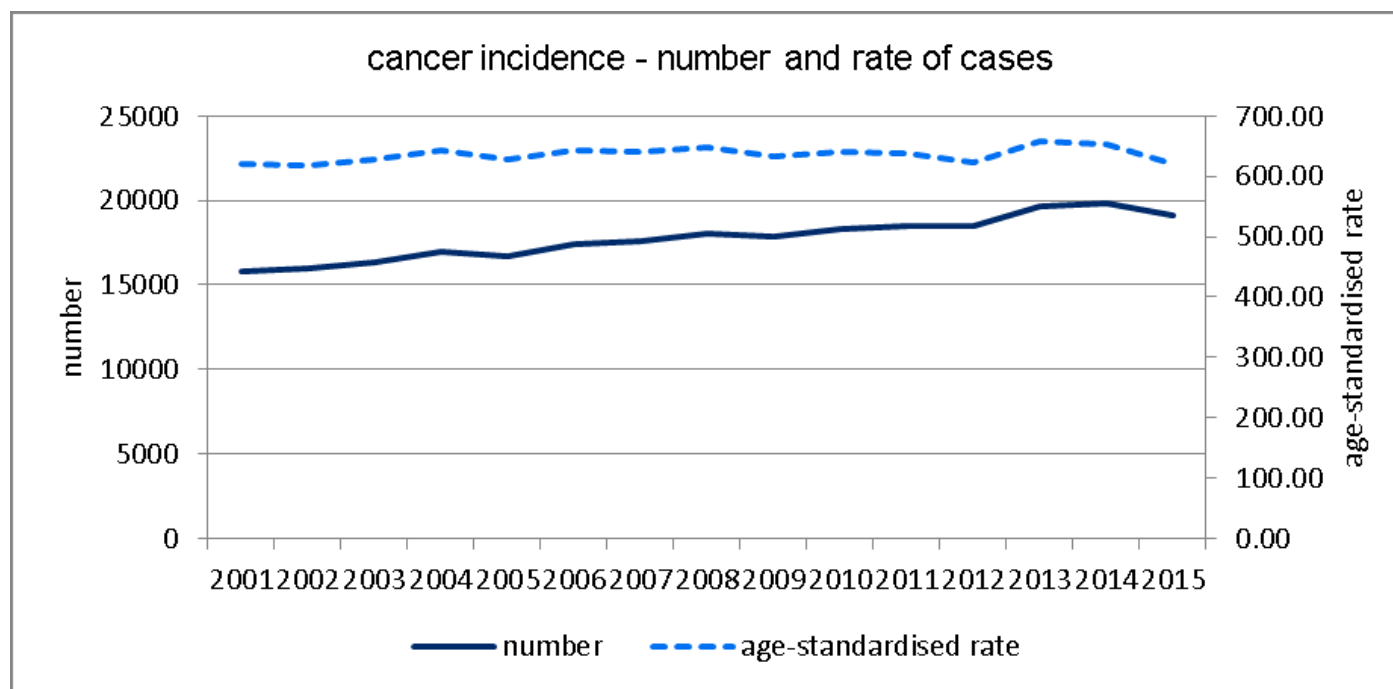


Source: Welsh Health Survey

<http://gov.wales/statistics-and-research/welsh-health-survey/?lang=en>

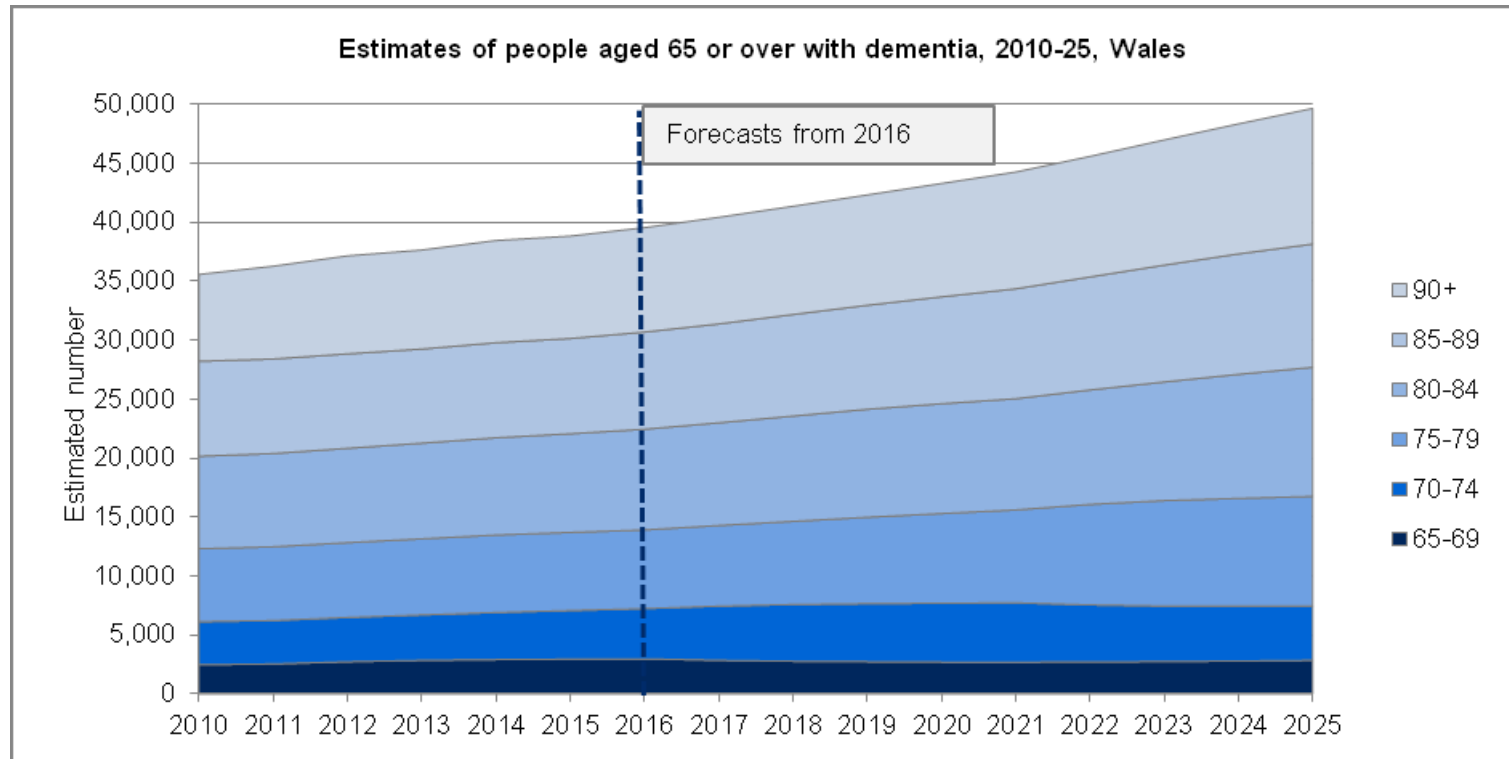
The number of new cancer cases has increased. However, after adjusting for the effects of the ageing population, rates were broadly stable

Rates for males decreased at about the same rate as rates for females increased



Source: Cancer Incidence in Wales 2015, WCISU, PHW
<http://www.wcisuwales.nhs.uk/cancer-incidence-in-wales-1>

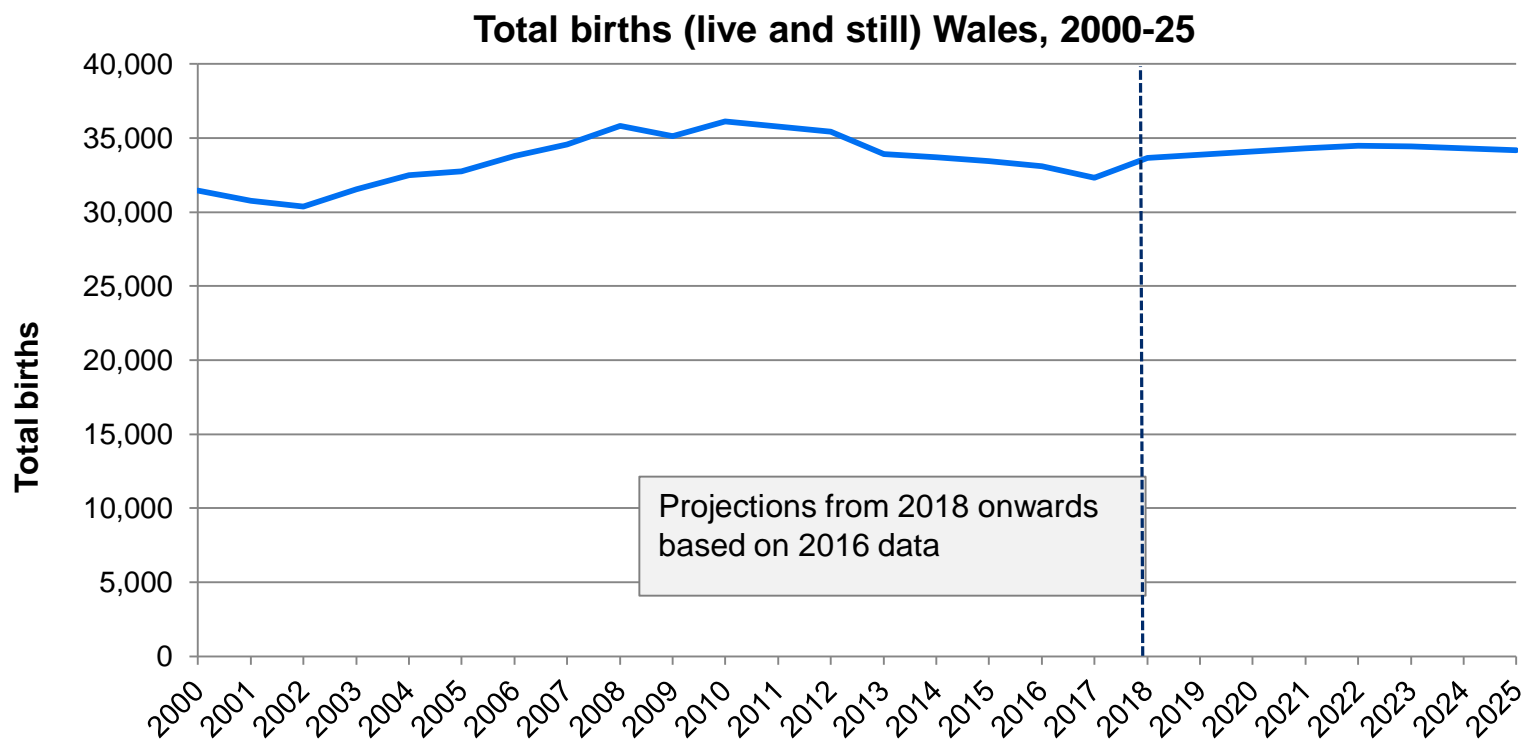
The ageing population is likely to lead to increased prevalence of dementia



As the number of older people is projected to increase, if the current estimated prevalence of dementia continues by 2025 there could be 50,000 people aged 65 or over living with dementia in Wales, nearly a quarter of them aged 90 or over.

Source: Estimates 2010-15 - <http://gov.wales/statistics-and-research/general-medical-services-contract/?lang=en>
Forecasts 2016-25 - Derived forecasts using ONS national projections, CFASII study (dementia prevalences)

Current projections suggest slight increases in fertility rates which will affect demand on services



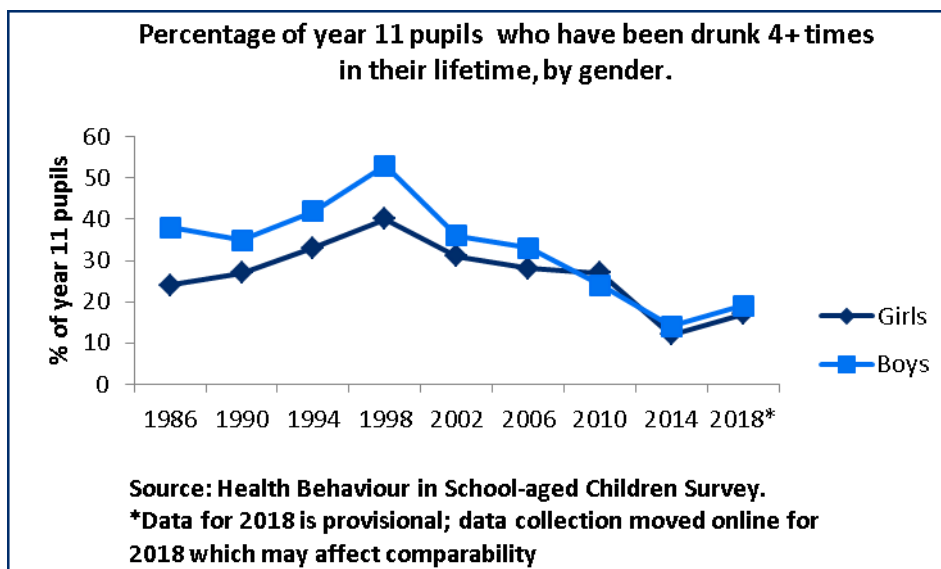
ONS projections assume that the long-term fertility rates are slightly higher than currently, resulting in an annual total of around 34,000 births.

The numbers of births and age profile of mothers may affect demand on services. In most developed countries, women have been increasingly delaying childbearing to later in life, which has resulted in rising fertility rates among older women.

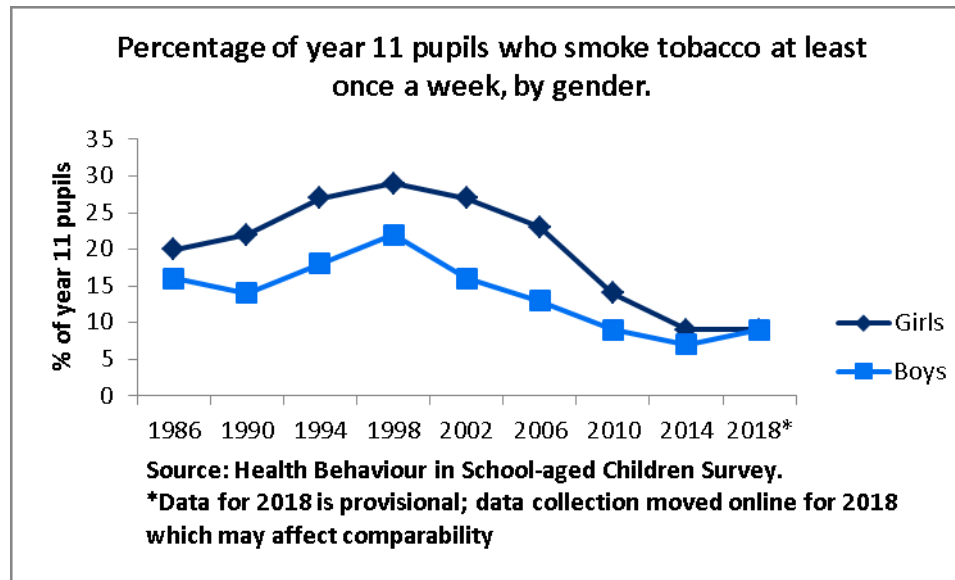
Source: ONS births summary and national population projections

<https://www.ons.gov.uk/peoplepopulationandcommunity/populationandmigration/populationprojections/datasets/tablea15principalprojectionwalessummary>

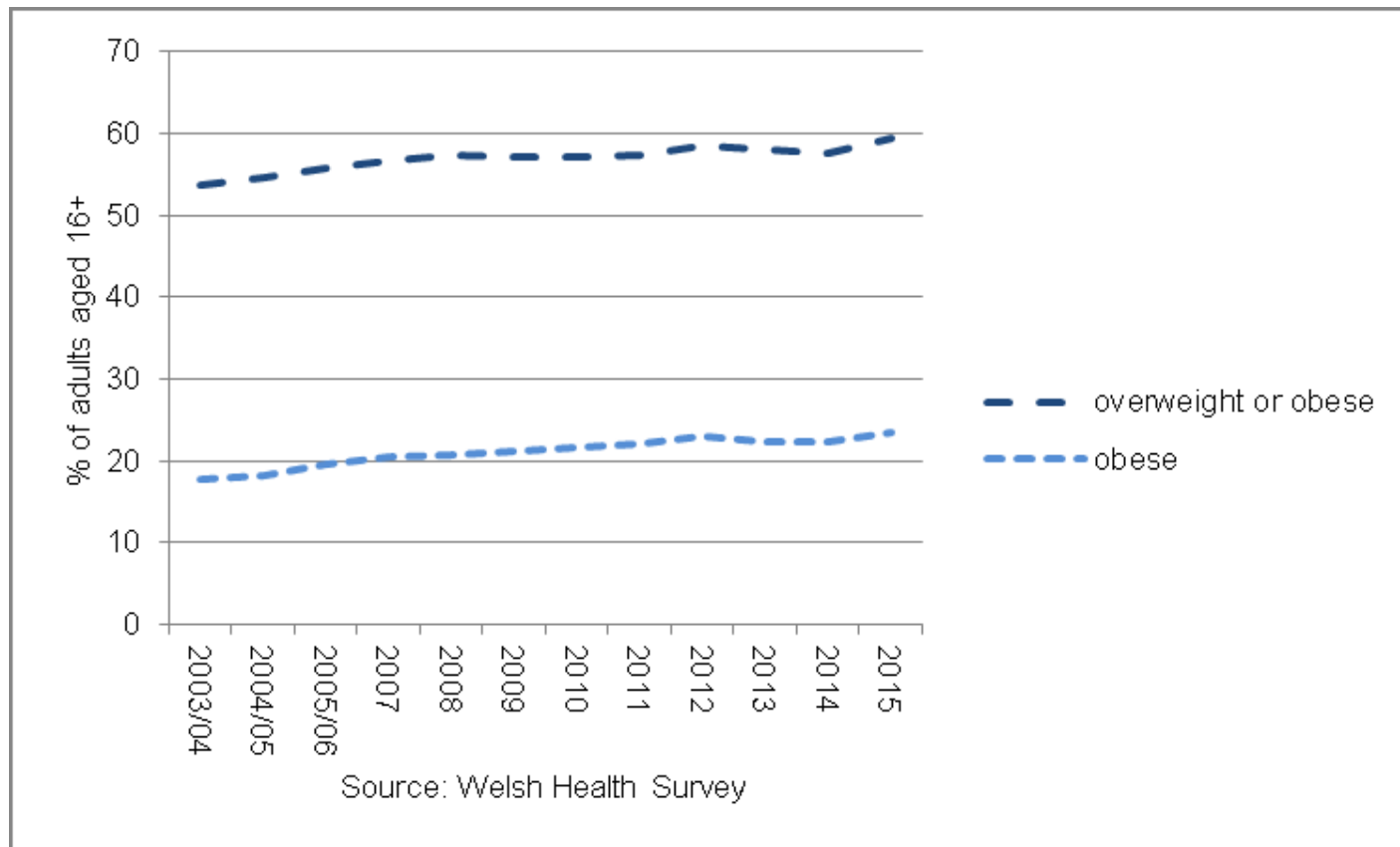
Lifestyle patterns will have a key influence on future incidence of disease. There are some signs of healthier lifestyles spreading among teenagers.



Fewer are smokers



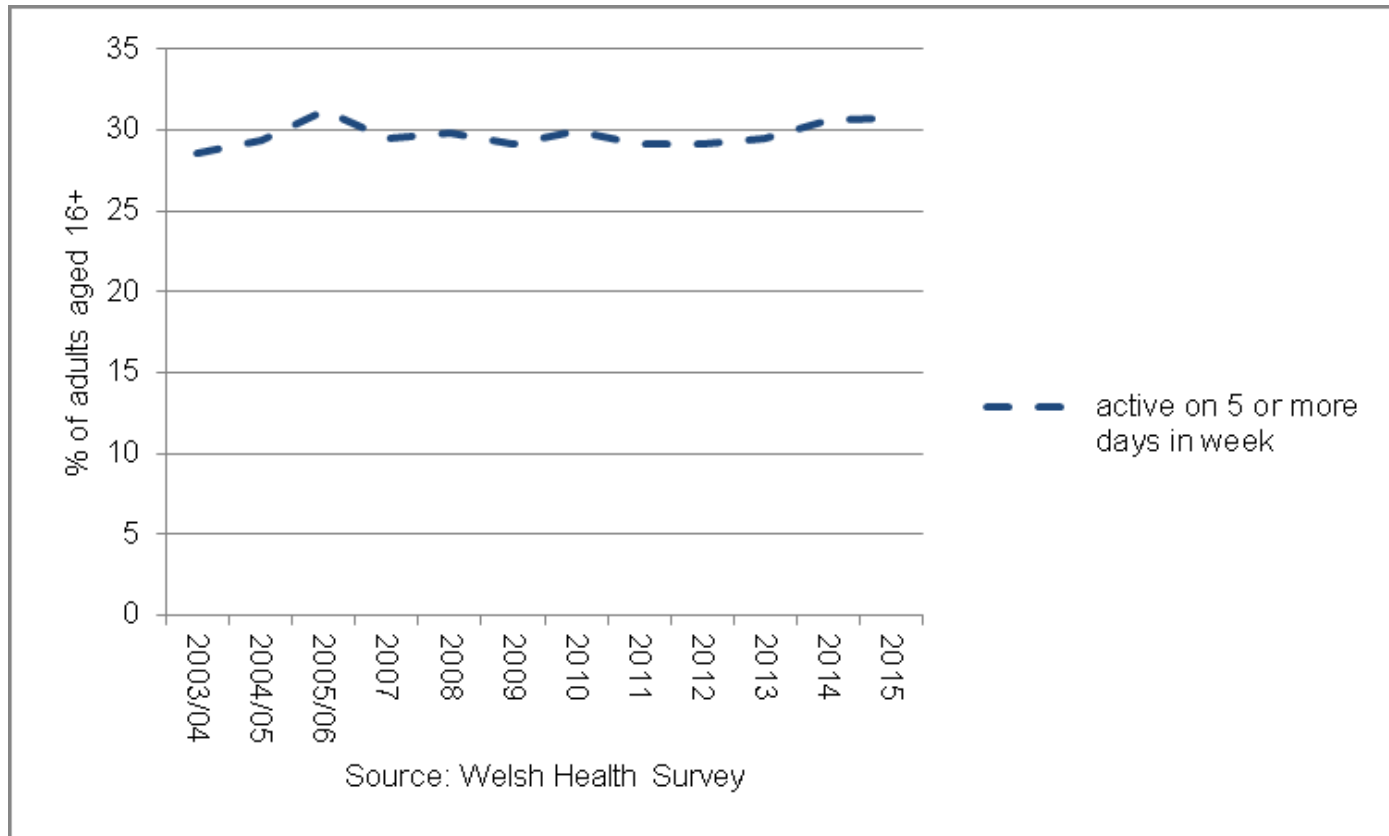
Obesity in adults has risen



Source: Welsh Health Survey 2015

<http://gov.wales/statistics-and-research/welsh-health-survey/?lang=en>

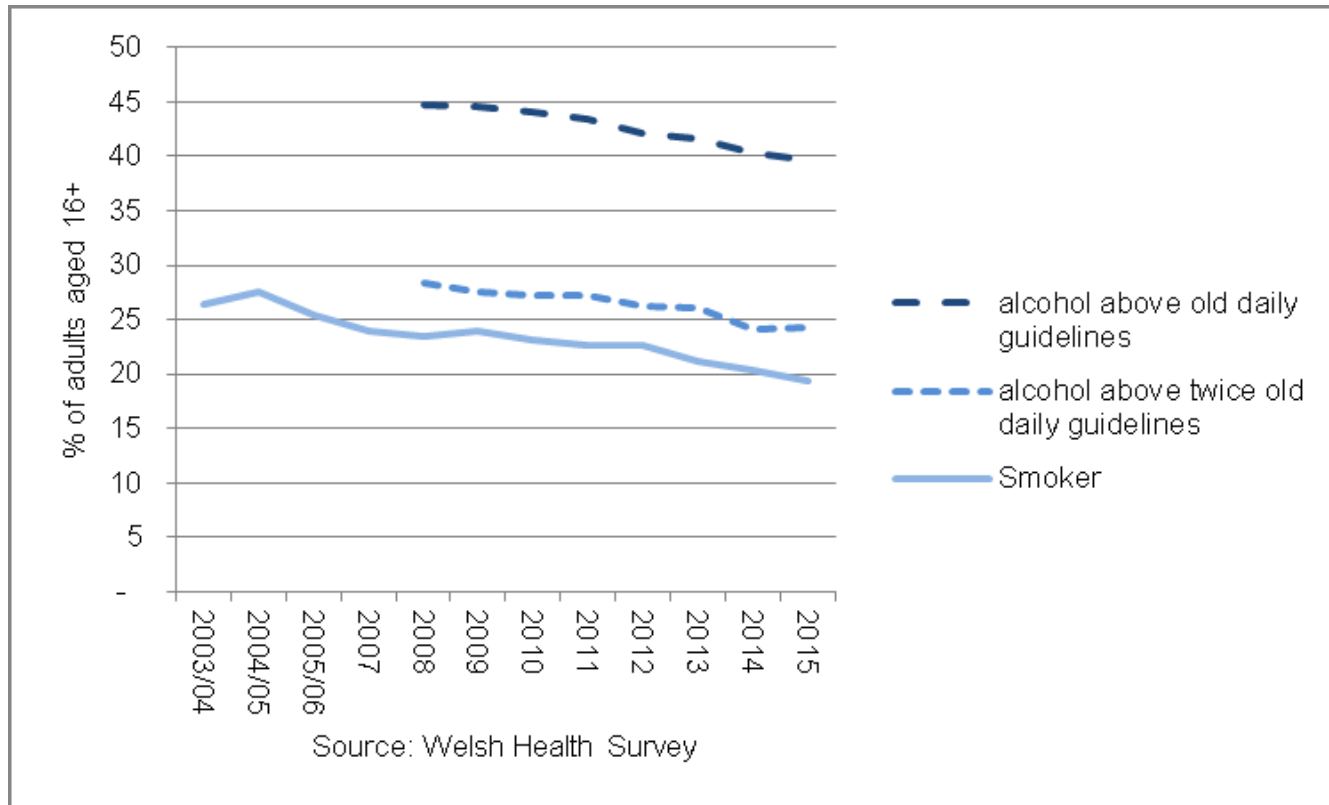
There has been little change in physical activity among adults



Source: Welsh Health Survey 2015

<http://gov.wales/statistics-and-research/welsh-health-survey/?lang=en>

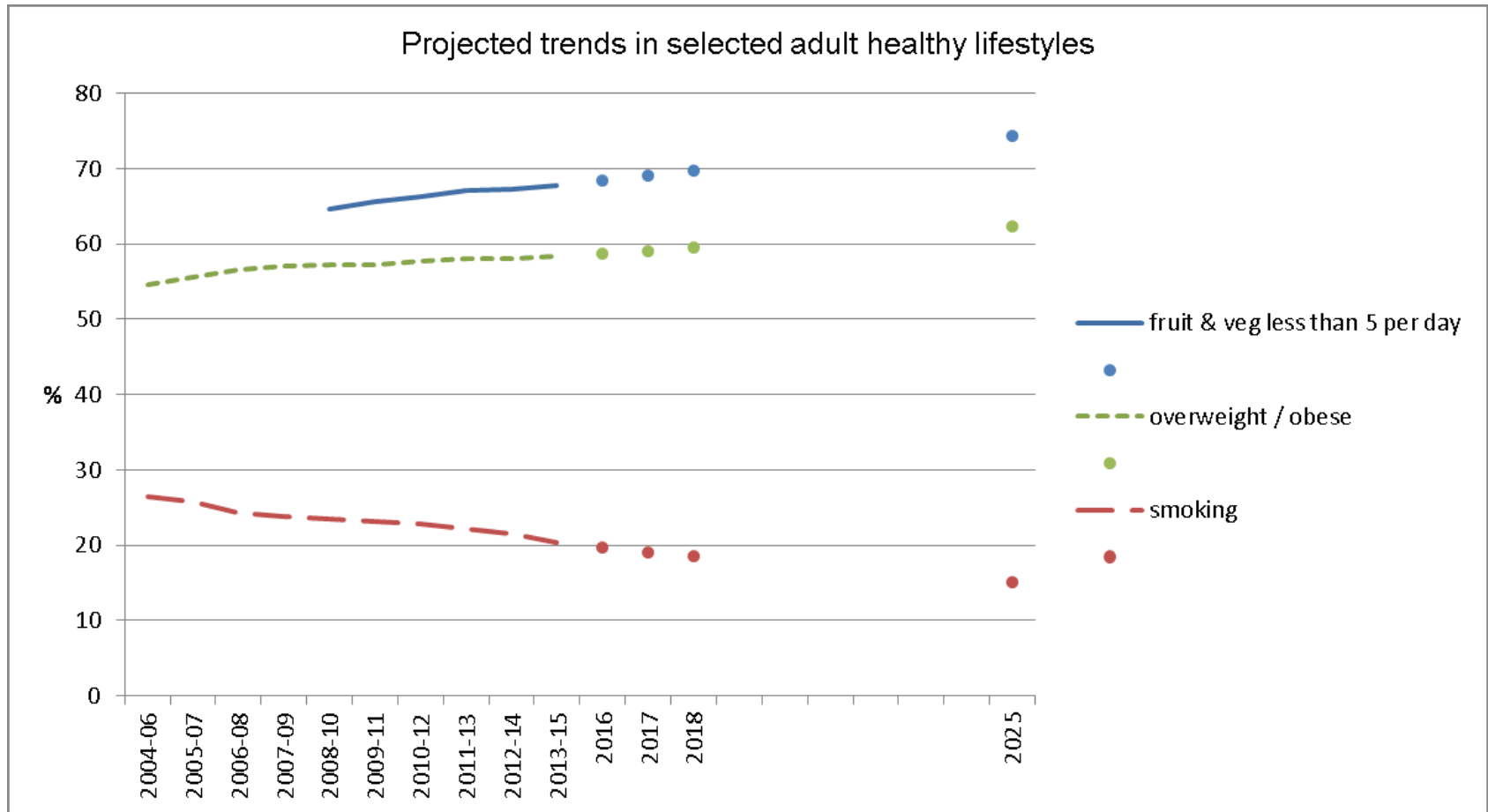
Smoking and alcohol consumption among adults have fallen



Source: Welsh Health Survey 2015

<http://gov.wales/statistics-and-research/welsh-health-survey/?lang=en>

It's projected that some healthy lifestyle behaviours will continue to improve (smoking) while others deteriorate (overweight & obesity, consumption of fruit & vegetables)



Public Health Wales, using Welsh Health Survey and population projections

<https://public.tableau.com/profile/publichealthwalesobservatory#!/vizhome/WBFGProjectionsLocalauthorities/Home?:iid&:tabs=no>

For more information on the Welsh Government Future Trends Report 2017, please visit the following address:

<http://gov.wales/statistics-and-research/future-trends/>

Background data slides are also available on the website for the other Themes of the Future Trends Report: Population; Economy & Infrastructure; Climate Change; Land Use & Infrastructure; and Society & Culture.