



## School Census Results, 2018

25 July 2018  
SFR 59/2018

The census data in this release relate to the position on Tuesday 16 January 2018. The teacher sickness absence data relates to the preceding calendar year. These figures are not included in the School Census. This information is collected directly from the local authorities in January each year.

### Key results

#### Schools

Overall, there were 26 fewer Local Authority (LA) maintained schools than at January 2017. This is mainly due to school mergers.



	2017		2018
LA Maintained Schools	1,547	↓	1,521
All Schools	1,617	↓	1,591
Nursery	11	→	11
Primary	1,287	↓	1,261
Middle	10	↑	13
Secondary	200	↓	195
Special	39	↑	41
Independent	70	→	70

#### Pupils

There were 604 more pupils in LA maintained schools than at January 2017.



2017		2018
466,508	↑	467,112

#### Free School Meals

The percentage of pupils aged 5-15 known to be eligible for free school meals decreased by 0.4 percentage points since January 2017.



2017		2018
17.8%	↓	17.4%



#### Class size

8.1 per cent of pupils (8,695) were in infant classes of over 30 pupils – down from 8.2 per cent (8,794) in January 2017.

### About this release

An annual report that presents data collected from the School Census, with additional information on teacher sickness absence.

It reports information for the number of pupils by age, gender, free school meal eligibility, ethnicity and special educational needs (SEN), together with information on the number of schools, teachers and support staff.

### In this release

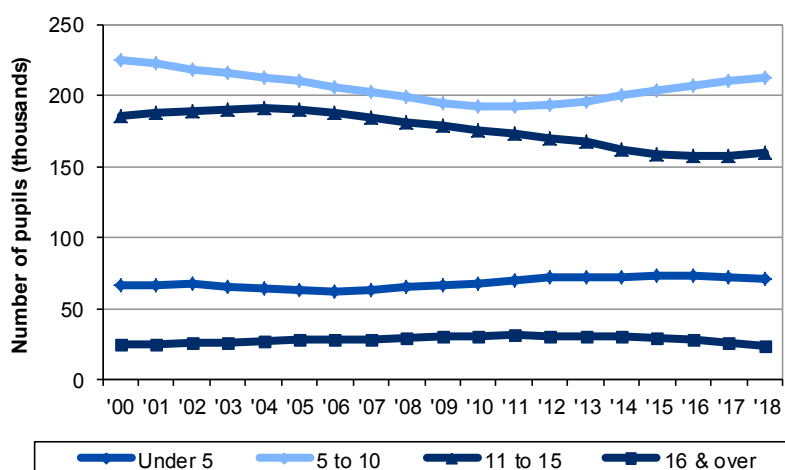
Schools and pupils	2
Staff	9
Free School Meals	14
Ethnic background	16
Special Educational Needs	17
Class size	20
Independent schools	22
Teacher sickness absence	24

## Schools and pupils

This section presents information on LA maintained schools and pupils. Local authorities meet their expenditure partly from council tax and partly from general grants made by the Welsh Government.

- The number of maintained Primary and Secondary **schools** continues to decrease, to 1,521 in January 2018. However, the majority of the schools which closed have merged to form new schools. The merging of Primary and Secondary schools into Middle schools started in 2012/13 and this sector has grown each year since, rising to 13 in January 2018 from 10 in January 2017. ([Table 1](#))
- The local authority with the most **schools** was Cardiff with 126 and the local authority with the fewest was Blaenau Gwent with 25 schools. ([Table 1](#))
- The total number of **pupils** in maintained schools was 467,112 in January 2018, an increase of around 2,000 pupils since January 2014. ([Table 3](#))
- The **Welsh Medium schools** follow the same pattern as above, the merging of schools reducing their total to 459 in January 2018. The total number of **pupils in Welsh medium schools** was 106,474 in January 2018, an increase of around 3,100 since January 2014. ([Table 2](#))
- Gwynedd had the highest number of **Welsh medium schools** (98 of 102 schools in Gwynedd), followed by Carmarthenshire (74 of 112) and Isle of Anglesey (46 of 49). Blaenau Gwent had the lowest number of Welsh medium schools (1 of 25). ([Table 2](#))
- Of the **pupils aged under 5** in maintained schools in Wales, the majority of them were attending school on a full time basis. ([Table 4](#))

**Chart 1: Number of pupils by age group, in maintained schools**



- The number of pupils aged under 5 has decreased from 72,126 pupils in January 2017 to 70,564 pupils in January 2018.
- The numbers of pupils aged 5 to 10 have been increasing since 2011, to reach 213,059 in 2018. This reflects the increasing birth rates in recent years.
- The numbers of pupils aged 11 to 15 increased from 158,212 (January 2017) to 159,386 (January 2018). Prior to 2016, they had been decreasing year on year since 2004 again reflecting the demographic consequence of lower birth rates in the 2000s.

**Table 1: Number of maintained schools by local authority, January 2018 (a)**

	Nursery	Primary	Middle	Secondary	Special (b)	Total
Isle of Anglesey	.	43	.	5	1	49
Gwynedd	.	86	1	13	2	102
Conwy	.	53	.	7	1	61
Denbighshire	.	46	1	7	2	56
Flintshire	.	64	.	11	2	77
Wrexham	1	58	.	9	1	69
Powys	.	79	1	11	3	94
Ceredigion	.	39	3	4	.	46
Pembrokeshire	.	58	.	8	1	67
Carmarthenshire	1	97	.	12	2	112
Swansea	.	79	.	14	2	95
Neath Port Talbot	.	55	2	7	2	66
Bridgend	.	48	.	9	2	59
The Vale of Glamorgan	2	44	1	7	1	55
Rhondda Cynon Taf	.	102	1	16	4	123
Merthyr Tydfil	1	22	.	4	1	28
Caerphilly	.	73	1	12	1	87
Blaenau Gwent	.	19	2	2	2	25
Torfaen	1	26	.	6	1	34
Monmouthshire	.	30	.	4	1	35
Newport	2	42	.	9	2	55
Cardiff	3	98	.	18	7	126
<b>Wales</b>	<b>11</b>	<b>1,261</b>	<b>13</b>	<b>195</b>	<b>41</b>	<b>1,521</b>
Wales – January 2017	11	1,287	10	200	39	1,547
Wales – January 2016	13	1,310	7	205	39	1,574
Wales – January 2015	13	1,330	6	207	39	1,595
Wales – January 2014	17	1,357	4	213	42	1,633

Source: School Census

(a) Nursery: age under 5. Primary: ages 3/4 to 10. Middle: ages 3/4 to 16/18. Secondary: ages 11 to 16/18.

(b) Special schools, both day and boarding, provide education for children with SEN who cannot be educated satisfactorily in mainstream schools.

**Table 2: Welsh medium schools and pupils by local authority, January 2018**

	Primary (a)		Middle (b)		Secondary (b)		Total	
	Schools	Pupils	Schools	Pupils	Schools	Pupils	Schools	Pupils
Isle of Anglesey	42	5,736	.	.	4	2,899	46	8,635
Gwynedd	85	9,551	1	615	12	5,273	98	15,439
Conwy	22	2,501	.	.	2	1,223	24	3,724
Denbighshire	16	2,385	.	.	3	2,982	19	5,367
Flintshire	5	856	.	.	1	502	6	1,358
Wrexham	8	1,775	.	.	1	759	9	2,534
Powys	20	2,499	1	488	3	1,761	24	4,748
Ceredigion	34	3,330	3	2,194	3	1,762	40	7,286
Pembrokeshire	18	2,678	.	.	1	882	19	3,560
Carmarthenshire	69	10,405	.	.	5	5,485	74	15,890
Swansea	11	3,269	.	.	2	1,704	13	4,973
Neath Port Talbot	9	1,970	1	1,323	.	.	10	3,293
Bridgend	4	1,081	.	.	1	623	5	1,704
The Vale of Glamorgan	6	1,689	1	1,120	.	.	7	2,809
Rhondda Cynon Taf	16	4,717	1	639	3	2,513	20	7,869
Merthyr Tydfil	2	762	.	.	.	.	2	762
Caerphilly	11	2,993	.	.	1	1,625	12	4,618
Blaenau Gwent	1	256	.	.	.	.	1	256
Torfaen	3	982	.	.	1	888	4	1,870
Monmouthshire	2	396	.	.	.	.	2	396
Newport	3	733	.	.	1	159	4	892
Cardiff	17	5,625	.	.	3	2,866	20	8,491
<b>Wales</b>	<b>404</b>	<b>66,189</b>	<b>8</b>	<b>6,379</b>	<b>47</b>	<b>33,906</b>	<b>459</b>	<b>106,474</b>
Wales – January 2017	420	66,612	6	4,247	49	34,986	475	105,845
Wales – January 2016	428	66,101	5	3,459	49	35,399	482	104,959
Wales – January 2015	435	65,460	4	2,448	50	36,485	489	104,393
Wales – January 2014	444	64,366	2	1,577	52	37,400	498	103,343

Source: School Census

(a) Primary schools include Welsh Medium, Dual Stream and Transitional schools.

(b) Includes Welsh Medium and Bilingual schools.

**Welsh medium schools:** for further information please see these [guidance notes](#).

**Table 3: Number of pupils by age group in maintained schools, 2014-2018 (a)**

		2014	2015	2016	2017	2018
Nursery	Under 5	1,353	1,076	1,019	866	815
	5 and over	0	0	0	0	0
	<b>All ages</b>	<b>1,353</b>	<b>1,076</b>	<b>1,019</b>	<b>866</b>	<b>815</b>
Primary	Under 5	70,655	71,713	72,014	70,176	68,467
	5 to 10	198,726	201,649	204,923	206,741	208,606
	11 and over	40	38	17	23	22
	<b>All ages</b>	<b>269,421</b>	<b>273,400</b>	<b>276,954</b>	<b>276,940</b>	<b>277,095</b>
Middle	Under 5	268	330	415	836	1,044
	5 to 10	660	970	1,104	2,294	2,925
	11 to 15	2,278	2,695	3,337	5,463	7,331
	16 and over	336	381	515	570	853
	<b>All ages</b>	<b>3,542</b>	<b>4,376</b>	<b>5,371</b>	<b>9,163</b>	<b>12,153</b>
Secondary	Under 16	157,840	154,445	152,284	150,618	149,922
	16 and over	28,587	27,963	26,385	24,194	22,296
	<b>All ages</b>	<b>186,427</b>	<b>182,408</b>	<b>178,669</b>	<b>174,812</b>	<b>172,218</b>
Special	Under 5	238	245	245	248	238
	5 to 10	1,185	1,225	1,297	1,399	1,525
	11 to 15	1,933	1,979	2,001	2,111	2,114
	16 and over	982	995	999	969	954
	<b>All ages</b>	<b>4,338</b>	<b>4,444</b>	<b>4,542</b>	<b>4,727</b>	<b>4,831</b>
<b>Total</b>	<b>All ages</b>	<b>465,081</b>	<b>465,704</b>	<b>466,555</b>	<b>466,508</b>	<b>467,112</b>

Source: School Census

(a) At January each year. Age as at 31 August in the previous year.

**Table 4: Number of pupils aged under 5 in maintained schools by local authority, January 2018 (a)**

	Full-time			Part-time			Total		
	Boys	Girls	Total	Boys	Girls	Total	Boys	Girls	Total
Isle of Anglesey	380	381	761	331	321	652	711	702	1,413
Gwynedd	657	574	1,231	578	522	1,100	1,235	1,096	2,331
Conwy	574	553	1,127	522	531	1,053	1,096	1,084	2,180
Denbighshire	589	544	1,133	558	538	1,096	1,147	1,082	2,229
Flintshire	830	878	1,708	856	769	1,625	1,686	1,647	3,333
Wrexham	837	795	1,632	792	807	1,599	1,629	1,602	3,231
Powys	668	601	1,269	286	230	516	954	831	1,785
Ceredigion	434	420	854	180	193	373	614	613	1,227
Pembrokeshire	847	763	1,610	533	494	1,027	1,380	1,257	2,637
Carmarthenshire	1,590	1,540	3,130	373	353	726	1,963	1,893	3,856
Swansea	1,373	1,227	2,600	1,728	1,556	3,284	3,101	2,783	5,884
Neath Port Talbot	729	729	1,458	971	941	1,912	1,700	1,670	3,370
Bridgend	1,626	1,497	3,123	196	185	381	1,822	1,682	3,504
The Vale of Glamorgan	848	777	1,625	916	937	1,853	1,764	1,714	3,478
Rhondda Cynon Taf	2,423	2,411	4,834	519	508	1,027	2,942	2,919	5,861
Merthyr Tydfil	692	661	1,353	141	169	310	833	830	1,663
Caerphilly	1,145	1,206	2,351	1,188	1,122	2,310	2,333	2,328	4,661
Blaenau Gwent	442	426	868	480	423	903	922	849	1,771
Torfaen	570	569	1,139	519	474	993	1,089	1,043	2,132
Monmouthshire	465	415	880	244	226	470	709	641	1,350
Newport	1,060	959	2,019	996	880	1,876	2,056	1,839	3,895
Cardiff	2,177	1,971	4,148	2,355	2,270	4,625	4,532	4,241	8,773
<b>Wales</b>	<b>20,956</b>	<b>19,897</b>	<b>40,853</b>	<b>15,262</b>	<b>14,449</b>	<b>29,711</b>	<b>36,218</b>	<b>34,346</b>	<b>70,564</b>
Wales – January 2017	21,834	20,966	42,800	15,053	14,273	29,326	36,887	35,239	72,126
Wales – January 2016	22,379	21,568	43,947	15,183	14,563	29,746	37,562	36,131	73,693
Wales – January 2015	22,753	21,721	44,474	14,753	14,137	28,890	37,506	35,858	73,364
Wales – January 2014	22,425	21,352	43,777	14,825	13,912	28,737	37,250	35,264	72,514

Source: School Census

(a) Age as at 31 August 2017.

This table has been re-designed to focus on the under 5 age group at local authority level following increased interest in the early years of education.

**Table 5: Pupil numbers by local authority, January 2018**

	All pupils						Aged 5-15 (a)				
	Nursery	Primary	Middle	Secondary	Special	Total	Primary	Middle	Secondary	Special	Total
Isle of Anglesey	.	5,909	.	3,717	92	9,718	4,501	.	3,165	72	7,738
Gwynedd	.	9,673	615	6,492	215	16,995	7,442	533	5,753	157	13,885
Conwy	.	9,051	.	6,530	221	15,802	6,885	.	5,342	165	12,392
Denbighshire	.	8,744	472	6,105	277	15,598	6,543	393	5,354	216	12,506
Flintshire	.	14,024	.	9,162	209	23,395	10,703	.	8,011	155	18,869
Wrexham	34	13,124	.	6,113	295	19,566	9,927	.	5,863	212	16,002
Powys	.	9,460	488	6,992	267	17,207	7,701	394	6,021	198	14,314
Ceredigion	.	4,441	2,194	2,948	.	9,583	3,425	1,744	2,368	.	7,537
Pembrokeshire	.	10,694	.	6,500	155	17,349	8,059	.	5,715	120	13,894
Carmarthenshire	95	15,951	.	11,087	132	27,265	12,195	.	9,571	103	21,869
Swansea	.	22,317	.	13,341	188	35,846	16,441	.	12,012	124	28,577
Neath Port Talbot	.	12,205	2,829	5,651	244	20,929	8,964	2,494	5,461	223	17,142
Bridgend	.	13,532	.	9,044	359	22,935	10,039	.	7,474	246	17,759
The Vale of Glamorgan	147	13,010	1,120	7,972	240	22,489	9,765	921	6,600	170	17,456
Rhondda Cynon Taf	.	22,365	639	15,088	543	38,635	16,605	514	12,944	378	30,441
Merthyr Tydfil	78	5,830	.	2,833	174	8,915	4,264	.	2,832	118	7,214
Caerphilly	.	17,191	901	10,169	147	28,408	12,609	759	9,267	98	22,733
Blaenau Gwent	.	4,911	2,895	1,348	172	9,326	3,535	2,504	1,348	144	7,531
Torfaen	20	8,678	.	6,209	113	15,020	6,570	.	5,405	88	12,063
Monmouthshire	.	6,823	.	4,787	32	11,642	5,473	.	3,926	32	9,431
Newport	150	15,420	.	10,014	182	25,766	11,688	.	8,382	143	20,213
Cardiff	291	33,742	.	20,116	574	54,723	25,294	.	17,108	477	42,879
<b>Wales</b>	<b>815</b>	<b>277,095</b>	<b>12,153</b>	<b>172,218</b>	<b>4,831</b>	<b>467,112</b>	<b>208,628</b>	<b>10,256</b>	<b>149,922</b>	<b>3,639</b>	<b>372,445</b>
Wales – January 2017	866	276,940	9,163	174,812	4,727	466,508	206,764	7,757	150,618	3,510	368,649
Wales – January 2016	1,019	276,954	5,371	178,669	4,542	466,555	204,940	4,441	152,284	3,298	364,963
Wales – January 2015	1,076	273,400	4,376	182,408	4,444	465,704	201,686	3,665	154,445	3,204	363,000
Wales – January 2014	1,353	269,421	3,542	186,427	4,338	465,081	198,765	2,938	157,840	3,118	362,661

Source: School Census  
(a) Age as at 31 August 2017.

**Table 6: Full-time equivalent pupils by local authority, January 2018**

	Nursery	Primary	Middle	Secondary	Special	Total
Isle of Anglesey	.	5,583.5	.	3,717.0	91.5	9,392.0
Gwynedd	.	9,142.5	596.0	6,492.0	214.5	16,445.0
Conwy	.	8,528.0	.	6,530.0	217.5	15,275.5
Denbighshire	.	8,201.0	468.5	6,105.0	275.0	15,049.5
Flintshire	.	13,214.0	.	9,162.0	206.5	22,582.5
Wrexham	22.5	12,336.0	.	6,113.0	295.0	18,766.5
Powys	.	9,202.5	488.0	6,992.0	266.5	16,949.0
Ceredigion	.	4,300.5	2,148.0	2,948.0	.	9,396.5
Pembrokeshire	.	10,180.5	.	6,500.0	155.0	16,835.5
Carmarthenshire	95.0	15,588.0	.	11,087.0	132.0	26,902.0
Swansea	.	20,675.5	.	13,341.0	187.5	34,204.0
Neath Port Talbot	.	11,286.0	2,792.5	5,651.0	243.5	19,973.0
Bridgend	.	13,341.5	.	9,044.0	359.0	22,744.5
The Vale of Glamorgan	73.5	12,178.5	1,100.0	7,972.0	238.5	21,562.5
Rhondda Cynon Taf	.	21,861.5	629.0	15,088.0	543.0	38,121.5
Merthyr Tydfil	66.5	5,686.5	.	2,833.0	174.0	8,760.0
Caerphilly	.	16,053.0	884.0	10,169.0	147.0	27,253.0
Blaenau Gwent	.	4,571.5	2,783.0	1,348.0	172.0	8,874.5
Torfaen	10.5	8,192.0	.	6,209.0	112.0	14,523.5
Monmouthshire	.	6,588.0	.	4,787.0	32.0	11,407.0
Newport	75.5	14,557.0	.	10,014.0	181.5	24,828.0
Cardiff	145.5	31,577.0	.	20,116.0	572.0	52,410.5
<b>Wales</b>	<b>489.0</b>	<b>262,844.5</b>	<b>11,889.0</b>	<b>172,218.0</b>	<b>4,815.5</b>	<b>452,256.0</b>
Wales – January 2017	514.5	262,853.0	8,953.0	174,812.0	4,711.5	451,844.0
Wales – January 2016	593.0	262,615.0	5,280.0	178,669.0	4,525.0	451,682.0
Wales – January 2015	633.0	259,476.0	4,323.0	182,408.0	4,418.5	451,258.5
Wales – January 2014	785.0	255,691.5	3,496.5	186,426.5	4,311.5	450,711.0

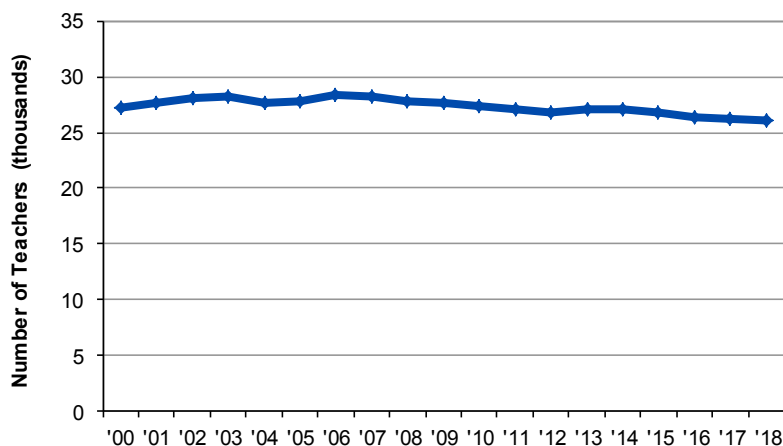
Source: School Census

Full-time equivalent (FTE) pupil numbers count part-time pupils as 0.5.



## Teachers and support staff

Chart 2: Number of qualified teachers in maintained schools



- The number of qualified teachers in 2018 was 26,129 – the lowest number since 2000. This is largely due to school closures and amalgamations.
- The number of qualified teachers has remained fairly steady over the long term – ranging between a peak of 28,461 in 2006 and a low of 26,129 in 2018.

- The **number of qualified teachers** in maintained schools in each local authority ranged between 3,147 in Cardiff, to 480 in Merthyr Tydfil. ([Table 7](#))
- There were 23,871 **full-time equivalent** qualified teachers in maintained schools, 39 fewer than at January 2017. ([Table 8](#))
- The number of **full-time equivalent qualified teachers in maintained schools** was highest in Cardiff at 2,853 teachers and lowest in Merthyr Tydfil at 456 teachers. ([Table 8](#))
- The **number of teachers teaching either Welsh first language or other subjects through the medium of Welsh** in primary, middle and secondary schools was 5,515, up from 5,359 at January 2017. Data on the teaching of Welsh are available on [StatsWales](#).
- The **pupil teacher ratio** for all LA maintained schools was 18.9 in January 2018, unchanged from January 2017. ([Table 9](#))
- Ceredigion had the lowest primary **pupil teacher ratio** at 19.2, and Rhondda Cynon Taf had the highest at 25.1. The lowest secondary pupil teacher ratio was in Conwy at 15.4, and the highest was in Pembrokeshire at 17.7. ([Table 9](#))
- The **pupil teacher ratio** was highest in primary schools at 22.0 and lowest in special schools at 6.7. The pupil teacher ratio in secondary schools was 16.5. ([Table 9](#))
- There were 23,784 **full-time equivalent support staff** in maintained schools, up from 23,559 at January 2017. ([Table 10](#))

**Table 7: Number of qualified teachers by local authority, January 2018**

	Nursery	Primary	Middle	Secondary	Special	Total
Isle of Anglesey	.	306	.	246	13	565
Gwynedd	.	513	39	442	27	1,021
Conwy	.	477	.	457	28	962
Denbighshire	.	425	31	395	35	886
Flintshire	.	704	.	613	33	1,350
Wrexham	3	675	.	409	36	1,123
Powys	.	544	37	483	43	1,107
Ceredigion	.	268	148	192	.	608
Pembrokeshire	.	514	.	402	24	940
Carmarthenshire	7	834	.	708	23	1,572
Swansea	.	995	.	859	32	1,886
Neath Port Talbot	.	572	171	361	42	1,146
Bridgend	.	612	.	590	57	1,259
The Vale of Glamorgan	5	627	72	513	54	1,271
Rhondda Cynon Taf	.	923	39	944	67	1,973
Merthyr Tydfil	3	276	.	178	23	480
Caerphilly	.	768	57	681	33	1,539
Blaenau Gwent	.	227	168	79	35	509
Torfaen	2	368	.	383	17	770
Monmouthshire	.	334	.	300	9	643
Newport	5	712	.	623	32	1,372
Cardiff	20	1,668	.	1,354	105	3,147
<b>Wales</b>	<b>45</b>	<b>13,342</b>	<b>762</b>	<b>11,212</b>	<b>768</b>	<b>26,129</b>
Wales – January 2017	38	13,459	571	11,360	744	26,172
Wales – January 2016	48	13,558	373	11,727	747	26,453
Wales – January 2015	48	13,624	317	12,047	719	26,755
Wales – January 2014	59	13,670	236	12,378	721	27,064

Source: School Census

**Table 8: Full-time equivalent qualified teachers by local authority, January 2018**

	Nursery	Primary	Middle	Secondary	Special	Total
Isle of Anglesey	.	278.8	.	231.6	13.0	523.3
Gwynedd	.	448.3	36.3	411.4	25.6	921.6
Conwy	.	423.3	.	424.5	26.2	874.0
Denbighshire	.	371.1	26.5	369.2	33.3	800.0
Flintshire	.	633.5	.	547.0	28.6	1,209.1
Wrexham	3.0	587.5	.	386.6	30.6	1,007.7
Powys	.	447.7	35.5	432.2	38.6	954.1
Ceredigion	.	224.4	132.4	172.2	.	529.0
Pembrokeshire	.	449.6	.	366.4	21.6	837.6
Carmarthenshire	5.4	750.1	.	666.2	22.5	1,444.2
Swansea	.	882.3	.	789.2	30.4	1,701.9
Neath Port Talbot	.	516.7	163.3	341.5	39.4	1,060.9
Bridgend	.	570.7	.	561.2	54.4	1,186.4
The Vale of Glamorgan	4.5	559.4	68.2	481.4	49.0	1,162.5
Rhondda Cynon Taf	.	869.5	36.9	907.4	64.5	1,878.3
Merthyr Tydfil	3.0	257.1	.	172.6	23.0	455.7
Caerphilly	.	714.0	52.0	632.2	31.4	1,429.6
Blaenau Gwent	.	211.9	162.6	76.9	32.2	483.6
Torfaen	2.0	344.4	.	364.2	16.0	726.6
Monmouthshire	.	288.5	.	275.1	9.0	572.6
Newport	4.6	645.3	.	579.3	30.2	1,259.4
Cardiff	16.4	1,466.9	.	1,270.3	99.0	2,852.7
<b>Wales</b>	<b>38.9</b>	<b>11,940.8</b>	<b>713.7</b>	<b>10,458.7</b>	<b>718.6</b>	<b>23,870.6</b>
Wales – January 2017	33.5	12,055.6	532.7	10,593.7	694.3	23,909.8
Wales – January 2016	42.3	12,170.8	345.2	10,983.9	693.6	24,235.8
Wales – January 2015	43.4	12,240.2	290.0	11,268.8	668.2	24,510.8
Wales – January 2014	52.8	12,308.2	221.7	11,578.8	660.9	24,822.5

Source: School Census

FTE of part-time teachers expresses the teachers' service in hours as a proportion of a school week: 32.5 hours for maintained schools.

**Table 9: Pupil teacher ratios within schools by local authority, January 2018**

	Nursery	Primary	Middle	Secondary	Special	Total
Isle of Anglesey	.	20.0	.	16.1	7.0	17.9
Gwynedd	.	20.4	16.4	15.8	8.4	17.8
Conwy	.	20.1	.	15.4	8.3	17.5
Denbighshire	.	22.1	17.7	16.5	8.3	18.8
Flintshire	.	20.9	.	16.8	7.2	18.7
Wrexham	7.5	21.0	.	15.8	9.6	18.6
Powys	.	20.6	13.7	16.2	6.9	17.8
Ceredigion	.	19.2	16.2	17.1	.	17.8
Pembrokeshire	.	22.6	.	17.7	7.2	20.1
Carmarthenshire	17.5	20.8	.	16.6	5.9	18.6
Swansea	.	23.4	.	16.9	6.2	20.1
Neath Port Talbot	.	21.8	17.1	16.5	6.2	18.8
Bridgend	.	23.4	.	16.1	6.6	19.2
The Vale of Glamorgan	16.4	21.8	16.1	16.6	4.9	18.5
Rhondda Cynon Taf	.	25.1	17.1	16.6	8.4	20.3
Merthyr Tydfil	22.2	22.1	.	16.4	7.6	19.2
Caerphilly	.	22.5	17.0	16.1	4.7	19.1
Blaenau Gwent	.	21.6	17.1	17.5	5.3	18.4
Torfaen	5.3	23.8	.	17.0	7.0	20.0
Monmouthshire	.	22.8	.	17.4	3.6	19.9
Newport	16.4	22.6	.	17.3	6.0	19.7
Cardiff	8.9	21.5	.	15.8	5.8	18.4
<b>Wales</b>	<b>12.6</b>	<b>22.0</b>	<b>16.7</b>	<b>16.5</b>	<b>6.7</b>	<b>18.9</b>
Wales – January 2017	15.4	21.8	16.8	16.5	6.8	18.9
Wales – January 2016	14.0	21.6	15.3	16.3	6.5	18.6
Wales – January 2015	14.6	21.2	14.9	16.2	6.6	18.4
Wales – January 2014	14.9	20.8	15.8	16.1	6.5	18.2

Source: School Census

Pupil Teacher Ratio (PTR): calculated by dividing the FTE number of pupils by the FTE number of qualified teachers (head teachers, acting head teachers, assistant head teachers, deputy heads and other qualified teachers).

**Table 10: Full-time equivalent support staff by local authority, January 2018**

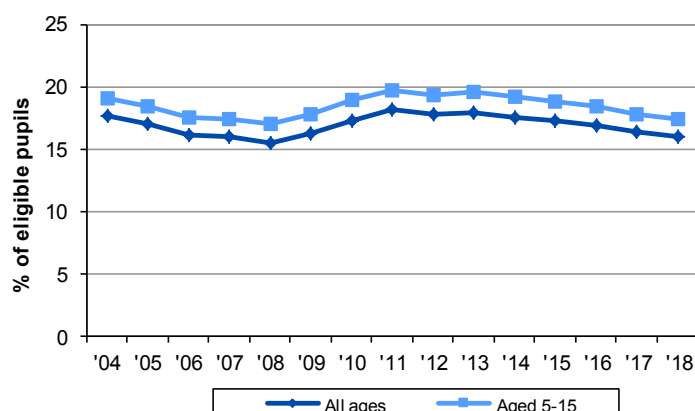
	Nursery	Primary	Middle	Secondary	Special	Total
Isle of Anglesey	.	318.8	.	173.7	34.3	526.8
Gwynedd	.	478.0	29.5	234.6	79.8	821.9
Conwy	.	411.6	.	228.2	109.0	748.9
Denbighshire	.	439.5	21.4	256.8	106.1	823.8
Flintshire	.	764.5	.	308.2	90.3	1,163.0
Wrexham	9.1	766.5	.	252.3	165.8	1,193.7
Powys	.	459.4	19.5	233.2	117.7	829.8
Ceredigion	.	294.5	191.1	157.6	.	643.2
Pembrokeshire	.	676.4	.	299.8	83.7	1,059.9
Carmarthenshire	7.2	882.4	.	479.1	91.3	1,460.0
Swansea	.	1,264.9	.	554.4	107.8	1,927.1
Neath Port Talbot	.	636.5	104.7	177.2	112.2	1,030.6
Bridgend	.	701.2	.	257.5	209.0	1,167.7
The Vale of Glamorgan	10.0	559.3	21.8	220.2	158.6	970.0
Rhondda Cynon Taf	.	1,099.6	18.6	429.1	169.2	1,716.6
Merthyr Tydfil	7.6	285.4	.	77.8	64.5	435.4
Caerphilly	.	877.9	26.5	307.9	98.0	1,310.2
Blaenau Gwent	.	275.2	186.4	44.1	88.8	594.6
Torfaen	2.7	477.8	.	183.9	82.1	746.5
Monmouthshire	.	396.4	.	148.6	17.6	562.6
Newport	12.8	722.7	.	358.8	95.9	1,190.1
Cardiff	21.4	1,861.2	.	782.8	196.1	2,861.5
<b>Wales</b>	<b>70.8</b>	<b>14,649.8</b>	<b>619.5</b>	<b>6,165.8</b>	<b>2,278.0</b>	<b>23,783.9</b>
Wales – January 2017	93.5	14,720.0	439.0	6,241.1	2,065.3	23,559.0
Wales – January 2016	76.1	15,032.1	250.5	6,531.8	2,104.4	23,994.9
Wales – January 2015	84.8	15,295.2	219.7	6,801.0	2,040.3	24,441.0
Wales – January 2014	104.0	15,095.2	153.4	6,980.8	2,021.1	24,354.5

Source: School Census

## Free school meals (FSM) ([Table 11](#))

Pupils are eligible for [free school meals](#) if their families are in receipt of certain benefits/support payments.

**Chart 3: Percentage of pupils known to be eligible for free school meals**



- The percentage of pupils known to be eligible for free school meals in primary, middle, secondary and special schools has fluctuated over the last decade, generally decreasing from 2004 to 2008 and then increasing year on year to 2011. There has been a decrease between 2013 and 2018.

- The **number of pupils** eligible for free meals has decreased from 76,224 pupils in January 2017 to 74,568 pupils in January 2018.
- The **percentage of pupils** known to be eligible for free meals has decreased from 16.3 in January 2017 to 16.0 in January 2018.
- The **number of pupils aged 5-15** eligible for free meals has decreased from 65,689 pupils in January 2017 to 64,882 pupils in January 2018.
- The **percentage of pupils aged 5-15** known to be eligible for free meals has decreased from 17.8 in January 2017 to 17.4 in January 2018.
- The percentage of pupils known to be eligible for free meals was highest in special schools at 41.3 per cent of pupils and 42.2 per cent of pupils aged 5-15.
- The **number of pupils** eligible for free meals was highest in Cardiff at 9,759 and lowest in Ceredigion at 1,009.
- Monmouthshire had the lowest **percentage of pupils** eligible for free meals at 9.9, and Blaenau Gwent had the highest at 20.9.
- The **number of pupils aged 5-15** eligible for free meals was highest in Cardiff at 8,658 and lowest in Ceredigion at 861.
- Monmouthshire had the lowest **percentage of pupils aged 5-15** eligible for free meals at 10.9, and Blaenau Gwent had the highest at 22.7.

**Table 11: Pupils known to be eligible for free school meals, January 2018**

	All pupils										Aged 5-15 (a)									
	Primary & Nursery (b)		Middle		Secondary		Special		Total		Primary		Middle		Secondary		Special		Total	
	Num- ber	Per Cent	Num- ber	Per Cent	Num- ber	Per Cent	Num- ber	Per Cent	Num- ber	Per Cent	Num- ber	Per Cent	Num- ber	Per Cent	Num- ber	Per Cent	Num- ber	Per Cent	Num- ber	Per Cent
Isle of Anglesey	806	13.6	.	.	524	14.1	31	33.7	1,361	14.0	682	15.2	.	.	483	15.3	23	31.9	1,188	15.4
Gwynedd	1,139	11.8	52	8.5	657	10.1	52	24.2	1,900	11.2	971	13.0	49	9.2	633	11.0	42	26.8	1,695	12.2
Conwy	1,313	14.5	.	.	831	12.7	85	38.5	2,229	14.1	1,136	16.5	.	.	766	14.3	68	41.2	1,970	15.9
Denbighshire	1,456	16.7	25	5.3	884	14.5	116	41.9	2,481	15.9	1,241	19.0	22	5.6	845	15.8	92	42.6	2,200	17.6
Flintshire	1,957	14.0	.	.	1,126	12.3	68	32.5	3,151	13.5	1,716	16.0	.	.	1,082	13.5	52	33.5	2,850	15.1
Wrexham	1,989	15.1	.	.	872	14.3	124	42.0	2,985	15.3	1,704	17.2	.	.	862	14.7	85	40.1	2,651	16.6
Powys	1,031	10.9	35	7.2	651	9.3	90	33.7	1,807	10.5	890	11.6	34	8.6	606	10.1	67	33.8	1,597	11.2
Ceredigion	515	11.6	218	9.9	276	9.4	.	.	1,009	10.5	423	12.4	188	10.8	250	10.6	.	.	861	11.4
Pembrokeshire	1,451	13.6	.	.	920	14.2	50	32.3	2,421	14.0	1,237	15.3	.	.	875	15.3	43	35.8	2,155	15.5
Carmarthenshire	2,541	15.8	.	.	1,488	13.4	57	43.2	4,086	15.0	2,036	16.7	.	.	1,390	14.5	46	44.7	3,472	15.9
Swansea	3,832	17.2	.	.	2,281	17.1	77	41.0	6,190	17.3	3,255	19.8	.	.	2,204	18.3	48	38.7	5,507	19.3
Neath Port Talbot	2,386	19.5	558	19.7	1,057	18.7	132	54.1	4,133	19.7	2,080	23.2	539	21.6	1,044	19.1	122	54.7	3,785	22.1
Bridgend	2,545	18.8	.	.	1,316	14.6	161	44.8	4,022	17.5	1,883	18.8	.	.	1,200	16.1	109	44.3	3,192	18.0
The Vale of Glamorgan	1,462	11.1	73	6.5	832	10.4	80	33.3	2,447	10.9	1,247	12.8	66	7.2	768	11.6	60	35.3	2,141	12.3
Rhondda Cynon Taf	4,885	21.8	36	5.6	2,644	17.5	259	47.7	7,824	20.3	3,638	21.9	30	5.8	2,445	18.9	182	48.1	6,295	20.7
Merthyr Tydfil	1,135	19.2	.	.	569	20.1	61	35.1	1,765	19.8	841	19.7	.	.	569	20.1	43	36.4	1,453	20.1
Caerphilly	3,109	18.1	258	28.6	1,839	18.1	61	41.5	5,267	18.5	2,560	20.3	239	31.5	1,778	19.2	41	41.8	4,618	20.3
Blaenau Gwent	956	19.5	649	22.4	275	20.4	71	41.3	1,951	20.9	772	21.8	600	24.0	275	20.4	60	41.7	1,707	22.7
Torfaen	1,547	17.8	.	.	1,000	16.1	39	34.5	2,586	17.2	1,285	19.6	.	.	948	17.5	32	36.4	2,265	18.8
Monmouthshire	697	10.2	.	.	424	8.9	32	100.0	1,153	9.9	605	11.1	.	.	393	10.0	32	100.0	1,030	10.9
Newport	2,489	16.0	.	.	1,486	14.8	66	36.3	4,041	15.7	2,129	18.2	.	.	1,412	16.8	51	35.7	3,592	17.8
Cardiff	5,973	17.6	.	.	3,505	17.4	281	49.0	9,759	17.8	5,198	20.6	.	.	3,223	18.8	237	49.7	8,658	20.2
<b>Wales</b>	<b>45,214</b>	<b>16.3</b>	<b>1,904</b>	<b>15.7</b>	<b>25,457</b>	<b>14.8</b>	<b>1,993</b>	<b>41.3</b>	<b>74,568</b>	<b>16.0</b>	<b>37,529</b>	<b>18.0</b>	<b>1,767</b>	<b>17.2</b>	<b>24,051</b>	<b>16.0</b>	<b>1,535</b>	<b>42.2</b>	<b>64,882</b>	<b>17.4</b>
Wales – January 2017	46,268	16.7	1,495	16.3	26,531	15.2	1,930	40.8	76,224	16.3	37,903	18.3	1,395	18.0	24,919	16.5	1,472	41.9	65,689	17.8
Wales – January 2016	47,967	17.3	669	12.5	27,943	15.6	1,897	41.8	78,476	16.8	38,943	19.0	605	13.6	26,069	17.1	1,423	43.1	67,040	18.4
Wales – January 2015	49,247	17.9	632	14.4	28,859	15.8	1,930	43.4	80,668	17.3	39,525	19.6	572	15.6	26,815	17.4	1,476	46.1	68,388	18.8
Wales – January 2014	49,396	18.2	577	16.3	29,730	15.9	1,835	42.3	81,538	17.5	39,881	20.1	534	18.2	27,589	17.5	1,414	45.3	69,418	19.1

Source: School Census

(a) Age as at 31 August 2017.

(b) Nursery school figures are too small to show separately.

## Ethnic background

This is the ethnic group with which the pupil identifies her/himself.

- Of the **total number of pupils aged 5 or over** at primary, middle, secondary and special schools in Wales, January 2018, 88.5 per cent of pupils were identified as White British. This figure has been falling slightly for each of the past five years with all other ethnic backgrounds showing increases over the same period.
- The number of pupils in the **Any other White background** group have increased by 3,400 since 2014 and **Mixed** ethnic background pupils have increased by 2,600 since 2014.
- The **percentage of pupils** whose ethnic background was identified as minority ethnic origin was 11.0 and 0.5 per cent were unknown or not stated.
- Of the pupils whose ethnic background was identified as **Black**, 80.7 per cent of them were identified as **Black African**.

**Table 12: Number of pupils aged 5 or over by ethnic background, January 2014-2018**

Ethnic background	2014		2015		2016		2017		2018	
	Number	Per cent (a)	Number	Per cent (a)	Number	Per cent (a)	Number	Per cent (a)	Number	Per cent (a)
<b>White</b>	<b>364,260</b>	<b>92.8</b>	<b>363,031</b>	<b>92.5</b>	<b>362,290</b>	<b>92.2</b>	<b>362,721</b>	<b>92.0</b>	<b>363,528</b>	<b>91.7</b>
White British	355,085	90.5	352,850	89.9	351,145	89.4	350,795	88.9	350,830	88.5
Traveller	346	0.1	378	0.1	385	0.1	389	0.1	433	0.1
Gypsy/ Roma	545	0.1	579	0.1	611	0.2	623	0.2	589	0.1
Any other White background	8,284	2.1	9,224	2.4	10,149	2.6	10,914	2.8	11,676	2.9
<b>Mixed</b>	<b>9,337</b>	<b>2.4</b>	<b>9,872</b>	<b>2.5</b>	<b>10,592</b>	<b>2.7</b>	<b>11,166</b>	<b>2.8</b>	<b>11,947</b>	<b>3.0</b>
White and Black Caribbean	2,172	0.6	2,227	0.6	2,314	0.6	2,374	0.6	2,456	0.6
White and Black African	1,120	0.3	1,244	0.3	1,398	0.4	1,524	0.4	1,691	0.4
White and Asian	2,115	0.5	2,212	0.6	2,351	0.6	2,436	0.6	2,594	0.7
Any other mixed background	3,930	1.0	4,189	1.1	4,529	1.2	4,832	1.2	5,206	1.3
<b>Asian</b>	<b>8,696</b>	<b>2.2</b>	<b>8,914</b>	<b>2.3</b>	<b>9,185</b>	<b>2.3</b>	<b>9,341</b>	<b>2.4</b>	<b>9,592</b>	<b>2.4</b>
Indian	1,830	0.5	1,931	0.5	2,056	0.5	2,130	0.5	2,200	0.6
Pakistani	2,866	0.7	2,947	0.8	3,009	0.8	3,057	0.8	3,081	0.8
Bangladeshi	3,064	0.8	3,119	0.8	3,188	0.8	3,203	0.8	3,273	0.8
Any other Asian background	936	0.2	917	0.2	932	0.2	951	0.2	1,038	0.3
<b>Black</b>	<b>3,005</b>	<b>0.8</b>	<b>3,169</b>	<b>0.8</b>	<b>3,355</b>	<b>0.9</b>	<b>3,462</b>	<b>0.9</b>	<b>3,596</b>	<b>0.9</b>
Black Caribbean	194	0.0	187	0.0	194	0.0	199	0.1	204	0.1
Black African	2,452	0.6	2,598	0.7	2,743	0.7	2,826	0.7	2,903	0.7
Any other Black background	359	0.1	384	0.1	418	0.1	437	0.1	489	0.1
<b>Chinese</b>	<b>680</b>	<b>0.2</b>	<b>702</b>	<b>0.2</b>	<b>720</b>	<b>0.2</b>	<b>751</b>	<b>0.2</b>	<b>777</b>	<b>0.2</b>
<b>Any other ethnic group</b>	<b>4,145</b>	<b>1.1</b>	<b>4,451</b>	<b>1.1</b>	<b>4,639</b>	<b>1.2</b>	<b>5,006</b>	<b>1.3</b>	<b>5,180</b>	<b>1.3</b>
Total with valid category	390,123	99.4	390,139	99.4	390,781	99.5	392,447	99.5	394,620	99.5
Unknown or not stated	2,444	0.6	2,201	0.6	2,081	0.5	1,935	0.5	1,928	0.5
<b>All pupils</b>	<b>392,567</b>	<b>100.0</b>	<b>392,340</b>	<b>100.0</b>	<b>392,862</b>	<b>100.0</b>	<b>394,382</b>	<b>100.0</b>	<b>396,548</b>	<b>100.0</b>

Source: School Census

(a) Of all pupils aged 5 or over.

Please see these [guidance notes](#) for further information on categories and data collection methods.



## Special Educational Needs (SEN)

A child has special needs if he or she has learning difficulties which requires special educational provision to be made for him or her. A learning difficulty means that the child has significantly greater difficulty in learning than most children of the same age or that the child has a disability that needs different educational facilities from those that the school generally provides for children. Pupils with special educational needs may have Statements issued by the LA or may have their needs identified by the school. In the latter case they come under one of two further categories: School Action or School Action Plus.

- i. Pupils with statements - Pupils for whom the Authority maintains a statement of special educational needs under Part iv of the Education Act 1996. A statement may be issued by the LA after assessment of a child's needs.
- ii. School Action - When a class or subject teacher identify that a pupil has special educational needs they provide interventions that are additional to or different from those provided as part of the school's usual curriculum.
- iii. School Action Plus - When the class or subject teacher and the Special Educational Needs Co-ordinator are provided with advice or support from outside specialists, so that alternative interventions additional or different to those provided for the pupil through 'School Action' can be put in place. The Special Educational Needs Co-ordinator usually takes the lead although day-to-day provision continues to be the responsibility of class or subject teacher.

**From January 2017 maintained schools were allowed to report as many special educational needs for a pupil as required. These reports are not ranked and therefore have no SEN type that can be shown as a pupil's 'Major Need'. That means the data for SEN type shown in Table 14 are not directly comparable with school census results published before 2017.**

- There were 105,625 pupils with special educational needs in maintained schools (22.6 per cent of all pupils). [\(Table 13\)](#)
- 12.2 per cent of the pupils with special educational needs have Statements of SEN. [\(Table 13\)](#)
- There were 137,845 reports of SEN type made – an average of 1.3 per pupil with SEN. [\(Table 14\)](#)
- The most common type of need reported was 'General Learning Difficulties', representing 34.5 per cent of pupils with some form of SEN. [\(Table 14\)](#)
- The most common type of need reported for pupils with Statements of SEN was 'Autistic Spectrum Disorders', representing 32.9 per cent of pupils with Statements of SEN, followed by Speech, Language & Communication Difficulties (32.3 per cent). [\(Table 14\)](#)

**Table 13: Pupils with special educational needs (SEN) in maintained schools by type of SEN provision and local authority, January 2018**

	School Action			School Action Plus			Statement			Total		
	Number of pupils	Incidence (a)	Placement (b)	Number of pupils	Incidence (a)	Placement (b)	Number of pupils	Incidence (a)	Placement (b)	Number of pupils	Incidence (a)	Placement (b)
Isle of Anglesey	1,011	0.2	1.7	866	0.2	2.5	320	0.1	2.5	2,197	0.5	2.1
Gwynedd	1,785	0.4	3.1	1,638	0.4	4.7	502	0.1	3.9	3,925	0.8	3.7
Conwy	1,705	0.4	2.9	1,745	0.4	5.0	319	0.1	2.5	3,769	0.8	3.6
Denbighshire	1,648	0.4	2.8	1,903	0.4	5.5	426	0.1	3.3	3,977	0.9	3.8
Flintshire	2,846	0.6	4.9	1,283	0.3	3.7	547	0.1	4.2	4,676	1.0	4.4
Wrexham	2,084	0.4	3.6	1,102	0.2	3.2	607	0.1	4.7	3,793	0.8	3.6
Powys	1,890	0.4	3.3	1,087	0.2	3.1	388	0.1	3.0	3,365	0.7	3.2
Ceredigion	1,968	0.4	3.4	601	0.1	1.7	136	-	1.1	2,705	0.6	2.6
Pembrokeshire	2,561	0.5	4.4	1,351	0.3	3.9	379	0.1	2.9	4,291	0.9	4.1
Carmarthenshire	4,048	0.9	7.0	2,520	0.5	7.2	831	0.2	6.4	7,399	1.6	7.0
Swansea	5,413	1.2	9.3	2,392	0.5	6.9	1,471	0.3	11.4	9,276	2.0	8.8
Neath Port Talbot	2,929	0.6	5.1	1,547	0.3	4.4	862	0.2	6.7	5,338	1.1	5.1
Bridgend	2,910	0.6	5.0	1,335	0.3	3.8	379	0.1	2.9	4,624	1.0	4.4
The Vale of Glamorgan	2,072	0.4	3.6	1,179	0.3	3.4	363	0.1	2.8	3,614	0.8	3.4
Rhondda Cynon Taf	6,289	1.3	10.9	2,529	0.5	7.3	1,049	0.2	8.1	9,867	2.1	9.3
Merthyr Tydfil	1,451	0.3	2.5	870	0.2	2.5	263	0.1	2.0	2,584	0.6	2.4
Caerphilly	2,939	0.6	5.1	2,119	0.5	6.1	712	0.2	5.5	5,770	1.2	5.5
Blaenau Gwent	888	0.2	1.5	958	0.2	2.8	254	0.1	2.0	2,100	0.4	2.0
Torfaen	1,626	0.3	2.8	1,575	0.3	4.5	212	-	1.6	3,413	0.7	3.2
Monmouthshire	910	0.2	1.6	835	0.2	2.4	262	0.1	2.0	2,007	0.4	1.9
Newport	2,445	0.5	4.2	2,067	0.4	5.9	900	0.2	7.0	5,412	1.2	5.1
Cardiff	6,515	1.4	11.2	3,295	0.7	9.5	1,713	0.4	13.3	11,523	2.5	10.9
<b>Total</b>	<b>57,933</b>	<b>12.4</b>	<b>100.0</b>	<b>34,797</b>	<b>7.4</b>	<b>100.0</b>	<b>12,895</b>	<b>2.8</b>	<b>100.0</b>	<b>105,625</b>	<b>22.6</b>	<b>100.0</b>

Source: School Census

(a) Incidence - the number of pupils expressed as a proportion of the total number of pupils on roll in maintained schools.

(b) Placement - the number of pupils expressed as a proportion of the total number of pupils within each SEN grouping in maintained schools.

e.g. Number of pupils with a statement of SEN divided by the total number of pupils with a statement of SEN in maintained schools.

**Table 14: Reports of Special Educational Needs (SEN) in maintained schools by type of need and SEN provision, January 2018 (a) (b)**

SEN Type	Number of SEN Reports (c)				SEN Reports as a percentage of the pupils in each SEN provision (d)				SEN Reports as a percentage of all pupils on roll (e)			
	School				School				School			
	School Action	Action Plus	Statement	Total	School Action	Action Plus	Statement	All SEN	School Action	Action Plus	Statement	Total
Attention Deficit Hyperactivity Disorder	715	1,466	659	2,840	1.2	4.2	5.1	2.7	0.2	0.3	0.1	0.6
Autistic Spectrum Disorders	757	2,650	4,248	7,655	1.3	7.6	32.9	7.2	0.2	0.6	0.9	1.6
Behavioural, Emotional & Social Difficulties	10,443	11,211	2,763	24,417	18.0	32.2	21.4	23.1	2.2	2.4	0.6	5.2
Dyscalculia	399	233	21	653	0.7	0.7	0.2	0.6	0.1	-	-	0.1
Dyslexia	4,656	3,108	325	8,089	8.0	8.9	2.5	7.7	1.0	0.7	0.1	1.7
Dyspraxia	374	521	142	1,037	0.6	1.5	1.1	1.0	0.1	0.1	-	0.2
General Learning Difficulties	27,124	8,287	1,006	36,417	46.8	23.8	7.8	34.5	5.8	1.8	0.2	7.8
Hearing Impairment	798	1,712	612	3,122	1.4	4.9	4.7	3.0	0.2	0.4	0.1	0.7
Moderate Learning Difficulties	10,201	4,523	2,153	16,877	17.6	13.0	16.7	16.0	2.2	1.0	0.5	3.6
Multi-Sensory Impairment	20	53	105	178	-	0.2	0.8	0.2	-	-	-	-
Physical & Medical Difficulties	1,854	3,202	2,169	7,225	3.2	9.2	16.8	6.8	0.4	0.7	0.5	1.5
Profound & Multiple Learning Difficulties	26	144	685	855	-	0.4	5.3	0.8	-	-	0.1	0.2
Speech, Language & Communication Difficulties	8,710	11,288	4,169	24,167	15.0	32.4	32.3	22.9	1.9	2.4	0.9	5.2
Severe Learning Difficulties	62	492	2,291	2,845	0.1	1.4	17.8	2.7	-	0.1	0.5	0.6
Visual Impairment	310	706	452	1,468	0.5	2.0	3.5	1.4	0.1	0.2	0.1	0.3

Source: School Census

**(a) Please see Table 13 for the number and percentage of Pupils with SEN.**

(b) From January 2017 maintained schools were allowed to report as many types of special educational need for a pupil as required and the ranking of those needs was removed. The 'Major need' used in earlier publications no longer applies and therefore the figures are not directly comparable with previous years.

(c) The number of times each SEN type was reported e.g. if SEN types 'Dyslexia' and 'Dyspraxia' are reported for a pupil that pupil is counted twice, once under each type. The number of SEN reports will therefore be greater than the number of pupils with SEN.

(d) The number of reports for pupils in each SEN provision expressed as a proportion of the total number of pupils within that SEN provision.  
e.g. Number of SEN reports for pupils with a statement of SEN divided by the total number of pupils with a statement of SEN in maintained schools.

(e) The number of SEN reports for pupils expressed as a proportion of the total number of pupils on roll in maintained schools.

## Class sizes in primary and middle schools

Infant classes of more than 30 pupils are unlawfully large unless specific circumstances called 'exceptions' are satisfied.

### Infant ([Table 15](#))

- 8.1 per cent of pupils (8,695) were in infant classes of over 30 pupils, down from 8.2 per cent (8,794) in January 2017.
- 0.3 per cent of pupils (359) were in unlawfully large classes of over 30 pupils, down from 0.8 per cent (887) in January 2017.

**Table 15: Infant class sizes in primary and middle schools (a)**

	2016		2017		2018	
	Number	Per cent (b)	Number	Per cent (b)	Number	Per cent (b)
Average class size	25.6	.	25.6	.	25.6	.
All classes	4,233	.	4,206	.	4,177	.
All pupils	108,441	.	107,725	.	106,845	.
<u>Classes (30 pupils or less) (c)</u>						
Classes	3,978	94.0	3,930	93.4	3,903	93.4
Pupils	100,245	92.4	98,931	91.8	98,150	91.9
<u>Large Infant Classes (31 or more pupils) (d)</u>						
Classes	255	6.0	276	6.6	274	6.6
of which:						
Lawfully large classes						
with 'excepted' pupils (e)	241	5.7	249	5.9	263	6.3
Unlawfully large classes (f)	14	0.3	27	0.6	11	0.3
Pupils in large classes (g)	8,196	7.6	8,794	8.2	8,695	8.1
of which:						
Lawfully large classes						
with 'excepted' pupils (e)	7,706	7.1	7,907	7.3	8,336	7.8
Unlawfully large classes (f)	490	0.5	887	0.8	359	0.3

Source: School Census

(a) At January each year.

(b) Percentage of all classes/pupils.

(c) The Schools Standards and Framework Act 1998 and associated regulations placed a statutory duty on local authorities and governing bodies to limit the size of Reception classes to 30 from 1999; Reception and Year 1 classes from 2000 and Reception, Year 1 and Year 2 from 2001. Mixed year or mixed Key Stage classes are subject to the limit, where the majority of the class is made up of pupils in the appropriate year groups; this includes mixed nursery/reception classes. In this table, where a class has more than one teacher the number of pupils divided by the number of teachers determines if the size is over 30.

(d) Both infant and junior classes with one teacher are allowed to have more than 30 children in very specific circumstances. These are called exceptions. Exception categories for infant classes are defined in the Schedule to the Education (Infant Class Sizes) (Wales) Regulations 1998, as amended by the Education (Infant Class Sizes) (Wales) (Amendment) Regulations 2009. Exception categories for junior classes are not set out in regulations but are enforced as part of the data collection.

(e) Includes only those classes where there are pupils who have been admitted as exceptions making the class size within the legal limit of 30 pupils or less.

(f) Classes of 31 or more, excluding those large classes engaged in an excepted activity.

(g) Includes all pupils in large classes, including those with excepted activity.

## Junior (Table 16)

- 12.3 per cent of junior classes (662) were regarded as large classes and had a total of 21,237 pupils (15.1 per cent of all pupils). This is more than at January 2017 when 590 classes (11.1 per cent) were considered large and they had a total of 18,914 (13.7 per cent of all pupils).

**Table 16: Junior class sizes in primary and middle schools (a)**

	2016		2017		2018	
	Number	Per cent (b)	Number	Per cent (b)	Number	Per cent (b)
Average class size	25.6	.	25.9	.	26.1	.
All classes	5,319	.	5,331	.	5,379	.
All pupils	136,261	.	138,151	.	140,428	.
<u>Classes (30 pupils or less)</u>						
Classes	4,779	89.8	4,741	88.9	4,717	87.7
Pupils	118,982	87.3	119,237	86.3	119,191	84.9
<u>Large Junior Classes (31 or more pupils) (c)</u>						
Classes	540	10.2	590	11.1	662	12.3
of which:						
With 'excepted' pupils (d)	400	7.5	424	8.0	481	8.9
Without 'excepted' pupils (e)	140	2.6	166	3.1	181	3.4
Pupils in large classes (f)	17,279	12.7	18,914	13.7	21,237	15.1
of which:						
With 'excepted' pupils (d)	12,711	9.3	13,537	9.8	15,360	10.9
Without 'excepted' pupils (e)	4,568	3.4	5,377	3.9	5,877	4.2

Source: School Census

(a) At January each year.

(b) Percentage of all classes/pupils.

(c) Both infant and junior classes with one teacher are allowed to have more than 30 children in very specific circumstances. These are called exceptions. Exception categories for infant classes are defined in the Schedule to the Education (Infant Class Sizes) (Wales) Regulations 1998, as amended by the Education (Infant Class Sizes) (Wales) (Amendment) Regulations 2009. Exception categories for junior classes are not set out in regulations but are enforced as part of the data collection. In this table, where a class has more than one teacher the number of pupils divided by the number of teachers determines if the size is over 30.

(d) Includes only those classes where there are pupils who have been admitted as exceptions making the class size within the legal limit of 30 pupils or less.

(e) Classes of 31 or more, excluding those large classes engaged in an excepted activity.

(f) Includes all pupils in large classes, including those with excepted activity.

## Independent schools

Independent schools charge fees and may also be financed by individuals, companies or charitable institutions. All independent schools in Wales have to register with the Welsh Government.

- There were 70 independent schools in Wales in January 2018, unchanged from January 2017. ([Table 17](#))
- There were 9,756 pupils at independent schools in January 2018, 2 per cent of all pupils in Wales. ([Table 17](#))
- 16.2 per cent of pupils at independent schools have some form of special educational need; 32.7 per cent of these pupils with SEN have statements of SEN. Of the pupils with statements of special educational needs, 43.5 per cent had behavioural, emotional and social difficulties as their major need and 28.4 per cent of pupils had autistic spectrum disorders as their major need. ([Table 18](#))

**Table 17: Independent schools, January 2018**

	Schools	Pupils		Qualified Teachers		Pupil-Teacher Ratio
	Number	Number	Full-time equivalent	Number	Full-time equivalent	
Isle of Anglesey	2	133	109.5	16	13.3	8.2
Gwynedd	4	246	246.0	36	33.6	7.3
Conwy	2	539	539.0	108	92.1	5.9
Denbighshire	4	620	620.0	96	89.6	6.9
Flintshire	3	65	65.0	14	14.0	4.6
Wrexham	2	26	26.0	12	10.5	2.5
Powys	7	503	503.0	70	60.1	8.4
Ceredigion	0	.	.	.	.	.
Pembrokeshire	6	332	332.0	38	30.6	10.8
Carmarthenshire	4	789	789.0	108	100.6	7.8
Swansea	7	382	372.0	50	45.1	8.3
Neath Port Talbot	0	.	.	.	.	.
Bridgend	2	255	255.0	38	35.4	7.2
The Vale of Glamorgan	3	604	604.0	98	89.8	6.7
Rhondda Cynon Taf	0	.	.	.	.	.
Merthyr Tydfil	0	.	.	.	.	.
Caerphilly	2	148	148.0	18	14.3	10.4
Blaenau Gwent	0	.	.	.	.	.
Torfaen	0	.	.	.	.	.
Monmouthshire	5	1,472	1,460.5	209	188.6	7.7
Newport	2	535	529.5	69	63.3	8.4
Cardiff	15	3,107	3,107.0	372	324.7	9.6
<b>Wales</b>	<b>70</b>	<b>9,756</b>	<b>9,705.5</b>	<b>1,352</b>	<b>1,205.5</b>	<b>8.1</b>
Wales – January 2017	70	9,381	9,326.0	1,300	1,157.7	8.1
Wales – January 2016	66	8,880	8,805.5	1,285	1,106.2	8.0
Wales – January 2015	66	8,991	8,941.5	1,270	1,091.8	8.2
Wales – January 2014	70	8,603	8,524.0	1,260	1,084.0	7.9

Source: School Census

FTE of part-time teachers expresses the teachers' service in hours as a proportion of a school week: 26 hours for independent schools.

**Table 18: Pupils with special educational needs in independent schools by major need, January 2018**

	Number of pupils	Incidence % (a)
<b>Pupils with a statement of special educational need:</b>		
Attention Deficit Hyperactivity Disorder	14	0.1
Autistic Spectrum Disorders	147	1.5
Behavioural, Emotional & Social Difficulties	225	2.3
Dyscalculia	*	*
Dyslexia	27	0.3
Dyspraxia	*	*
General Learning Difficulties	11	0.1
Hearing Impairment	7	*
Moderate Learning Difficulties	17	0.2
Multi-Sensory Impairment	*	*
Physical & Medical Difficulties	9	0.1
Profound & Multiple Learning Difficulties	28	0.3
Speech, Language & Communications Difficulties	9	0.1
Severe Learning Difficulties	14	0.1
Visual Impairment	5	0.1
<b>Total</b>	<b>517</b>	<b>5.3</b>
Pupils with special educational needs but no statement	1,065	10.9

Source: School Census

(a) Incidence of pupils - the number of pupils expressed as a proportion of the total number of pupils on roll in Independent schools.

## Sickness absence of teachers

These figures are not collected as part of the School Census. This information is collected directly from the local authorities in January each year. The data covers the sickness absence (including unpaid absence) of qualified and unqualified teachers with permanent contracts or contracts of more than 1 month, during the previous calendar year.

- 61 per cent of teachers took sickness absence during 2017, compared to 63 per cent in 2016.
- The average annual number of sick-days per teacher taking sickness absence was 11 days in 2017, unchanged from 2016.
- The total number of sick-days taken by teachers during 2017 was 181,522 - this is over 7,600 days fewer than during 2016.

**Table 19: Sickness absence of teachers in maintained schools, 1 January - 31 December (a) (b)**

		2013	2014	2015	2016	2017
Teachers taking a period of sickness absence (c):						
Full-time teachers:	Number	13,779	13,986	13,729	13,821 (r)	13,326
	Percentage	61	63	63	65 (r)	63
Part-time teachers:	Number	2,955	3,150	3,102	3,186 (r)	3,203
	Percentage	53	56	55	55 (r)	56
Total teachers:	Number	16,734	17,136	16,831	17,007 (r)	16,529
	Percentage	59	62	61	63 (r)	61
Average number of days lost due to sickness:						
per full-time teacher taking a period of sick leave		10	10	11	11 (r)	11
<i>per teacher (all full-time teachers)</i>		6	7	7	7 (r)	7
Average number of days lost due to sickness:						
per part time teacher taking a period of sick leave		12	11	12	11 (r)	11
<i>per teacher (all part-time teachers)</i>		6	6	7	6 (r)	6
Average number of days lost due to sickness:						
per teacher taking a period of sick leave		11	11	11	11 (r)	11
<i>per teacher (all teachers)</i>		6	7	7	7 (r)	7
Sickness absences by duration (in days):						
Full-time teachers:	5 days or less	44,666	45,852	43,499	45,077 (r)	43,251
	6 to 20 days	23,692	24,257	22,962	21,767 (r)	21,085
	more than 20 days	72,960	76,106	84,097	87,463 (r)	82,636
	Total (full-time)	141,318	146,215	150,557	154,307 (r)	146,971
Part-time teachers:	5 days or less	8,962	9,228	8,102	8,435 (r)	8,180
	6 to 20 days	5,634	5,456	5,629	5,114 (r)	5,772
	more than 20 days	21,420	20,486	22,869	21,288 (r)	20,599
	Total (part-time)	36,016	35,170	36,601	34,837 (r)	34,551
<b>Total</b>		<b>177,334</b>	<b>181,385</b>	<b>187,157</b>	<b>189,144 (r)</b>	<b>181,522</b>

Source: Local Authorities

(a) Sickness absence (including unpaid absence) of qualified and unqualified teachers with permanent contracts or contracts of more than 1 month.

(b) 2014 was the first year teacher numbers were not collected from the STATS3 return. The percentage of teachers taking a period of sickness absence has been calculated using PLASC data.

Percentages in previous years have also been recalculated using PLASC data, including trainees on initial training courses. Link to previous data is attached:

[Teachers in service, vacancies and sickness absence.](#)

(c) Headcount, not full time equivalents.

(r) Figure revised July 2018.



## **Key quality information**

### **Coverage and data sources**

The census data in this release relates to all maintained and independent schools in Wales. The teacher sickness absence data relates to all maintained schools only.

### **Pupil Level Annual School Census (PLASC) / School Census (STATS1 Return)**

Schools' data are derived from the Pupil Level Annual School Census returns and STATS 1 returns supplied by schools open on Census day in January each year. The returns are authorised by headteachers and validated by Local Authorities. The teacher sickness absence data is collected directly from the local authorities in January each year.

PLASC is an electronic collection of pupil and school level data provided by all maintained schools in January each year. Schools record data on pupils and the school throughout the year in their Management Information System (MIS) software. This data is collated into an electronic PLASC return and submitted to the Welsh Government through DEWI, a secure online data transfer system developed by the Welsh Government. Various stages of automated validation and sense-checking are built into the process to ensure a high quality of data to inform policy making and funding.

Independent schools in Wales complete an aggregate STATS1 return.

### **Teacher sickness absence annual returns**

Schools provide sickness absence data to Local Authorities, which collate the data for the Welsh Government collection. Local Authorities carry out their own validation, and are given the chance to review data submitted for the previous year. In built validations in the data collection form compare the new and previous year's data, which highlights any significant changes and provides further opportunity for data validation.

Many Local Authorities report system developments that have allowed this data to be captured more accurately and timely than in previous years. This has increased the quality of the data provided and sometimes results in revisions being made to previous years' data.

### **Timeliness**

The census data in this release relate to the position on Tuesday 16 January 2018. The teacher sickness absence data relates to the preceding calendar year.

### **Revisions**

Data for 2016 have been revised in this publication. Where data has been revised it will be clearly marked with an (r).

We follow our [statistical revisions policy](#).

**Rounding:** In tables where figures have been rounded to the nearest final digit there may be an apparent discrepancy between the sum of the constituent items and the total as shown.

**Symbols:** The following symbols have been used throughout the publication:

- .. not available
- . not applicable
- the data item is not exactly zero but less than 0.05
- \* figure is less than 5, or is based on a figure less than 5.

**Comparability: Other countries' releases**

Here is the latest available data for:

**England**

[Statistics-school-and-pupil-numbers](#)

[Statistics-education-and-training-UK](#)

**Scotland**

[Education statistics](#)

**Northern Ireland**

[Education statistics](#)

**Related data for Wales**

This release shows final data at Wales level for 2014 - 2018.

The previous census data published were for 2017, in the form of a Statistical First Release:

[School Census Results, 2017](#), published on 26 July 2017.

## **Who are the key users of this data?**

These statistics are used both within and outside the Welsh Government. Some of the key users are:

- Ministers and the Members Research Service in the National Assembly for Wales
- Education policy in the Welsh Government
- Other areas of the Welsh Government
- Estyn
- The research community
- Students, academics and universities
- Individual citizens and private companies.

## **What are the data used for?**

These statistics are used in a variety of ways. Some examples of these are:

- resource allocation in the Welsh Local Government Finance Settlement and the Pupil Development Grant
- advice to Ministers
- the all-Wales education core data packs
- to inform the education policy decision-making process in Wales including school reorganisation
- to inform ESTYN during school inspections
- the education domain of the Welsh Index of Multiple Deprivation
- as a basis for National School Categorisation
- published on My Local School
- to assist in research in educational attainment.

## Definitions

**LA maintained schools:** schools maintained by the local authorities. The authorities meet their expenditure partly from council tax and partly from general grants made by the Welsh Government.

**Welsh medium schools:** for further information please see these [guidance notes](#).

**Independent schools:** schools which charge fees and may also be financed by individuals, companies or charitable institutions.

**Nursery schools:** age under 5.

**Primary schools:** ages 3/4 to 10.

**Middle schools:** ages 3/4 to 16/18.

**Secondary schools:** ages 11 to 16/18.

**Special schools:** Special schools, both day and boarding, provide education for children with SEN who cannot be educated satisfactorily in mainstream schools.

### **Full-time equivalent (FTE):**

- FTE pupil numbers count part-time pupils as 0.5.
- FTE of part-time teachers expresses the teachers' service in hours as a proportion of a school week: 32.5 hours for maintained schools and 26 hours for independent schools.

**Pupil Teacher Ratio (PTR):** calculated by dividing the FTE number of pupils by the FTE number of qualified teachers (head teachers, acting head teachers, assistant head teachers, deputy heads and other qualified teachers).

## **National Statistics status**

The [United Kingdom Statistics Authority](#) has designated these statistics as National Statistics, in accordance with the Statistics and Registration Service Act 2007 and signifying compliance with the [Code of Practice for Statistics](#).

National Statistics status means that official statistics meet the highest standards of trustworthiness, quality and public value.

All official statistics should comply with all aspects of the Code of Practice for Statistics. They are awarded National Statistics status following an assessment by the UK Statistics Authority's regulatory arm. The Authority considers whether the statistics meet the highest standards of Code compliance, including the value they add to public decisions and debate.

It is Welsh Government's responsibility to maintain compliance with the standards expected of National Statistics. If we become concerned about whether these statistics are still meeting the appropriate standards, we will discuss any concerns with the Authority promptly. National Statistics status can be removed at any point when the highest standards are not maintained, and reinstated when standards are restored.

## **Well-being of Future Generations Act (WFG)**

The Well-being of Future Generations Act 2015 is about improving the social, economic, environmental and cultural well-being of Wales. The Act puts in place seven well-being goals for Wales. These are for a more equal, prosperous, resilient, healthier and globally responsible Wales, with cohesive communities and a vibrant culture and thriving Welsh language. Under section (10)(1) of the Act, the Welsh Ministers must (a) publish indicators ("national indicators") that must be applied for the purpose of measuring progress towards the achievement of the Well-being goals, and (b) lay a copy of the national indicators before the National Assembly. The 46 national indicators were laid in March 2016.

Information on the indicators, along with narratives for each of the well-being goals and associated technical information is available in the [Well-being of Wales report](#).

Further information on the [Well-being of Future Generations \(Wales\) Act 2015](#).

The statistics included in this release could also provide supporting narrative to the national indicators and be used by public services boards in relation to their local well-being assessments and local well-being plans.

## **Further details**

The document is available at:

<http://gov.wales/statistics-and-research/schools-census/?lang=en>

Further data underlying the tables in this release are available through [StatsWales](#).

## **Next update**

July 2019 (provisional)

Period covered: The census data will relate to the position on Tuesday 15 January 2019. The teacher sickness absence data will relate to the preceding calendar year.

## **We want your feedback**

We welcome any feedback on any aspect of these statistics which can be provided by email to [school.stats@gov.wales](mailto:school.stats@gov.wales)

## **Open Government Licence**

All content is available under the [Open Government Licence v3.0](#), except where otherwise stated.

