


SDR 87/2016

27 July 2016

School Census Results, 2016

This Statistical First Release is primarily based upon information collected by the Schools' Census in January 2016. It reports information for the number of pupils by age, gender, free school meal eligibility, ethnicity and special educational needs, together with information on the number of schools, teachers and support staff.

The tables provide all Wales information for each category listed, plus a breakdown to local authority (LA) level for schools, pupils, teachers and support staff.

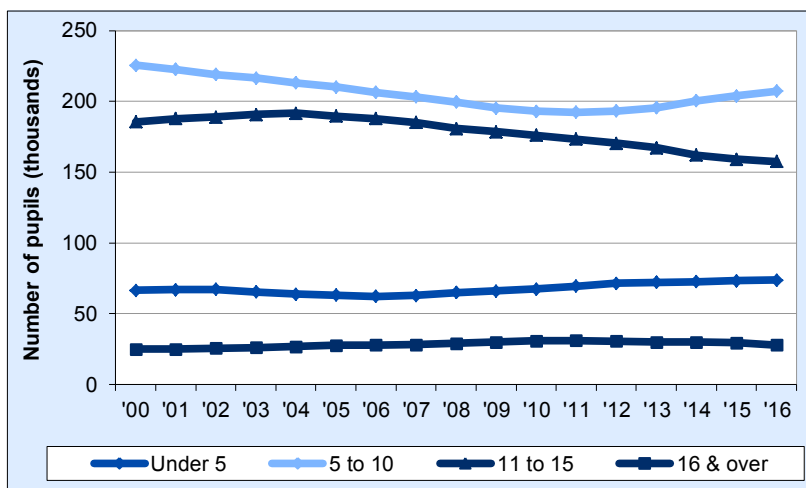
Further data underlying the tables in this release are available through 

Key results from the January 2016 school census

Schools and pupils (Tables 1-6)

- In January 2016 there were 13 nursery, 1,310 primary, 7 middle schools, 205 secondary schools and 39 special schools. Of these, 428 primary, 5 middle and 49 secondary schools were classified as Welsh medium. There was no change in the number of independent schools (66). Overall, there were 21 fewer LA maintained schools than at January 2015.
- The total number of pupils (headcount) in LA maintained nursery, primary, middle, secondary and special schools was 466,555, a rise of 851 pupils since January 2015.

Chart 1: Number of pupils, by age group, in maintained schools



- The numbers of pupils aged under 5 have been increasing since 2006 to reach 73,693 in 2016.
- The numbers of pupils aged 5 to 10 have increased to 207,328 in 2016 compared to 203,847 in 2015. Prior to 2011, they had been decreasing year on year since 2000.
- The numbers of pupils aged 11 to 15 increased from 2000 to 2004 and have decreased year on year since then.

Statistician: Stephen Hughes
Next update: July 2017 (provisional)

Tel: 0300 025 5060
Twitter: www.twitter.com/statisticswales | www.twitter.com/ystadegaucymru
E-mail: school.stats@wales.gsi.gov.uk

Cyhoeddwyd gan Y Gwasanaethau Gwybodaeth a Dadansoddi
 Llywodraeth Cymru, Parc Cathays, Caerdydd, CF10 3NQ
 Ffôn – Swyddfa'r Wasg **029 2089 8099**, Ymholiadau Cyhoeddus **029 2082 5050**
www.llyw.cymru/ystadegau

Issued by Knowledge and Analytical Services
 Welsh Government, Cathays Park, Cardiff, CF10 3NQ
 Telephone – Press Office **029 2089 8099**, Public Enquiries **029 2082 5050**
www.gov.wales/statistics



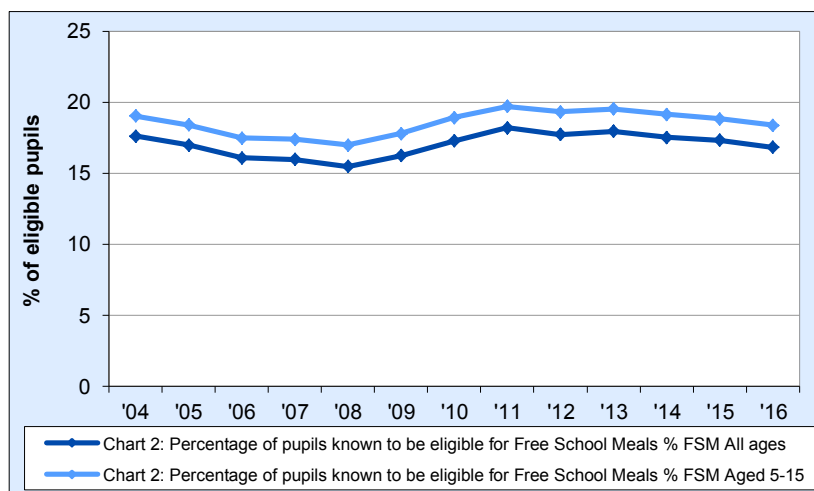
Llywodraeth Cymru
 Welsh Government

Teachers and support staff (Tables 7-10)

- There were 24,235.8 full-time equivalent (FTE) qualified teachers in LA maintained schools, 275.0 fewer than at January 2015.
- The pupil teacher ratio for all LA maintained schools was 18.6, up from 18.4 in January 2015.
- There were 23,994.9 support staff (FTE) in LA maintained schools, 446.1 fewer than at January 2015.

Free school meals (Table 11)

Chart 2: Percentage of pupils known to be eligible for free school meals



- The percentage of pupils known to be eligible for free school meals in primary, middle, secondary and special schools has fluctuated over the last decade, generally decreasing from 2004 to 2008 and then increasing year on year to 2011. There has been a decrease between 2013 and 2016.

- The percentage of pupils of compulsory school age in LA maintained schools known to be eligible for free school meals in 2016 was 18.4 per cent – down from 18.8 per cent in 2015.

Ethnicity (Table 12)

- In LA maintained schools 89.4 per cent of pupils (aged 5 and over) were classified as White British, 10.1 per cent were of minority ethnic origin and 0.5 per cent were unknown or not stated.

Pupils with Special Educational Needs (SEN) (Tables 13-16)

- In January 2016 12,434 pupils in maintained schools had statements of SEN, 3 fewer than in January 2015.
- In maintained schools, 2.7 per cent of pupils had statements of SEN and a further 19.9 per cent of pupils had special educational needs but no statement.
- In the **Independent** sector 4.6 per cent of pupils had statements of SEN and a further 9.2 per cent of pupils had special needs but no statement.

Class size (Tables 17 & 18)

- 7.6 per cent of pupils (8,196) were in infant classes of over 30 pupils, up from 7.3 per cent in January 2015.

Sickness Absence of Teachers (Table 19)

- 61 per cent of teachers took sickness absence during 2015, compared with 62 per cent during 2014.

• Contents

	Page
<u>Schools and Pupils</u>	
Table 1	Number of schools, by local authority, January 2016 4
Table 2	Welsh medium schools and pupils, by local authority, January 2016 5
Table 3	Number of pupils, by age group, in maintained schools 5
Table 4	Number of pupils, full-time and part-time, by age and sex, in maintained schools, January 2016 6
Table 5	Pupil numbers, by local authority, January 2016 7
Table 6	Full-time equivalent pupils, by local authority, January 2016 7
<u>Teachers and support staff</u>	
Table 7	Number of qualified teachers, by local authority, January 2016 8
Table 8	Full-time equivalent qualified teachers, by local authority, January 2016 9
Table 9	Pupil teacher ratios within schools, by local authority, January 2016 9
Table 10	Full-time equivalent support staff, by local authority, January 2016 10
<u>Free school meals</u>	
Table 11	Pupils known to be eligible for free meals in maintained schools 11
<u>Ethnicity</u>	
Table 12	Number of pupils aged 5 or over, by ethnic background, January 2016 12
<u>Pupils with Special Educational Needs (SEN)</u>	
Table 13	Pupils with a statement of special educational needs in maintained schools, by type of school and major need, January 2012-2016 13
Table 14	Pupils with a special educational need but no statement, in maintained schools, by type of school and major need, January 2012-2016 14
Table 15	All pupils with special educational needs in maintained schools, by type of school and major need, January 2012-2016 15
Table 16	Pupils with special educational needs in independent schools, by major need, January 2016 16
<u>Class Size</u>	
Table 17	Infant class sizes in primary and middle schools 17
Table 18	Junior class sizes in primary and middle schools 18
<u>Sickness Absence of Teachers</u>	
Table 19	Sickness absence of teachers in maintained schools, 1 January - 31 December 19
Key Quality Information	20

Schools and Pupils

- The local authority with the most **schools** was Cardiff with 138, and the local authorities with the fewest were Blaenau Gwent and Merthyr Tydfil, both with 28 schools. ([Table 1](#))
- Gwynedd had the most **Welsh medium schools** with 105, and the local authority with the fewest was Blaenau Gwent with 1 school. ([Table 2](#))
- Of the **pupils aged under 5** in maintained schools in Wales, the majority of them were attending school on a full time basis. ([Table 4](#))
- From 2000 to 2010, the total **number of pupils in primary schools** in Wales had decreased year-on-year, but there have been increases each year from January 2011, representing the first increase in the sector since 1998. ([Table 3](#))
- The **number of pupils** in each local authority ranged between 8,749 in Merthyr Tydfil, to 56,491 in Cardiff. ([Table 5](#))
- The number of **full-time equivalent pupils in schools** was highest in Cardiff at 54,150.0pupils and lowest in Merthyr Tydfil at 8,582.5 pupils. ([Table 6](#))
- The numbers of pupils aged 5 and under have been increasing since 2006 while those of pupils aged 5-10 have been increasing since 2011. The increase in pupil numbers of these two age groups explain the recent increase of overall pupil numbers in Wales, reversing the long term downward trend.

Table 1: Number of schools, by local authority, January 2016

	Maintained schools						Independent	All schools
	Nursery	Primary	Middle	Secondary	Special	Total		
Isle of Anglesey	0	47	0	5	1	53	2	55
Gwynedd	0	93	0	14	2	109	4	113
Conwy	0	55	0	7	1	63	2	65
Denbighshire	0	46	1	7	2	56	4	60
Flintshire	0	67	0	12	2	81	3	84
Wrexham	1	59	0	9	1	70	2	72
Powys	0	83	1	11	3	98	6	104
Ceredigion	0	47	2	5	0	54	0	54
Pembrokeshire	0	61	0	8	1	70	5	75
Carmarthenshire	1	101	0	12	2	116	7	123
Swansea	0	79	0	14	2	95	5	100
Neath Port Talbot	0	58	0	11	2	71	0	71
Bridgend	0	48	0	9	2	59	2	61
The Vale of Glamorgan	3	45	1	7	1	57	3	60
Rhondda Cynon Taf	1	104	1	16	4	126	1	127
Merthyr Tydfil	1	22	0	4	1	28	0	28
Caerphilly	0	75	0	14	1	90	1	91
Blaenau Gwent	0	23	1	3	1	28	0	28
Torfaen	1	26	0	6	1	34	0	34
Monmouthshire	0	30	0	4	1	35	5	40
Newport	2	44	0	8	1	55	2	57
Cardiff	3	97	0	19	7	126	12	138
Wales	13	1,310	7	205	39	1,574	66	1,640
Wales – January 2015	13	1,330	6	207	39	1,595	66	1,661
Wales – January 2014	17	1,357	4	213	42	1,633	70	1,703
Wales – January 2013	20	1,374	4	216	42	1,656	68	1,724
Wales – January 2012	22	1,412	.	221	43	1,698	66	1,764

Source: School Census

Table 2: Welsh medium schools and pupils, by local authority, January 2016

	Primary (a)		Middle (b)		Secondary (b)	
	Schools	Pupils	Schools	Pupils	Schools	Pupils
Isle of Anglesey	46	5,571	0	0	4	2,959
Gwynedd	92	9,966	0	0	13	5,585
Conwy	23	2,288	0	0	2	1,292
Denbighshire	16	2,322	0	0	3	2,966
Flintshire	5	898	0	0	1	495
Wrexham	8	1,705	0	0	1	745
Powys	22	2,803	1	520	3	1,880
Ceredigion	41	3,540	2	1,404	4	2,211
Pembrokeshire	19	3,009	0	0	1	902
Carmarthenshire	71	9,805	0	0	5	5,502
Swansea	11	3,223	0	0	2	1,598
Neath Port Talbot	10	2,176	0	0	1	1,046
Bridgend	4	1,151	0	0	1	617
The Vale of Glamorgan	6	1,634	1	1,016	0	0
Rhondda Cynon Taf	16	4,786	1	519	3	2,512
Merthyr Tydfil	2	711	0	0	0	0
Caerphilly	11	2,927	0	0	1	1,499
Blaenau Gwent	1	266	0	0	0	0
Torfaen	3	920	0	0	1	965
Monmouthshire	2	366	0	0	0	0
Newport	3	686	0	0	0	0
Cardiff	16	5,348	0	0	3	2,625
Wales	428	66,101	5	3,459	49	35,399
Wales – January 2015	435	65,460	4	2,448	50	36,485
Wales – January 2014	444	64,366	2	1,577	52	37,400
Wales – January 2013	452	63,192	2	1,634	53	37,692
Wales – January 2012	461	62,446	.	.	56	41,262

Source: School Census

(a) Primary schools include Welsh Medium, Dual Stream and Transitional schools.

(b) Includes Welsh Medium and Bilingual schools.

Table 3: Number of pupils, by age group in maintained schools, January 2012-2016 (a)

		2012	2013	2014	2015	2016
Nursery	Under 5	1,530	1,434	1,353	1,076	1,019
	5 and over	0	0	0	0	0
	All ages	1,530	1,434	1,353	1,076	1,019
Primary	Under 5	69,766	70,262	70,655	71,713	72,014
	5 to 10	192,293	193,878	198,726	201,649	204,923
	11 to 15	76	44	39	37	17
	16 and over	9	2	1	1	0
	All ages	262,144	264,186	269,421	273,400	276,954
Middle	Under 5	.	238	268	330	415
	5 to 10	.	621	660	970	1,104
	11 to 15	.	2,343	2,278	2,695	3,337
	16 and over	.	446	336	381	515
	All ages	.	3,648	3,542	4,376	5,371
Secondary	5 to 10	19	2	9	3	4
	11 to 15	168,204	162,843	157,831	154,442	152,280
	16 and over	29,792	28,434	28,587	27,963	26,385
	All ages	198,015	191,279	186,427	182,408	178,669
Special	Under 5	213	224	238	245	245
	5 to 10	1,062	1,103	1,185	1,225	1,297
	11 to 15	2,111	2,070	1,933	1,979	2,001
	16 and over	868	924	982	995	999
	All ages	4,254	4,321	4,338	4,444	4,542
Total	Under 5	71,509	72,158	72,514	73,364	73,693
	5 to 10	193,374	195,604	200,580	203,847	207,328
	11 to 15	170,391	167,300	162,081	159,153	157,635
	16 and over	30,669	29,806	29,906	29,340	27,899
	All ages	465,943	464,868	465,081	465,704	466,555

Source: School Census

(a) At January each year. Age as at 31 August in the previous year.

Table 4: Number of pupils, full-time and part-time, by age and sex, in maintained schools, January 2016 (a)

	2 and under	3	4	5	6	7	8	9	10	11	12	13	14	15	16	17	18	19+	All ages
Nursery:																			
Full-time Boys	24	66	1	0	0	0	0	0	0	0	0	0	0	0	0	0	0	0	91
Girls	10	66	0	0	0	0	0	0	0	0	0	0	0	0	0	0	0	0	76
Part-time Boys	112	346	0	0	0	0	0	0	0	0	0	0	0	0	0	0	0	0	458
Girls	98	296	0	0	0	0	0	0	0	0	0	0	0	0	0	0	0	0	394
Total	244	774	1	0	0	0	0	0	0	0	0	0	0	0	0	0	0	0	1,019
Primary:																			
Full-time Boys	198	3,689	18,137	17,997	17,649	18,034	17,293	16,945	16,758	13	1	0	0	0	0	0	0	0	126,714
Girls	224	3,673	17,415	17,130	16,889	17,349	16,593	16,217	16,069	3	0	0	0	0	0	0	0	0	121,562
Part-time Boys	2,592	11,996	8	0	0	0	0	0	0	0	0	0	0	0	0	0	0	0	14,596
Girls	2,592	11,485	5	0	0	0	0	0	0	0	0	0	0	0	0	0	0	0	14,082
Total	5,606	30,843	35,565	35,127	34,538	35,383	33,886	33,162	32,827	16	1	0	0	0	0	0	0	0	276,954
Middle:																			
Full-time Boys	0	18	96	86	105	105	84	82	86	312	380	314	313	330	105	88	11	0	2,515
Girls	0	17	102	96	109	82	96	91	82	388	324	320	328	328	169	135	7	0	2,674
Part-time Boys	29	76	1	0	0	0	0	0	0	0	0	0	0	0	0	0	0	0	106
Girls	16	60	0	0	0	0	0	0	0	0	0	0	0	0	0	0	0	0	76
Total	45	171	199	182	214	187	180	173	168	700	704	634	641	658	274	223	18	0	5,371
Secondary:																			
Full-time Boys	0	0	0	0	0	0	0	0	1	15,868	15,554	15,206	15,639	15,566	6,468	5,180	629	12	90,123
Girls	0	0	0	0	0	0	0	0	3	15,101	14,964	14,479	14,905	14,998	7,268	6,285	504	39	88,546
Part-time Boys	0	0	0	0	0	0	0	0	0	0	0	0	0	0	0	0	0	0	0
Girls	0	0	0	0	0	0	0	0	0	0	0	0	0	0	0	0	0	0	0
Total	0	0	0	0	0	0	0	0	4	30,969	30,518	29,685	30,544	30,564	13,736	11,465	1,133	51	178,669
Special:																			
Full-time Boys	5	32	113	144	155	177	162	164	171	282	276	284	272	311	240	233	212	0	3,233
Girls	4	18	39	38	40	64	46	64	72	109	119	125	120	103	127	96	91	0	1,275
Part-time Boys	0	23	0	0	0	0	0	0	0	0	0	0	0	0	0	0	0	0	23
Girls	0	11	0	0	0	0	0	0	0	0	0	0	0	0	0	0	0	0	11
Total	9	84	152	182	195	241	208	228	243	391	395	409	392	414	367	329	303	0	4,542
Total	5,904	31,872	35,917	35,491	34,947	35,811	34,274	33,563	33,242	32,076	31,618	30,728	31,577	31,636	14,377	12,017	1,454	51	466,555

Source: School Census
(a) Age as at 31 August 2015

Table 5: Pupil numbers, by local authority, January 2016

	Nursery	Primary	Middle	Secondary	Special	Total	Independent	All schools
Isle of Anglesey	0	5,763	0	3,814	88	9,665	127	9,792
Gwynedd	0	10,082	0	6,789	168	17,039	327	17,366
Conwy	0	9,028	0	6,680	208	15,916	586	16,502
Denbighshire	0	8,614	518	6,269	254	15,655	416	16,071
Flintshire	0	13,936	0	9,507	206	23,649	29	23,678
Wrexham	36	13,106	0	6,223	311	19,676	32	19,708
Powys	0	10,008	520	7,177	292	17,997	503	18,500
Ceredigion	0	4,652	1,404	3,483	0	9,539	0	9,539
Pembrokeshire	0	10,730	0	6,840	146	17,716	311	18,027
Carmarthenshire	80	15,792	0	11,119	117	27,108	437	27,545
Swansea	0	22,167	0	13,475	176	35,818	388	36,206
Neath Port Talbot	0	12,767	0	7,759	225	20,751	0	20,751
Bridgend	0	13,356	0	9,240	336	22,932	294	23,226
The Vale of Glamorgan	255	12,575	1,016	8,104	234	22,184	565	22,749
Rhondda Cynon Taf	31	22,441	519	15,286	531	38,808	0	38,808
Merthyr Tydfil	76	5,687	0	2,818	168	8,749	0	8,749
Caerphilly	0	17,254	0	11,145	133	28,532	131	28,663
Blaenau Gwent	0	5,887	1,394	1,936	101	9,318	0	9,318
Torfaen	52	8,601	0	6,259	101	15,013	0	15,013
Monmouthshire	0	6,706	0	4,801	40	11,547	1,435	12,982
Newport	174	14,716	0	10,124	155	25,169	582	25,751
Cardiff	315	33,086	0	19,821	552	53,774	2,717	56,491
Wales	1,019	276,954	5,371	178,669	4,542	466,555	8,880	475,435
Wales – January 2015	1,076	273,400	4,376	182,408	4,444	465,704	8,991	474,695
Wales – January 2014	1,353	269,421	3,542	186,427	4,338	465,081	8,603	473,684
Wales – January 2013	1,434	264,186	3,648	191,279	4,321	464,868	8,862	473,730
Wales – January 2012	1,530	262,144	.	198,015	4,254	465,943	8,929	474,872

Source: School Census

Table 6: Full-time equivalent pupils, by local authority, January 2016

	Nursery	Primary	Middle	Secondary	Special	Total	Independent	All schools
Isle of Anglesey	0.0	5,422.5	0.0	3,814.0	88.0	9,324.5	102.0	9,426.5
Gwynedd	0.0	9,462.0	0.0	6,789.0	168.0	16,419.0	327.0	16,746.0
Conwy	0.0	8,470.0	0.0	6,680.0	206.0	15,356.0	586.0	15,942.0
Denbighshire	0.0	8,103.0	512.5	6,269.0	254.0	15,138.5	416.0	15,554.5
Flintshire	0.0	13,082.0	0.0	9,507.0	202.5	22,791.5	29.0	22,820.5
Wrexham	18.5	12,264.5	0.0	6,223.0	311.0	18,817.0	32.0	18,849.0
Powys	0.0	9,848.5	520.0	7,177.0	292.0	17,837.5	503.0	18,340.5
Ceredigion	0.0	4,506.0	1,374.5	3,483.0	0.0	9,363.5	0.0	9,363.5
Pembrokeshire	0.0	10,186.0	0.0	6,840.0	146.0	17,172.0	311.0	17,483.0
Carmarthenshire	80.0	15,593.0	0.0	11,119.0	117.0	26,909.0	437.0	27,346.0
Swansea	0.0	20,408.0	0.0	13,475.0	174.0	34,057.0	375.5	34,432.5
Neath Port Talbot	0.0	11,790.0	0.0	7,759.0	224.5	19,773.5	0.0	19,773.5
Bridgend	0.0	13,190.5	0.0	9,240.0	331.5	22,762.0	294.0	23,056.0
The Vale of Glamorgan	127.5	11,808.0	993.0	8,104.0	234.0	21,266.5	564.0	21,830.5
Rhondda Cynon Taf	31.0	22,051.5	506.0	15,286.0	531.0	38,405.5	0.0	38,405.5
Merthyr Tydfil	64.0	5,532.5	0.0	2,818.0	168.0	8,582.5	0.0	8,582.5
Caerphilly	0.0	16,089.5	0.0	11,145.0	133.0	27,367.5	131.0	27,498.5
Blaenau Gwent	0.0	5,440.5	1,374.0	1,936.0	101.0	8,851.5	0.0	8,851.5
Torfaen	27.5	8,099.0	0.0	6,259.0	101.0	14,486.5	0.0	14,486.5
Monmouthshire	0.0	6,470.5	0.0	4,801.0	40.0	11,311.5	1,415.5	12,727.0
Newport	87.0	13,878.5	0.0	10,124.0	155.0	24,244.5	577.5	24,822.0
Cardiff	157.5	30,919.0	0.0	19,821.0	547.5	51,445.0	2,705.0	54,150.0
Wales	593.0	262,615.0	5,280.0	178,669.0	4,525.0	451,682.0	8,805.5	460,487.5
Wales – January 2015	633.0	259,476.0	4,323.0	182,408.0	4,418.5	451,258.5	8,941.5	460,200.0
Wales – January 2014	785.0	255,691.5	3,496.5	186,426.5	4,311.5	450,711.0	8,524.0	459,235.0
Wales – January 2013	877.5	250,828.5	3,603.0	191,279.0	4,295.0	450,883.0	8,755.5	459,638.5
Wales – January 2012	965.5	248,587.5	.	198,015.0	4,222.0	451,790.0	8,828.5	460,618.5

Source: School Census

Teachers and support staff

- The **number of teachers** in maintained schools in each local authority ranged between 3,044 in Cardiff, to 485 in Merthyr Tydfil. ([Table 7](#))
- The number of **full-time equivalent qualified teachers in maintained schools** was highest in Cardiff at 2,765.9 teachers and lowest in Merthyr Tydfil at 461.9 teachers. ([Table 8](#))
- Ceredigion had the lowest primary **pupil teacher ratio** at 18.5, and Rhondda Cynon Taf had the highest at 24.5. The lowest secondary pupil teacher ratio was in Gwynedd and Conwy at 15.2, and the highest was in Swansea at 17.0. ([Table 9](#))
- The **pupil teacher ratio** is highest in primary schools at 21.6 and lowest in special schools at 6.5. ([Table 9](#))
- The number of **full-time equivalent support staff in maintained schools** was highest in Cardiff at 2,720.7 support staff, and lowest in Merthyr Tydfil at 433.1 support staff. ([Table 10](#))

Table 7: Number of qualified teachers, by local authority, January 2016

	Nursery	Primary	Middle	Secondary	Special	Total	Independent	All schools
Isle of Anglesey	0	300	0	254	14	568	15	583
Gwynedd	0	536	0	487	25	1,048	52	1,100
Conwy	0	483	0	467	27	977	115	1,092
Denbighshire	0	446	38	415	39	938	55	993
Flintshire	0	683	0	649	31	1,363	7	1,370
Wrexham	3	681	0	413	31	1,128	15	1,143
Powys	0	576	37	483	47	1,143	65	1,208
Ceredigion	0	297	103	235	0	635	0	635
Pembrokeshire	0	555	0	438	25	1,018	42	1,060
Carmarthenshire	4	861	0	740	25	1,630	70	1,700
Swansea	0	1019	0	846	30	1,895	60	1,955
Neath Port Talbot	0	584	0	514	39	1,137	0	1,137
Bridgend	0	621	0	605	52	1,278	40	1,318
The Vale of Glamorgan	8	632	70	530	52	1,292	101	1,393
Rhondda Cynon Taf	4	960	34	962	66	2,026	1	2,027
Merthyr Tydfil	3	277	0	183	22	485	0	485
Caerphilly	0	774	0	735	29	1,538	17	1,555
Blaenau Gwent	0	284	91	124	24	523	0	523
Torfaen	2	361	0	393	14	770	0	770
Monmouthshire	0	336	0	306	11	653	218	871
Newport	5	691	0	636	32	1,364	66	1,430
Cardiff	19	1601	0	1312	112	3,044	346	3,390
Wales	48	13,558	373	11,727	747	26,453	1,285	27,738
Wales – January 2015	48	13,624	317	12,047	719	26,755	1,270	28,025
Wales – January 2014	59	13,670	236	12,378	721	27,064	1,260	28,324
Wales – January 2013	67	13,533	239	12,519	698	27,056	1,271	28,327
Wales – January 2012	73	13,451	.	12,651	694	26,869	1,284	28,153

Source: School Census

Table 8: Full-time equivalent qualified teachers, by local authority, January 2016

	<i>FTE</i>							
	Nursery	Primary	Middle	Secondary	Special	Total	Independent	All schools
Isle of Anglesey	0.0	275.1	0.0	235.0	13.0	523.2	11.4	534.5
Gwynedd	0.0	469.3	0.0	446.7	23.0	939.1	45.0	984.0
Conwy	0.0	424.7	0.0	438.3	25.9	888.9	103.8	992.8
Denbighshire	0.0	383.9	30.9	377.1	34.7	826.6	52.0	878.6
Flintshire	0.0	618.2	0.0	591.2	29.1	1,238.5	6.0	1,244.5
Wrexham	2.4	579.8	0.0	390.6	29.2	1,002.0	13.5	1,015.5
Powys	0.0	489.4	35.0	443.9	41.6	1,009.9	56.9	1,066.8
Ceredigion	0.0	243.8	92.3	214.0	0.0	550.1	0.0	550.1
Pembrokeshire	0.0	481.9	0.0	406.6	22.6	911.1	34.5	945.6
Carmarthenshire	4.0	783.7	0.0	687.1	24.4	1,499.3	52.4	1,551.6
Swansea	0.0	905.4	0.0	791.8	27.2	1,724.4	45.2	1,769.6
Neath Port Talbot	0.0	532.9	0.0	495.0	38.2	1,066.1	0.0	1,066.1
Bridgend	0.0	582.5	0.0	569.2	49.8	1,201.4	37.7	1,239.2
The Vale of Glamorgan	7.1	563.7	66.4	505.1	49.4	1,191.7	90.0	1,281.8
Rhondda Cynon Taf	4.0	900.4	32.2	916.4	62.3	1,915.3	1.0	1,916.3
Merthyr Tydfil	3.0	262.9	0.0	174.0	22.0	461.9	0.0	461.9
Caerphilly	0.0	721.1	0.0	684.6	27.0	1,432.7	11.7	1,444.4
Blaenau Gwent	0.0	265.2	88.5	117.7	20.7	492.2	0.0	492.2
Torfaen	2.0	341.1	0.0	374.2	13.5	730.8	0.0	730.8
Monmouthshire	0.0	299.6	0.0	289.8	11.0	600.5	189.7	790.2
Newport	4.5	631.5	0.0	600.5	27.7	1,264.2	61.0	1,325.3
Cardiff	15.2	1,414.7	0.0	1,234.9	101.1	2,765.9	294.3	3,060.2
Wales	42.3	12,170.8	345.2	10,983.9	693.6	24,235.8	1,106.2	25,342.0
Wales – January 2015	43.4	12,240.2	290.0	11,268.8	668.2	24,510.8	1,091.8	25,602.6
Wales – January 2014	52.8	12,308.2	221.7	11,578.8	660.9	24,822.5	1,084.0	25,906.5
Wales – January 2013	58.3	12,144.6	222.7	11,707.2	637.7	24,770.6	1,108.1	25,878.7
Wales – January 2012	63.6	12,026.2	.	11,868.3	642.6	24,600.7	1,096.2	25,696.9

Source: School Census

Table 9: Pupil teacher ratios within schools, by local authority, January 2016

	<i>FTE</i>							
	Nursery	Primary	Middle	Secondary	Special	Total	Independent	All schools
Isle of Anglesey	.	19.7	.	16.2	6.8	17.8	9.0	17.6
Gwynedd	.	20.2	.	15.2	7.3	17.5	7.3	17.0
Conwy	.	19.9	.	15.2	8.0	17.3	5.6	16.1
Denbighshire	.	21.1	16.6	16.6	7.3	18.3	8.0	17.7
Flintshire	.	21.2	.	16.1	7.0	18.4	4.8	18.3
Wrexham	7.7	21.2	.	15.9	10.6	18.8	2.4	18.6
Powys	.	20.1	14.9	16.2	7.0	17.7	8.8	17.2
Ceredigion	.	18.5	14.9	16.3	.	17.0	.	17.0
Pembrokeshire	.	21.1	.	16.8	6.5	18.8	9.0	18.5
Carmarthenshire	20.0	19.9	.	16.2	4.8	17.9	8.3	17.6
Swansea	.	22.5	.	17.0	6.4	19.8	8.3	19.5
Neath Port Talbot	.	22.1	.	15.7	5.9	18.5	.	18.5
Bridgend	.	22.6	.	16.2	6.7	18.9	7.8	18.6
The Vale of Glamorgan	17.9	20.9	15.0	16.0	4.7	17.8	6.3	17.0
Rhondda Cynon Taf	7.8	24.5	15.7	16.7	8.5	20.1	.	20.0
Merthyr Tydfil	21.3	21.0	.	16.2	7.6	18.6	.	18.6
Caerphilly	.	22.3	.	16.3	4.9	19.1	11.2	19.0
Blaenau Gwent	.	20.5	15.5	16.4	4.9	18.0	.	18.0
Torfaen	13.8	23.7	.	16.7	7.5	19.8	.	19.8
Monmouthshire	.	21.6	.	16.6	3.6	18.8	7.5	16.1
Newport	19.4	22.0	.	16.9	5.6	19.2	9.5	18.7
Cardiff	10.3	21.9	.	16.1	5.4	18.6	9.2	17.7
Wales	14.0	21.6	15.3	16.3	6.5	18.6	8.0	18.2
Wales – January 2015	14.6	21.2	14.9	16.2	6.6	18.4	8.2	18.0
Wales – January 2014	14.9	20.8	15.8	16.1	6.5	18.2	7.9	17.7
Wales – January 2013	15.1	20.7	16.2	16.3	6.7	18.2	7.9	17.8
Wales – January 2012	15.2	20.7	.	16.7	6.6	18.4	8.1	17.9

Source: School Census

Table 10: Full-time equivalent support staff, by local authority, January 2016

	<i>FTE</i>					
	Nursery	Primary	Middle	Secondary	Special	Total
Isle of Anglesey	0.0	301.3	0.0	166.6	37.0	504.9
Gwynedd	0.0	490.4	0.0	228.4	63.3	782.2
Conwy	0.0	366.0	0.0	205.2	79.7	650.9
Denbighshire	0.0	508.0	26.1	258.2	116.5	908.8
Flintshire	0.0	736.2	0.0	294.0	85.3	1,115.5
Wrexham	7.4	778.4	0.0	282.8	162.7	1,231.3
Powys	0.0	503.3	24.3	237.7	118.6	883.9
Ceredigion	0.0	304.0	94.6	160.5	0.0	559.2
Pembrokeshire	0.0	805.7	0.0	335.0	104.0	1,244.7
Carmarthenshire	7.0	966.5	0.0	527.4	64.6	1,565.5
Swansea	0.0	1,185.6	0.0	602.0	95.2	1,882.8
Neath Port Talbot	0.0	602.5	0.0	250.7	100.1	953.3
Bridgend	0.0	730.0	0.0	310.8	166.1	1,207.0
The Vale of Glamorgan	16.9	595.5	22.7	233.6	152.5	1,021.2
Rhondda Cynon Taf	1.0	1,204.7	19.3	447.1	172.0	1,844.1
Merthyr Tydfil	4.0	280.0	0.0	80.8	68.3	433.1
Caerphilly	0.0	894.3	0.0	312.7	75.8	1,282.9
Blaenau Gwent	0.0	371.3	63.5	96.0	64.6	595.4
Torfaen	4.1	498.3	0.0	229.0	62.1	793.5
Monmouthshire	0.0	377.2	0.0	162.8	28.3	568.3
Newport	13.1	771.1	0.0	393.0	68.6	1,245.8
Cardiff	22.6	1,761.6	0.0	717.4	219.2	2,720.7
Wales	76.1	15,032.1	250.5	6,531.8	2,104.4	23,994.9
Wales – January 2015	84.8	15,295.2	219.7	6,801.0	2,040.3	24,441.0
Wales – January 2014	104.0	15,095.2	153.4	6,980.8	2,021.1	24,354.5
Wales – January 2013	115.2	14,675.2	144.6	6,767.6	1,844.2	23,546.8
Wales – January 2012	123.4	13,703.7	.	6,714.0	1,753.4	22,294.5

Source: School Census

Free school meals (FSM) ([Table 11](#))

- The **number of pupils** eligible for free meals has decreased from 80,668 pupils in January 2015 to 78,476 pupils in January 2016.
- The **percentage of pupils** known to be eligible for free meals has decreased from 17.3 in January 2015 to 16.8 in January 2016.
- The **number of compulsory aged school pupils (5-15)** eligible for free meals has decreased from 68,388 pupils in January 2015 to 67,040 pupils in January 2016.
- The **percentage of compulsory aged school pupils (5-15)** known to be eligible for free meals has decreased from 18.8 in January 2015 to 18.4 in January 2016.
- The percentage of pupils known to be eligible for free meals was highest in special schools at 41.8 per cent of pupils and 43.1 per cent of compulsory aged school pupils (5-15).
- The **number of pupils** eligible for free meals was highest in Cardiff at 10,371 and lowest in Ceredigion at 1,008.
- But the **percentage of pupils** eligible for free meals was highest in Blaenau Gwent at 25.0 and lowest in Powys at 10.4.
- The **number of compulsory aged school pupils (5-15)** eligible for free meals was highest in Cardiff at 9,007 and lowest in Ceredigion at 834.
- Powys had the lowest **percentage of compulsory aged school pupils (5-15)** eligible for free meals at 10.7, and Blaenau Gwent had the highest at 27.7.

Table 11: Pupils known to be eligible for free meals in maintained schools, January 2016

	All pupils										Aged 5-15											
	Nursery		Primary		Middle		Secondary		Special		All Schools		Primary		Middle		Secondary		Special		All Schools	
	Number	Per Cent	Number	Per Cent	Number	Per Cent	Number	Per Cent	Number	Per Cent	Number	Per Cent	Number	Per Cent	Number	Per Cent	Number	Per Cent	Number	Per Cent	Number	Per Cent
Isle of Anglesey	.	.	869	15.1	.	.	572	15.0	33	37.5	1,474	15.3	736	17.1	.	.	524	16.4	27	42.9	1,287	17.0
Gwynedd	.	.	1,249	12.4	.	.	732	10.8	38	22.6	2,019	11.8	1,056	13.9	.	.	692	11.6	31	23.5	1,779	13.0
Conwy	.	.	1,351	15.0	.	.	886	13.3	81	38.9	2,318	14.6	1,117	16.5	.	.	814	15.0	67	43.5	1,998	16.2
Denbighshire	.	.	1,523	17.7	33	6.4	979	15.6	99	39.0	2,634	16.8	1,330	20.6	29	7.1	924	17.4	77	42.3	2,360	19.1
Flintshire	.	.	1,954	14.0	.	.	1,119	11.8	78	37.9	3,151	13.3	1,678	16.0	.	.	1,057	13.2	57	40.1	2,792	15.0
Wrexham	0	0.0	1,944	14.8	.	.	876	14.1	141	45.3	2,961	15.0	1,624	16.7	.	.	863	14.7	100	45.9	2,587	16.4
Powys	.	.	1,052	10.5	58	11.2	670	9.3	93	31.8	1,873	10.4	813	10.6	45	10.9	608	10.0	74	34.3	1,540	10.7
Ceredigion	.	.	543	11.7	156	11.1	309	8.9	.	.	1,008	10.6	428	12.0	130	11.8	276	10.2	.	.	834	11.3
Pembrokeshire	.	.	1,547	14.4	.	.	935	13.7	50	34.2	2,532	14.3	1,301	16.5	.	.	880	15.3	34	32.1	2,215	16.1
Carmarthenshire	15	18.8	2,786	17.6	.	.	1,643	14.8	48	41.0	4,492	16.6	2,119	17.9	.	.	1,563	16.3	38	38.4	3,720	17.3
Swansea	.	.	3,830	17.3	.	.	2,247	16.7	79	44.9	6,156	17.2	3,213	20.3	.	.	2,121	17.8	42	40.4	5,376	19.3
Neath Port Talbot	.	.	2,592	20.3	.	.	1,636	21.1	123	54.7	4,351	21.0	2,198	23.8	.	.	1,622	22.0	114	56.2	3,934	23.4
Bridgend	.	.	2,583	19.3	.	.	1,434	15.5	138	41.1	4,155	18.1	1,864	19.3	.	.	1,291	17.2	96	42.3	3,251	18.7
The Vale of Glamorgan	0	0.0	1,487	11.8	63	6.2	957	11.8	97	41.5	2,604	11.7	1,241	13.2	57	7.1	868	13.4	56	39.2	2,222	13.2
Rhondda Cynon Taf	10	32.3	5,203	23.2	34	6.6	2,806	18.4	251	47.3	8,304	21.4	3,682	22.6	28	7.1	2,507	20.1	166	47.2	6,383	21.6
Merthyr Tydfil	32	42.1	1,181	20.8	.	.	598	21.2	75	44.6	1,886	21.6	903	21.7	.	.	598	21.2	57	49.1	1,558	22.0
Caerphilly	.	.	3,575	20.7	.	.	2,277	20.4	53	39.8	5,905	20.7	2,901	23.2	.	.	2,185	22.0	40	42.1	5,126	22.8
Blaenau Gwent	.	.	1,421	24.1	325	23.3	539	27.8	43	42.6	2,328	25.0	1,211	28.6	316	24.0	539	27.8	29	41.4	2,095	27.7
Torfaen	0	0.0	1,509	17.5	.	.	930	14.9	32	31.7	2,471	16.5	1,279	19.8	.	.	858	16.2	21	30.9	2,158	18.2
Monmouthshire	.	.	730	10.9	.	.	448	9.3	40	100.0	1,218	10.5	622	11.6	.	.	406	10.3	40	100.0	1,068	11.4
Newport	0	0.0	2,607	17.7	.	.	1,610	15.9	48	31.0	4,265	16.9	2,221	20.0	.	.	1,493	18.2	36	32.4	3,750	19.3
Cardiff	0	0.0	6,374	19.3	.	.	3,740	18.9	257	46.6	10,371	19.3	5,406	22.2	.	.	3,380	20.4	221	48.4	9,007	21.8
Wales	57	5.6	47,910	17.3	669	12.5	27,943	15.6	1,897	41.8	78,476	16.8	38,943	19.0	605	13.6	26,069	17.1	1,423	43.1	67,040	18.4
Wales – January 2015	63	5.9	49,184	18.0	632	14	28,859	15.8	1,930	43.4	80,668	17.3	39,525	19.6	572	16	26,815	17.4	1,476	46.1	68,388	18.8
Wales – January 2014	81	6.0	49,315	18.3	577	16	29,730	15.9	1,835	42.3	81,538	17.5	39,881	20.1	534	18	27,589	17.5	1,414	45.3	69,418	19.1
Wales – January 2013	106	7.4	50,056	18.9	557	15.3	30,962	16.2	1,817	42.1	83,498	18.0	40,135	20.7	508	17.1	28,835	17.7	1,415	44.6	70,893	19.5
Wales – January 2012	133	8.7	49,391	18.8	.	.	31,276	15.8	1,743	41.0	82,543	17.7	39,656	20.6	.	.	29,252	17.4	1,357	42.8	70,265	19.3

Source: School Census

Ethnicity [\(Table 12\)](#)

- Of the **total number of pupils aged 5 or over** at primary, middle, secondary and special schools in Wales, 89.4 per cent were classed as White British.
- The **percentage of pupils** whose ethnic background was classified as minority ethnic origin was 10.1 and 0.5 per cent were unknown or not stated.
- Of the **pupils whose ethnic background was classified as Black**, 81.8 per cent of them were classified as Black African.
- Of the **pupils whose ethnic background was classified as Asian**, 22.4 per cent of them were classified as Indian, 32.8 per cent as Pakistani, and 34.7 per cent as Bangladeshi.

Table 12: Number of pupils aged 5 or over, by ethnic background, January 2012-2016

Ethnic background	2012		2013		2014		2015		2016	
	Number	Per cent (a)	Number	Per cent (a)	Number	Per cent (a)	Number	Per cent (a)	Number	Per cent (a)
White	367,176	93.1	365,356	93.0	364,260	92.8	363,031	92.5	362,290	92.2
White British	359,629	91.2	357,156	90.9	355,085	90.5	352,850	89.9	351,145	89.4
Traveller	323	0.1	345	0.1	346	0.1	378	0.1	385	0.1
Gypsy/ Roma	496	0.1	516	0.1	545	0.1	579	0.1	611	0.2
Any other White background	6,728	1.7	7,339	1.9	8,284	2.1	9,224	2.4	10,149	2.6
Mixed	8,420	2.1	8,808	2.2	9,337	2.4	9,872	2.5	10,592	2.7
White and Black Caribbean	2,046	0.5	2,082	0.5	2,172	0.6	2,227	0.6	2,314	0.6
White and Black African	979	0.2	1,052	0.3	1,120	0.3	1,244	0.3	1,398	0.4
White and Asian	1,958	0.5	2,016	0.5	2,115	0.5	2,212	0.6	2,351	0.6
Any other mixed background	3,437	0.9	3,658	0.9	3,930	1.0	4,189	1.1	4,529	1.2
Asian	7,971	2.0	8,276	2.1	8,696	2.2	8,914	2.3	9,185	2.3
Indian	1,634	0.4	1,731	0.4	1,830	0.5	1,931	0.5	2,056	0.5
Pakistani	2,630	0.7	2,704	0.7	2,866	0.7	2,947	0.8	3,009	0.8
Bangladeshi	2,816	0.7	2,933	0.7	3,064	0.8	3,119	0.8	3,188	0.8
Any other Asian background	891	0.2	908	0.2	936	0.2	917	0.2	932	0.2
Black	2,778	0.7	2,875	0.7	3,005	0.8	3,169	0.8	3,355	0.9
Black Caribbean	208	0.1	201	0.1	194	0.0	187	0.0	194	0.0
Black African	2,225	0.6	2,308	0.6	2,452	0.6	2,598	0.7	2,743	0.7
Any other Black background	345	0.1	366	0.1	359	0.1	384	0.1	418	0.1
Chinese	659	0.2	667	0.2	680	0.2	702	0.2	720	0.2
Any other ethnic group	3,863	1.0	3,951	1.0	4,145	1.1	4,451	1.1	4,639	1.2
Total with valid category	390,867	99.1	389,933	99.3	390,123	99.4	390,139	99.4	390,781	99.5
Unknown or not stated	3,567	0.9	2,777	0.7	2,444	0.6	2,201	0.6	2,081	0.5
All pupils	394,434	100.0	392,710	100.0	392,567	100.0	392,340	100.0	392,862	100.0

Source: School Census
(a) Of all pupils aged 5 or over.

Special educational needs (SEN)

- 22.5 per cent of **all pupils at maintained schools** in Wales have some form of special educational need; 11.8 per cent of the pupils with special educational needs have statements of SEN. ([Table 13](#))
- Of the pupils with special educational needs, the most common major need was general learning difficulties, representing 28.2 per cent of pupils with some form of SEN. ([Table 15](#))
- 13.8 per cent of **pupils at independent schools** have some form of special educational need; 33.6 per cent of these pupils with SEN have statements of SEN. Of the pupils with statements of special educational needs, 47.8 per cent had behavioural, emotional and social difficulties as their major need, 18.0 per cent of pupils had autistic spectrum disorders and 9.5 per cent of pupils had Profound & multiple learning difficulties as their major need. ([Table 16](#))

Table 13: Pupils with a statement of special educational needs in maintained schools, by major need, January 2012-2016

Major need	2012			2013			2014			2015			2016		
	Number	Percentage		Number	Percentage		Number	Percentage		Number	Percentage		Number	Percentage	
		Incid- ence (a)	Place- ment (b)		Incid- ence (a)	Place- ment (b)		Incid- ence (a)	Place- ment (b)		Incid- ence (a)	Place- ment (b)		Incid- ence (a)	Place- ment (b)
Moderate learning difficulties	2,098	0.5	16.0	1,911	0.4	15.0	1,731	0.4	13.8	1,617	0.3	13.0	1,425	0.3	11.5
General learning difficulties	162	-	1.2	179	-	1.4	220	-	1.8	253	0.1	2.0	286	0.1	2.3
Severe learning difficulties	1,831	0.4	14.0	1,809	0.4	14.2	1,790	0.4	14.3	1,709	0.4	13.7	1,658	0.4	13.3
Profound & multiple learning difficulties	620	0.1	4.7	625	0.1	4.9	623	0.1	5.0	630	0.1	5.1	635	0.1	5.1
Dyslexia	494	0.1	3.8	423	0.1	3.3	369	0.1	2.9	307	0.1	2.5	261	0.1	2.1
Dyscalculia	6	-	-	6	-	-	7	-	0.1	7	-	0.1	3	-	-
Dyspraxia	38	-	0.3	31	-	0.2	28	-	0.2	32	-	0.3	27	-	0.2
Attention Deficit Hyperactivity Disorder	113	-	0.9	128	-	1.0	147	-	1.2	143	-	1.1	173	-	1.4
Autistic Spectrum Disorders	2,532	0.5	19.3	2,651	0.6	20.8	2,778	0.6	22.2	2,905	0.6	23.4	3,094	0.7	24.9
Physical and medical difficulties	1,179	0.3	9.0	1,132	0.2	8.9	1,157	0.2	9.2	1,182	0.3	9.5	1,216	0.3	9.8
Hearing impairment	344	0.1	2.6	343	0.1	2.7	344	0.1	2.7	324	0.1	2.6	321	0.1	2.6
Visual impairment	202	-	1.5	216	-	1.7	213	-	1.7	217	-	1.7	202	-	1.6
Multiple sensory impairment	29	-	0.2	26	-	0.2	22	-	0.2	17	-	0.1	19	-	0.2
Speech, language & communication difficulties	1,936	0.4	14.8	1,929	0.4	15.1	1,853	0.4	14.8	1,869	0.4	15.0	1,830	0.4	14.7
Behavioural, emotional and social difficulties	1,514	0.3	11.6	1,329	0.3	10.4	1,248	0.3	10.0	1,225	0.3	9.8	1,284	0.3	10.3
Total	13,098	2.8	100.0	12,738	2.7	100.0	12,530	2.7	100.0	12,437	2.7	100.0	12,434	2.7	100.0

Source: School Census

(a) Incidence - the number of pupils expressed as a proportion of the total number of pupils on roll in maintained schools.

(b) Placement - the number of pupils expressed as a proportion of the total number of pupils within each SEN grouping in maintained schools.

e.g. Number of pupils with a statement of SEN of moderate learning difficulties divided by the total number of pupils with a statement of SEN in maintained schools.

Table 14: Pupils with a special educational need but no statement, in maintained schools, by major need, January 2012-2016

Major need	2012			2013			2014			2015			2016		
	Number	Percentage		Number	Percentage		Number	Percentage		Number	Percentage		Number	Percentage	
		Incid- ence (a)	Place- ment (b)		Incid- ence (a)	Place- ment (b)		Incid- ence (a)	Place- ment (b)		Incid- ence (a)	Place- ment (b)		Incid- ence (a)	Place- ment (b)
Moderate learning difficulties	31,999	6.9	35.6	27,338	5.9	30.0	23,077	5.0	24.9	19,014	4.1	20.6	16,558	3.5	17.9
General learning difficulties	16,706	3.6	18.6	20,855	4.5	22.9	24,670	5.3	26.6	27,710	6.0	30.0	29,343	6.3	31.7
Severe learning difficulties	625	0.1	0.7	654	0.1	0.7	549	0.1	0.6	457	0.1	0.5	422	0.1	0.5
Profound & multiple learning difficulties	109	-	0.1	150	-	0.2	152	-	0.2	155	-	0.2	131	-	0.1
Dyslexia	8,810	1.9	9.8	8,738	1.9	9.6	8,609	1.9	9.3	8,283	1.8	9.0	7,472	1.6	8.1
Dyscalculia	414	0.1	0.5	476	0.1	0.5	616	0.1	0.7	554	0.1	0.6	432	0.1	0.5
Dyspraxia	459	0.1	0.5	506	0.1	0.6	546	0.1	0.6	534	0.1	0.6	529	0.1	0.6
Attention Deficit Hyperactivity Disorder	688	0.1	0.8	858	0.2	0.9	1,020	0.2	1.1	1,100	0.2	1.2	1,195	0.3	1.3
Autistic Spectrum Disorders	1,436	0.3	1.6	1,576	0.3	1.7	1,814	0.4	2.0	2,010	0.4	2.2	2,233	0.5	2.4
Physical and medical difficulties	3,088	0.7	3.4	3,200	0.7	3.5	3,280	0.7	3.5	3,367	0.7	3.6	3,476	0.7	3.7
Hearing impairment	1,588	0.3	1.8	1,738	0.4	1.9	1,805	0.4	1.9	1,858	0.4	2.0	1,894	0.4	2.0
Visual impairment	621	0.1	0.7	629	0.1	0.7	649	0.1	0.7	650	0.1	0.7	659	0.1	0.7
Multiple sensory impairment	35	-	-	40	-	-	35	-	-	31	-	-	30	-	-
Speech, language & communication difficulties	11,308	2.4	12.6	12,011	2.6	13.2	12,827	2.8	13.8	13,467	2.9	14.6	14,429	3.1	15.6
Behavioural, emotional and social difficulties	12,054	2.6	13.4	12,284	2.6	13.5	13,124	2.8	14.1	13,330	2.9	14.4	13,906	3.0	15.0
Total	89,940	19.3	100.0	91,053	19.6	100.0	92,773	19.9	100.0	92,520	19.9	100.0	92,709	19.9	100.0

Source: School Census

(a) Incidence - the number of pupils expressed as a proportion of the total number of pupils on roll in maintained schools.

(b) Placement - the number of pupils expressed as a proportion of the total number of pupils within each SEN grouping in maintained schools.

e.g. Number of pupils with a statement of SEN of moderate learning difficulties divided by the total number of pupils with a statement of SEN in maintained schools.

Table 15: All pupils with special educational needs in maintained schools, by major need, January 2012-2016

Major need	2012			2013			2014			2015			2016		
	Number	Percentage		Number	Percentage		Number	Percentage		Number	Percentage		Number	Percentage	
		Incid- ence (a)	Place- ment (b)		Incid- ence (a)	Place- ment (b)		Incid- ence (a)	Place- ment (b)		Incid- ence (a)	Place- ment (b)		Incid- ence (a)	Place- ment (b)
Moderate learning difficulties	34,097	7.3	33.1	29,249	6.3	28.2	24,808	5.3	23.6	20,631	4.4	19.7	17,983	3.9	17.1
General learning difficulties	16,868	3.6	16.4	21,034	4.5	20.3	24,890	5.4	23.6	27,963	6.0	26.6	29,629	6.4	28.2
Severe learning difficulties	2,456	0.5	2.4	2,463	0.5	2.4	2,339	0.5	2.2	2,166	0.5	2.1	2,080	0.4	2.0
Profound & multiple learning difficulties	729	0.2	0.7	775	0.2	0.7	775	0.2	0.7	785	0.2	0.7	766	0.2	0.7
Dyslexia	9,304	2.0	9.0	9,161	2.0	8.8	8,978	1.9	8.5	8,590	1.8	8.2	7,733	1.7	7.4
Dyscalculia	420	0.1	0.4	482	0.1	0.5	623	0.1	0.6	561	0.1	0.5	435	0.1	0.4
Dyspraxia	497	0.1	0.5	537	0.1	0.5	574	0.1	0.5	566	0.1	0.5	556	0.1	0.5
Attention Deficit Hyperactivity Disorder	801	0.2	0.8	986	0.2	0.9	1,167	0.3	1.1	1,243	0.3	1.2	1,368	0.3	1.3
Autistic Spectrum Disorders	3,968	0.9	3.9	4,227	0.9	4.1	4,592	1.0	4.4	4,915	1.1	4.7	5,327	1.1	5.1
Physical and medical difficulties	4,267	0.9	4.1	4,332	0.9	4.2	4,437	1.0	4.2	4,549	1.0	4.3	4,692	1.0	4.5
Hearing impairment	1,932	0.4	1.9	2,081	0.4	2.0	2,149	0.5	2.0	2,182	0.5	2.1	2,215	0.5	2.1
Visual impairment	823	0.2	0.8	845	0.2	0.8	862	0.2	0.8	867	0.2	0.8	861	0.2	0.8
Multiple sensory impairment	64	-	0.1	66	-	0.1	57	-	0.1	48	-	-	49	-	-
Speech, language & communication difficulties	13,244	2.8	12.9	13,940	3.0	13.4	14,680	3.2	13.9	15,336	3.3	14.6	16,259	3.5	15.5
Behavioural, emotional and social difficulties	13,568	2.9	13.2	13,613	2.9	13.1	14,372	3.1	13.6	14,555	3.1	13.9	15,190	3.3	14.4
Total	103,038	22.1	100.0	103,791	22.3	100.0	105,303	22.6	100.0	104,957	22.5	100.0	105,143	22.5	100.0
Total number of pupils on roll	465,943			464,868			465,081			465,704			466,555		

Source: School Census

(a) Incidence - the number of pupils expressed as a proportion of the total number of pupils on roll in maintained schools.

(b) Placement - the number of pupils expressed as a proportion of the total number of pupils within each SEN grouping in maintained schools.

e.g. Number of pupils with a statement of SEN of moderate learning difficulties divided by the total number of pupils with a statement of SEN in maintained schools.

Table 16: Pupils with special educational needs in independent schools, by major need, January 2016

	Independent schools	
	Number	Incidence % (a)
Pupils with a statement of special educational need:		
Moderate learning difficulties	15	0.2
General learning difficulties	0	0.0
Severe learning difficulties	13	0.1
Profound & multiple learning difficulties	39	0.4
Dyslexia	35	0.4
Dyscalculia	*	*
Dyspraxia	*	*
Attention Deficit Hyperactivity Disorder	14	0.2
Autistic Spectrum Disorders	74	0.8
Physical and medical difficulties	*	*
Hearing Impairment	*	*
Visual Impairment	*	*
Multiple Sensory Impairment	0	0.0
Speech, language & communication difficulties	11	0.1
Behavioural, emotional and social difficulties	197	2.2
Total	412	4.6
Pupils with special educational needs but no statement	813	9.2
Total pupils on roll in independent schools (headcount)	8,880	100.0

Source: School Census

(a) Incidence of pupils - the number of pupils expressed as a proportion of the total number of pupils on roll in Independent schools.

Class sizes

- 7.6 per cent of pupils (8,196) were in infant classes of over 30 pupils, up from 7.3 per cent in January 2015. ([Table 17](#))
- 255 infant classes (6.0 per cent) in Wales had more than 30 pupils, with 241 of these classes having permissible exceptions. This is more than at January 2015 when 246 classes (5.8 per cent) had over 30 pupils, of which 222 had permissible exceptions. ([Table 17](#))
- 10.2 per cent of junior classes (540) were regarded as large classes and had a total of 17,279 pupils (12.7 per cent of all pupils). This is more than at January 2015 when 405 classes (7.7 per cent) were considered large and they had a total of 12,929 (9.7 per cent of all pupils). ([Table 18](#))
- The number of pupils in unlawfully large infant classes decreased from 795 in January 2015 to 490 in 2016. ([Table 17](#))

Table 17: Infant class sizes in primary and middle schools (a)

	2013		2014		2015		2016	
	Number	Per cent (b)	Number	Per cent (b)	Number	Per cent (b)	Number	Per cent (b)
Average class size	25.1	.	25.2	.	25.4	.	25.6	.
All classes	4,203	.	4,186	.	4,247	.	4,233	.
All pupils	105,398	.	105,320	.	107,797	.	108,441	.
<u>Classes (30 pupils or less) (c)</u>								
Classes	3,985	94.8	3,960	94.6	4,001	94.2	3,978	94.0
Pupils	98,429	93.4	98,019	93.1	99,962	92.7	100,245	92.4
<u>Large Infant Classes (31 or more pupils) (d)</u>								
Classes	218	5.2	226	5.4	246	5.8	255	6.0
of which:								
Lawfully large classes								
with 'excepted' pupils (e)	193	4.6	202	4.8	222	5.2	241	5.7
Unlawfully large classes (f)	25	0.6	24	0.6	24	0.6	14	0.3
Pupils in large classes (g)	6,969	6.6	7,301	6.9	7,835	7.3	8,196	7.6
of which:								
Lawfully large classes								
with 'excepted' pupils (e)	6,135	5.8	6,448	6.1	7,040	6.5	7,706	7.1
Unlawfully large classes (f)	834	0.8	853	0.8	795	0.7	490	0.5

Source: School Census

- (a) At January each year. (At September each year prior to 2013. The timing of these different collections is significant here as the January pupil cohort would be greater than the September one. Care should be taken when comparing data from these two collections.)
- (b) Percentage of all classes/pupils.
- (c) The Schools Standards and Framework Act 1998 and associated regulations placed a statutory duty on local authorities and governing bodies to limit the size of Reception classes to 30 from 1999; Reception and Year 1 classes from 2000 and Reception, Year 1 and Year 2 from 2001. Mixed year or mixed Key Stage classes are subject to the limit, where the majority of the class is made up of pupils in the appropriate year groups; this includes mixed nursery/reception classes. In this table, where a class has more than one teacher the number of pupils divided by the number of teachers determines if the size is over 30.
- (d) Both infant and junior classes with one teacher are allowed to have more than 30 children in very specific circumstances. These are called exceptions. Exception categories for infant classes are defined in the Schedule to the Education (Infant Class Sizes) (Wales) Regulations 1998, as amended by the Education (Infant Class Sizes) (Wales) (Amendment) Regulations 2009. Exception categories for junior classes are not set out in regulations but are enforced as part of the data collection.
- (e) Includes only those classes where there are pupils who have been admitted as exceptions making the class size within the legal limit of 30 pupils or less.
- (f) Classes of 31 or more, excluding those large classes engaged in an excepted activity.
- (g) Includes all pupils in large classes, including those with excepted activity.

Table 18: Junior class sizes in primary and middle schools (a)

	2013		2014		2015		2016	
	Number	Per cent (b)	Number	Per cent (b)	Number	Per cent (b)	Number	Per cent (b)
Average class size	24.5	.	24.8	.	25.2	.	25.6	.
All classes	5,208	.	5,269	.	5,277	.	5,319	.
All pupils	127,560	.	130,624	.	132,774	.	136,261	.
<u>Classes (30 pupils or less)</u>								
Classes	4,900	94.1	4,896	92.9	4,872	92.3	4,779	89.8
Pupils	117,790	92.3	118,740	90.9	119,845	90.3	118,982	87.3
<u>Large Junior Classes (31 or more pupils) (c)</u>								
Classes	308	5.9	373	7.1	405	7.7	540	10.2
of which:								
With 'excepted' pupils (d)	255	4.9	329	6.2	316	6.0	400	7.5
Without 'excepted' pupils (e)	53	1.0	44	0.8	89	1.7	140	2.6
Pupils in large classes (f)	9,770	7.7	11,884	9.1	12,929	9.7	17,279	12.7
of which:								
With 'excepted' pupils (d)	8,082	6.3	10,458	8.0	10,074	7.6	12,711	9.3
Without 'excepted' pupils (e)	1,688	1.3	1,426	1.1	2,855	2.2	4,568	3.4

Source: School Census

- (a) At January each year. (At September each year prior to 2013. The timing of these different collections is significant here as the January pupil cohort would be greater than the September one. Care should be taken when comparing data from these two collections.)
- (b) Percentage of all classes/pupils.
- (c) Both infant and junior classes with one teacher are allowed to have more than 30 children in very specific circumstances. These are called exceptions. Exception categories for infant classes are defined in the Schedule to the Education (Infant Class Sizes) (Wales) Regulations 1998, as amended by the Education (Infant Class Sizes) (Wales) (Amendment) Regulations 2009. Exception categories for junior classes are not set out in regulations but are enforced as part of the data collection. In this table, where a class has more than one teacher the number of pupils divided by the number of teachers determines if the size is over 30.
- (d) Includes only those classes where there are pupils who have been admitted as exceptions making the class size within the legal limit of 30 pupils or less.
- (e) Classes of 31 or more, excluding those large classes engaged in an excepted activity.
- (f) Includes all pupils in large classes, including those with excepted activity.

Sickness absence of teachers

These figures are not included in the School Census. This information is collected directly from the local authorities in January each year. The data covers the sickness absence (including unpaid absence) of qualified and unqualified teachers with permanent contracts or contracts of more than 1 month, during the previous calendar year.

- 61 per cent of teachers took sickness absence during 2015, compared with 62 per cent during 2014.
- The average annual number of sick-days per teacher taking sickness absence was 11 days in 2015, unchanged on 2014.
- The total number of sick-days taken by teachers during 2015 was 184,992 – over 3,000 days more than during 2014 but over 28,000 fewer days than in 2011.

Table 19: Sickness absence of teachers in maintained schools, 1 January - 31 December (a) (b)

	2011	2012	2013	2014	2015
Teachers taking a period of sickness absence (c):					
Full-time teachers:					
Number	14,229	14,343	13,779	13,986 (r)	13,721
Percentage	64	64	61	63 (r)	63
Part-time teachers:					
Number	2,720	2,861	2,955	3,150 (r)	3,062
Percentage	48	51	53	56 (r)	55
Total teachers:					
Number	16,949	17,204	16,734	17,136 (r)	16,783
Percentage	61	61	59	62 (r)	61
Average number of days lost due to sickness:					
per full-time teacher taking a period of sick leave	13	11	10	10	11
per teacher (all full-time teachers)	8	7	6	7	7
Average number of days lost due to sickness:					
per part time teacher taking a period of sick leave	12	11	12	11	12
per teacher (all part-time teachers)	6	6	6	6	6
Average number of days lost due to sickness:					
per teacher taking a period of sick leave	13	11	11	11	11
per teacher (all teachers)	8	7	6	7	7
Sickness absences by duration (in days):					
Full-time teachers:					
5 days or less	50,083	52,020	44,666	45,852 (r)	44,427
6 to 20 days	36,635	28,719	23,692	24,257 (r)	22,976
more than 20 days	94,032	75,447	72,960	76,106 (r)	82,051
Total (full-time)	180,750	156,186	141,318	146,215 (r)	149,453
Part-time teachers:					
5 days or less	8,498	8,731	8,962	9,228 (r)	8,038
6 to 20 days	8,409	5,772	5,634	5,456 (r)	5,519
more than 20 days	15,660	16,688	21,420	20,486 (r)	21,982
Total (part-time)	32,567	31,191	36,016	35,170 (r)	35,540
Total	213,317	187,377	177,334	181,385 (r)	184,992

Source: Local Authorities

(a) Sickness absence (including unpaid absence) of qualified and unqualified teachers with permanent contracts or contracts of more than 1 month.

(b) 2014 was the first year teacher numbers were not collected from the STATS3 return. The percentage of teachers taking a period of sickness absence has been calculated using PLASC data. Percentages in previous years have also been recalculated using PLASC data, including trainees on initial training courses. Link to previous data is attached:

[Teachers in service, vacancies and sickness absence.](#)

(c) Headcount, not full time equivalents.

(r) Data revised July 2016

Key Quality Information

Coverage

The census data in this release relates to all maintained and independent schools in Wales. The teacher sickness absence data relates to all maintained schools only.

Status

Schools' data are derived from the Pupil Level Annual School Census (PLASC) returns and STATS 1 returns supplied by schools open on Census day in January each year. The returns are authorised by headteachers and validated by Local Authorities. The teacher sickness absence data is collected directly from the local authorities in January each year.

Timeliness

The census data in this release relate to the position on Tuesday 12 January 2016. The teacher sickness absence data relates to the preceding calendar year.

Revisions to Table 19

Teacher sickness absence annual returns

From 2016 the teacher sickness absence data collection form gives Local Authorities a chance to review data submitted for the previous calendar year. In built validations compare the new and previous year's data, this highlights any significant changes and provides Local Authorities the opportunity to revise data from the previous year if required.

Data for 2014 have been revised in this publication, as in many cases system developments have allowed this data to be captured more accurately and timely than in previous years. Where this data has been revised it will be clearly marked with an (r).

We follow the [Welsh Government's statistical revisions policy](#).

Source of data

Pupil Level Annual School Census (PLASC) / School Census (STATS1 Return)

PLASC is an electronic collection of pupil and school level data provided by all maintained schools in January each year. Schools record data on pupils and the school throughout the year in their Management Information System (MIS) software. This data is collated into an electronic PLASC return and submitted to the Welsh Government through DEWI, a secure online data transfer system developed by the Welsh Government. Various stages of automated validation and sense-checking are built into the process to ensure a high quality of data to inform policy making and funding.

From January 1994 independent schools in Wales complete a STATS1 return which replaced Form 101A (school census return for independent schools prior to January 1994).

Definitions

Free School Meals: Pupils are eligible for free school meals if their families are in receipt of certain benefits/support payments, [which are outlined in the following web page](#).

Full-time equivalent (FTE):

- FTE pupil numbers count part-time pupils as 0.5.
- FTE of part-time teachers expresses the teachers' service in hours as a proportion of a school week: 32.5 hours for maintained schools and 26 hours for independent schools.

Pupil Teacher Ratio (PTR): calculated by dividing the FTE number of pupils by the FTE number of qualified teachers (head teachers, acting head teachers, assistant head teachers, deputy heads and other qualified teachers).

Special educational needs: A child has special needs if he or she has learning difficulties which requires special educational provision to be made for him or her. A learning difficulty means that the child has

significantly greater difficulty in learning than most children of the same age or that the child has a disability that needs different educational facilities from those that the school generally provides for children. Pupils with special educational needs may have Statements issued by the LA or may have their needs identified by the school. In the latter case they come under one of two further categories: School Action or School Action Plus.

- i. Pupils with statements - Pupils for whom the Authority maintains a statement of special educational needs under Part iv of the Education Act 1996. A statement may be issued by the LA after assessment of a child's needs.
- ii. School Action - When a class or subject teacher identify that a pupil has special educational needs they provide interventions that are additional to or different from those provided as part of the school's usual curriculum.
- iii. School Action Plus - When the class or subject teacher and the Special Educational Needs Co-ordinator are provided with advice or support from outside specialists, so that alternative interventions additional or different to those provided for the pupil through 'School Action' can be put in place. The Special Educational Needs Co-ordinator usually takes the lead although day-to-day provision continues to be the responsibility of class or subject teacher.

Ethnic background: please see these [guidance notes](#) for further information on categories and data collection methods.

Welsh medium schools: for further information please see these [guidance notes](#)

LA maintained schools: Schools maintained by the local authorities. The authorities meet their expenditure partly from council tax and partly from general grants made by the Welsh Government.

Independent schools: Schools which charge fees and may also be financed by individuals, companies or charitable institutions. All independent schools in Wales have to register with the Welsh Government.

Rounding: In tables where figures have been rounded to the nearest final digit there may be an apparent discrepancy between the sum of the constituent items and the total as shown.

Symbols: The following symbols have been used throughout the publication:

- .. not available
- . not applicable
- the data item is not exactly zero but less than 0.05
- * figure is less than 5, or is based on a figure less than 5.

Comparability: Other countries' releases

Here is the latest available data for:

England

[Schools-pupils-and-their-characteristics-January-2016](#)

[Education-and-training-statistics-for-the-UK-2015](#)

Scotland

[Education statistics](#)

Northern Ireland

[Education statistics](#)

Related data for Wales

This release shows final data at Wales level for 2012 - 2016.

The previous census data published were for 2015, in the form of a Statistical First Release: [Schools Census Results, 2015](#), published on 23 July 2015.

Claimant Count: data on the latest claimant count can be obtained by following this link: [Claimant count in Wales by age, year, measure and duration \(not seasonally adjusted\)](#)

Who are the key users of this data?


These statistics are used both within and outside the Welsh Government. Some of the key users are:

- Ministers and the Members Research Service in the National Assembly for Wales;
- The Department for Education and Skills in the Welsh Government;
- Other areas of the Welsh Government;
- The research community;
- Students, academics and universities;
- Individual citizens and private companies.

What are the data used for?

These statistics are used in a variety of ways. Some examples of these are:

- resource allocation in the Welsh Local Government Finance Settlement and the Pupil Deprivation Grant;
- advice to Ministers;
- the all-Wales education core data packs (the replacement for the National Pupil Database);
- local authority and school comparisons and benchmarks;
- to inform the education policy decision-making process in Wales including school reorganisation;
- to inform ESTYN during school inspections;
- the education domain of the Welsh Index of Multiple Deprivation;
- as a basis for Secondary School Categorisation;
- published on My Local School;
- to assist in research in educational attainment.

Further data underlying the tables in this release are available through 

Comments on the coverage or presentation of this release are welcomed. Contact details are on the front page.



All content is available under the Open Government Licence v3.0 , except where otherwise stated. <http://www.nationalarchives.gov.uk/doc/open-government-licence/version/3/>

National Statistics status

The United Kingdom Statistics Authority has designated these statistics as National Statistics, in accordance with the Statistics and Registration Service Act 2007 and signifying compliance with the Code of Practice for Official Statistics.

National Statistics status means that official statistics meet the highest standards of trustworthiness, quality and public value.

All official statistics should comply with all aspects of the Code of Practice for Official Statistics. They are awarded National Statistics status following an assessment by the UK Statistics Authority's regulatory arm. The Authority considers whether the statistics meet the highest standards of Code compliance, including the value they add to public decisions and debate.

It is Welsh Government's responsibility to maintain compliance with the standards expected of National Statistics. If we become concerned about whether these statistics are still meeting the appropriate standards, we will discuss any concerns with the Authority promptly. National Statistics status can be removed at any point when the highest standards are not maintained, and reinstated when standards are restored.