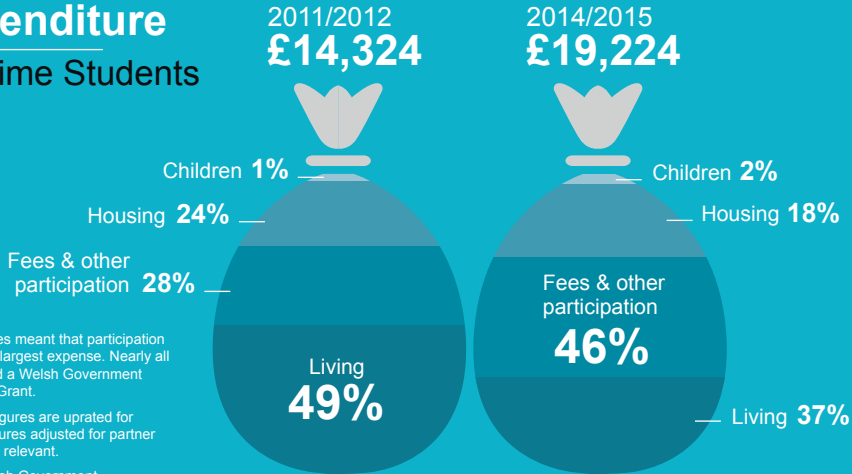


Student Income & Expenditure Survey 2014/2015

Expenditure

Full-time Students



Fee increases meant that participation became the largest expense. Nearly all students had a Welsh Government Tuition Fee Grant.

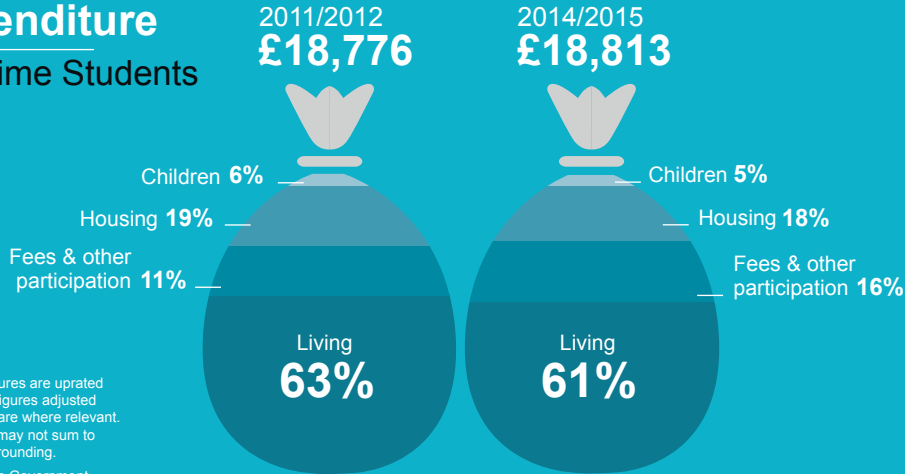
2011/2012 figures are uprated for inflation. Figures adjusted for partner share where relevant.

Source: Welsh Government

Student Income & Expenditure Survey 2014/2015

Expenditure

Part-time Students



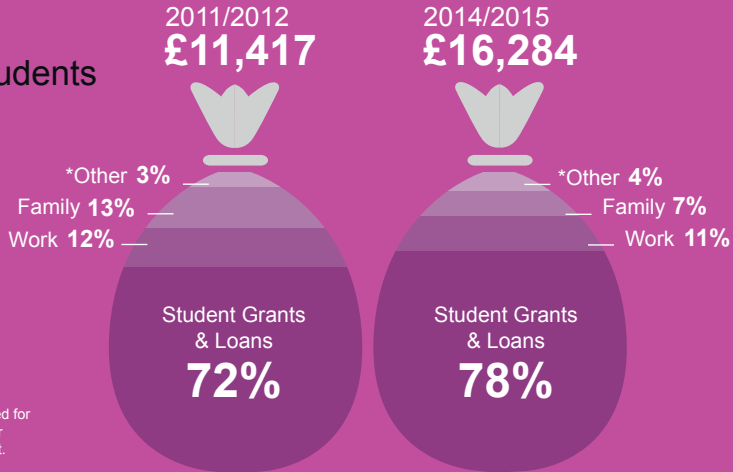
2011/2012 figures are updated for inflation. Figures adjusted for partner share where relevant. Percentages may not sum to 100% due to rounding.

Source: Welsh Government

Student Income & Expenditure Survey 2014/2015

Income

Full-time Students



*Other income includes social security benefits

2011/2012 figures are uprated for inflation. Figures adjusted for partner share where relevant.

Source: Welsh Government



Student Income & Expenditure Survey 2014/2015

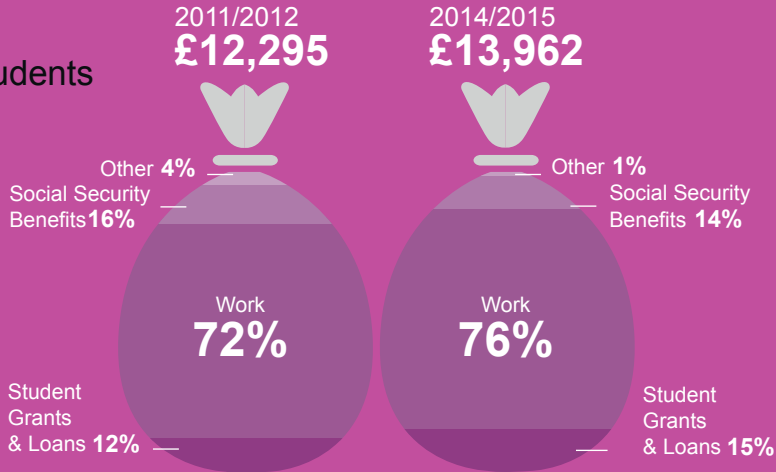
Income

Part-time Students

Percentages sum to over 100, as most part-timers had a spouse/partner whose income they subsidised.

2011/2012 figures are uprated for inflation. Figures adjusted for partner share where relevant.

Source: Welsh Government



Student Income and Expenditure Survey 2014/15

Influence of fee costs on Higher Education choices

19%

of full-time
students

&

33%

of part-time
students

said their higher education decisions had been influenced by **fee costs**

Source: Welsh Government



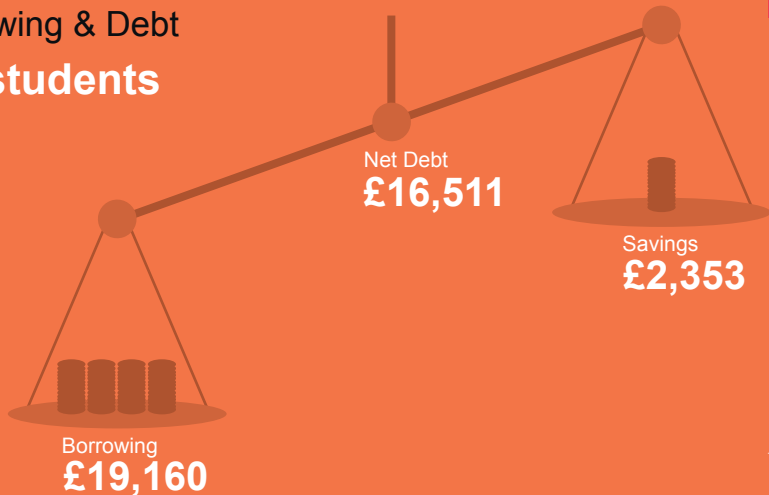
Llywodraeth Cymru
Welsh Government

Student Income & Expenditure Survey 2014/2015

Savings, Borrowing & Debt

Third year students

Full-time



Sums do not balance as averages for each component were calculated separately.

Some students will not yet have reached their final year.

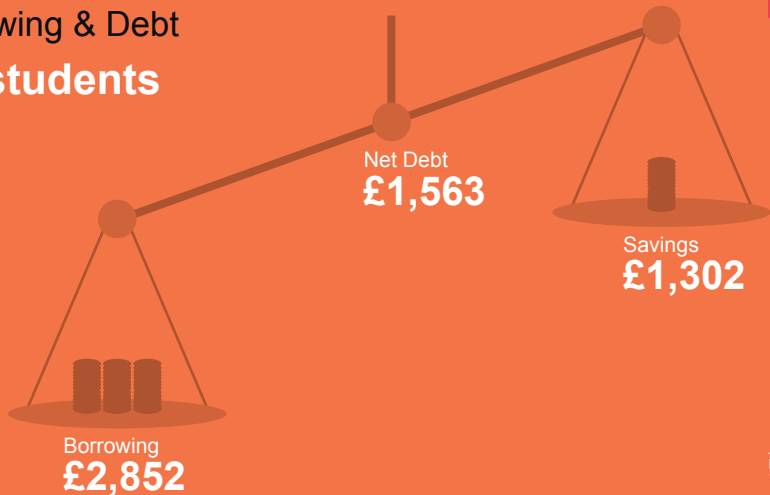
Source: Welsh Government

Student Income & Expenditure Survey 2014/2015

Savings, Borrowing & Debt

Third year students

Part-time



Sums do not balance as averages for each component were calculated separately.

Some students will not yet have reached their final year.

Source: Welsh Government