



WALES TB DASHBOARD

QUARTER 2 2023

Llywodraeth Cymru
Welsh Government

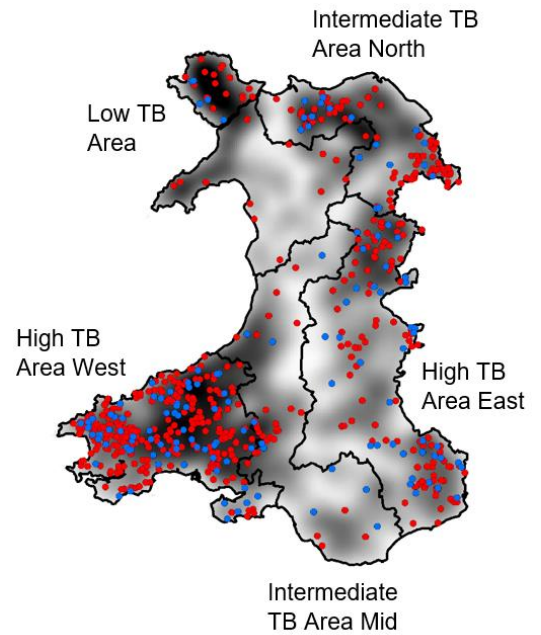
Figure 1: New and Open Incidents as at the end of the quarter

● Q2 2023 New Incident ● Q2 2023 Open Incident

Low ← Cattle Herd → High

Lowest TB levels in **Northwest Wales**, highest in **Southwest**.

Most TB breakdowns in Wales are in the high TB areas in the East and West.



CLICK ON REGIONS BELOW to explore in more detail

	Live Herds*	New Incidents	Incidents closed	Open Incidents**	Reactors Disclosed	Q1 2010 to Q2 2023
Wales	11,515	140	142	617 (-2)	2,270	
High TB (West)	3,078	70	43	312 (+27)	1,365	
High TB (East)	2,746	38	45	140 (-7)	513	
Intermediate TB (Mid)	2,005	9	18	36 (-9)	74	
Intermediate TB (North)	1,563	18	32	95 (-14)	264	
Low TB	2,123	5	4	34 (+1)	54	

Sparklines show open cases, adjusted by herd numbers, on a quarterly basis since 2010. Red bar indicates highest level, green bar lowest.

* Live herds at end of previous year (2021). **Change in the number of open incidents since last quarter in brackets.

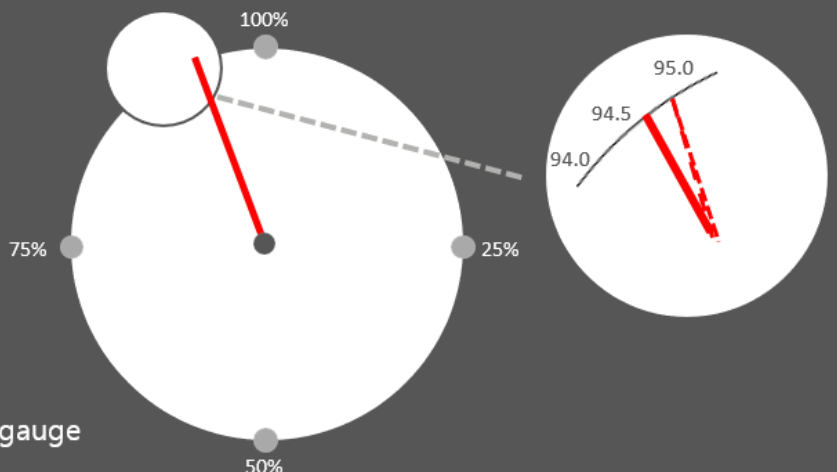
Officially TB free Gauge Q1 2023

94.6%

of herds were TB free in Q2 2023.

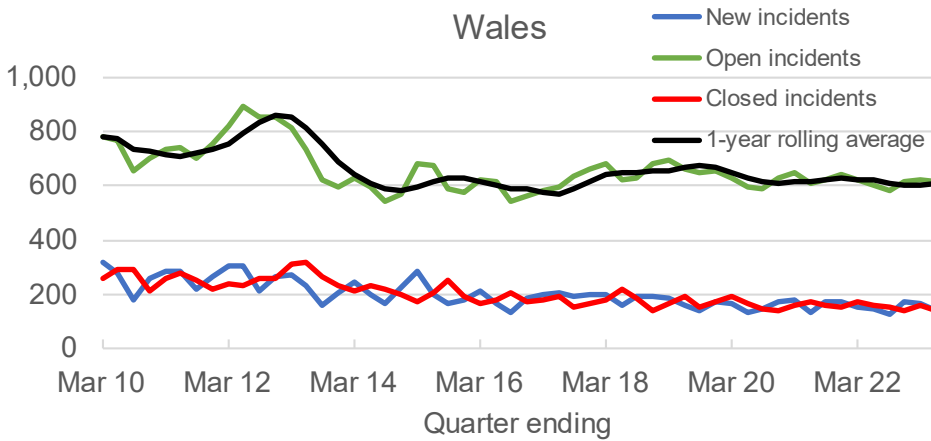
This is lower than the previous year (94.8%) and Q2 2021 (94.8%).

- QTR 2 2023
- QTR 2 2022
- QTR 2 2021

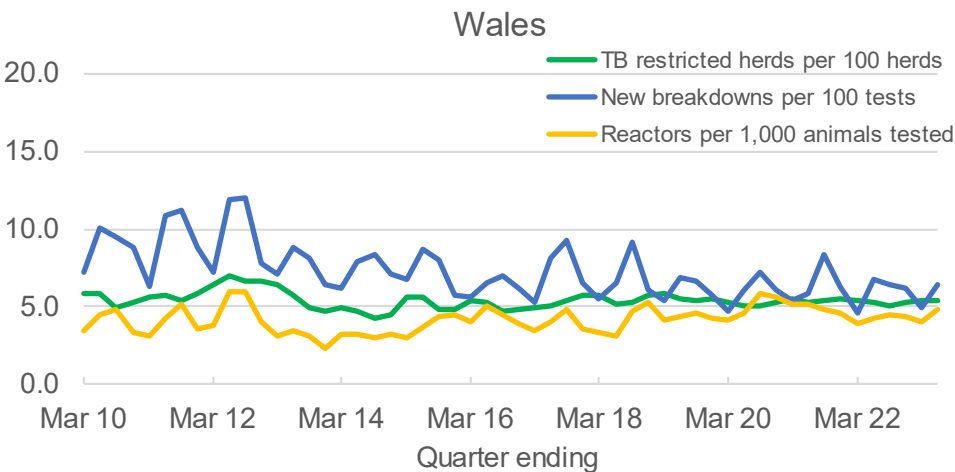


[CLICK HERE](#) for Beef and Dairy versions of this gauge

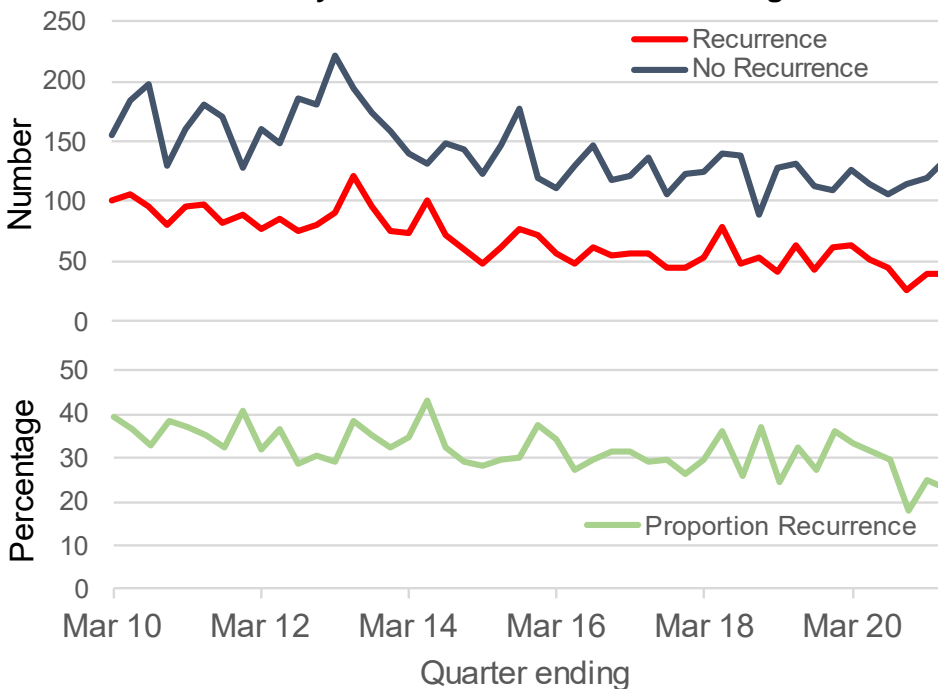
New, closed, and open incidents



Incidence, prevalence, and animal-level risk



Recurrence – how many closed incidents break down again?



The number of open incidents generally decreased from Q2 2012 to Q3 2014. Since then, the number of open incidents has generally fluctuated between 545 and 697 per quarter. Open cases for Q2 2023 decreased by 0.3% compared to the previous quarter from 619 to 617.

Since Q1 2016, new incidents per quarter have fluctuated between 128 and 215.

Incidence (new breakdowns per 100 OTF tests) was 5.0 for Q2 2023 compared to 6.8 for Q2 2022.

Overall fall in incidence (blue line) since 2012, despite fluctuations. There are fluctuations between quarters which reflect the seasonality of the trend largely due to increased testing in the winter months. Incidence in Q1 2022 was the lowest recorded in the time series at 4.6.

Herd prevalence (herds restricted at the end of quarter per 100 live herds) for Wales for Q2 2023 was 5.4%. This is higher than Q2 2022 and Q2 2018 at 5.2%.

Top chart shows incidents closed from Q1 2010 to Q1 2020. Blue line shows incidents that have remained clear over subsequent two years. Red line represents the number of breakdowns occurring after a closed incident within two years. The bottom chart expresses the recurrence as a percentage.

22.9% of incidents closed in Q2 2021 entailed a recurrence in the subsequent two years. This is the second lowest level since the beginning of the time series. The annual two-year recurrence rate of incidents closed for 2020 was 28.6% and 30.2% for 2019.

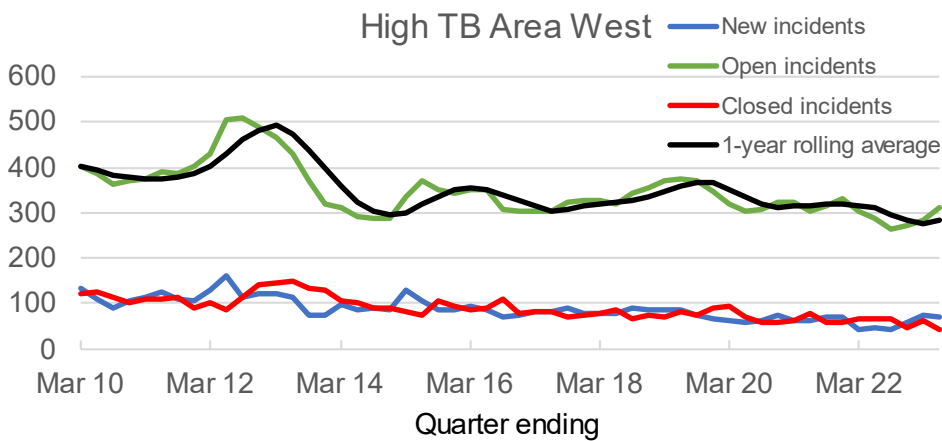
HIGH TB AREA – WEST

◀ BACK

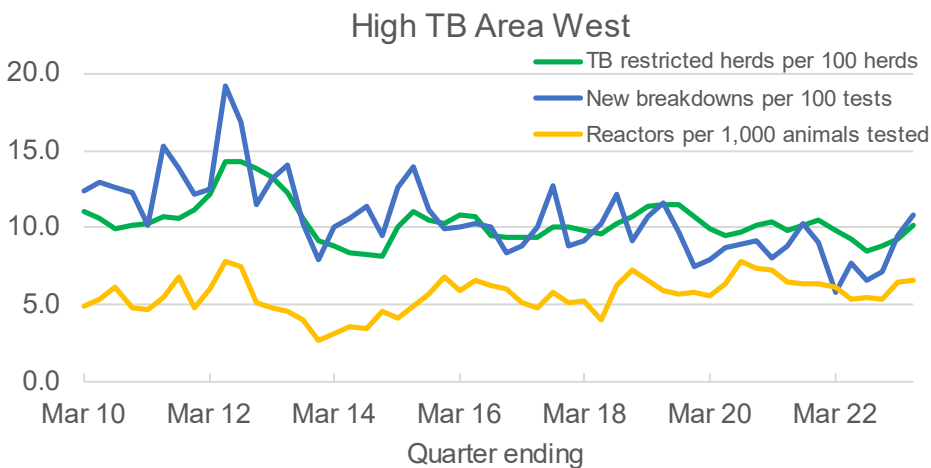
Q2 2023 summary

	Live Herds	New Incidents	Incidents Closed	Open Incidents	Reactors Disclosed	Q1 2010 to Q2 2023
High TB (West)	3,078	70	43	312 (+27)	1,365	

New, closed, and open incidents



Incidence, prevalence, and animal-level risk



Open incidents for Q2 2023 increased by 9.5% compared to the previous quarter from 285 to 312.

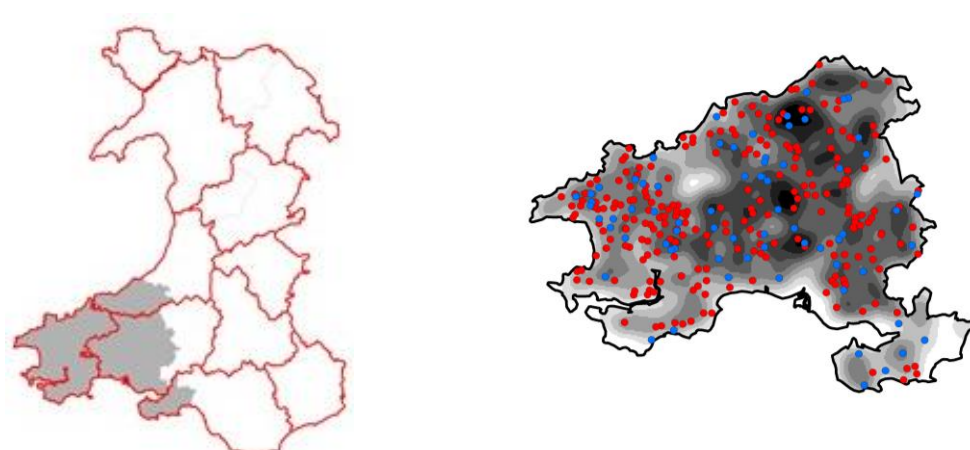
Open incidents in this data have decreased since Q3 2012 at 507. From Q1 2015, the number of open incidents has fluctuated between 373 and 263 per quarter.

Since Q1 2015, the number of new incidents per quarter has fluctuated between 129 and 41.

Incidence (new breakdowns per 100 OTF tests) was 10.9 for Q2 2023. This compares to 7.6 for Q2 2022.

There was a large decrease in incidence for Q1 2022 to the lowest ever recorded in any quarter since the data series began at 5.8.


Herd prevalence (herds restricted at the end of quarter per 100 live herds) for Q2 2023 was 10.1%. This compares to 9.2% for Q2 2022 and 9.6% for Q2 2018. After a period of decline from the series peak of 14.3% for Q3 2012, prevalence has fluctuated between 11.5% and 8.5% since Q1 2015.



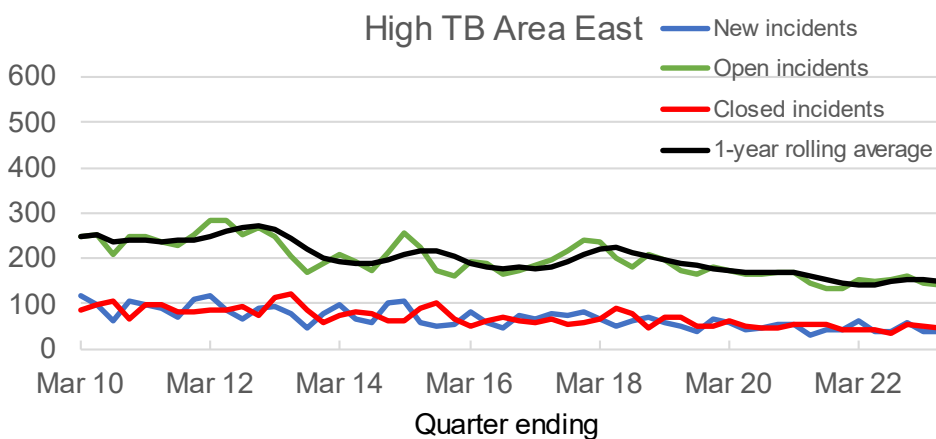
HIGH TB AREA – EAST

◀ BACK

Q2 2023 summary

	Live Herds	New Incidents	Incidents Closed	Open Incidents	Reactors Disclosed	Q1 2010 to Q2 2023
High TB (East)	2,746	38	45	140 (-7)	513	

New, closed, and open incidents

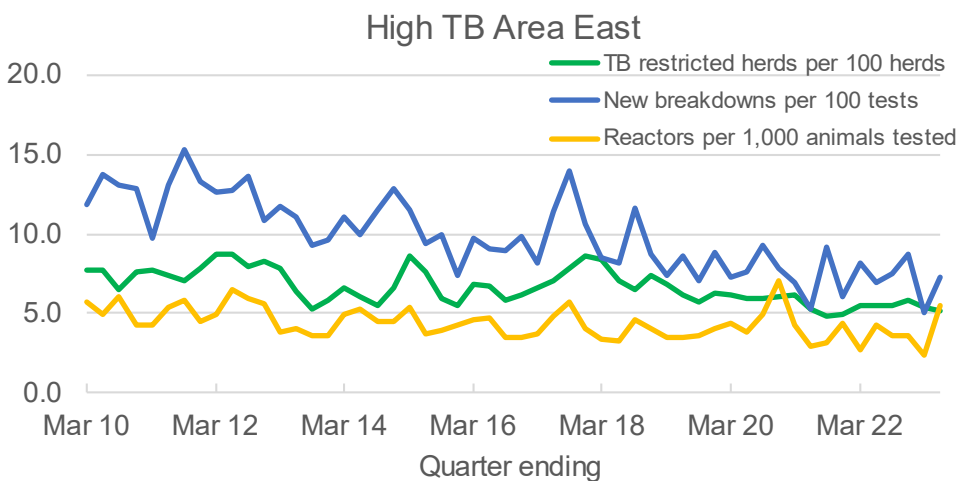


Open incidents for this series peaked at 282 for both Q1 2012 and Q2 2012. Since then, open incidents have fluctuated with a clearer downward trend starting from 2017. The number of open incidents has decreased to 140 in Q2 2023 from 147 in Q1 2023.

Since Q1 2015, the number of new incidents per quarter has fluctuated between 107 and 31.

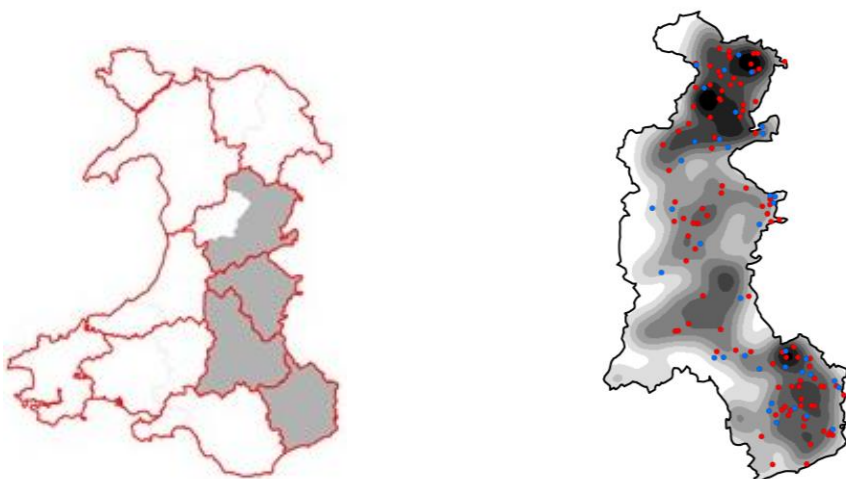
Incidence (new breakdowns per 100 OTF tests) is 7.3 for Q2 2023. This compares to 6.9 for Q2 2022 and 8.2 for Q2 2018.

Incidence, prevalence, and animal-level risk



There has been a general downward trend in herd prevalence (herds restricted at the end of quarter per 100 live herds) since Q4 2017.


Prevalence for Q2 2023 was 5.1%. This is a decrease compared to 5.5% in Q2 2022 and to 7.0% in Q2 2018. Prevalence for Q3 2021 was the lowest in the data series at 4.9%.



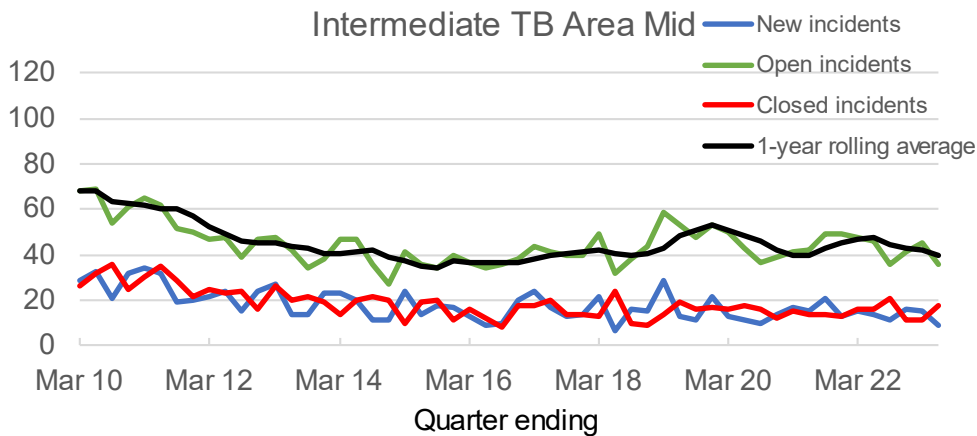
INTERMEDIATE TB AREA – MID

◀ BACK

Q2 2023 summary

	Live Herds	New Incidents	Incidents Closed	Open Incidents	Reactors Disclosed	Q1 2010 to Q2 2023
Intermediate TB (Mid)	2,005	9	18	36 (-9)	74	

New, closed, and open incidents

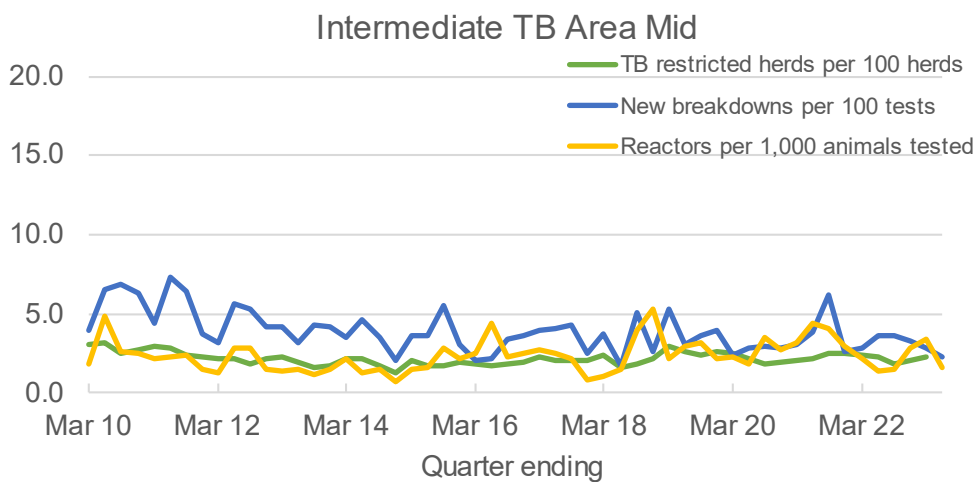


Since Q3 2020, after a period of decline from Q1 2019, the number of open incidents generally increased each quarter until Q1 2022. In Q2 2023, open incidents decreased to 36 from 45 in Q1 2023.

Since Q1 2015, the number of new incidents per quarter has fluctuated between 29 and 7.

Incidence (new breakdowns per 100 OTF tests) was 2.3 in Q1 2023, falling from 3.7 in Q2 2022.

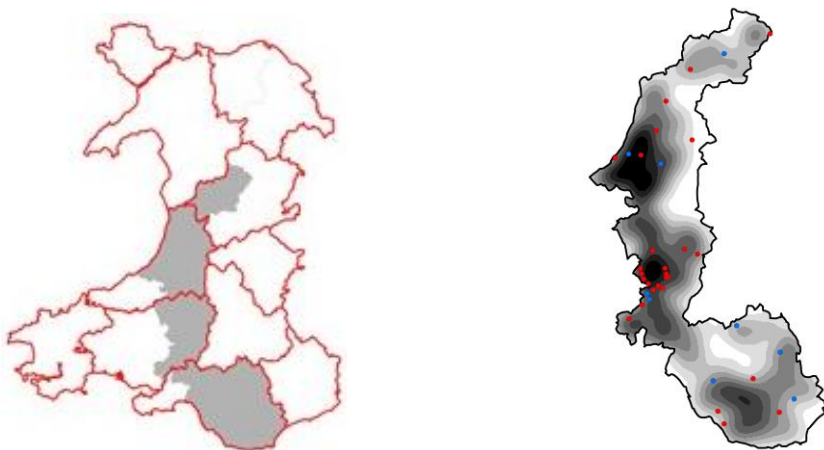
Incidence, prevalence, and animal-level risk



Incidence increased in Q3 2021 compared to previous quarters to the highest quarterly value since Q3 2011, however, given the relatively low incidence since then this does not appear to be an emerging trend.

Herd prevalence (herds restricted at the end of quarter per 100 live herds) was 1.8% for Q2 2023. This is a decrease compared to 2.3% for Q2 2022 but an increase compared to 1.6% for Q2 2018.

Herd prevalence has remained relatively stable since Q1 2010 fluctuating between 3.1% and 1.3%.



INTERMEDIATE TB AREA – NORTH

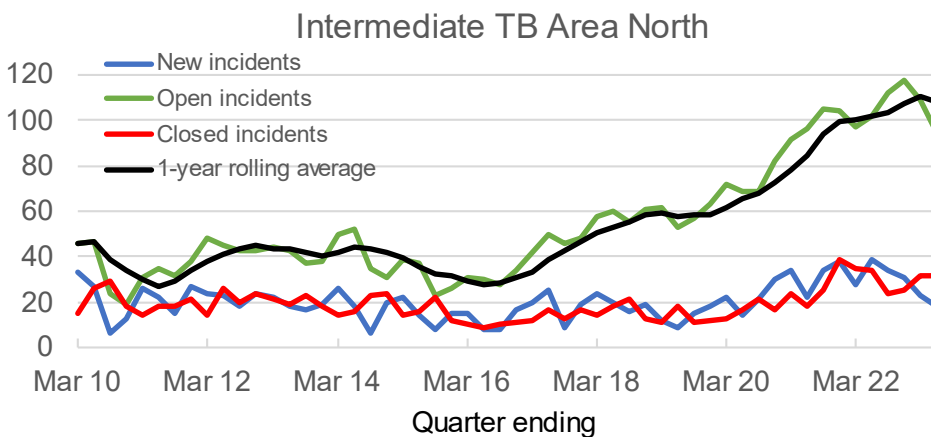
◀ BACK

Q2 2023 summary

	Live Herds	New Incidents	Incidents Closed	Open Incidents	Reactors Disclosed	Q1 2010 to Q2 2023
Intermediate TB (North)	1,563	18	32	95 (-14)	264	

On 1 November 2021, there was a temporary reclassification of the three Denbighshire/Conwy Valley spatial units CL1, CL2 and GW1, as part of the Intermediate TB Area North (ITBAN) from the Low TB Area. This change is now reflected in the data within this dashboard. Further information has been provided on the Bovine TB dashboard pages.

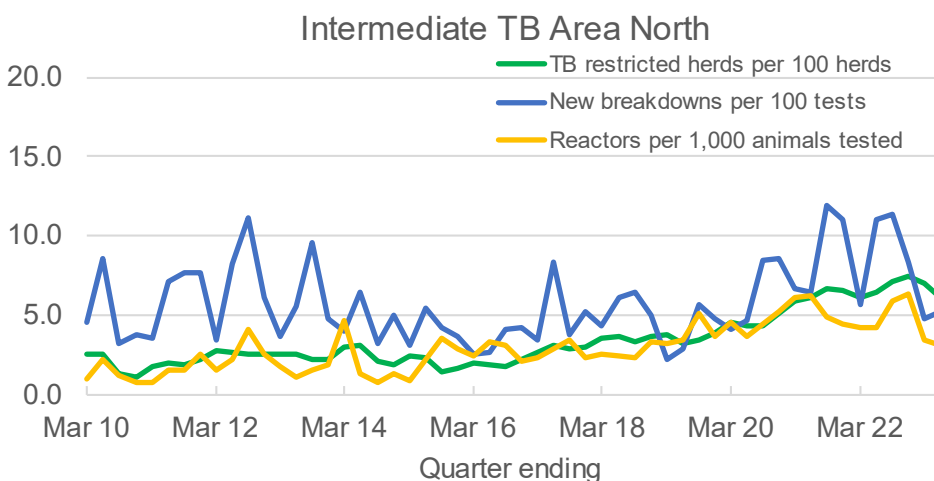
New, closed, and open incidents



Since Q3 2015, the number of open incidents has generally increased. There was a large increase in open incidents during 2017 and again during 2020 continuing into 2021 and 2022.

Open incidents decreased to 95 for Q2 2023 from 109 for Q1 2023. Q4 2022 saw the highest number of open incidents in the series at 118.

Incidence, prevalence, and animal-level risk

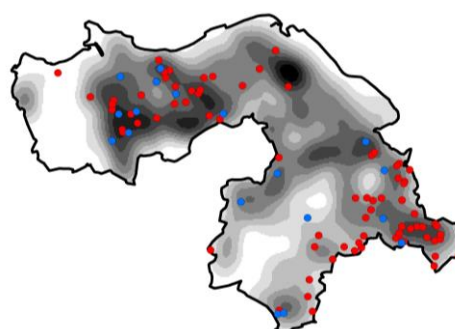


Open incidents decreased to 95 for Q2 2023 from 109 for Q1 2023. Q4 2022 saw the highest number of open incidents in the series at 118.

Herd incidence (new breakdowns per 100 OTF tests) was 5.2 for Q2 2023. This is a decrease compared to 11.1 for Q2 2022 and 6.1 for Q2 2018. However, some additional blood testing ceased this quarter which may have contributed to a decrease in incidence.

There was a sharp increase in incidence since Q1 2020. These increases are driven by a cluster of breakdowns in rural Wrexham and a cluster of breakdowns in the Denbighshire and Conwy Valley area. Further information is presented in the [Low TB Area FAQ](#).


Herd prevalence was 6.1% for Q2 2023. This is a decrease compared to 6.5% in Q2 2022 but an increase compared to 3.6% for Q2 2018. Prevalence was highest in the series at 7.5% for Q4 2022 and is currently higher than the High TB Area East at 5.1%.



LOW TB AREA

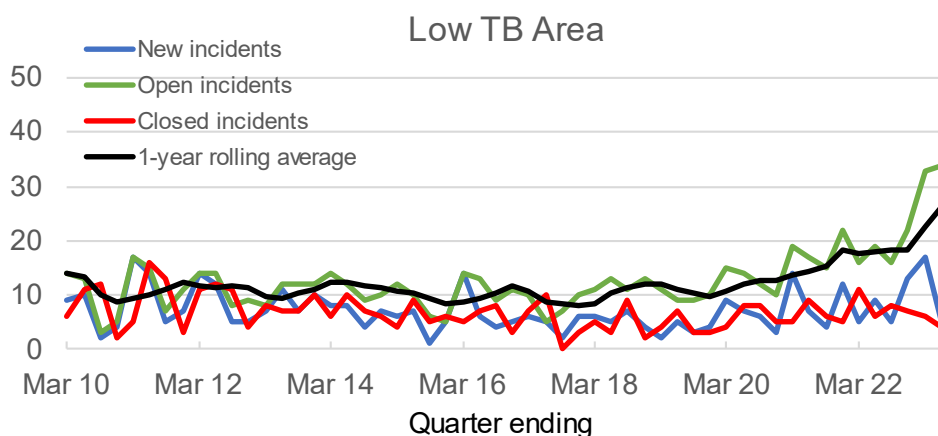
◀ BACK

Q2 2023 summary

	Live Herds	New Incidents	Incidents Closed	Open Incidents	Reactors Disclosed	Q1 2010 to Q2 2023
Low TB Area	2,123	5	4	34 (+1)	54	

On 1 November 2021, there was a temporary reclassification of the three Denbighshire/Conwy Valley spatial units CL1, CL2 and GW1, as part of the Intermediate TB Area North (ITBAN) from the Low TB Area. This change is now reflected in the data within this dashboard. Further information has been provided on the Bovine TB dashboard pages.

New, closed, and open incidents

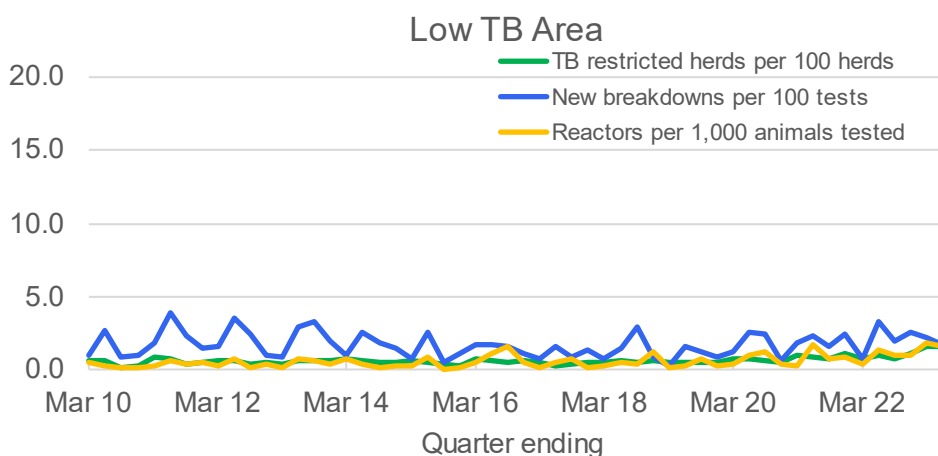


Open incidents have generally increased from Q3 2019 at 9 open incidents to the highest number in the series at 34 for Q2 2023. Open incidents increased to 34 in Q2 2023 from 33 in Q1 2023.

There were 5 new incidents during Q2 2023. Since Q1 2010, new incidents per quarter have fluctuated between 17 and 1.

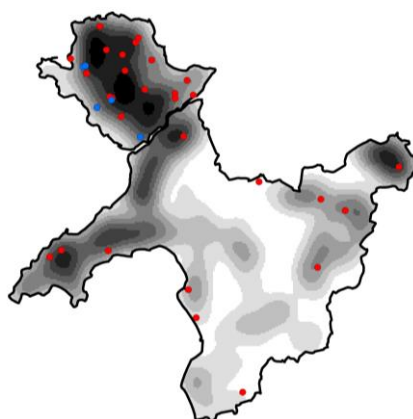
Prevalence was 1.6% for Q1 2023. This is the highest in the series and compares to 0.9% for Q2 2022 and 0.6% for Q2 2018.

Incidence, prevalence, and animal-level risk

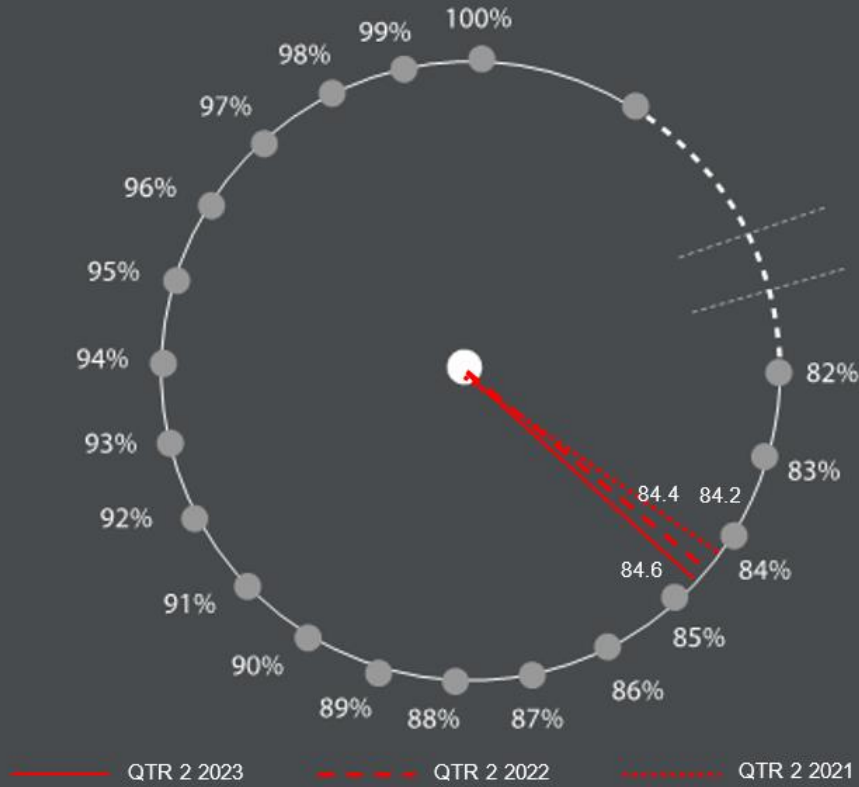


Incidence, prevalence, and animal risk is consistently the lowest in Wales, however, three spatial units (CL1, CL2 and GW1) have been reclassified to the Intermediate TB Area North.

The Welsh epidemiological team at APHA have identified a deteriorating situation on the Isle of Anglesey with a recent rise in TB breakdowns. Surveillance data shows that at the end of Q2 2023, there were 22 open breakdowns in Anglesey. This compares to 6 at the end of Q2 2022 and 2 for Q2 2018.



Dairy Gauge 2,123 herds



Beef Gauge 8,930 herds

