

Fostering Strategic Collaboration for Development

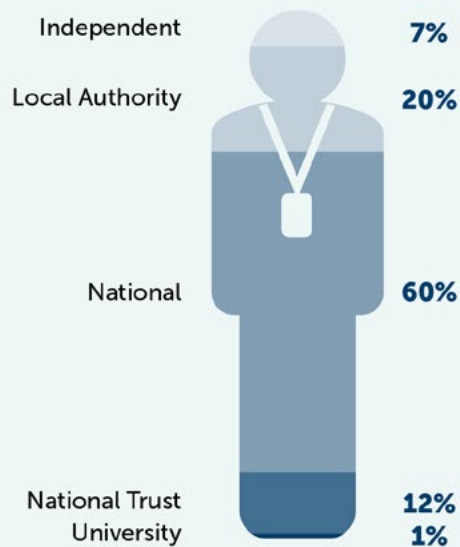
Museums in Wales are operated by a skilled workforce of staff and volunteers. They perform a wide range of roles and demonstrate highly specialist skills which are rarely found outside of the cultural heritage sector. These specialised job roles include curatorial and conservation staff.

In 2024:

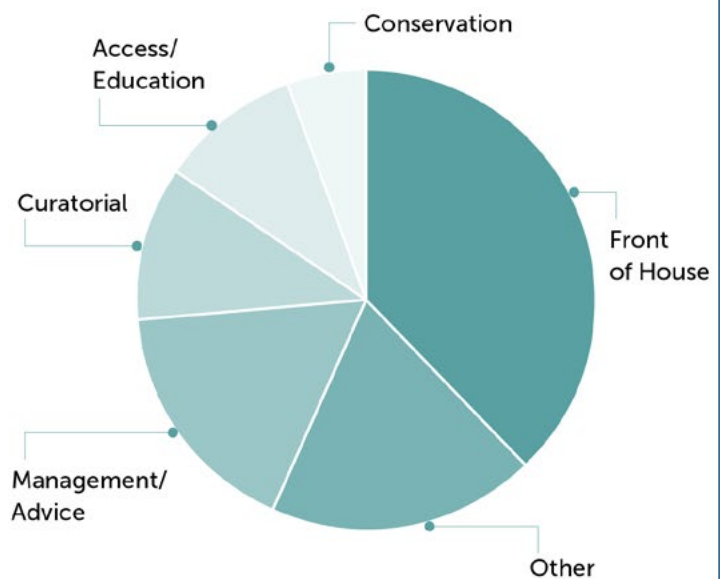
- Welsh museums employ 1,623 staff (999 full-time equivalent) and 3,000 volunteers.
- Two-thirds of museums support the performance of their staff and volunteers by providing a full induction, training needs assessment, and plan for all staff.
- Volunteers make up 62.5 per cent of the museum workforce. They form over 80 per cent of the workforce in university, independent and National Trust museums.
- Access to training for almost half of museums is dependent on access to free or externally funded training as they have no dedicated training budget.

Full-Time Equivalent (FTE) staff in Welsh museums

FTE staff by governance type



FTE professional staff by role

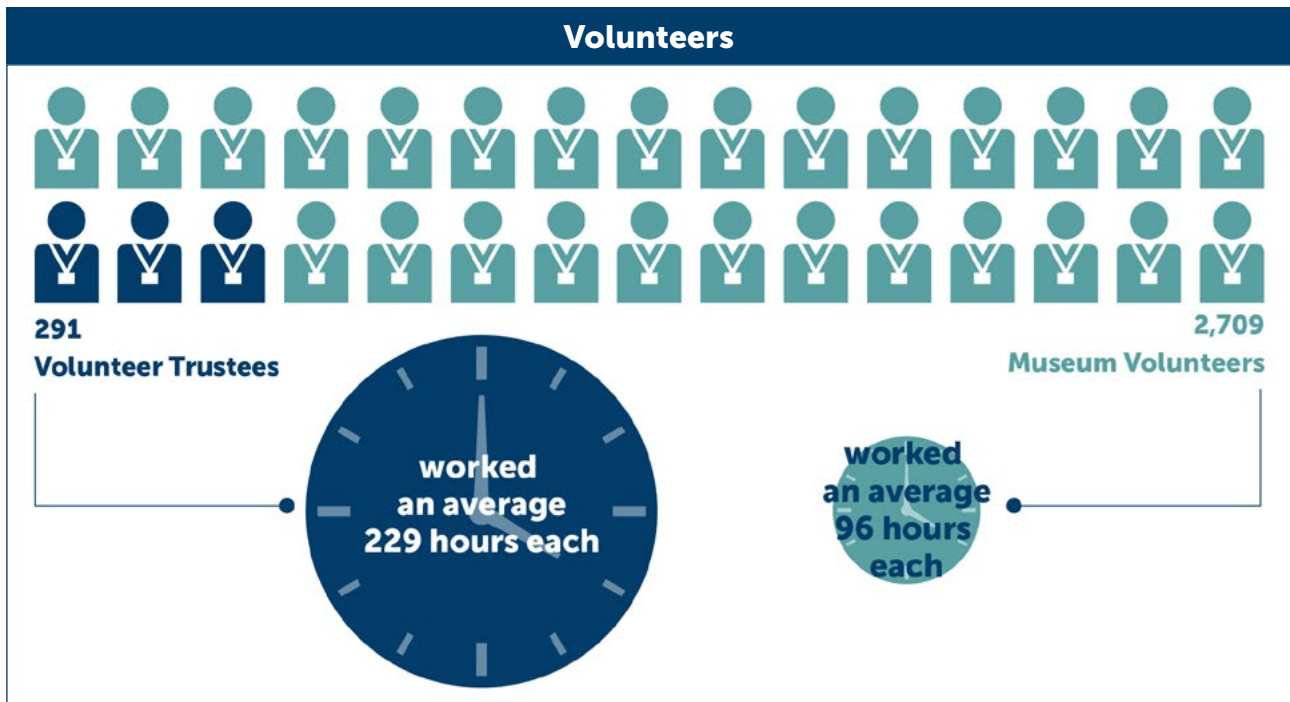


Full Research Report:
Chaplin E, Henderson J, Parkes P, Roberts E (2026).

Museum Spotlight Survey 2024.
Cardiff: Welsh Government, GSR report number 21/2026.

Available at:
<https://www.gov.wales/museum-spotlight-survey-2024>

SPOTLIGHT



Sectoral support from Amgueddfa Cymru – Museum Wales (AC-MW)



Respondents' Words

We do not have the capacity to meet the demands on our services and it means that people are volunteering longer hours, and paid staff are putting in additional volunteer hours.

Full Research Report:
Chaplin E, Henderson J, Parkes P, Roberts E (2026).

Museum Spotlight Survey 2024.
Cardiff: Welsh Government, GSR report number 21/2026.

Available at:
<https://www.gov.wales/museum-spotlight-survey-2024>